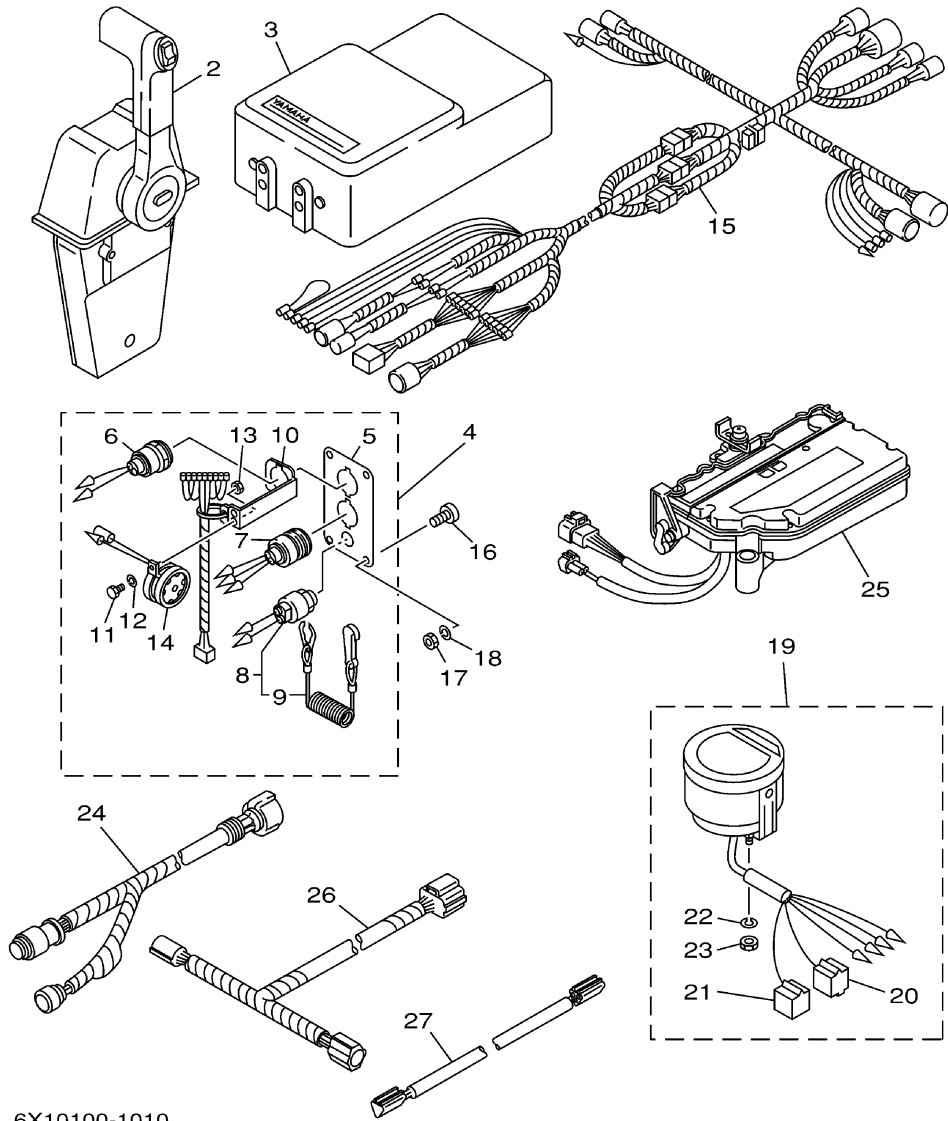


1
**DUAL STATION
KIT (SINGLE)**
(Fig. 1, Ref. No. 2 to 27)



6X10100-1010


Part List

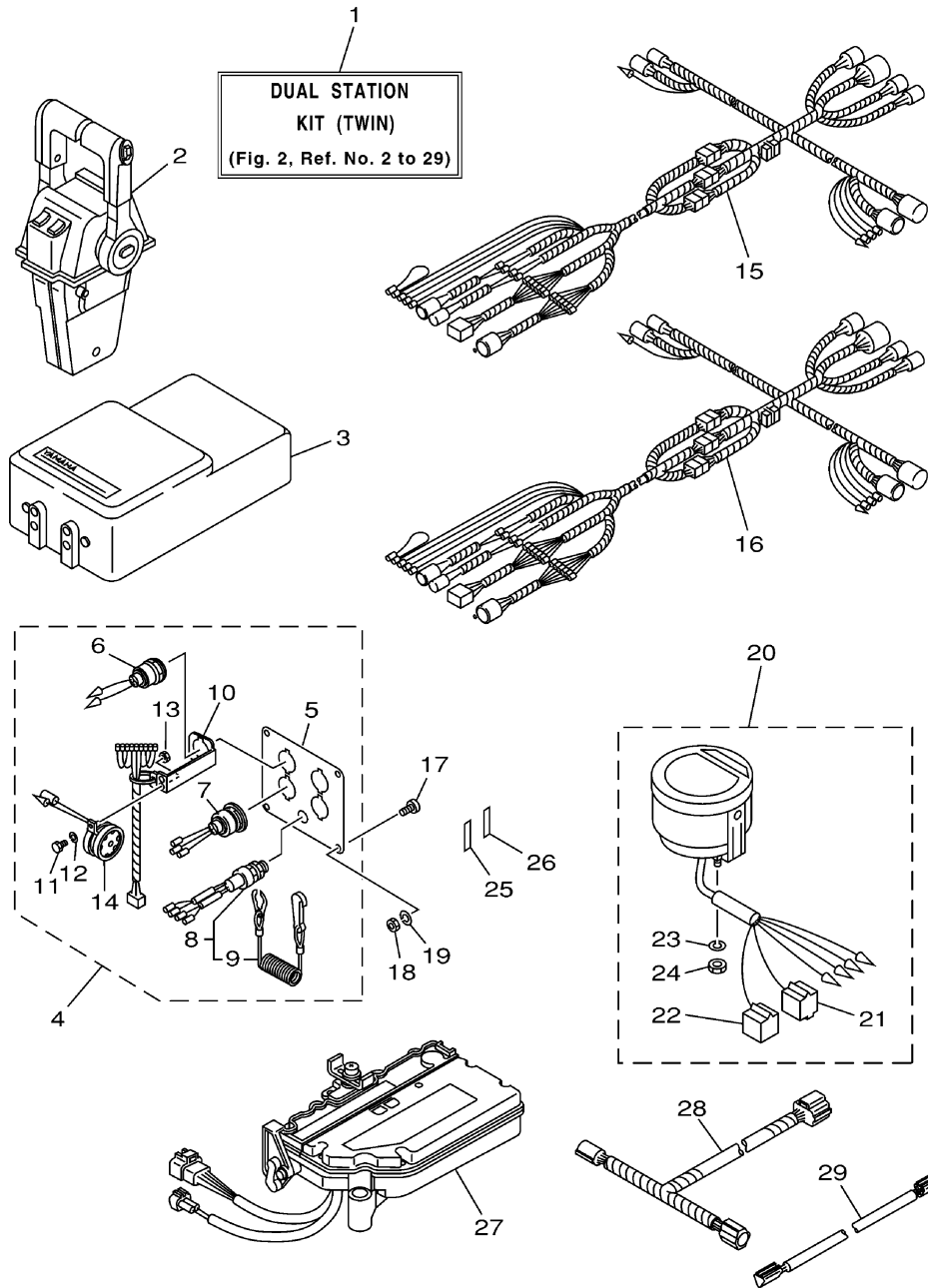
DUAL_STATION_2002 2002 / DUAL STATION KIT (SINGLE)

REF - NO	PART NUMBER	PART NAME	QUANTITY	REMARKS
1	6X1-W0006-06-00	DUAL STATION KIT(SINGLE)	1	(6X10)
2	704-48205-14-00	REMOTE CONTROL ASSY	1	SEE FIG.5 WITH PT/T SW.(6X10)
3	6X1-48208-02-00	JUNCTION BOX(DUAL STATION)	1	SEE FIG.4(6X10)
4	6X1-82570-00-00	PANEL SWITCH ASSY	1	(6X10)
5	6X1-82571-00-00	.PANEL, SWITCH	1	(6X10)
6	6X1-81870-00-00	.STARTING SWITCH ASSY	1	(6X10)
7	6X1-82550-00-00	.ENGINE STOP SWITCH ASSY	1	(6X10)
8	688-82575-01-00	.ENGINE STOP SWITCH ASSY	1	(6X10)
9	682-82556-00-00	..LANYARD, STOP SWITCH	1	(6X10)
10	6X1-82581-00-00	.STAY, CORD CLAMP	1	(6X10)
11	97303-05012-00	.BOLT	1	(6X10)
12	92903-05100-00	.WASHER, SPRING	1	(6X10)
13	95303-05700-00	.NUT	1	(6X10)
14	688-83383-11-00	.BUZZER	1	(6X10)
15	6X1-8258A-20-00	EXTENSION, WIRE HARNESS	1	(6X10)
16	90149-05M05-00	SCREW	4	(6X10)
17	95380-05600-00	NUT	4	(6X10)
18	92990-05100-00	WASHER, SPRING	4	(6X10)
19	6Y5-8350T-80-00	DIGITAL TACHOMETER ASSY	1	(6X10)
20	9E450-04433-00	.CONNECTOR	1	M-4-W(6X10)
21	9E450-04533-00	.CONNECTOR	1	F-4-W(6X10)
22	92990-04100-00	.WASHER, SPRING	2	(6X10)
23	95380-04600-00	.NUT	2	(6X10)
24	6K1-8258A-40-00	EXTENSION, WIRE HARNESS (8M)	1	(6X10)
25	6X1-48208-20-00	ACTUATER(DUAL STATION)	1	SEE FIG.3(6X10)
26	6X1-83553-00-00	WIRE, LEAD	1	(6X10)
27	6X1-82531-00-00	WIRE, LEAD	1	(6X10)

Part Notes

DUAL_STATION_2002 2002 / DUAL STATION KIT (SINGLE)

PART NUMBER	NOTE TEXT
682-82556-00-00 	OEM: This part number is among the Top 100 Most Popular Marine Maintenance Parts as of February 2013.



6X10100-1020


Part List

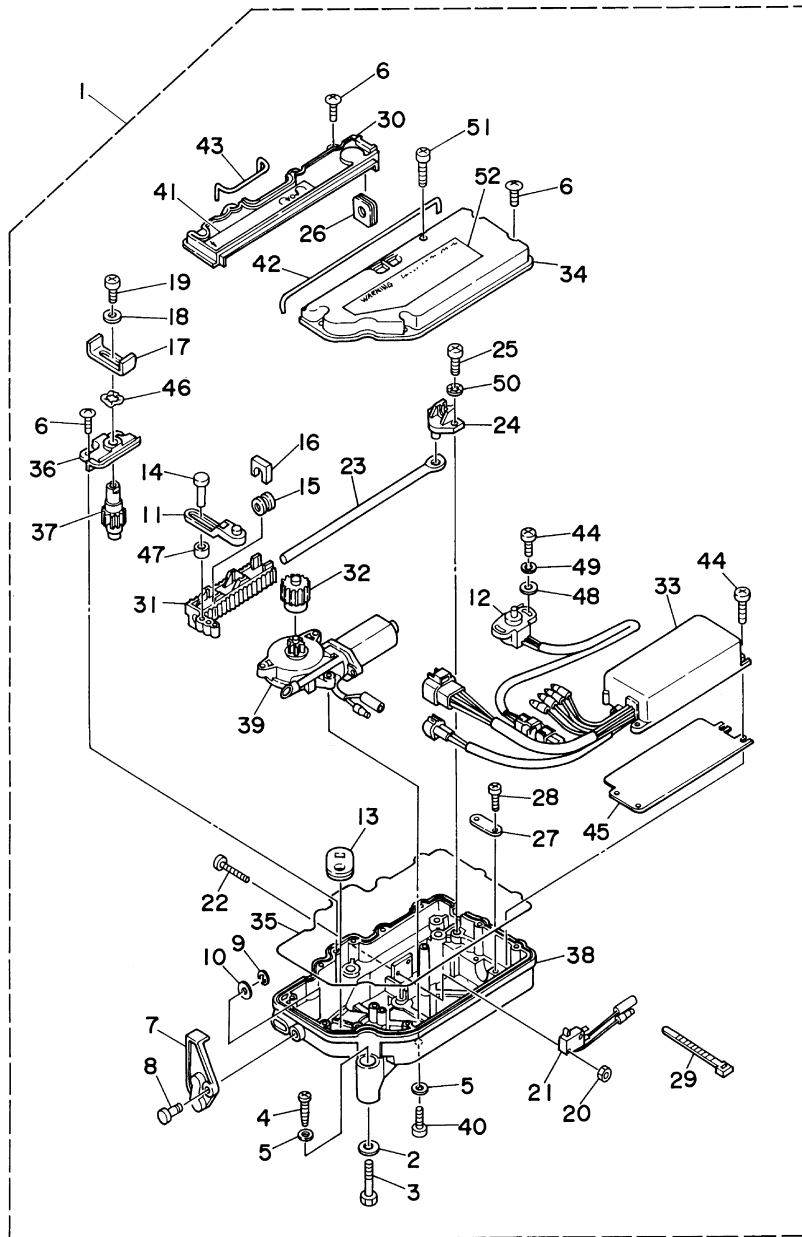
DUAL_STATION_2002 2002 / DUAL STATION KIT (TWIN)

REF - NO	PART NUMBER	PART NAME	QUANTITY	REMARKS
1	6X1-W0006-16-00	DUAL STATION KIT(TWIN)	1	(6X10)
2	704-48207-23-00	REMOTE CONTROL ASSY	1	SEE FIG.6 WITH PT/T SW.(6X10)
3	6X1-48208-02-00	JUNCTION BOX(DUAL STATION)	2	SEE FIG.4(6X10)
4	6X1-82570-10-00	PANEL SWITCH ASSY	1	(6X10)
5	6X1-82571-10-00	.PANEL, SWITCH	1	(6X10)
6	6X1-81870-00-00	.STARTING SWITCH ASSY	2	(6X10)
7	6X1-82550-00-00	.ENGINE STOP SWITCH ASSY	2	(6X10)
8	6K1-82575-00-00	.ENGINE STOP SWITCH ASSY	1	(6X10)
9	682-82556-00-00	..LANYARD, STOP SWITCH	1	(6X10)
10	6X1-82581-00-00	.STAY, CORD CLAMP	2	(6X10)
11	97303-05012-00	.BOLT	2	(6X10)
12	92903-05100-00	.WASHER, SPRING	2	(6X10)
13	95303-05700-00	.NUT	2	(6X10)
14	688-83383-11-00	.BUZZER	2	(6X10)
15	6X1-8258A-20-00	EXTENSION, WIRE HARNESS	1	(6X10)
16	6X1-8258A-30-00	EXTENSION, WIRE HARNESS	1	(6X10)
17	90149-05M05-00	SCREW	4	(6X10)
18	95380-05600-00	NUT	4	(6X10)
19	92990-05100-00	WASHER, SPRING	4	(6X10)
20	6Y5-8350T-80-00	DIGITAL TACHOMETER ASSY	2	(6X10)
21	9E450-04433-00	.CONNECTOR	1	M-4-W(6X10)
22	9E450-04533-00	.CONNECTOR	1	F-4-W(6X10)
23	92990-04100-00	.WASHER, SPRING	2	(6X10)
24	95380-04600-00	.NUT	2	(6X10)
25	6X1-83621-00-00	MARK 1	1	(6X10)
26	6X1-83622-00-00	MARK, 2	1	(6X10)
27	6X1-48208-20-00	ACTUATER(DUAL STATION)	2	SEE FIG.3(6X10)
28	6X1-83553-00-00	WIRE, LEAD	2	(6X10)
29	6X1-82531-00-00	WIRE, LEAD	2	(6X10)

Part Notes

DUAL_STATION_2002 2002 / DUAL STATION KIT (TWIN)

PART NUMBER	NOTE TEXT
682-82556-00-00 	OEM: This part number is among the Top 100 Most Popular Marine Maintenance Parts as of February 2013.

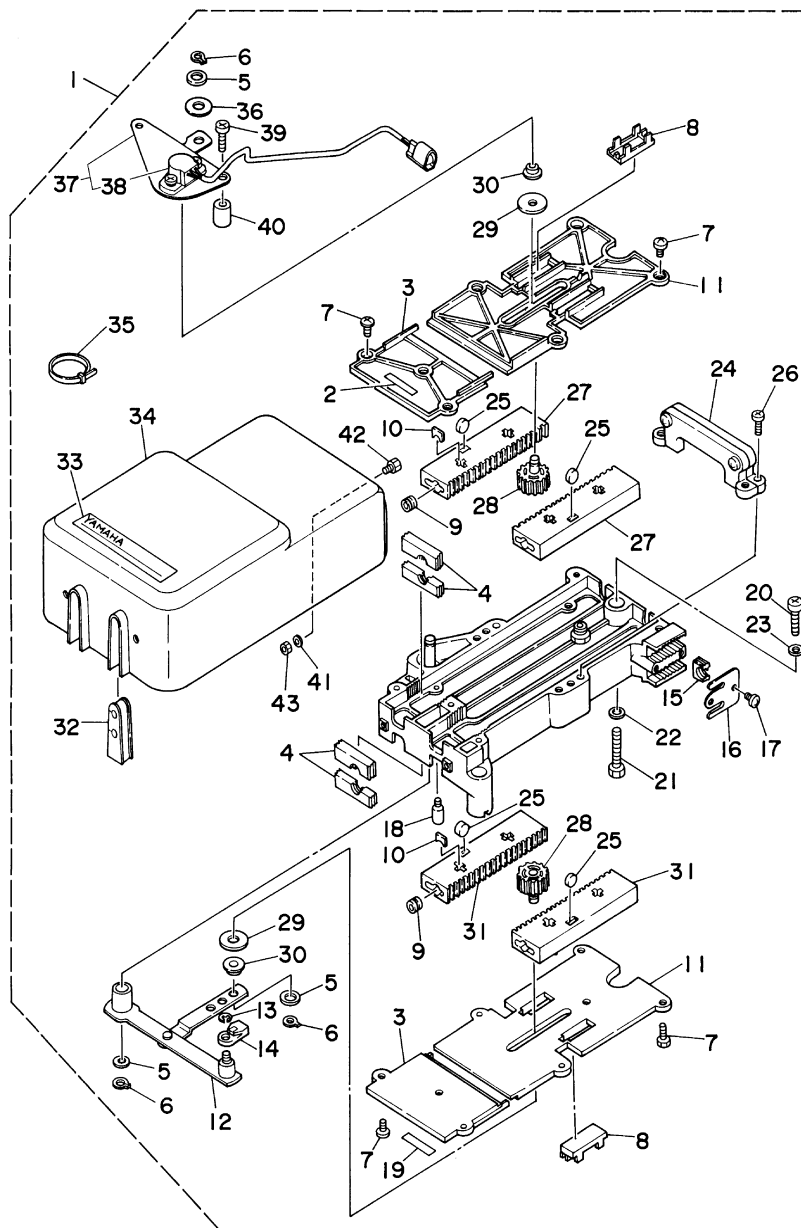


6X10110-2030

Part List

DUAL_STATION_2002 2002 / REMOTE CONTROL ASSY1(ACTUATER)

REF - NO	PART NUMBER	PART NAME	QUANTITY	REMARKS
1	6X1-48208-20-00	ACTUATER(DUAL STATION)	1	(6X10)
2	92990-08600-00	.WASHER, PLATE	3	(6X10)
3	6X1-48171-00-00	.BOLT(M8X125X40)	3	(6X10)
4	6X0-48128-00-00	.SCREW(M6X30)	3	(6X10)
5	702-48288-00-00	.WASHER, PLAIN	6	(6X10)
6	6X1-48127-00-00	.SCREW(M5X12)	10	(6X10)
7	6X1-48136-00-00	.LEVER, SHIFT	1	(6X10)
8	6X1-48173-00-00	.PIN	1	(6X10)
9	93430-06024-00	.CIRCLIP	1	(6X10)
10	701-48246-00-00	.SPACER	1	(6X10)
11	6X1-14573-00-00	.LEVER	1	(6X10)
12	6X2-85885-10-00	.THROTTLE SENSOR ASSY	1	(6X10)
13	6X1-48284-00-00	.GROMMET	1	(6X10)
14	6X1-48174-00-00	.PIN	1	(6X10)
15	6X1-48333-00-00	.CABLE END(10-32UNF)	1	(6X10)
16	6X1-48354-00-00	.SET-PLATE, CABLE	1	(6X10)
17	6X1-48148-00-00	.LEVER, SHIFT 2	1	(6X10)
18	704-48287-00-00	.WASHER	1	(6X10)
19	6X1-48281-00-00	.SCREW(M5X08X12)	1	(6X10)
20	95380-03600-00	.NUT	2	(6X10)
21	703-82540-00-00	.NEUTRAL SWITCH ASSY	1	(6X10)
22	6X1-48282-00-00	.SCREW(M3X05X20)	2	(6X10)
23	6X1-48294-00-00	.SHAFT 1	1	(6X10)
24	6X1-48178-00-00	.PLATE, SHIFT	1	(6X10)
25	6X1-48282-A0-00	.SCREW(M6X10X25)	2	(6X10)
26	6X1-48285-00-00	.GROMMET 2	1	(6X10)
27	6X1-48143-00-00	.PLATE,STOPPER	1	(6X10)
28	6X1-48289-00-00	.SCREW(M5X10)	2	(6X10)
29	703-82591-00-00	.BAND	2	(6X10)
30	6X1-48224-00-00	.COVER, CONTROL LEVER	1	(6X10)
31	6X1-48232-A0-00	.GEAR	1	(6X10)
32	6X1-48233-A0-00	.GEAR 2	1	(6X10)
33	6X1-85590-20-00	.CONTROL UNIT ASSY	1	(6X10)
34	6X1-48119-A0-00	.COVER	1	(6X10)
35	6X1-48353-00-00	.BUSH, RUBBER	1	(6X10)
36	6X1-48517-00-00	.CAP	1	(6X10)
37	6X1-48122-00-00	.GEAR 2	1	(6X10)
38	6X1-48211-A0-00	.HOUSING,1	1	(6X10)
39	6X1-86210-00-00	.MOTOR ASSY	1	(6X10)
40	6X1-48281-A0-00	.SCREW(M6X10X35)	3	(6X10)
41	6X1-14488-00-00	.LABEL, CAUTION	1	(6X10)
42	6X1-48353-10-00	.BUSH, RUBBER	1	(6X10)
43	6X1-48353-20-00	.BUSH, RUBBER	1	(6X10)
44	6X1-48129-00-00	.SCREW(M5X16)	6	(6X10)
45	6X1-48213-00-00	.BACK PLATE 2	1	(6X10)
46	6X1-48555-00-00	.WASHER, WAVE	1	(6X10)
47	6X1-48246-00-00	.SPACER	1	(6X10)
48	92990-05200-00	.WASHER, PLAIN	2	(6X10)
49	92990-05100-00	.WASHER, SPRING	2	(6X10)
50	92990-05300-00	.WASHER, INTERNAL TOOTH	2	(6X10)
51	6X1-48128-00-00	.SCREW(M5X30)	1	(6X10)
52	6X1-13437-00-00	.MARK, CAUTION	1	(6X10)

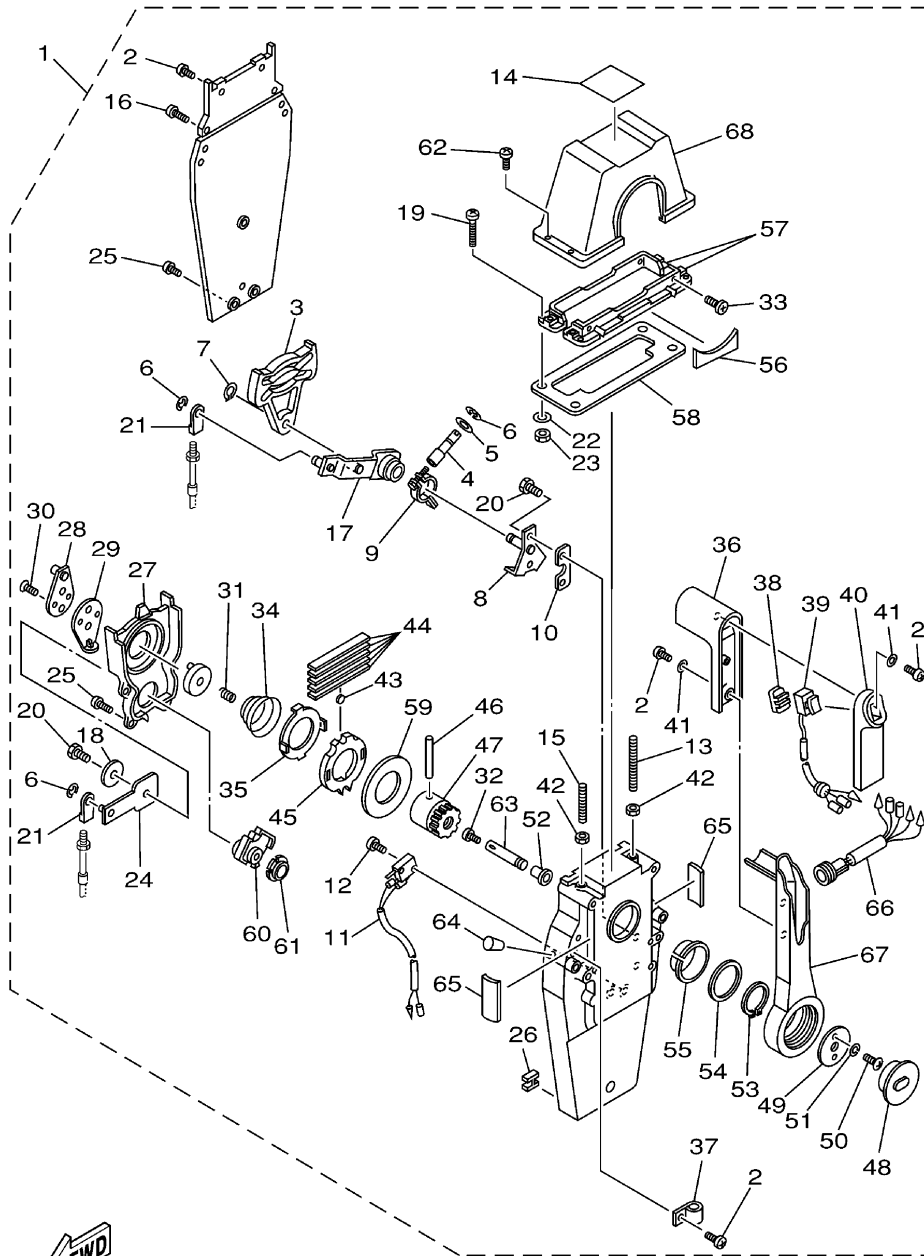


6X10110-2040

Part List

DUAL_STATION_2002 2002 / REMOTE CONTROL ASSY2(JUNCTION)

REF - NO	PART NUMBER	PART NAME	QUANTITY	REMARKS
1	6X1-48208-02-00	JUNCTION BOX(DUAL STATION)	2	(6X10)
2	6X1-48125-00-00	.MARK	1	(6X10)
3	6X1-48229-00-00	.COVER	2	(6X10)
4	6X1-48331-00-00	.HOOK, CABLE	8	(6X10)
5	6X1-48288-00-00	.WASHER, PLAIN	3	(6X10)
6	EL8-48259-00-00	.CIRCLIP 1	5	(6X10)
7	EL8-48127-00-00	.SCREW 1	14	(6X10)
8	6X1-48138-00-00	.CAP, LOCK ARM	4	(6X10)
9	6X1-48333-00-00	.CABLE END(10-32UNF)	4	(6X10)
10	6X1-48354-00-00	.SET-PLATE, CABLE	4	(6X10)
11	6X1-48235-00-00	.COVER 1	2	(6X10)
12	6X1-48261-00-00	.ARM, THROTTLE	1	(6X10)
13	93430-06024-00	.CIRCLIP	3	(6X10)
14	703-48345-01-00	.CABLE END, REMOTE CONTROL 2	1	(6X10)
15	6X1-48361-00-00	.HOOK, CABLE	1	(6X10)
16	6X1-48147-00-00	.PLATE	1	(6X10)
17	98580-05010-00	.SCREW, PAN HEAD	2	(6X10)
18	6X1-48163-00-00	.PIN 1	2	(6X10)
19	6X1-48126-00-00	.GRAPHIC	1	(6X10)
20	6X0-48128-00-00	.SCREW(M6X30)	3	(6X10)
21	6X1-48171-00-00	.BOLT(M8X125X40)	3	(6X10)
22	92990-08600-00	.WASHER, PLATE	3	(6X10)
23	702-48288-00-00	.WASHER, PLAIN	3	(6X10)
24	6X1-48274-01-00	.SHIFT HOUSING COMP	1	(6X10)
25	6X1-48236-00-00	.ROLLER, DETENT	4	(6X10)
26	6X1-48281-00-00	.SCREW(M5X08X12)	4	(6X10)
27	6X1-48232-00-00	.GEAR	2	(6X10)
28	6X1-48233-00-00	.GEAR 2	2	(6X10)
29	6X1-48287-00-00	.WASHER	2	(6X10)
30	6X1-48234-00-00	.BUSHING 1	2	(6X10)
31	6X1-48121-00-00	.GEAR 1	2	(6X10)
32	6X1-48166-00-00	.PLUG	3	(6X10)
33	6X1-48225-00-00	.GRAPHIC	1	(6X10)
34	6X1-48119-00-00	.COVER	1	(6X10)
35	703-82591-00-00	.BAND	1	(6X10)
36	701-48266-00-00	.SPACER	1	(6X10)
37	6X1-48271-02-00	.ARM, SHIFT	1	(6X10)
38	6X2-85885-10-00	..THROTTLE SENSOR ASSY	1	(6X10)
39	6X1-48283-00-00	.SCREW(M5X08X25)	2	(6X10)
40	6X1-48293-00-00	.SPACER, REMOTE CONTROL	2	(6X10)
41	92990-05200-00	.WASHER, PLAIN	3	(6X10)
42	6X1-48165-00-00	.BUSHING	1	(6X10)
43	95380-05600-00	.NUT	1	(6X10)



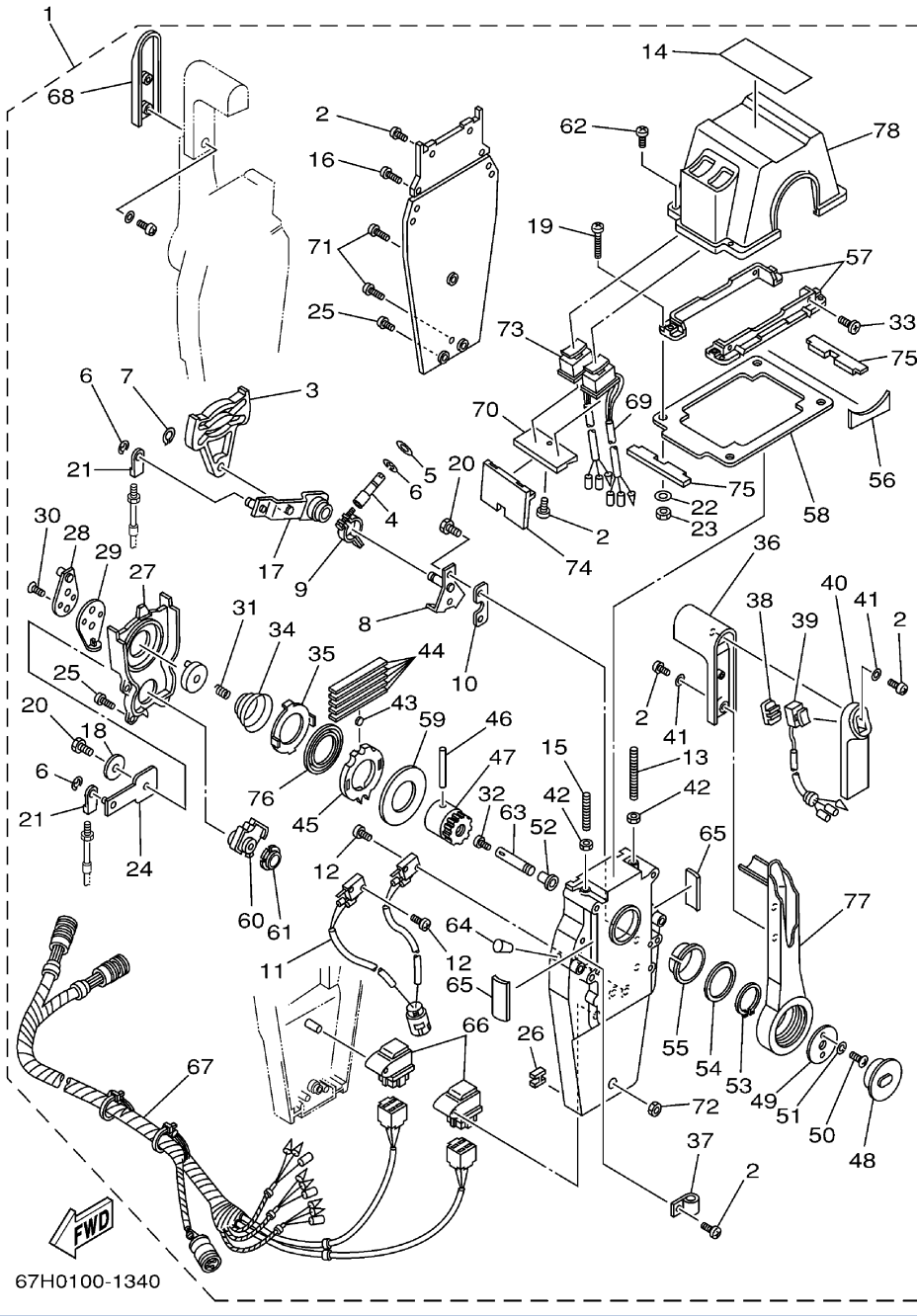
6X10100-1050

Part List

DUAL_STATION_2002 2002 / REMOTE CONTROL ASSY 3

REF - NO	PART NUMBER	PART NAME	QUANTITY	REMARKS
1	704-48205-14-00	REMOTE CONTROL ASSY	1	WITH PT/T SW.(6X10)
2	97890-05016-00	.SCREW, PAN HEAD	6	(6X10)
3	EL8-48251-00-00	.PLATE, CAM	1	(6X10)
4	704-48265-00-00	.SHAFT, FRICTION	1	(6X10)
5	701-48246-00-00	.SPACER	1	(6X10)
6	93430-06024-00	.CIRCLIP	4	(6X10)
7	EL8-48259-00-00	.CIRCLIP 1	1	(6X10)
8	704-48262-00-00	.SHAFT, THROTTLE	1	(6X10)
9	704-48264-00-00	.THROTTLE, FRICTION	1	(6X10)
10	704-48266-00-00	.SPACER	1	(6X10)
11	704-82540-00-00	.NEUTRAL SWITCH ASSY	1	(6X10)
12	6A5-48129-10-00	.SCREW 3	2	(6X10)
13	EL8-48281-00-00	.SCREW	1	(6X10)
14	704-48215-00-00	.GRAPHIC	1	(6X10)
15	704-48281-00-00	.SCREW	1	(6X10)
16	97890-05025-00	.SCREW, PAN HEAD	2	(6X10)
17	704-48261-00-00	.ARM, THROTTLE	1	(6X10)
18	EL8-48191-00-00	.WASHER 1	1	(6X10)
19	704-48283-00-00	.SCREW	4	(6X10)
20	97380-06018-00	.BOLT	3	(6X10)
21	703-48345-01-00	.CABLE END, REMOTE CONTROL 2	2	(6X10)
22	704-48287-00-00	.WASHER	4	(6X10)
23	95380-05600-00	.NUT	4	(6X10)
24	EL8-48271-00-00	.ARM, SHIFT	1	(6X10)
25	EL8-48127-00-00	.SCREW 1	9	(6X10)
26	703-48358-00-00	.ANCHOR, CABLE	1	(6X10)
27	EL8-48231-00-00	.HOUSING, GEAR	1	(6X10)
28	EL8-48241-00-00	.ARM, DRIVE	1	(6X10)
29	EL8-48254-00-00	.STOPPER, THROTTLE ADJUSTING	1	(6X10)
30	92780-06020-00	.SCREW, FLAT HEAD	2	(6X10)
31	EL8-48158-00-00	.SPRING 1	1	(6X10)
32	98580-04006-00	.SCREW, PAN HEAD	1	(6X10)
33	98780-05018-00	.SCREW, FLAT HEAD	4	(6X10)
34	EL8-48244-00-00	.SPRING, FREE ACCEL	1	(6X10)
35	EL8-48245-00-00	.PLATE, LOCK	1	(6X10)
36	704-48222-00-00	.GRIP, CONTROL LEVER	1	(6X10)
37	704-82594-00-00	.CLAMP	1	(6X10)
38	704-48228-00-00	.HOLDER, SWITCH	1	(6X10)
39	704-82563-01-00	.TRIM & TILT SWITCH ASSY	1	(6X10)
40	704-48229-00-00	.GRIP, CONTROL LEVER	1	(6X10)
41	92990-05300-00	.WASHER, INTERNAL TOOTH	3	(6X10)
42	95380-06600-00	.NUT, HEXAGON	2	(6X10)
43	701-48248-00-00	.ROLLER, FREE ACCEL	1	(6X10)
44	703-48238-00-00	.SPRING, DETENT	5	(6X10)
45	EL8-48232-00-00	.GEAR 1	1	(6X10)
46	EL8-48164-00-00	.PIN 2	1	(6X10)
47	704-48242-00-00	.SHAFT, DRIVE	1	(6X10)
48	704-48225-00-00	.COVER	1	(6X10)
49	704-48192-00-00	.WASHER 2	1	(6X10)
50	97890-06018-00	.SCREW, PAN HEAD	2	(6X10)
51	92990-06300-00	.WASHER, INTERNAL TOOTH	2	(6X10)

52	702-48263-00-00	.BUSHING	1	(6X10)
53	EL8-48279-00-00	.CIRCLIP 2	1	(6X10)
54	704-48193-00-00	.WASHER 3	1	(6X10)
55	EL8-48234-00-00	.BUSHING 1	1	(6X10)
56	704-48219-00-00	.COVER, LEAD	1	(6X10)
57	704-48144-00-00	.PLATE, STOPPER 2	2	(6X10)
58	704-48176-00-00	.GROMMET	1	(6X10)
59	703-48192-00-00	.WASHER 2	1	(6X10)
60	EL8-48233-00-00	.GEAR 2	1	(6X10)
61	702-48235-00-00	.BUSHING	1	(6X10)
62	704-48282-00-00	.SCREW	4	(6X10)
63	EL8-48153-10-00	.SHAFT, FREE ACCEL	1	(6X10)
64	704-48166-00-00	.PLUG	1	(6X10)
65	704-48284-00-00	.GROMMET	2	(6X10)
66	704-82541-10-00	.WIRE, LEAD	1	(6X10)
67	704-48221-00-00	.LEVER, CONTROL	1	(6X10)
68	704-48119-00-00	.COVER	1	(6X10)



Part List

DUAL_STATION_2002 2002 / REMOTE CONTROL ASSY 4

REF - NO	PART NUMBER	PART NAME	QUANTITY	REMARKS
1	704-48207-23-00	REMOTE CONTROL ASSY	1	WITH PT/T SW.(6X10)
2	97890-05016-00	.SCREW, PAN HEAD	12	(6X10)
3	EL8-48251-00-00	.PLATE, CAM	2	(6X10)
4	704-48265-00-00	.SHAFT, FRICTION	2	(6X10)
5	701-48246-00-00	.SPACER	2	(6X10)
6	93430-06024-00	.CIRCLIP	8	(6X10)
7	EL8-48259-00-00	.CIRCLIP 1	2	(6X10)
8	704-48262-00-00	.SHAFT, THROTTLE	2	(6X10)
9	704-48264-00-00	.THROTTLE, FRICTION	2	(6X10)
10	704-48266-00-00	.SPACER	2	(6X10)
11	704-82540-10-00	.NEUTRAL SWITCH ASSY	1	(6X10)
12	6A5-48129-10-00	.SCREW 3	4	(6X10)
13	EL8-48281-00-00	.SCREW	2	(6X10)
14	704-48215-10-00	.GRAPHIC	1	(6X10)
15	704-48281-00-00	.SCREW	2	(6X10)
16	97890-05025-00	.SCREW, PAN HEAD	4	(6X10)
17	704-48261-00-00	.ARM, THROTTLE	2	(6X10)
18	EL8-48191-00-00	.WASHER 1	2	(6X10)
19	704-48283-00-00	.SCREW	4	(6X10)
20	97380-06018-00	.BOLT	6	(6X10)
21	703-48345-01-00	.CABLE END, REMOTE CONTROL 2	4	(6X10)
22	704-48287-00-00	.WASHER	4	(6X10)
23	95380-05600-00	.NUT	4	(6X10)
24	EL8-48271-00-00	.ARM, SHIFT	2	(6X10)
25	EL8-48127-00-00	.SCREW 1	16	(6X10)
26	703-48358-00-00	.ANCHOR, CABLE	2	(6X10)
27	EL8-48231-00-00	.HOUSING, GEAR	2	(6X10)
28	EL8-48241-00-00	.ARM, DRIVE	2	(6X10)
29	EL8-48254-00-00	.STOPPER, THROTTLE ADJUSTING	2	(6X10)
30	92780-06020-00	.SCREW, FLAT HEAD	4	(6X10)
31	EL8-48158-00-00	.SPRING 1	2	(6X10)
32	98580-04006-00	.SCREW, PAN HEAD	2	(6X10)
33	98780-05018-00	.SCREW, FLAT HEAD	4	(6X10)
34	EL8-48244-00-00	.SPRING, FREE ACCEL	2	(6X10)
35	EL8-48245-00-00	.PLATE, LOCK	2	(6X10)
36	704-48222-00-00	.GRIP, CONTROL LEVER	2	(6X10)
37	704-82594-00-00	.CLAMP	1	(6X10)
38	704-48228-00-00	.HOLDER, SWITCH	1	(6X10)
39	704-82563-31-00	.TRIM & TILT SWITCH ASSY	1	(6X10)
40	704-48229-00-00	.GRIP, CONTROL LEVER	1	(6X10)
41	92990-05300-00	.WASHER, INTERNAL TOOTH	6	(6X10)
42	95380-06600-00	.NUT, HEXAGON	4	(6X10)
43	701-48248-00-00	.ROLLER, FREE ACCEL	2	(6X10)
44	703-48238-00-00	.SPRING, DETENT	10	(6X10)
45	EL8-48232-00-00	.GEAR 1	2	(6X10)
46	EL8-48164-00-00	.PIN 2	2	(6X10)
47	704-48242-00-00	.SHAFT, DRIVE	2	(6X10)
48	704-48225-00-00	.COVER	2	(6X10)
49	704-48192-00-00	.WASHER 2	2	(6X10)
50	97890-06018-00	.SCREW, PAN HEAD	4	(6X10)
51	92990-06300-00	.WASHER, INTERNAL TOOTH	4	(6X10)

52	702-48263-00-00	.BUSHING	2	(6X10)
53	EL8-48279-00-00	.CIRCLIP 2	2	(6X10)
54	704-48193-00-00	.WASHER 3	2	(6X10)
55	EL8-48234-00-00	.BUSHING 1	2	(6X10)
56	704-48219-00-00	.COVER, LEAD	2	(6X10)
57	704-48144-00-00	.PLATE, STOPPER 2	2	(6X10)
58	704-48176-10-00	.GROMMET	1	(6X10)
59	703-48192-00-00	.WASHER 2	2	(6X10)
60	EL8-48233-00-00	.GEAR 2	2	(6X10)
61	703-48235-00-00	.BUSHING	2	(6X10)
62	704-48282-00-00	.SCREW	4	(6X10)
63	EL8-48153-10-00	.SHAFT, FREE ACCEL	2	(6X10)
64	704-48166-00-00	.PLUG	2	(6X10)
65	704-48284-00-00	.GROMMET	4	(6X10)
66	704-81950-00-00	.RELAY ASSY	2	(6X10)
67	704-82590-10-00	.WIRE HARNESS ASSY	1	(6X10)
68	704-48229-10-00	.GRIP, CONTROL LEVER	1	(6X10)
69	704-82563-E0-00	.TRIM & TILT SWITCH ASSY	1	(6X10)
70	704-48228-10-00	.HOLDER, SWITCH	1	(6X10)
71	704-48128-00-00	.SCREW 2	3	(6X10)
72	704-48156-00-00	.NUT 1	1	(6X10)
73	704-82563-F0-00	.TRIM & TILT SWITCH ASSY	1	(6X10)
74	704-48285-00-00	.GROMMET 2	1	(6X10)
75	704-48286-00-00	.GROMMET 3	2	(6X10)
76	704-48178-00-00	.PLATE, SHIFT	2	(6X10)
77	704-48221-00-00	.LEVER, CONTROL	2	(6X10)
78	704-48119-20-00	.COVER	1	(6X10)