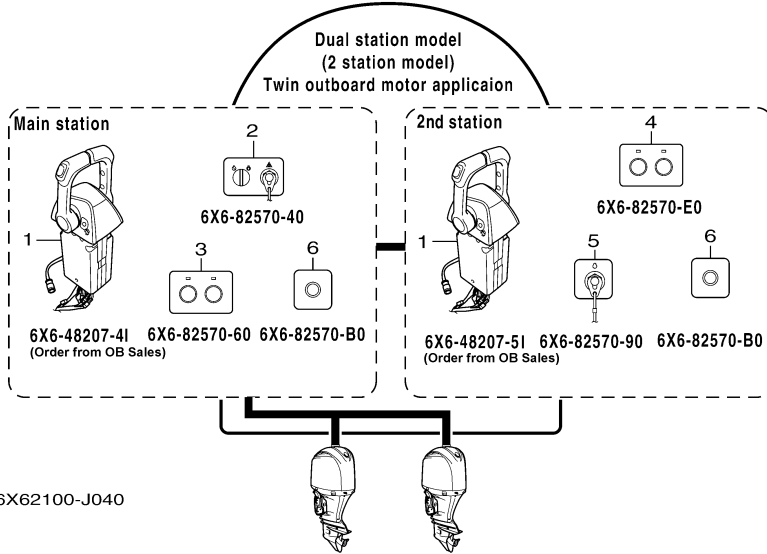
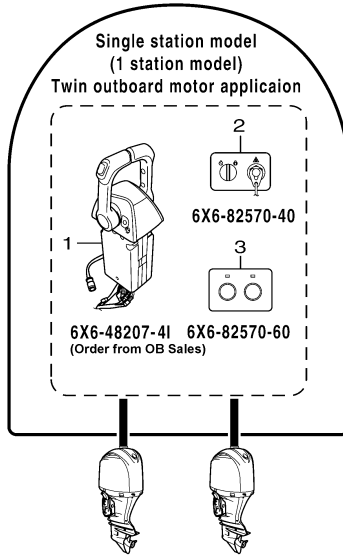


6X62100-J020

# Part List

COMMAND\_LINK\_PLUS 0310 / DEC LAYOUT CHART (SINGLE)

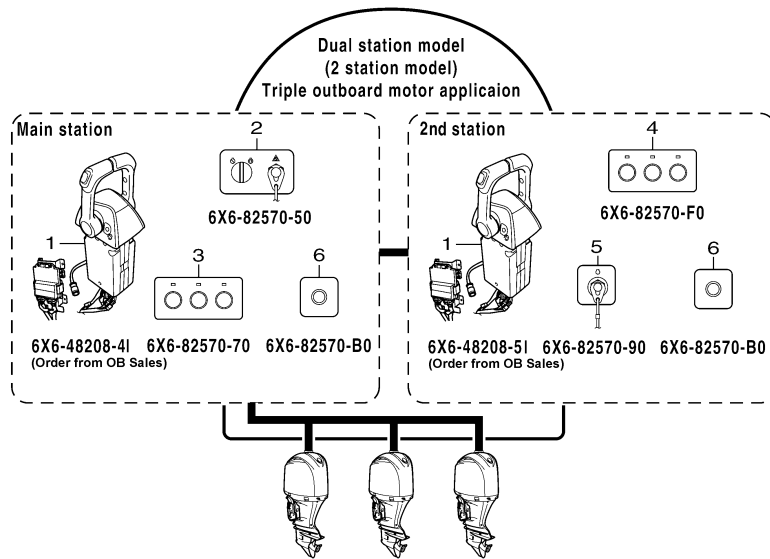
REF - NO	PART NUMBER	PART NAME	QUANTITY	REMARKS
1	6X6-48205-41-00	REMOTE CONTROL ASSY (SINGLE)	1	ORDER FROM O/B SALES
1	6X6-48205-51-00	REMOTE CONTROL ASSY (SINGLE)	1	ORDER FROM O/B SALES
2	6X6-82570-30-00	PANEL SWITCH ASSY	1	1 OR 2 STATION MAIN
3	6X6-82570-80-00	PANEL SWITCH ASSY	1	2 STATION 2ND HELM
4	6X6-82570-90-00	PANEL SWITCH ASSY	1	2 STATION 2ND HELM
5	6X6-82570-B0-00	PANEL SWITCH ASSY	2	2 STATION MAIN & 2ND HELM



# Part List

COMMAND\_LINK\_PLUS 0310 / DEC LAYOUT CHART (TWIN)

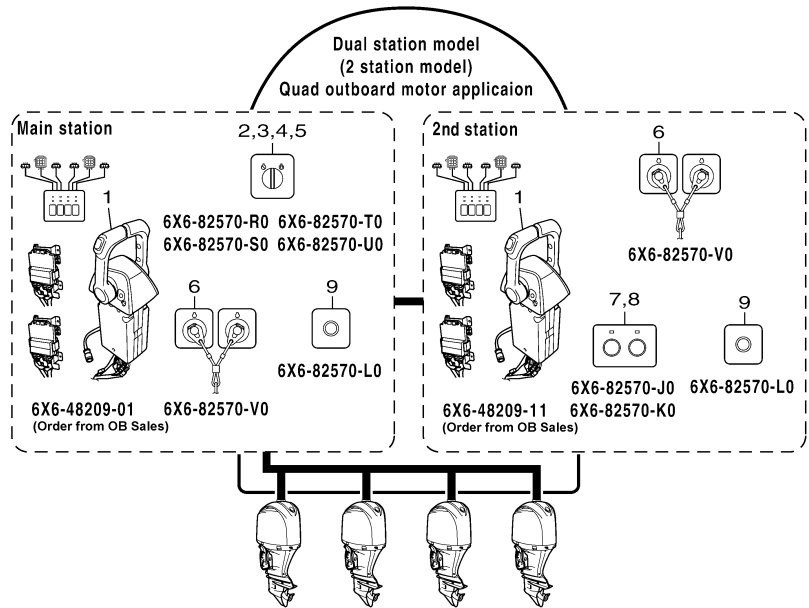
REF - NO	PART NUMBER	PART NAME	QUANTITY	REMARKS
1	6X6-48207-41-00	REMOTE CONTROL ASSY (TWIN)	1	ORDER FROM O/B SALES
1	6X6-48207-51-00	REMOTE CONTROL ASSY (TWIN)	1	ORDER FROM O/B SALES
2	6X6-82570-40-00	PANEL SWITCH ASSY	1	1 OR 2 STATION MAIN
3	6X6-82570-60-00	PANEL SWITCH ASSY	1	1 OR 2 STATION MAIN
4	6X6-82570-E0-00	PANEL SWITCH ASSY	1	2 STATION 2ND HELM
5	6X6-82570-90-00	PANEL SWITCH ASSY	1	2 STATION 2ND HELM
6	6X6-82570-B0-00	PANEL SWITCH ASSY	2	2 STATION MAIN & 2ND HELM



# Part List

COMMAND\_LINK\_PLUS 0310 / DEC LAYOUT CHART (TRIPLE)

REF - NO	PART NUMBER	PART NAME	QUANTITY	REMARKS
1	6X6-48208-41-00	REMOTE CONTROL ASSY (TRIPLE)	1	ORDER FROM O/B SALES
1	6X6-48208-51-00	REMOTE CONTROL ASSY (TRIPLE)	1	ORDER FROM O/B SALES
2	6X6-82570-50-00	PANEL SWITCH ASSY	1	1 OR 2 STATION MAIN
3	6X6-82570-70-00	PANEL SWITCH ASSY	1	1 OR 2 STATION MAIN
4	6X6-82570-F0-00	PANEL SWITCH ASSY	1	2 STATION 2ND HELM
5	6X6-82570-90-00	PANEL SWITCH ASSY	1	2 STATION 2ND HELM
6	6X6-82570-B0-00	PANEL SWITCH ASSY	2	2 STATION MAIN & 2ND HELM



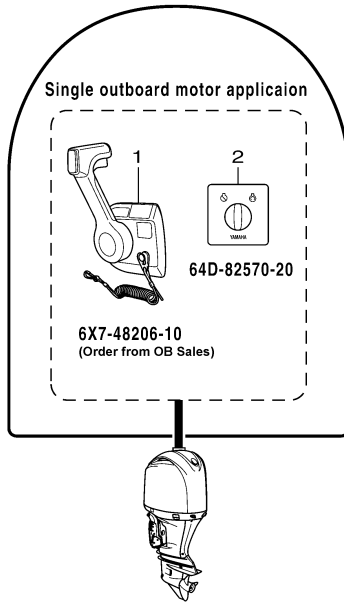
6X62100-J070

# Part List

COMMAND\_LINK\_PLUS 0310 / DEC LAYOUT CHART (QUAD)

REF - NO	PART NUMBER	PART NAME	QUANTITY	REMARKS
1	6X6-48209-01-00	REMOTE CONTROL ASSY (QUAD)	1	ORDER FROM O/B SALES
2	6X6-82570-R0-00	PANEL SWITCH ASSY (FOR PORT)	1	1 OR 2 STATION MAIN
3	6X6-82570-S0-00	PANEL SWITCH ASSY (FOR C-PORT)	1	1 OR 2 STATION MAIN
4	6X6-82570-T0-00	PANEL SWITCH ASSY (FOR C-STBD)	1	1 OR 2 STATION MAIN
5	6X6-82570-U0-00	PANEL SWITCH ASSY (FOR STBD)	1	1 OR 2 STATION MAIN
6	6X6-82570-V0-00	PANEL SWITCH ASSY	2	2 STATION MAIN & 2ND HELM
7	6X6-82570-J0-00	PANEL SWITCH ASSY (PORT- P/CP)	1	2 STATION 2ND HELM
8	6X6-82570-K0-00	PANEL SWITCH ASSY (STBD- CS/S)	1	2 STATION 2ND HELM
9	6X6-82570-L0-00	PANEL SWITCH ASSY	2	2 STATION MAIN & 2ND HELM





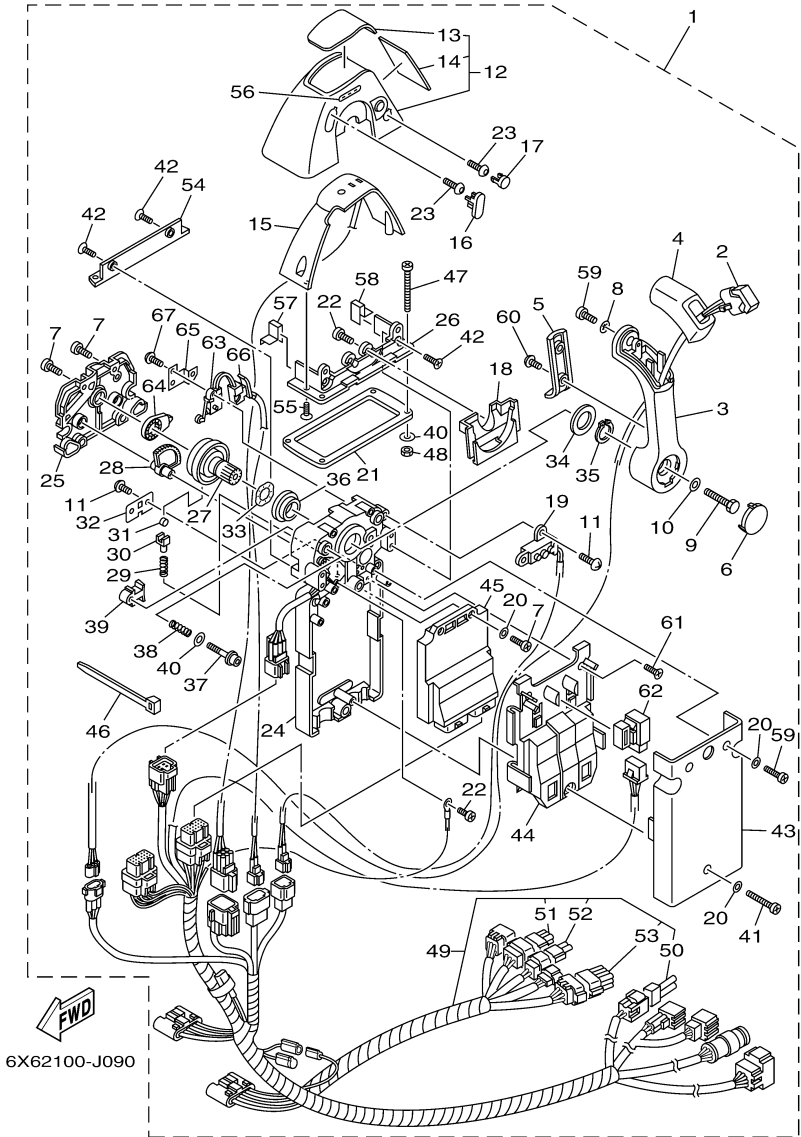
6X62100-J080

# Part List

COMMAND\_LINK\_PLUS 0310 / DEC LAYOUT CHART (6X7 FLUSH)

REF - NO	PART NUMBER	PART NAME	QUANTITY	REMARKS
1	6X7-48206-10-00	REMOTE CONTROL ASSY	1	ORDER FROM O/B SALES
2	64D-82570-20-00	PANEL SWITCH ASSY	1	

### 6X6 REMOTE CONTROL (SINGLE)



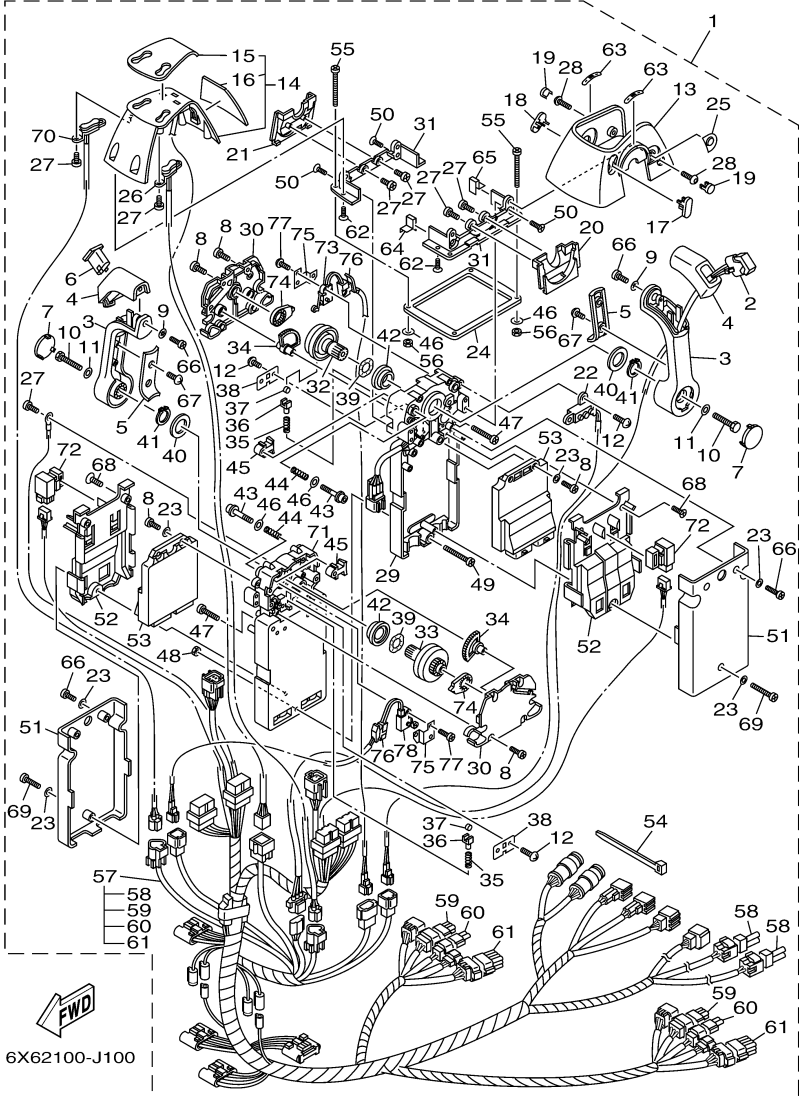
## Part List

COMMAND\_LINK\_PLUS 0310 / DEC REMOTE CONTROL (SINGLE)

REF - NO	PART NUMBER	PART NAME	QUANTITY	REMARKS
1	6X6-48205-41-00	REMOTE CONTROL ASSY (SINGLE)	1	ORDER FROM O/B SALES
1	6X6-48205-51-00	REMOTE CONTROL ASSY (SINGLE)	1	ORDER FROM O/B SALES
2	6X6-82563-00-00	.TRIM & TILT SWITCH ASSY	1	
3	6X6-48221-00-00	.LEVER, CONTROL	1	
4	6X6-48222-00-00	.GRIP, CONTROL LEVER	1	
5	6X6-48224-00-00	.COVER, CONTROL LEVER	1	
6	6X6-48224-10-00	.COVER, CONTROL LEVER	1	
7	98580-05014-00	.SCREW, PAN HEAD	6	
8	92990-05300-00	.WASHER, INTERNAL TOOTH	1	
9	6X6-48171-00-00	.BOLT	1	
10	92990-08600-00	.WASHER, PLATE	1	
11	EL8-48127-00-00	.SCREW 1	4	
12	6X6-48119-04-00	.COVER	1	
13	6X6-48215-30-00	..GRAPHIC	1	
14	6X6-48216-00-00	..GRAPHIC	1	
15	6X6-84301-00-00	.PILOT LIGHT ASSY 1	1	
16	6X6-48167-00-00	.PLUG	1	
17	6X6-48167-50-00	.PLUG	1	
18	6X6-48219-00-00	.COVER, LEAD	1	
19	6X6-8259E-00-00	.SWITCH ASSY	1	
20	92990-05200-00	.WASHER, PLAIN	5	
21	6X6-48176-00-00	.GROMMET	1	
22	98580-04010-00	.SCREW, PAN HEAD	3	
23	92D80-05016-00	.BOLT, SOCKET HEAD	2	
24	6X6-481A0-01-00	.REMO-CON CASE ASSY	1	
25	6X6-48212-00-00	.BACK PLATE 1	1	
26	6X6-48144-10-00	.PLATE, STOPPER 2	1	
27	6X6-48242-01-00	.SHAFT, DRIVE	1	
28	6X6-48233-01-00	.GEAR 2	1	
29	6X6-48238-00-00	.SPRING, DETENT	1	
30	6X6-48237-00-00	.ADAPTOR	1	
31	6X6-48236-00-00	.ROLLER, DETENT	1	
32	6X6-48189-00-00	.RETAINER	1	
33	703-48198-00-00	.WASHER, WAVE	1	
34	6X6-48193-00-00	.WASHER 3	1	
35	6X6-48118-00-00	.CLIP, SHIFT LEVER	1	
36	6X6-48234-00-00	.BUSHING 1	1	
37	6X6-48267-00-00	.BOLT SET	1	
38	6X6-48158-00-00	.SPRING 1	1	
39	6X6-48264-00-00	.FRICTION, THROTTLE	1	
40	704-48287-00-00	.WASHER	5	
41	6X6-81145-00-00	.SCREW 1	1	
42	98780-05014-00	.SCREW, FLAT HEAD	4	
43	6X6-48213-00-00	.BACK PLATE 2	1	
44	6X6-48228-00-00	.HOLDER, SWITCH	1	
45	6X6-85590-20-00	.CONTROL UNIT ASSY	1	
46	703-82591-00-00	.BAND	4	
47	97780-50145-00	.SCREW, TAPPING	4	UR
47	98580-05060-00	.SCREW, PAN HEAD	4	UR
48	95380-05600-00	.NUT	4	
49	6X6-82590-A0-00	.WIRE HARNESS ASSY	1	FOR 6X6-48205-41

49	6X6-82590-D0-00	..WIRE HARNESS ASSY	1	FOR 6X6-48205-51
50	6X6-82585-20-00	..CAP 2 (2P)	1	
51	6X6-82582-60-00	..CAP 1 (6P)	1	FOR 6X6-82590-A0
52	6X6-82582-40-00	..CAP 1 (4P)	1	FOR 6X6-82590-A0
53	6X6-82582-B0-00	..CAP 1 (12P)	1	FOR 6X6-82590-A0
54	6X6-48144-00-00	.PLATE, STOPPER 2	1	
55	6X6-48129-00-00	.SCREW 3	2	
56	6X6-44191-00-00	.INDICATOR, SHIFT	1	
57	6X6-48176-50-00	.GROMMET	1	
58	6X6-48176-60-00	.GROMMET	1	
59	6X6-48127-00-00	.SCREW 1	3	
60	6X6-48128-00-00	.SCREW 2	2	
61	6X6-81146-00-00	.SCREW 2	2	
62	704-81950-10-00	.RELAY ASSY	1	
63	6X6-82540-00-00	.NEUTRAL SWITCH ASSY	1	
64	6X6-48241-00-00	.ARM, DRIVE	1	
65	6X6-48245-01-00	.PLATE, LOCK	1	
66	6X6-82545-00-00	.GROMMET	1	
67	6X6-8252V-00-00	.SCREW, SPECIAL	2	

### 6X6 REMOTE CONTROL (TWIN)



## Part List

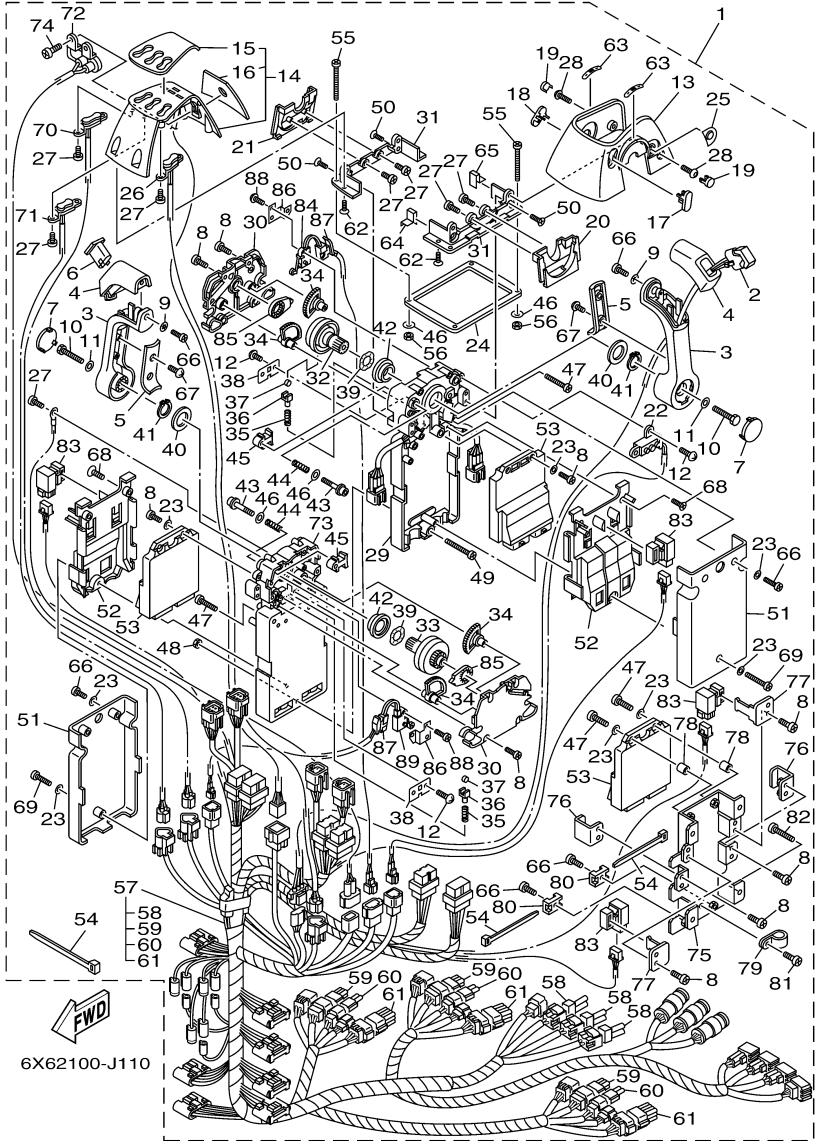
COMMAND\_LINK\_PLUS 0310 / DEC REMOTE CONTROL (TWIN)

REF - NO	PART NUMBER	PART NAME	QUANTITY	REMARKS
1	6X6-48207-41-00	REMOTE CONTROL ASSY (TWIN)	1	ORDER FROM O/B SALES
1	6X6-48207-51-00	REMOTE CONTROL ASSY (TWIN)	1	ORDER FROM O/B SALES
2	6X6-82563-00-00	.TRIM & TILT SWITCH ASSY	1	
3	6X6-48221-00-00	.LEVER, CONTROL	2	
4	6X6-48222-00-00	.GRIP, CONTROL LEVER	2	
5	6X6-48224-00-00	.COVER, CONTROL LEVER	2	
6	6X6-48222-10-00	.GRIP, CONTROL LEVER	1	
7	6X6-48224-10-00	.COVER, CONTROL LEVER	2	
8	98580-05014-00	.SCREW, PAN HEAD	12	
9	92990-05300-00	.WASHER, INTERNAL TOOTH	2	
10	6X6-48171-00-00	.BOLT	2	
11	92990-08600-00	.WASHER, PLATE	2	
12	EL8-48127-00-00	.SCREW 1	6	
13	6X6-48119-10-00	.COVER	1	
14	6X6-84301-13-00	.PILOT LIGHT ASSY 1	1	
15	6X6-48215-40-00	..GRAPHIC	1	
16	6X6-48216-10-00	..GRAPHIC	1	
17	6X6-48167-10-00	.PLUG	1	
18	6X6-48167-20-00	.PLUG	1	
19	6X6-48167-60-00	.PLUG	2	
20	6X6-48219-10-00	.COVER, LEAD	1	
21	6X6-48219-20-00	.COVER, LEAD	1	
22	6X6-8259E-00-00	.SWITCH ASSY	1	
23	92990-05200-00	.WASHER, PLAIN	10	
24	6X6-48176-10-00	.GROMMET	1	
25	6X6-48225-00-00	.COVER	1	
26	6X6-82563-40-00	.TRIM & TILT SWITCH ASSY	1	
27	98580-04010-00	.SCREW, PAN HEAD	9	
28	92D80-05016-00	.BOLT, SOCKET HEAD	2	
29	6X6-481A0-01-00	.REMO-CON CASE ASSY	1	
30	6X6-48212-00-00	.BACK PLATE 1	2	
31	6X6-48144-10-00	.PLATE, STOPPER 2	2	
32	6X6-48242-01-00	.SHAFT, DRIVE	1	
33	6X6-48242-11-00	.SHAFT, DRIVE	1	
34	6X6-48233-01-00	.GEAR 2	2	
35	6X6-48238-00-00	.SPRING, DETENT	2	
36	6X6-48237-00-00	.ADAPTOR	2	
37	6X6-48236-00-00	.ROLLER, DETENT	2	
38	6X6-48189-00-00	.RETAINER	2	
39	703-48198-00-00	.WASHER, WAVE	2	
40	6X6-48193-00-00	.WASHER 3	2	
41	6X6-48118-00-00	.CLIP, SHIFT LEVER	2	
42	6X6-48234-00-00	.BUSHING 1	2	
43	6X6-48267-00-00	.BOLT SET	2	
44	6X6-48158-00-00	.SPRING 1	2	
45	6X6-48264-00-00	.FRICTION, THROTTLE	2	
46	704-48287-00-00	.WASHER	6	
47	98580-05025-00	.SCREW, PAN HEAD	2	
48	704-48156-00-00	.NUT 1	1	
49	704-48283-00-00	.SCREW	1	
50	98780-05014-00	.SCREW, FLAT HEAD	4	

51	6X6-48213-00-00	.BACK PLATE 2	2	
52	6X6-48228-00-00	.HOLDER, SWITCH	2	
53	6X6-85590-20-00	.CONTROL UNIT ASSY	2	
54	703-82591-00-00	.BAND	8	
55	97780-50145-00	.SCREW, TAPPING	4	UR
55	98580-05060-00	.SCREW, PAN HEAD	4	UR
56	95380-05600-00	.NUT	4	
57	6X6-82590-B0-00	.WIRE HARNESS ASSY	1	FOR 6X6-48207-41
57	6X6-82590-E0-00	..WIRE HARNESS ASSY	1	FOR 6X6-48207-51
58	6X6-82585-20-00	..CAP 2 (2P)	2	
59	6X6-82582-60-00	..CAP 1 (6P)	2	FOR 6X6-82590-B0
60	6X6-82582-40-00	..CAP 1 (4P)	2	FOR 6X6-82590-B0
61	6X6-82582-B0-00	..CAP 1 (12P)	2	FOR 6X6-82590-B0
62	6X6-48129-00-00	.SCREW 3	4	
63	6X6-44191-00-00	.INDICATOR, SHIFT	2	
64	6X6-48176-50-00	.GROMMET	1	
65	6X6-48176-60-00	.GROMMET	1	
66	6X6-48127-00-00	.SCREW 1	6	
67	6X6-48128-00-00	.SCREW 2	4	
68	6X6-81146-00-00	.SCREW 2	4	
69	6X6-81145-00-00	.SCREW 1	2	
70	6X6-82563-50-00	.TRIM & TILT SWITCH ASSY	1	
71	6X6-481A0-21-00	.REMO-CON CASE ASSY	1	
72	704-81950-10-00	.RELAY ASSY	2	
73	6X6-82540-00-00	.NEUTRAL SWITCH ASSY	1	
74	6X6-48241-00-00	.ARM, DRIVE	2	
75	6X6-48245-01-00	.PLATE, LOCK	2	
76	6X6-82545-00-00	.GROMMET	2	
77	6X6-8252V-00-00	.SCREW, SPECIAL	4	
78	6X6-82540-10-00	.NEUTRAL SWITCH ASSY	1	



### 6X6 REMOTE CONTROL (TRIPLE)



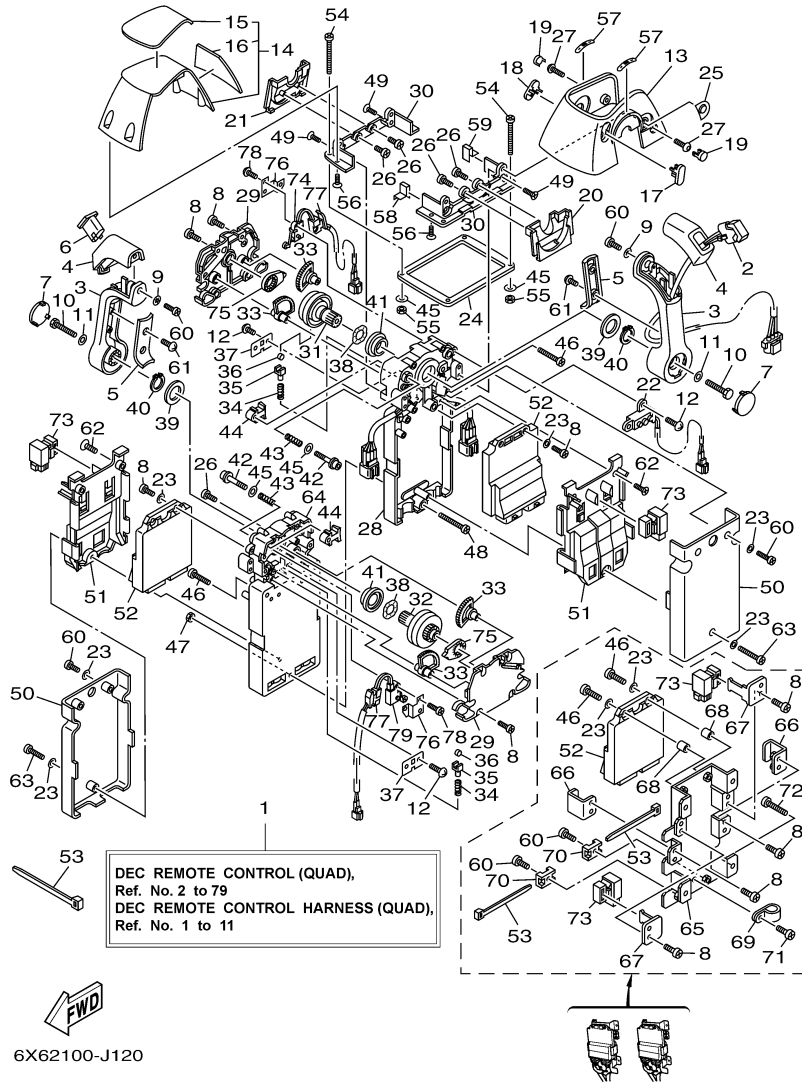
## Part List

COMMAND\_LINK\_PLUS 0310 / DEC REMOTE CONTROL (TRIPLE)

REF - NO	PART NUMBER	PART NAME	QUANTITY	REMARKS
1	6X6-48208-41-00	REMOTE CONTROL ASSY (TRIPLE)	1	ORDER FROM O/B SALES
1	6X6-48208-51-00	REMOTE CONTROL ASSY (TRIPLE)	1	ORDER FROM O/B SALES
2	6X6-82563-00-00	.TRIM & TILT SWITCH ASSY	1	
3	6X6-48221-00-00	.LEVER, CONTROL	2	
4	6X6-48222-00-00	.GRIP, CONTROL LEVER	2	
5	6X6-48224-00-00	.COVER, CONTROL LEVER	2	
6	6X6-48222-10-00	.GRIP, CONTROL LEVER	1	
7	6X6-48224-10-00	.COVER, CONTROL LEVER	2	
8	98580-05014-00	.SCREW, PAN HEAD	20	
9	92990-05300-00	.WASHER, INTERNAL TOOTH	2	
10	6X6-48171-00-00	.BOLT	2	
11	92990-08600-00	.WASHER, PLATE	2	
12	EL8-48127-00-00	.SCREW 1	6	
13	6X6-48119-10-00	.COVER	1	
14	6X6-84301-23-00	.PILOT LIGHT ASSY 1	1	
15	6X6-48215-50-00	..GRAPHIC	1	
16	6X6-48216-20-00	..GRAPHIC	1	
17	6X6-48167-10-00	.PLUG	1	
18	6X6-48167-20-00	.PLUG	1	
19	6X6-48167-60-00	.PLUG	2	
20	6X6-48219-10-00	.COVER, LEAD	1	
21	6X6-48219-20-00	.COVER, LEAD	1	
22	6X6-8259E-00-00	.SWITCH ASSY	1	
23	92990-05200-00	.WASHER, PLAIN	12	
24	6X6-48176-10-00	.GROMMET	1	
25	6X6-48225-00-00	.COVER	1	
26	6X6-82563-40-00	.TRIM & TILT SWITCH ASSY	1	
27	98580-04010-00	.SCREW, PAN HEAD	11	
28	92D80-05016-00	.BOLT, SOCKET HEAD	2	
29	6X6-481A0-11-00	.REMO-CON CASE ASSY	1	
30	6X6-48212-00-00	.BACK PLATE 1	2	
31	6X6-48144-10-00	.PLATE, STOPPER 2	2	
32	6X6-48242-01-00	.SHAFT, DRIVE	1	
33	6X6-48242-11-00	.SHAFT, DRIVE	1	
34	6X6-48233-01-00	.GEAR 2	4	
35	6X6-48238-00-00	.SPRING, DETENT	2	
36	6X6-48237-00-00	.ADAPTOR	2	
37	6X6-48236-00-00	.ROLLER, DETENT	2	
38	6X6-48189-00-00	.RETAINER	2	
39	703-48198-00-00	.WASHER, WAVE	2	
40	6X6-48193-00-00	.WASHER 3	2	
41	6X6-48118-00-00	.CLIP, SHIFT LEVER	2	
42	6X6-48234-00-00	.BUSHING 1	2	
43	6X6-48267-00-00	.BOLT SET	2	
44	6X6-48158-00-00	.SPRING 1	2	
45	6X6-48264-00-00	.FRICTION, THROTTLE	2	
46	704-48287-00-00	.WASHER	6	
47	98580-05025-00	.SCREW, PAN HEAD	4	
48	704-48156-00-00	.NUT 1	1	
49	704-48283-00-00	.SCREW	1	
50	98780-05014-00	.SCREW, FLAT HEAD	4	

51	6X6-48213-00-00	.BACK PLATE 2	2	
52	6X6-48228-00-00	.HOLDER, SWITCH	2	
53	6X6-85590-20-00	.CONTROL UNIT ASSY	3	
54	703-82591-00-00	.BAND	10	
55	97780-50145-00	.SCREW, TAPPING	4	UR
55	98580-05060-00	.SCREW, PAN HEAD	4	UR
56	95380-05600-00	.NUT	4	
57	6X6-82590-C0-00	..WIRE HARNESS ASSY	1	FOR 6X6-48208-41
57	6X6-82590-F0-00	..WIRE HARNESS ASSY	1	FOR 6X6-48208-51
58	6X6-82585-20-00	..CAP 2 (2P)	3	
59	6X6-82582-60-00	..CAP 1 (6P)	3	FOR 6X6-82590-C0
60	6X6-82582-40-00	..CAP 1 (4P)	3	FOR 6X6-82590-C0
61	6X6-82582-B0-00	..CAP 1 (12P)	3	FOR 6X6-82590-C0
62	6X6-48129-00-00	.SCREW 3	4	
63	6X6-44191-00-00	.INDICATOR, SHIFT	2	
64	6X6-48176-50-00	.GROMMET	1	
65	6X6-48176-60-00	.GROMMET	1	
66	6X6-48127-00-00	.SCREW 1	8	
67	6X6-48128-00-00	.SCREW 2	4	
68	6X6-81146-00-00	.SCREW 2	4	
69	6X6-81145-00-00	.SCREW 1	2	
70	6X6-82563-50-00	.TRIM & TILT SWITCH ASSY	1	
71	6X6-82563-60-00	.TRIM & TILT SWITCH ASSY	1	
72	6X6-8259F-10-00	.SWITCH ASSY	1	
73	6X6-481A0-31-00	.REMO-CON CASE ASSY	1	
74	98780-05010-00	.SCREW, FLAT HEAD	2	
75	6X6-48211-10-00	.HOUSING,1	1	
76	6X6-85557-00-00	.HOLDER	2	
77	6X6-82591-00-00	.BAND	2	
78	6X6-8252S-00-00	.SPACER, 1	2	
79	6X6-82584-00-00	.CLAMP	1	
80	6X6-82581-00-00	.STAY, CORD CLAMP	2	
81	6X7-48127-00-00	.SCREW 1	1	
82	6X0-48128-00-00	.SCREW(M6X30)	4	
83	704-81950-10-00	.RELAY ASSY	4	
84	6X6-82540-00-00	.NEUTRAL SWITCH ASSY	1	
85	6X6-48241-00-00	.ARM, DRIVE	2	
86	6X6-48245-01-00	.PLATE, LOCK	2	
87	6X6-82545-00-00	.GROMMET	2	
88	6X6-8252V-00-00	.SCREW, SPECIAL	4	
89	6X6-82540-10-00	.NEUTRAL SWITCH ASSY	1	

### 6X6 REMOTE CONTROL (QUAD)



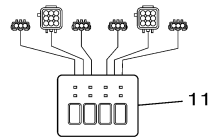
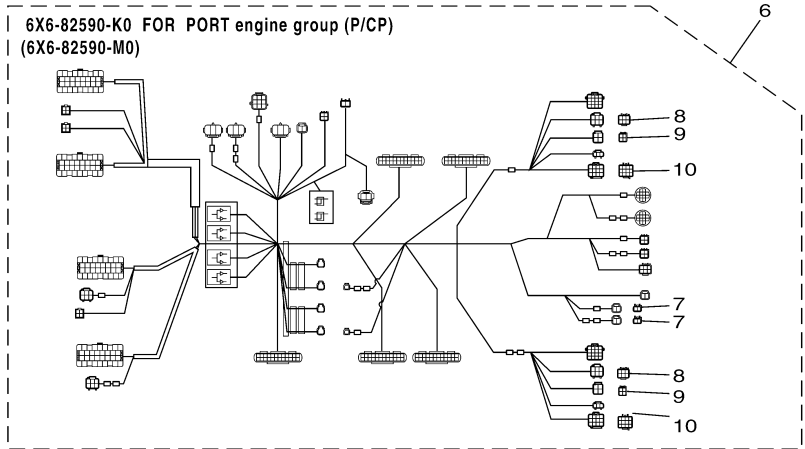
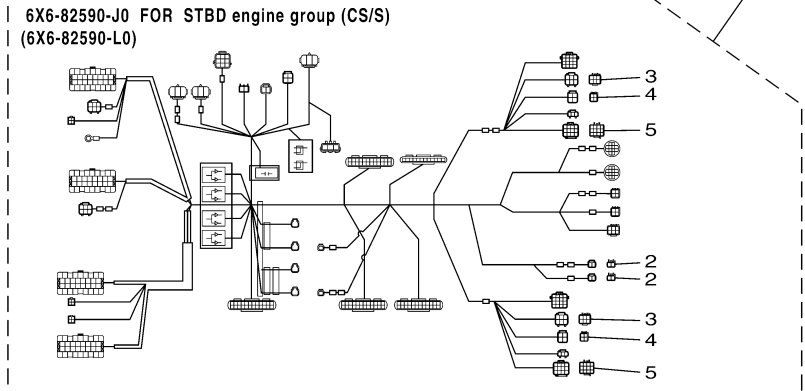
## Part List

COMMAND\_LINK\_PLUS 0310 / DEC REMOTE CONTROL (QUAD)

REF - NO	PART NUMBER	PART NAME	QUANTITY	REMARKS
1	6X6-48209-01-00	REMOTE CONTROL ASSY (QUAD)	1	ORDER FROM O/B SALES
1	6X6-48209-11-00	REMOTE CONTROL ASSY (QUAD)	1	ORDER FROM O/B SALES
2	6X6-82563-00-00	TRIM & TILT SWITCH ASSY	1	
3	6X6-48221-00-00	LEVER, CONTROL	2	
4	6X6-48222-00-00	GRIP, CONTROL LEVER	2	
5	6X6-48224-00-00	COVER, CONTROL LEVER	2	
6	6X6-48222-10-00	GRIP, CONTROL LEVER	1	
7	6X6-48224-10-00	COVER, CONTROL LEVER	2	
8	98580-05014-00	.SCREW, PAN HEAD	28	
9	92990-05300-00	WASHER, INTERNAL TOOTH	2	
10	6X6-48171-00-00	.BOLT	2	
11	92990-08600-00	WASHER, PLATE	2	
12	EL8-48127-00-00	.SCREW 1	6	
13	6X6-48119-10-00	COVER	1	
14	6X6-84301-30-00	PILOT LIGHT ASSY 1	1	
15	6X6-48215-70-00	.GRAPHIC	1	
16	6X6-48216-10-00	.GRAPHIC	1	
17	6X6-48167-10-00	PLUG	1	
18	6X6-48167-20-00	PLUG	1	
19	6X6-48167-60-00	PLUG	2	
20	6X6-48219-10-00	COVER, LEAD	1	
21	6X6-48219-20-00	COVER, LEAD	1	
22	6X6-8259E-00-00	SWITCH ASSY	1	
23	92990-05200-00	.WASHER, PLAIN	14	
24	6X6-48176-10-00	GROMMET	1	
25	6X6-48225-00-00	COVER	1	
26	98580-04010-00	SCREW, PAN HEAD	5	
27	92D80-05016-00	BOLT, SOCKET HEAD	2	
28	6X6-481A0-11-00	REMO-CON. CASE ASSY	1	
29	6X6-48212-00-00	BACK PLATE 1	2	
30	6X6-48144-10-00	PLATE, STOPPER 2	2	
31	6X6-48242-01-00	SHAFT, DRIVE	1	
32	6X6-48242-11-00	SHAFT, DRIVE	1	
33	6X6-48233-01-00	GEAR 2	4	
34	6X6-48238-00-00	.SPRING, DETENT	2	
35	6X6-48237-00-00	.ADAPTOR	2	
36	6X6-48236-00-00	.ROLLER, DETENT	2	
37	6X6-48189-00-00	RETAINER	2	
38	703-48198-00-00	.WASHER, WAVE	2	
39	6X6-48193-00-00	.WASHER 3	2	
40	6X6-48118-00-00	.CLIP, SHIFT LEVER	2	
41	6X6-48234-00-00	.BUSHING 1	2	
42	6X6-48267-00-00	.BOLT SET	2	
43	6X6-48158-00-00	.SPRING 1	2	
44	6X6-48264-00-00	.FRICTION, THROTTLE	2	
45	704-48287-00-00	.WASHER	6	
46	98580-05025-00	.SCREW, PAN HEAD	6	
47	704-48156-00-00	.NUT 1	1	
48	704-48283-00-00	SCREW	1	
49	98780-05014-00	SCREW, FLAT HEAD	4	
50	6X6-48213-00-00	BACK PLATE 2	2	

51	6X6-48228-00-00	HOLDER, SWITCH	2	
52	6X6-85590-20-00	.CONTROL UNIT ASSY	4	
53	703-82591-00-00	.BAND	12	
54	97780-50145-00	SCREW, TAPPING	4	UR
54	98580-05060-00	SCREW, PAN HEAD	4	UR
55	95380-05600-00	NUT	4	
56	6X6-48129-00-00	SCREW 3	4	
57	6X6-44191-00-00	INDICATOR, SHIFT	2	
58	6X6-48176-50-00	GROMMET	1	
59	6X6-48176-60-00	GROMMET	1	
60	6X6-48127-00-00	SCREW 1	10	
61	6X6-48128-00-00	.SCREW 2	4	
62	6X6-81146-00-00	SCREW 2	4	
63	6X6-81145-00-00	SCREW 1	2	
64	6X6-481A0-31-00	REMO-CON. CASE ASSY	1	
65	6X6-48211-10-00	.HOUSING,1	2	
66	6X6-85557-00-00	.HOLDER	4	
67	6X6-82591-00-00	.BAND	4	
68	6X6-8252S-00-00	.SPACER, 1	4	
69	6X6-82584-00-00	.CLAMP	2	
70	6X6-82581-00-00	.STAY, CORD CLAMP	4	
71	6X7-48127-00-00	.SCREW 1	2	
72	6X0-48128-00-00	.SCREW(M6X30)	8	
73	704-81950-10-00	.RELAY ASSY	6	
74	6X6-82540-00-00	.NEUTRAL SWITCH ASSY	1	
75	6X6-48241-00-00	.ARM, DRIVE	2	
76	6X6-48245-01-00	.PLATE, LOCK	2	
77	6X6-82545-00-00	GROMMET	2	
78	6X6-8252V-00-00	.SCREW, SPECIAL	4	
79	6X6-82540-10-00	NEUTRAL SWITCH ASSY	1	

### 6X6 REMOTE CONTROL (QUAD)



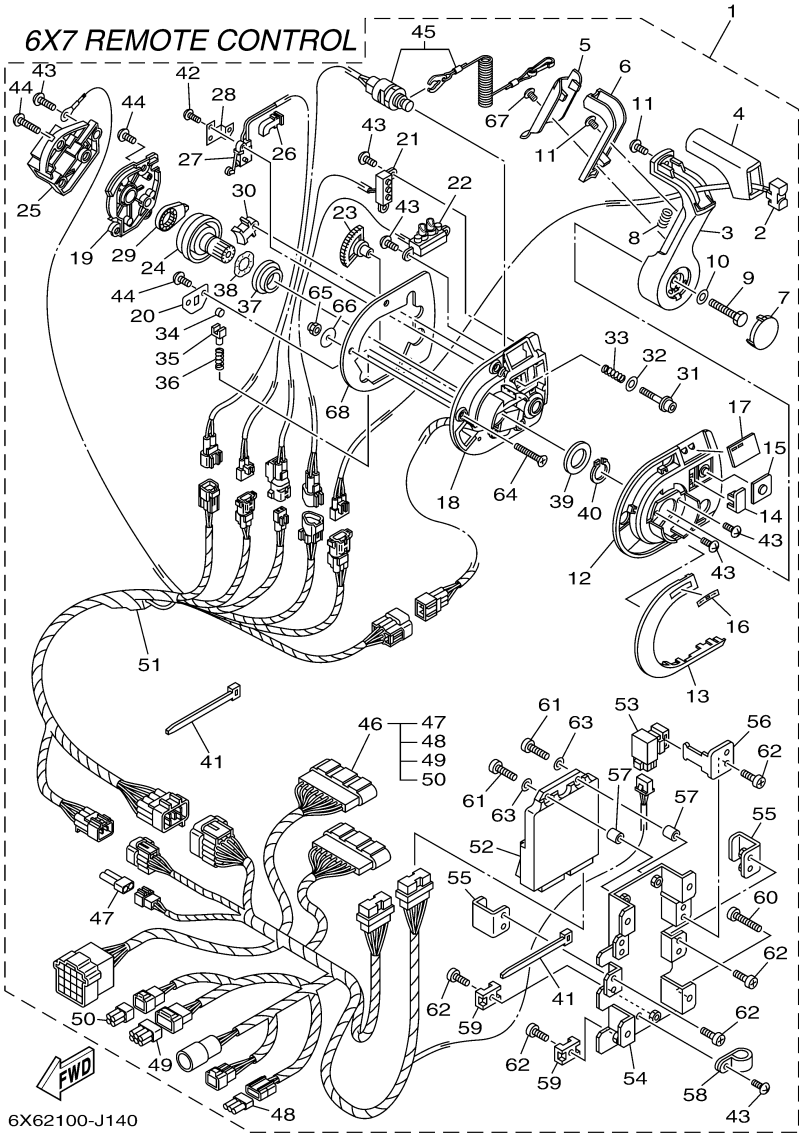
6X62100-J130

# Part List

COMMAND\_LINK\_PLUS 0310 / DEC REMOTE CONTROL HARNESS (QUAD)

REF - NO	PART NUMBER	PART NAME	QUANTITY	REMARKS
1	6X6-82590-J0-00	WIRE HARNESS ASSY	1	FOR 6X6-48209-01
1	6X6-82590-L0-00	WIRE HARNESS ASSY	1	FOR 6X6-48209-11
2	6X6-82585-20-00	.CAP 2 (2P)	2	
3	6X6-82582-60-00	.CAP 1 (6P)	2	FOR 6X6-82590-J0
4	6X6-82582-40-00	.CAP 1 (4P)	2	FOR 6X6-82590-J0
5	6X6-82582-B0-00	.CAP 1 (12P)	2	FOR 6X6-82590-J0
6	6X6-82590-K0-00	WIRE HARNESS ASSY	1	FOR 6X6-48209-01
6	6X6-82590-M0-00	WIRE HARNESS ASSY	1	FOR 6X6-48209-11
7	6X6-82585-20-00	.CAP 2 (2P)	2	
8	6X6-82582-60-00	.CAP 1 (6P)	2	FOR 6X6-82590-K0
9	6X6-82582-40-00	.CAP 1 (4P)	2	FOR 6X6-82590-K0
10	6X6-82582-B0-00	.CAP 1 (12P)	2	FOR 6X6-82590-K0
11	6X6-82570-N0-00	PANEL SWITCH ASSY	1	



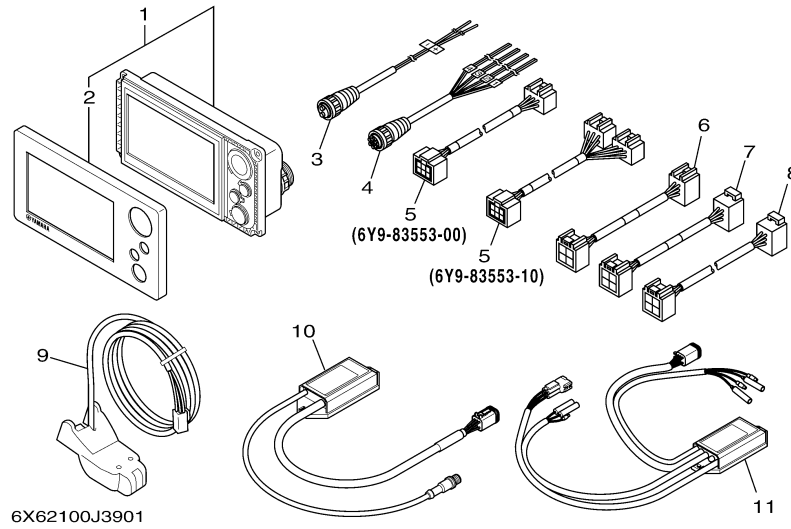
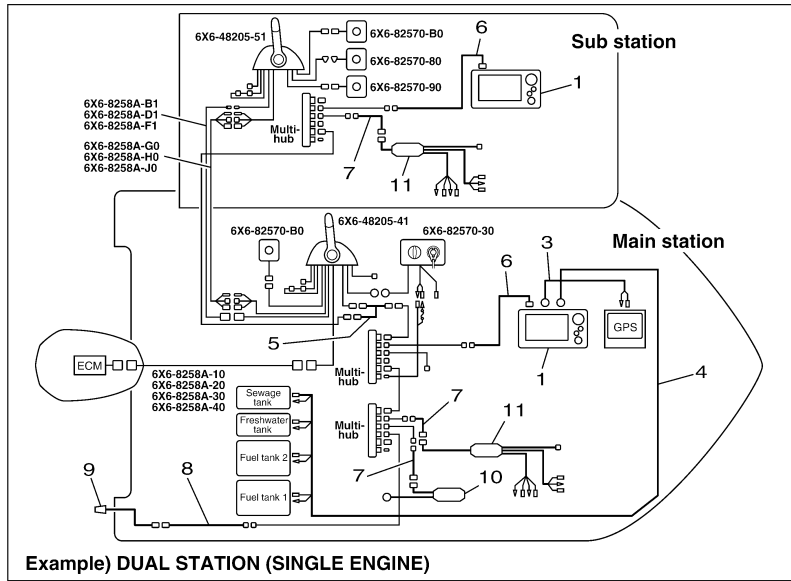


## Part List

COMMAND\_LINK\_PLUS 0310 / DEC REMOTE CONTROL (6X7 FLUSH)

REF - NO	PART NUMBER	PART NAME	QUANTITY	REMARKS
1	6X7-48206-10-00	REMOTE CONTROL ASSY	1	ORDER FROM O/B SALES
2	6X7-82563-00-00	.TRIM & TILT SWITCH ASSY	1	
3	6X7-48221-00-00	.LEVER, CONTROL	1	
4	6X7-48222-00-00	.GRIP, CONTROL LEVER	1	
5	6X7-48224-00-00	.COVER, CONTROL LEVER	1	
6	6X7-48223-00-00	.LOCK, NEUTRAL	1	
7	6X7-48224-10-00	.COVER, CONTROL LEVER	1	
8	703-48227-00-00	.SPRING, NEUTRAL LOCK	1	
9	6X6-48171-00-00	.BOLT	1	
10	92990-08600-00	.WASHER, PLATE	1	
11	6X6-48128-00-00	.SCREW 2	2	
12	6X7-48119-00-00	.COVER	1	
13	6X7-48167-10-00	.PLUG	1	
14	6X7-48167-00-00	.PLUG	1	
15	6X7-48225-00-00	.COVER	1	
16	6X7-44191-00-00	.INDICATOR, SHIFT	1	
17	6X7-48215-10-00	.GRAPHIC	1	
18	6X7-481A0-01-00	.REMO-CON CASE ASSY	1	
19	6X7-48212-00-00	.BACK PLATE 1	1	
20	6X7-48189-00-00	.RETAINER	1	
21	6X7-8259E-00-00	.SWITCH ASSY	1	
22	6X7-84301-00-00	.PILOT LIGHT ASSY 1	1	
23	6X7-48233-00-00	.GEAR 2	1	
24	6X7-48242-00-00	.SHAFT, DRIVE	1	
25	6X7-48228-00-00	.HOLDER, SWITCH	1	
26	6X7-82545-00-00	.GROMMET	1	
27	6X6-82540-00-00	.NEUTRAL SWITCH ASSY	1	
28	6X6-48245-01-00	.PLATE, LOCK	1	
29	6X6-48241-00-00	.ARM, DRIVE	1	
30	6X6-48264-00-00	.FRICTION, THROTTLE	1	
31	6X6-48267-00-00	.BOLT SET	1	
32	704-48287-00-00	.WASHER	1	
33	6X6-48158-00-00	.SPRING 1	1	
34	6X6-48236-00-00	.ROLLER, DETENT	1	
35	6X6-48237-00-00	.ADAPTOR	1	
36	6X6-48238-00-00	.SPRING, DETENT	1	
37	6X6-48234-00-00	.BUSHING 1	1	
38	703-48198-00-00	.WASHER, WAVE	1	
39	6X6-48193-00-00	.WASHER 3	1	
40	6X6-48118-00-00	.CLIP, SHIFT LEVER	1	
41	703-82591-00-00	.BAND	4	
42	6X6-8252V-00-00	.SCREW, SPECIAL	2	
43	6X7-48127-00-00	.SCREW 1	8	
44	EL8-48127-00-00	.SCREW 1	8	
45	6X7-82575-00-00	.ENGINE STOP SWITCH ASSY	1	
46	6X7-82590-40-00	.WIRE HARNESS ASSY	1	
47	6X6-82585-20-00	..CAP 2 (2P)	1	
48	6X6-82582-A0-00	..CAP 1 (3P)	1	
49	6X6-82585-60-00	..CAP 2 (6P)	1	
50	6X6-82585-40-00	..CAP 2 (4P)	1	
51	6X7-82590-20-00	.WIRE HARNESS ASSY	1	
52	6X6-85590-20-00	.CONTROL UNIT ASSY	1	

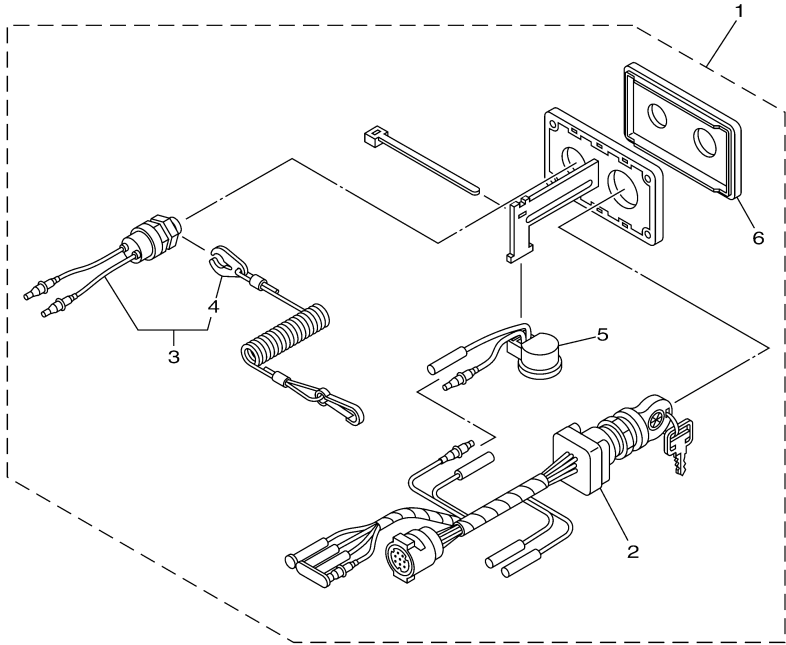
53	704-81950-10-00	.RELAY ASSY	1	
54	6X6-48211-10-00	.HOUSING,1	1	
55	6X6-85557-00-00	.HOLDER	2	
56	6X6-82591-00-00	.BAND	1	
57	6X6-8252S-00-00	.SPACER, 1	2	
58	6X6-82584-00-00	.CLAMP	1	
59	6X6-82581-00-00	.STAY, CORD CLAMP	2	
60	6X0-48128-00-00	.SCREW(M6X30)	4	
61	98580-05025-00	.SCREW, PAN HEAD	2	
62	98580-05014-00	.SCREW, PAN HEAD	8	
63	92990-05200-00	.WASHER, PLAIN	2	
64	98780-06035-00	.SCREW, FLAT HEAD	3	UR
64	97780-06230-00	.SCREW, TAPPING	3	UR
65	6X0-48156-00-00	.NUT 1	3	
66	701-48287-00-00	.WASHER	3	
67	6X7-48128-00-00	.SCREW 2	1	
68	6X7-48176-10-00	.GROMMET	1	



# Part List

COMMAND\_LINK\_PLUS 0310 / COMMAND LINK PLUS DISPLAY

REF - NO	PART NUMBER	PART NAME	QUANTITY	REMARKS
1	6Y9-83710-00-00	MULTI DISPLAY ASSY	1	UR
2	6Y9-83512-00-00	.COVER, FRONT	1	UR
3	6Y9-8356N-00-00	WIRE, LEAD	1	UR FOR GPS
4	6Y9-8356N-10-00	WIRE, LEAD	1	UR FOR TANKS
5	6Y9-83553-00-00	WIRE, LEAD	1	UR FOR 1 STATION
5	6Y9-83553-10-00	WIRE, LEAD	1	UR FOR 2 STATION
6	6Y9-83553-40-00	WIRE, LEAD	1	UR FOR MULTI DISPLAY
7	6Y9-83553-50-00	WIRE, LEAD	1	UR FOR INTERFACE UNIT
8	6Y9-83553-60-00	WIRE, LEAD	1	UR FOR SENSOR ASSY
9	6Y9-83688-00-00	SENSOR ASSY	1	UR
10	6Y9-8A2D0-00-00	INTERFACE UNIT	1	UR FOR GATEWAY
11	6Y9-8A2D0-10-00	INTERFACE UNIT	1	UR FOR ANALOGE GAUGE



6X62100J1601


## Part List

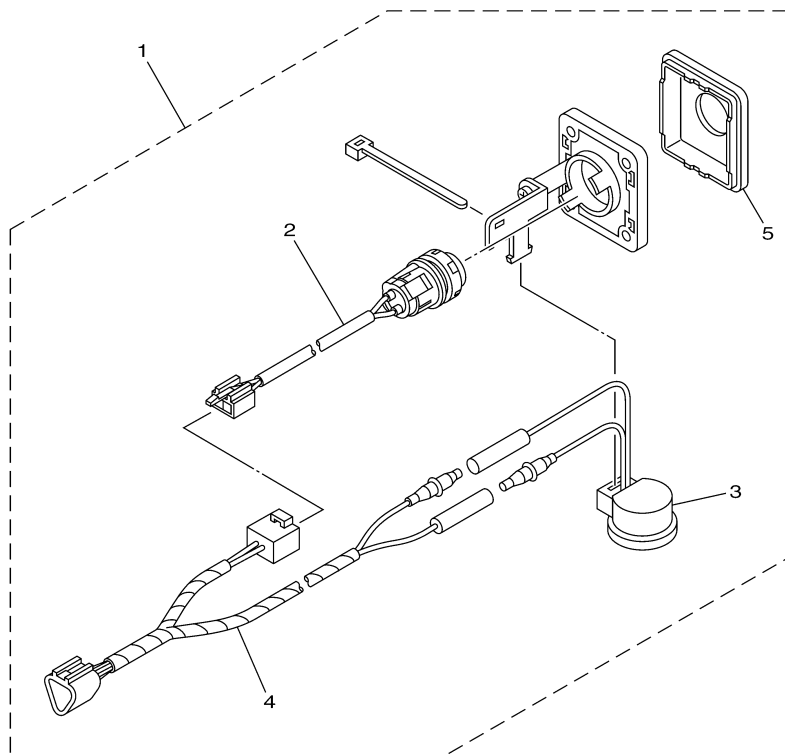
COMMAND\_LINK\_PLUS 0310 / SWITCH PANEL SINGLE (MAIN)

REF - NO	PART NUMBER	PART NAME	QUANTITY	REMARKS
1	6X6-82570-30-00	PANEL SWITCH ASSY	1	1 OR 2 STATION MAIN
2	6X6-82510-00-00	.MAIN SWITCH ASSY	1	
3	688-82575-01-00	.ENGINE STOP SWITCH ASSY	1	
4	682-82556-00-00	..LANYARD, STOP SWITCH	1	
5	703-83383-A0-00	.BUZZER	1	
6	6X6-82571-00-00	.PANEL, SWITCH	1	

## Part Notes

COMMAND\_LINK\_PLUS 0310 / SWITCH PANEL SINGLE (MAIN)

PART NUMBER	NOTE TEXT
682-82556-00-00 	OEM: This part number is among the Top 100 Most Popular Marine Maintenance Parts as of February 2013.



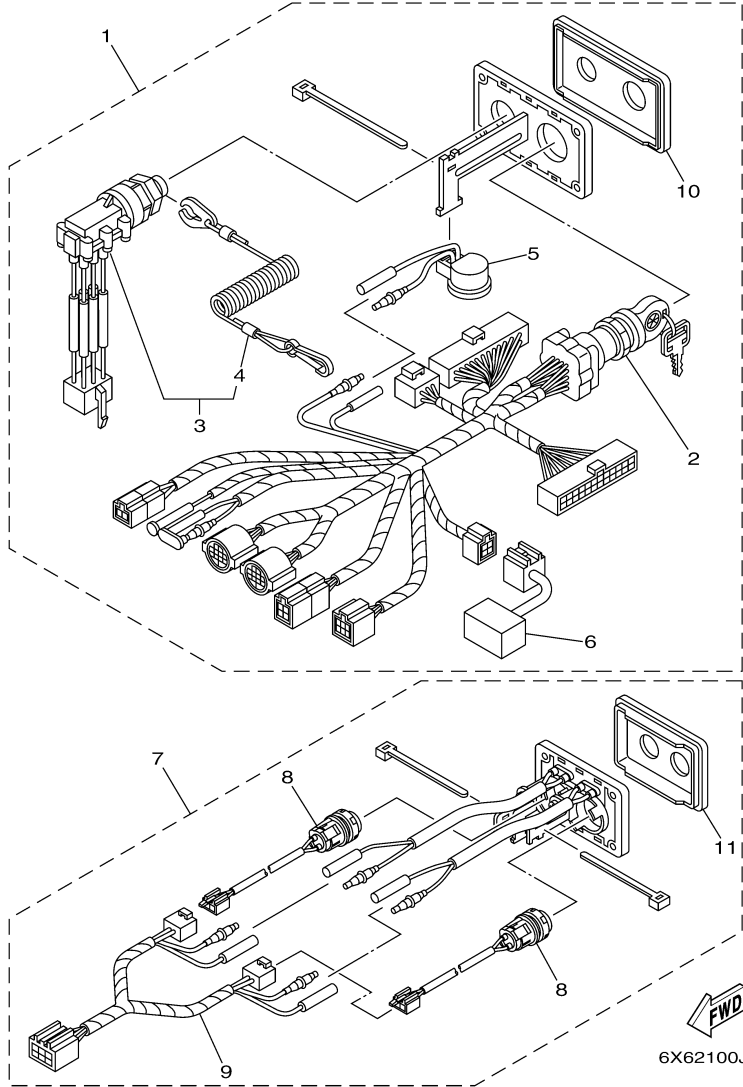
6X62100J1701



# Part List

COMMAND\_LINK\_PLUS 0310 / SWITCH PANEL SINGLE (2ND HELM)

REF - NO	PART NUMBER	PART NAME	QUANTITY	REMARKS
1	6X6-82570-80-00	PANEL SWITCH ASSY	1	2 STATION 2ND HELM
2	6X6-8259E-20-00	.SWITCH ASSY	1	
3	703-83383-A0-00	.BUZZER	1	
4	6X6-82716-20-00	.CORD SWITCH	1	
5	6X6-82571-40-00	.PANEL, SWITCH	1	



6X62100J1901


## Part List

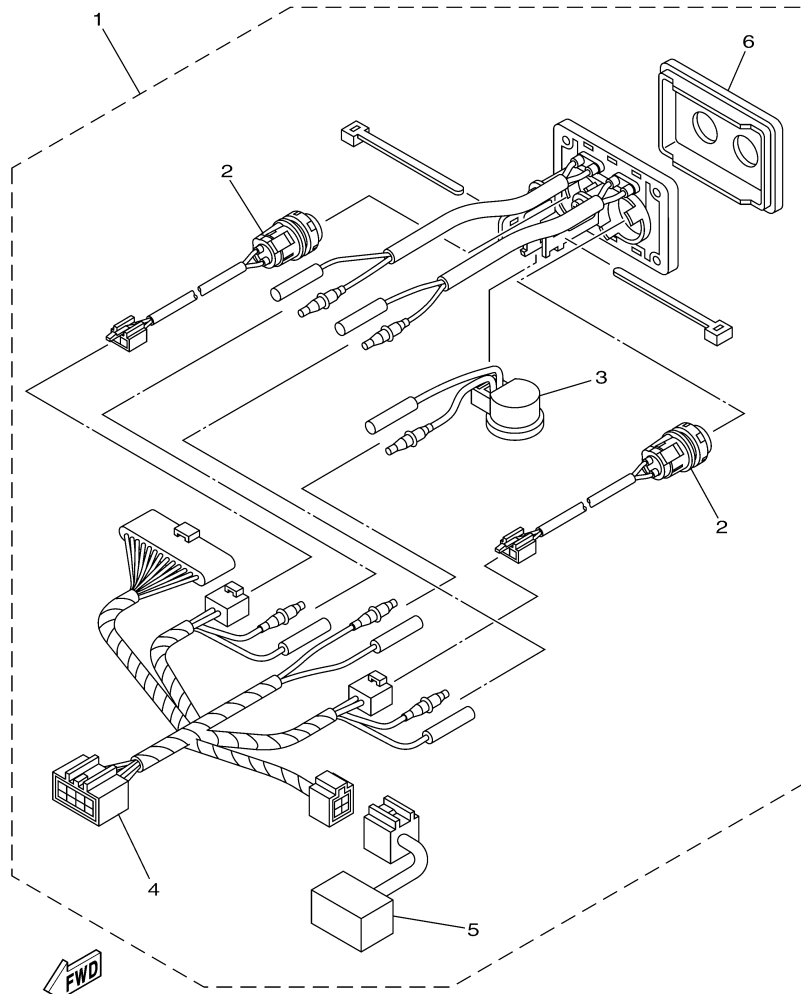
COMMAND\_LINK\_PLUS 0310 / SWITCH PANEL TWIN (MAIN)

REF - NO	PART NUMBER	PART NAME	QUANTITY	REMARKS
1	6X6-82570-40-00	PANEL SWITCH ASSY	1	1 OR 2 STATION MAIN
2	6X6-82510-10-00	.MAIN SWITCH ASSY	1	
3	6X6-82575-10-00	.ENGINE STOP SWITCH ASSY	1	
4	682-82556-00-00	..LANYARD, STOP SWITCH	1	
5	703-83383-A0-00	.BUZZER	1	
6	6X6-81980-00-00	.DIODE ASSY	1	
7	6X6-82570-60-00	PANEL SWITCH ASSY	1	1 OR 2 STATION MAIN
8	6X6-8259E-20-00	.SWITCH ASSY	2	
9	6X6-82716-00-00	.CORD SWITCH	1	
10	6X6-82571-10-00	.PANEL, SWITCH	1	
11	6X6-82571-20-00	.PANEL, SWITCH	1	

## Part Notes

COMMAND\_LINK\_PLUS 0310 / SWITCH PANEL TWIN (MAIN)

PART NUMBER	NOTE TEXT
682-82556-00-00 	OEM: This part number is among the Top 100 Most Popular Marine Maintenance Parts as of February 2013.

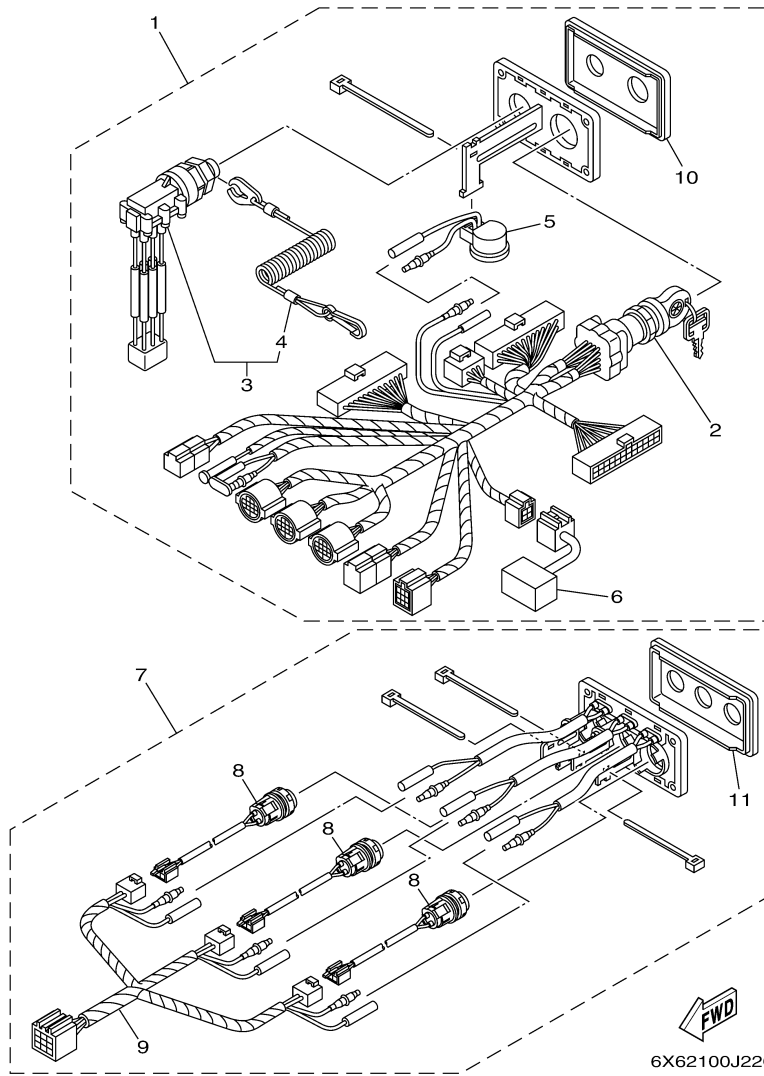


  
6X62100J2001

# Part List

COMMAND\_LINK\_PLUS 0310 / SWITCH PANEL TWIN (2ND HELM)

REF - NO	PART NUMBER	PART NAME	QUANTITY	REMARKS
1	6X6-82570-E0-00	PANEL SWITCH ASSY	1	2 STATION 2ND HELM
2	6X6-8259E-20-00	.SWITCH ASSY	2	
3	703-83383-A0-00	.BUZZER	1	
4	6X6-82716-40-00	.CORD SWITCH	1	
5	6X6-81980-00-00	.DIODE ASSY	1	
6	6X6-82571-20-00	.PANEL, SWITCH	1	



6X62100J2201


## Part List

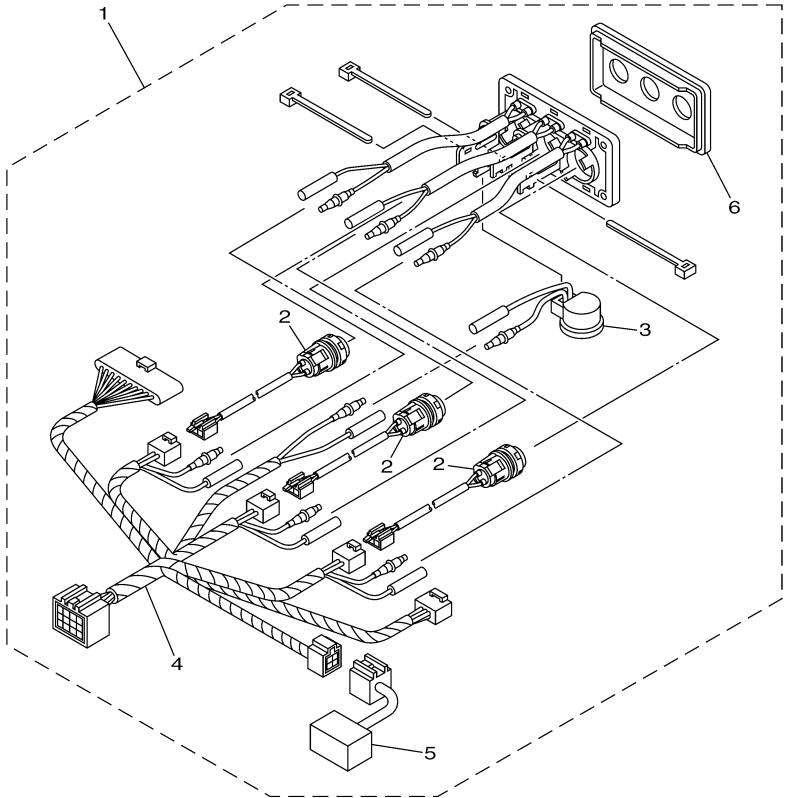
COMMAND\_LINK\_PLUS 0310 / SWITCH PANEL TRIPLE (MAIN)

REF - NO	PART NUMBER	PART NAME	QUANTITY	REMARKS
1	6X6-82570-50-00	PANEL SWITCH ASSY	1	1 OR 2 STATION MAIN
2	6X6-82510-20-00	.MAIN SWITCH ASSY	1	
3	6X6-82575-10-00	.ENGINE STOP SWITCH ASSY	1	
4	682-82556-00-00	..LANYARD, STOP SWITCH	1	
5	703-83383-A0-00	.BUZZER	1	
6	6X6-81980-00-00	.DIODE ASSY	1	
7	6X6-82570-70-00	PANEL SWITCH ASSY	1	1 OR 2 STATION MAIN
8	6X6-8259E-20-00	.SWITCH ASSY	3	
9	6X6-82716-10-00	.CORD SWITCH	1	
10	6X6-82571-10-00	.PANEL, SWITCH	1	
11	6X6-82571-30-00	.PANEL, SWITCH	1	

## Part Notes

COMMAND\_LINK\_PLUS 0310 / SWITCH PANEL TRIPLE (MAIN)

PART NUMBER	NOTE TEXT
682-82556-00-00 	OEM: This part number is among the Top 100 Most Popular Marine Maintenance Parts as of February 2013.



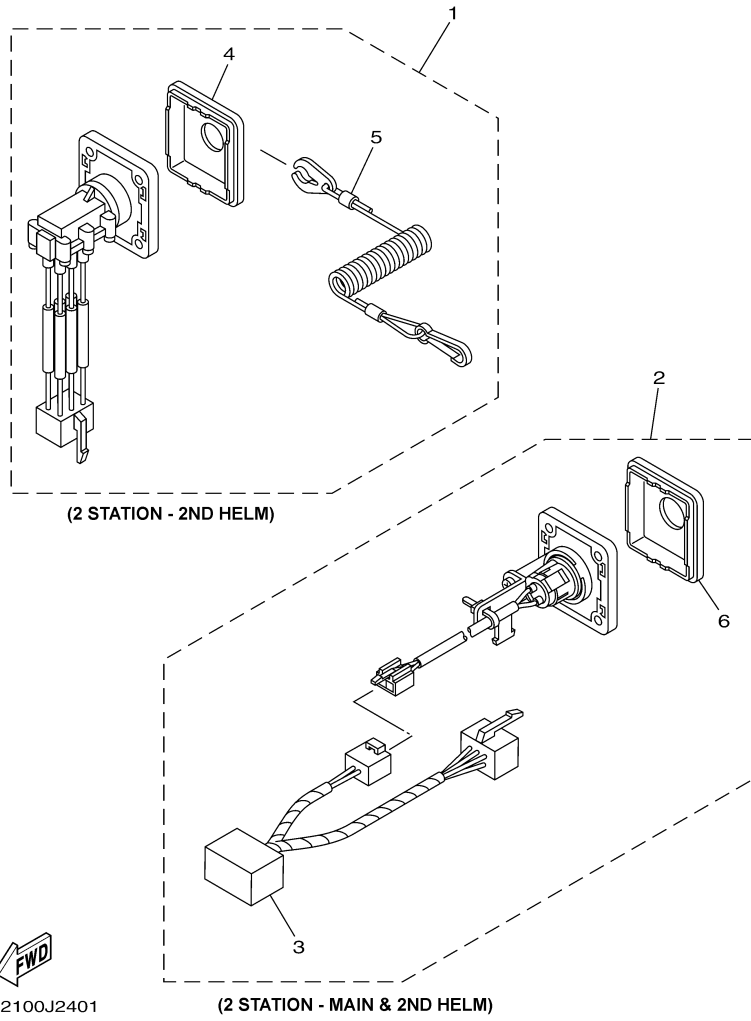
6X62100J2301



# Part List

COMMAND\_LINK\_PLUS 0310 / SWITCH PANEL TRIPLE (2ND HELM)

REF - NO	PART NUMBER	PART NAME	QUANTITY	REMARKS
1	6X6-82570-F0-00	PANEL SWITCH ASSY	1	2 STATION 2ND HELM
2	6X6-8259E-20-00	.SWITCH ASSY	3	
3	703-83383-A0-00	.BUZZER	1	
4	6X6-82716-50-00	.CORD SWITCH	1	
5	6X6-81980-00-00	.DIODE ASSY	1	
6	6X6-82571-30-00	.PANEL, SWITCH	1	




## Part List

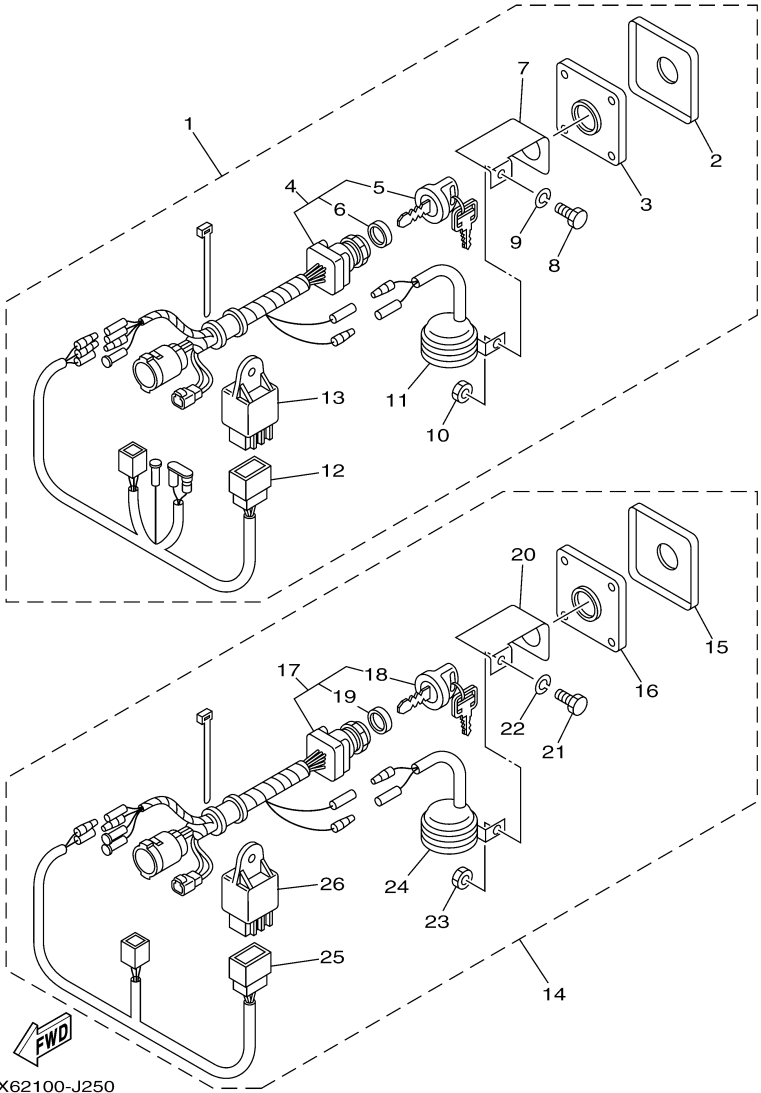
COMMAND\_LINK\_PLUS 0310 / SWTCH PNL STATION SELECT (MAIN & 2ND HELM)

REF - NO	PART NUMBER	PART NAME	QUANTITY	REMARKS
1	6X6-82570-90-00	PANEL SWITCH ASSY	1	2 STATION 2ND HELM
2	6X6-82570-B0-00	PANEL SWITCH ASSY	2	2 STATION MAIN & 2ND HELM
3	6X6-81980-10-00	.DIODE ASSY	1	
4	6X6-82571-50-00	.PANEL, SWITCH	1	
5	682-82556-00-00	.LANYARD, STOP SWITCH	1	
6	6X6-82571070-00	.PANEL, SWITCH	1	

## Part Notes

COMMAND\_LINK\_PLUS 0310 / SWTCH PNL STATION SELECT (MAIN & 2ND HELM)

PART NUMBER	NOTE TEXT
682-82556-00-00 	OEM: This part number is among the Top 100 Most Popular Marine Maintenance Parts as of February 2013.

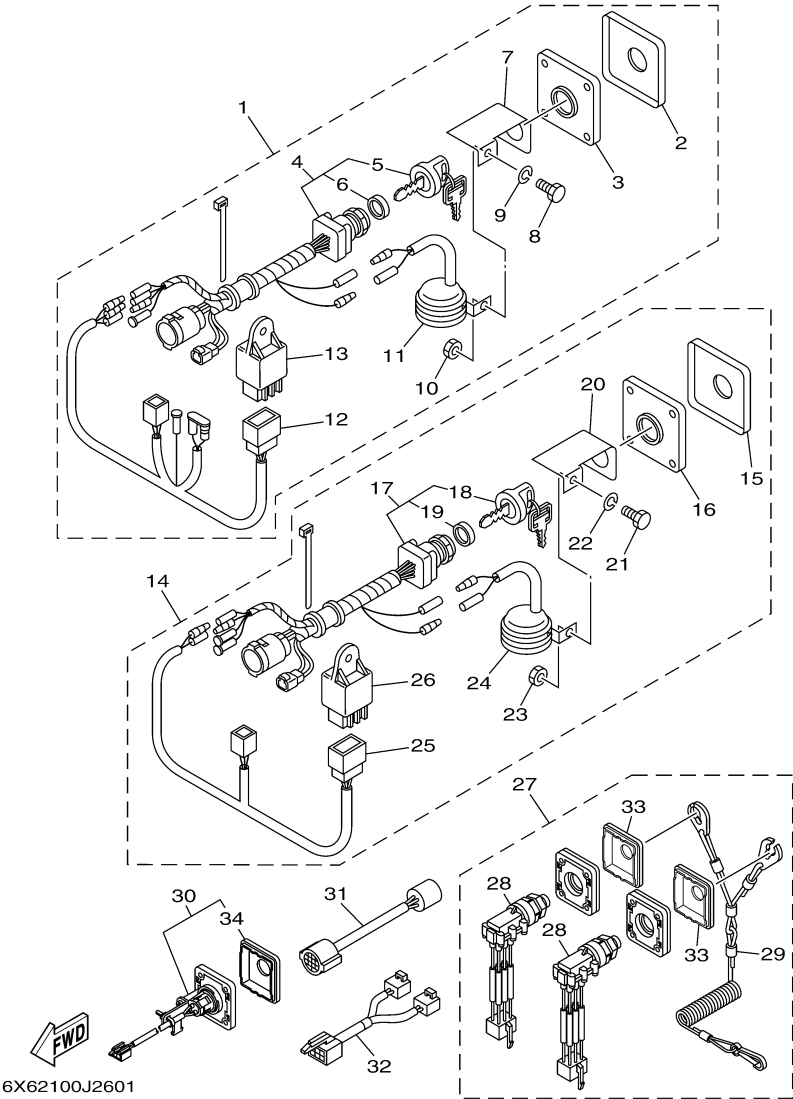


6X62100-J250

## Part List

COMMAND\_LINK\_PLUS 0310 / SWITCH PANEL QUAD (MAIN PORT)

REF - NO	PART NUMBER	PART NAME	QUANTITY	REMARKS
1	6X6-82570-R0-00	PANEL SWITCH ASSY (FOR PORT)	1	1 OR 2 STATION MAIN
2	64D-82571-00-00	.PANEL, SWITCH	1	
3	64D-82588-00-00	.PLATE	1	
4	64D-82510-20-00	.MAIN SWITCH ASSY	1	
5	703-82577-00-00	..CAP, KEY	1	
6	6K1-82532-00-00	..CAP	1	
7	64D-82581-00-00	.STAY, CORD CLAMP	1	
8	97095-05012-00	.BOLT	1	
9	92903-05100-00	.WASHER, SPRING	1	
10	95303-05700-00	.NUT	1	
11	688-83383-11-00	.BUZZER	1	
12	6X6-82507-00-00	.WIRE, LEAD	1	
13	68V-81950-00-00	.RELAY ASSY	1	
14	6X6-82570-S0-00	PANEL SWITCH ASSY (FOR C-PORT)	1	1 OR 2 STATION MAIN
15	64D-82571-00-00	.PANEL, SWITCH	1	
16	64D-82588-00-00	.PLATE	1	
17	64D-82510-20-00	.MAIN SWITCH ASSY	1	
18	703-82577-00-00	..CAP, KEY	1	
19	6K1-82532-00-00	..CAP	1	
20	64D-82581-00-00	.STAY, CORD CLAMP	1	
21	97095-05012-00	.BOLT	1	
22	92903-05100-00	.WASHER, SPRING	1	
23	95303-05700-00	.NUT	1	
24	688-83383-11-00	.BUZZER	1	
25	6X6-82507-10-00	.WIRE, LEAD	1	
26	68V-81950-00-00	.RELAY ASSY	1	

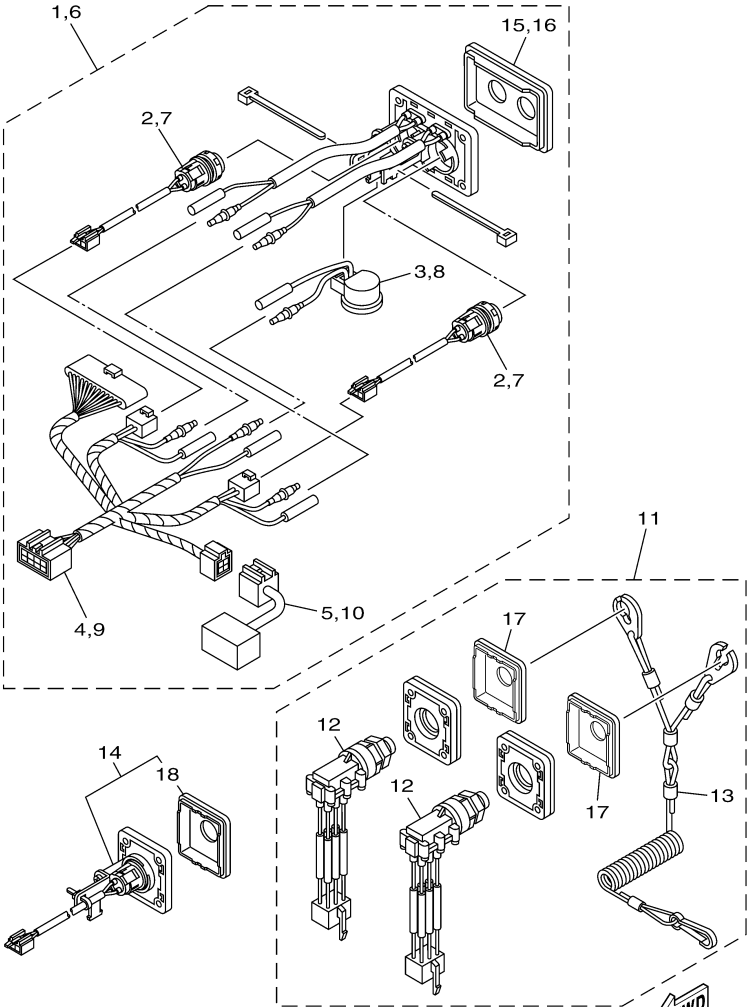


6X62100J2601

## Part List

COMMAND\_LINK\_PLUS 0310 / SWITCH PANEL QUAD (MAIN STBD)

REF - NO	PART NUMBER	PART NAME	QUANTITY	REMARKS
1	6X6-82570-T0-00	PANEL SWITCH ASSY (FOR C-STBD)	1	1 OR 2 STATION MAIN
2	64D-82571-00-00	.PANEL, SWITCH	1	
3	64D-82588-00-00	.PLATE	1	
4	64D-82510-20-00	.MAIN SWITCH ASSY	1	
5	703-82577-00-00	..CAP, KEY	1	
6	6K1-82532-00-00	...CAP	1	
7	64D-82581-00-00	.STAY, CORD CLAMP	1	
8	97095-05012-00	.BOLT	1	
9	92903-05100-00	.WASHER, SPRING	1	
10	95303-05700-00	.NUT	1	
11	688-83383-11-00	.BUZZER	1	
12	6X6-82507-20-00	.WIRE, LEAD	1	
13	68V-81950-00-00	.RELAY ASSY	1	
14	6X6-82570-U0-00	PANEL SWITCH ASSY (FOR STBD)	1	1 OR 2 STATION MAIN
15	64D-82571-00-00	.PANEL, SWITCH	1	
16	64D-82588-00-00	.PLATE	1	
17	64D-82510-20-00	.MAIN SWITCH ASSY	1	
18	703-82577-00-00	..CAP, KEY	1	
19	6K1-82532-00-00	..CAP	1	
20	64D-82581-00-00	.STAY, CORD CLAMP	1	
21	97095-05012-00	.BOLT	1	
22	92903-05100-00	.WASHER, SPRING	1	
23	95303-05700-00	.NUT	1	
24	688-83383-11-00	.BUZZER	1	
25	6X6-82507-30-00	.WIRE, LEAD	1	
26	68V-81950-00-00	.RELAY ASSY	1	
27	6X6-82570-V0-00	PANEL SWITCH ASSY	1	2 STATION MAIN & 2ND HELM
28	6X6-82575-30-00	.ENGINE STOP SWITCH ASSY	2	
29	6X6-82556-00-00	.LANYARD, STOP SWITCH	1	
30	6X6-82570-L0-00	PANEL SWITCH ASSY	1	2 STATION MAIN & 2ND HELM
31	6X6-8258A-L0-00	EXTENSION, WIRE HARNESS	4	
32	6X6-8258A-U0-00	EXTENSION, WIRE HARNESS	2	
33	6X6-82571-50-00	.PANEL, SWITCH	2	
34	6X6-82571-70-00	.PANEL, SWITCH	1	



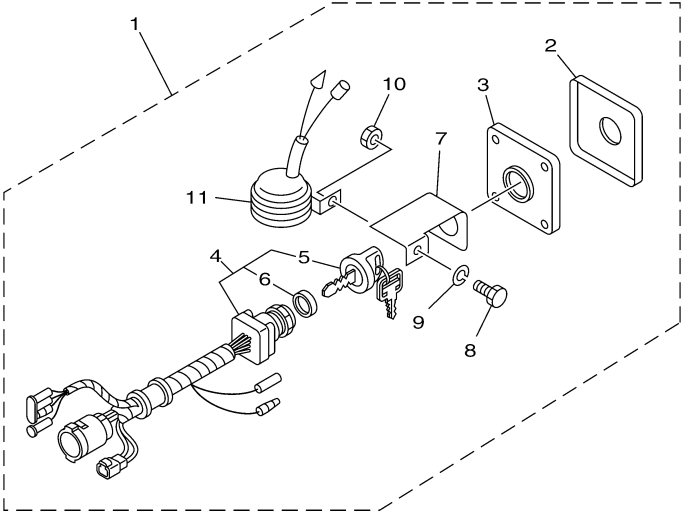
6X62100J2701



## Part List

COMMAND\_LINK\_PLUS 0310 / SWITCH PANEL QUAD (2ND HELM PORT &amp; STBD)

REF - NO	PART NUMBER	PART NAME	QUANTITY	REMARKS
1	6X6-82570-J0-00	PANEL SWITCH ASSY (PORT- P/CP)	1	2 STATION 2ND HELM
2	6X6-8259E-20-00	.SWITCH ASSY	2	
3	703-83383-A0-00	.BUZZER	1	
4	6X6-82716-40-00	.CORD SWITCH	1	
5	6X6-81980-00-00	.DIODE ASSY	1	
6	6X6-82570-K0-00	PANEL SWITCH ASSY (STBD- CS/S)	1	2 STATION 2ND HELM
7	6X6-8259E-20-00	.SWITCH ASSY	2	
8	703-83383-A0-00	.BUZZER	1	
9	6X6-82716-40-00	.CORD SWITCH	1	
10	6X6-81980-00-00	.DIODE ASSY	1	
11	6X6-82570-V0-00	PANEL SWITCH ASSY	1	2 STATION MAIN & 2ND HELM
12	6X6-82575-30-00	.ENGINE STOP SWITCH ASSY	2	
13	6X6-82556-00-00	.LANYARD, STOP SWITCH	1	
14	6X6-82570-L0-00	PANEL SWITCH ASSY	1	2 STATION MAIN & 2ND HELM
15	6X6-82571-80-00	.PANEL, SWITCH	1	
16	6X6-82571-90-00	.PANEL, SWITCH	1	
17	6X6-82571-50-00	.PANEL, SWITCH	1	
18	6X6-82571-70-00	.PANEL, SWITCH	1	



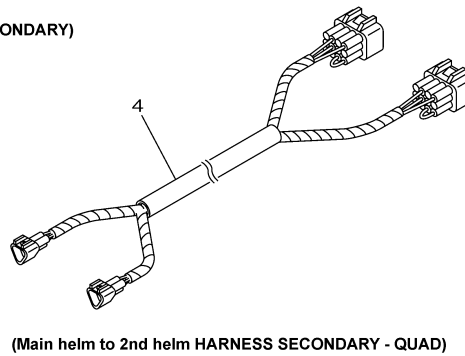
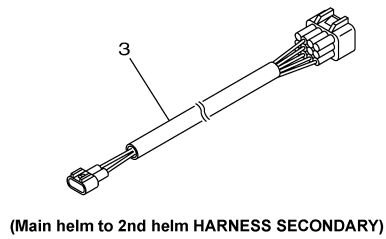
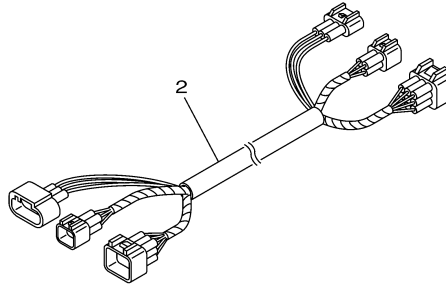
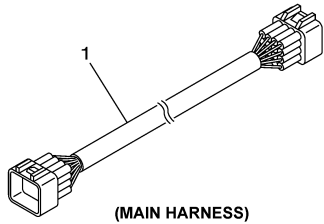
6X62100-J280

# Part List

COMMAND\_LINK\_PLUS 0310 / SWITCH PANEL (6X7 FLUSH)

REF - NO	PART NUMBER	PART NAME	QUANTITY	REMARKS
1	64D-82570-20-00	PANEL SWITCH ASSY	1	
2	64D-82571-00-00	.PANEL, SWITCH	1	
3	64D-82588-00-00	.PLATE	1	
4	64D-82510-20-00	.MAIN SWITCH ASSY	1	
5	703-82577-00-00	..CAP, KEY	1	
6	6K1-82532-00-00	..CAP	1	
7	64D-82581-00-00	.STAY, CORD CLAMP	1	
8	97303-05012-00	.BOLT	1	
9	92903-05100-00	.WASHER, SPRING	1	
10	95303-05700-00	.NUT	1	
11	688-83383-11-00	.BUZZER	1	

## DIGITAL ELECTRONIC REMOTE CONTROL WIRE HARNESS



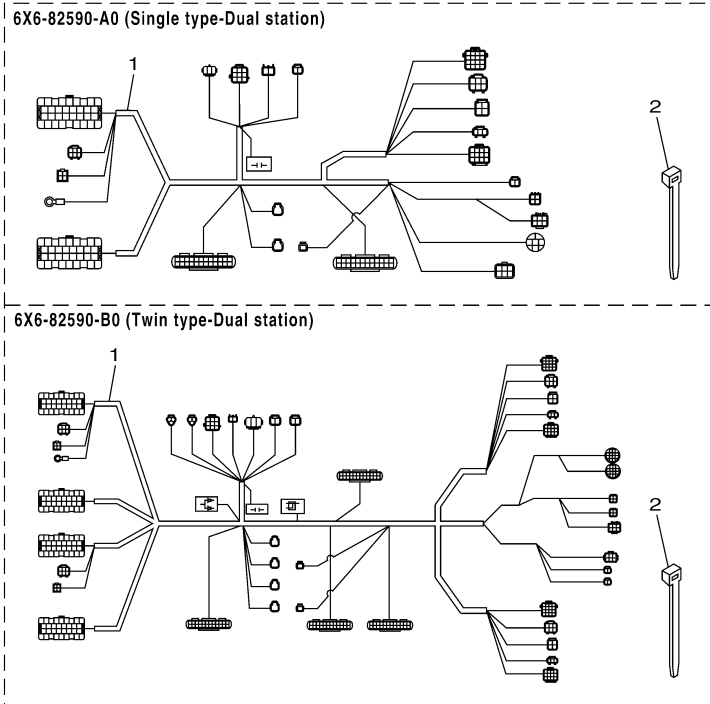
6X62100-J290

## Part List

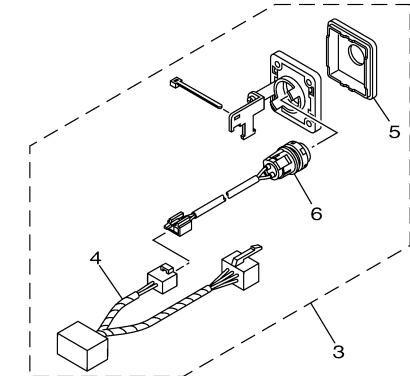
COMMAND\_LINK\_PLUS 0310 / DEC ELECTRICAL 1

REF - NO	PART NUMBER	PART NAME	QUANTITY	REMARKS
1	6X6-8258A-10-00	EXTENSION, WIRE HARNESS (7M)	1	UR FOR SINGLE
1	6X6-8258A-00-00	EXTENSION, WIRE HARNESS (6.1M)	4	UR FOR QUAD
1	6X6-8258A-10-00	EXTENSION, WIRE HARNESS (7M)	3	UR FOR TRIPLE
1	6X6-8258A-10-00	EXTENSION, WIRE HARNESS (7M)	4	UR FOR QUAD
1	6X6-8258A-20-00	EXTENSION, WIRE HARNESS (8M)	1	UR FOR SINGLE
1	6X6-8258A-20-00	EXTENSION, WIRE HARNESS (8M)	2	UR FOR TWIN
1	6X6-8258A-20-00	EXTENSION, WIRE HARNESS (8M)	3	UR FOR TRIPLE
1	6X6-8258A-20-00	EXTENSION, WIRE HARNESS (8M)	4	UR FOR QUAD
1	6X6-8258A-30-00	EXTENSION, WIRE HARNESS (10M)	1	UR FOR SINGLE
1	6X6-8258A-30-00	EXTENSION, WIRE HARNESS (10M)	2	UR FOR TWIN
1	6X6-8258A-30-00	EXTENSION, WIRE HARNESS (10M)	3	UR FOR TRIPLE
1	6X6-8258A-30-00	EXTENSION, WIRE HARNESS (10M)	4	UR FOR QUAD
1	6X6-8258A-40-00	EXTENSION, WIRE HARNESS (12M)	1	UR FOR SINGLE
1	6X6-8258A-40-00	EXTENSION, WIRE HARNESS (12M)	2	UR FOR TWIN
1	6X6-8258A-40-00	EXTENSION, WIRE HARNESS (12M)	3	UR FOR TRIPLE
1	6X6-8258A-40-00	EXTENSION, WIRE HARNESS (12M)	4	UR FOR QUAD
1	6X6-8258A-00-00	EXTENSION, WIRE HARNESS (6.1M)	1	UR FOR SINGLE
1	6X6-8258A-00-00	EXTENSION, WIRE HARNESS (6.1M)	2	UR FOR TWIN
1	6X6-8258A-00-00	EXTENSION, WIRE HARNESS (6.1M)	3	UR FOR TRIPLE
1	6X6-8258A-10-00	EXTENSION, WIRE HARNESS (7M)	2	UR FOR TWIN
2	6X6-8258A-G0-00	EXTENSION, WIRE HARNESS (5M)	1	UR FOR SINGLE
2	6X6-8258A-G0-00	EXTENSION, WIRE HARNESS (5M)	2	UR FOR TWIN
2	6X6-8258A-J0-00	EXTENSION, WIRE HARNESS: 12.2M	4	UR FOR QUAD
2	6X6-8258A-J0-00	EXTENSION, WIRE HARNESS: 12.2M	3	UR FOR TRIPLE
2	6X6-8258A-J0-00	EXTENSION, WIRE HARNESS: 12.2M	2	UR FOR TWIN
2	6X6-8258A-J0-00	EXTENSION, WIRE HARNESS: 12.2M	1	UR FOR SINGLE
2	6X6-8258A-H0-00	EXTENSION, WIRE HARNESS (8M)	4	UR FOR QUAD
2	6X6-8258A-H0-00	EXTENSION, WIRE HARNESS (8M)	3	UR FOR TRIPLE
2	6X6-8258A-H0-00	EXTENSION, WIRE HARNESS (8M)	2	UR FOR TWIN
2	6X6-8258A-H0-00	EXTENSION, WIRE HARNESS (8M)	1	UR FOR SINGLE
2	6X6-8258A-G0-00	EXTENSION, WIRE HARNESS (5M)	4	UR FOR QUAD
2	6X6-8258A-G0-00	EXTENSION, WIRE HARNESS	3	UR FOR TRIPLE

		(5M)		
3	6X6-8258A-B1-00	EXTENSION, WIRE HARNESS (5M)	1	UR FOR SINGLE
3	6X6-8258A-F1-00	EXTENSION, WIRE HARNESS: 12.2M	1	UR FOR SINGLE
3	6X6-8258A-B1-00	EXTENSION, WIRE HARNESS (5M)	2	UR FOR TWIN,QUAD
3	6X6-8258A-B1-00	EXTENSION, WIRE HARNESS (5M)	3	UR FOR TRIPLE
3	6X6-8258A-F1-00	EXTENSION, WIRE HARNESS: 12.2M	3	UR FOR TRIPLE
3	6X6-8258A-F1-00	EXTENSION, WIRE HARNESS: 12.2M	2	UR FOR TWIN,QUAD
3	6X6-8258A-D1-00	EXTENSION, WIRE HARNESS (8M)	3	UR FOR TRIPLE
3	6X6-8258A-D1-00	EXTENSION, WIRE HARNESS (8M)	2	UR FOR TWIN,QUAD
3	6X6-8258A-D1-00	EXTENSION, WIRE HARNESS (8M)	1	UR FOR SINGLE
4	6X6-8258A-T0-00	EXTENSION, WIRE HARNESS: 12.2M	1	UR FOR QUAD
4	6X6-8258A-R0-00	EXTENSION, WIRE HARNESS (5M)	1	UR FOR QUAD
4	6X6-8258A-S0-00	EXTENSION, WIRE HARNESS (8M)	1	UR FOR QUAD



6X62100J3001



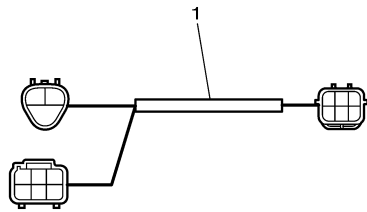
Starts the engines from PORT to STBD continuously.  
(All engine)

# Part List

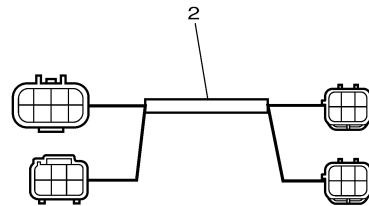
COMMAND\_LINK\_PLUS 0310 / DEC ELECTRICAL 2

REF - NO	PART NUMBER	PART NAME	QUANTITY	REMARKS
1	6X6-82590-A0-00	WIRE HARNESS ASSY	1	UR FOR SINGLE
1	6X6-82590-B0-00	WIRE HARNESS ASSY	1	UR FOR TWIN
2	703-82591-00-00	.BAND	4	UR FOR SINGLE
2	703-82591-00-00	.BAND	8	UR FOR TWIN
3	6X6-82570-C0-00	PANEL SWITCH ASSY	1	UR FOR TWIN,TRIPLE
4	6X6-81980-20-00	.DIODE ASSY	1	
5	6X6-82571-60-00	.PANEL, SWITCH	1	
6	6X6-8259E-20-00	.SWITCH ASSY	1	

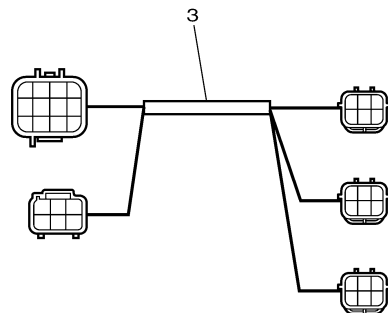




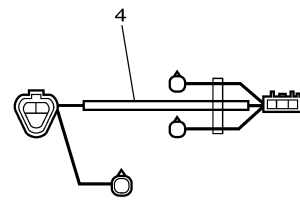
(2nd Station ADAPTER HARNESS for Command Link Single Switch Panel to Command Link Plus Remote Control)



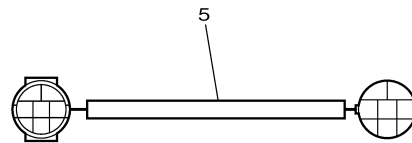
(2nd Station ADAPTER HARNESS for Command Link Twin Switch Panel to Command Link Plus Remote Control)



(2nd Station ADAPTER HARNESS for Command Link Triple Switch Panel to Command Link Plus Remote Control)



(ADAPTER HARNESS for Main Harness from Main Station Command Link Plus Remote Control to 2nd Station Command Link Remote Control)



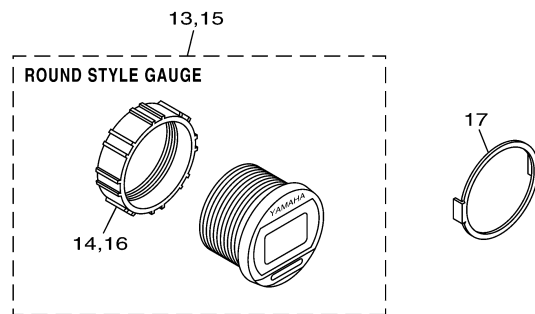
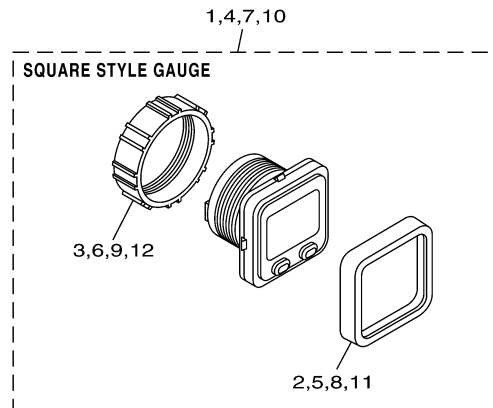
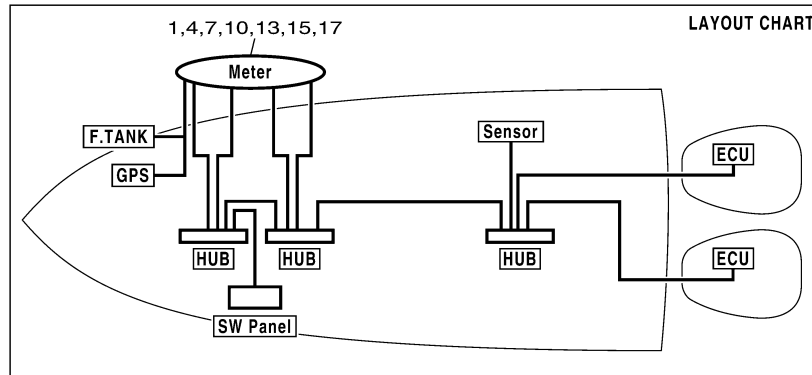
(6X7 Flush Control EXTENSION HARNESS)

6X62100-J310

# Part List

COMMAND\_LINK\_PLUS 0310 / DEC ELECTRICAL 3

REF - NO	PART NUMBER	PART NAME	QUANTITY	REMARKS
1	6X6-8258A-M0-00	EXTENSION, WIRE HARNESS	1	UR FOR SINGLE 2ND HELM
2	6X6-8258A-N0-00	EXTENSION, WIRE HARNESS	1	UR FOR TWIN 2ND HELM
3	6X6-8258A-P0-00	EXTENSION, WIRE HARNESS	1	UR FOR TRIPLE 2ND HELM
4	6X6-8258A-K0-00	EXTENSION, WIRE HARNESS	1	UR FOR SINGLE MAIN
4	6X6-8258A-K0-00	EXTENSION, WIRE HARNESS	2	UR FOR TWIN MAIN
4	6X6-8258A-K0-00	EXTENSION, WIRE HARNESS	3	UR FOR TRIPLE MAIN
5	6X7-82590-30-00	WIRE HARNESS ASSY	1	UR FOR 6X7 RC

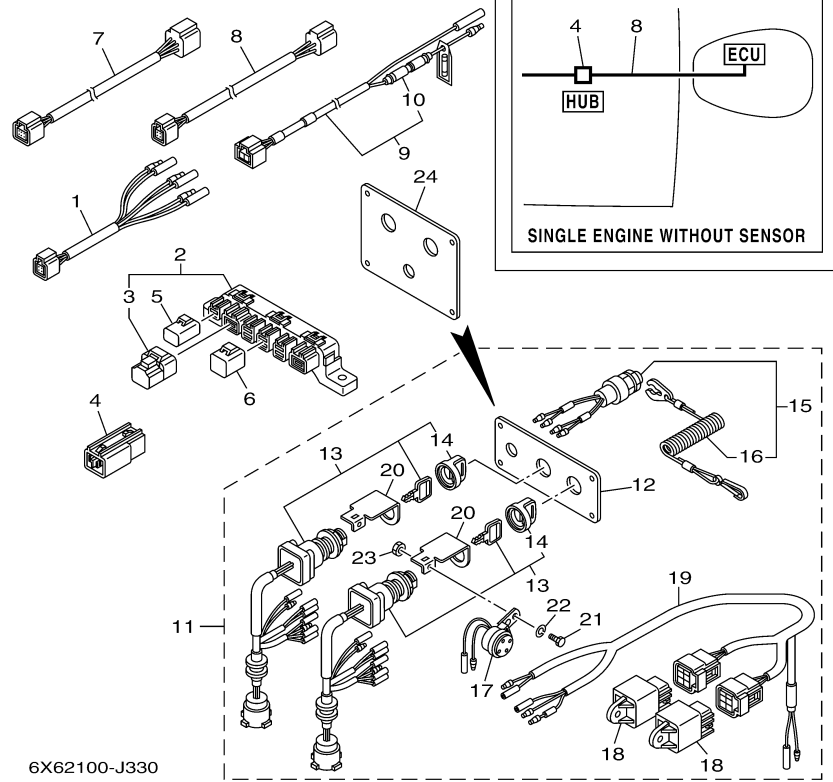
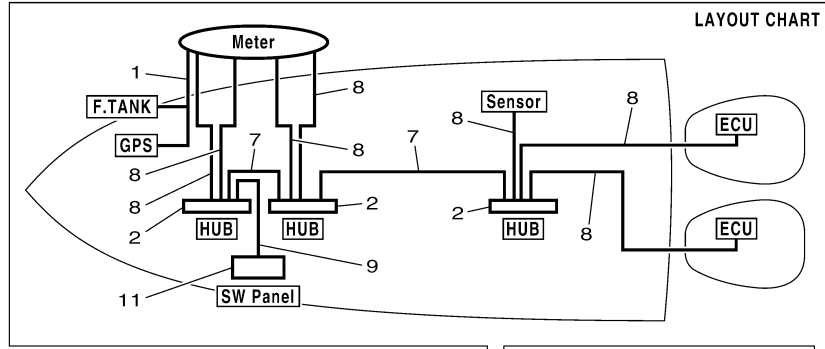


6011100-G880

## Part List

COMMAND\_LINK\_PLUS 0310 / COMMAND LINK INSTRUMENTS

REF - NO	PART NUMBER	PART NAME	QUANTITY	REMARKS
1	6Y8-8350T-01-00	TACHOMETER, SQ	1	
2	6Y8-83363-00-00	.BEZEL, SQUARE	1	
3	6Y8-84383-00-00	.NUT, RING	1	
4	6Y8-8350S-01-00	SPEEDOMETER, SQ	1	
5	6Y8-83363-00-00	.BEZEL, SQUARE	1	
6	6Y8-84383-00-00	.NUT, RING	1	
7	6Y8-8350F-01-00	FL MGT METER, SQ	1	FUEL MANAGEMENT
8	6Y8-83363-00-00	.BEZEL, SQUARE	1	
9	6Y8-84383-00-00	.NUT, RING	1	
10	6Y8-83500-01-00	S&FM METER, SQ	1	SPEED & FUEL
11	6Y8-83363-00-00	.BEZEL, SQUARE	1	
12	6Y8-84383-00-00	.NUT, RING	1	
13	6Y8-8350T-11-00	TACHOMETER, RD	1	
14	6Y8-84383-00-00	.NUT, RING	1	
15	6Y8-83500-11-00	S&FM METER, RD	1	SPEED & FUEL
16	6Y8-84383-00-00	.NUT, RING	1	
17	6Y8-83514-00-00	PLATE, FITTING	1	UR



6X62100-J330


# Part List

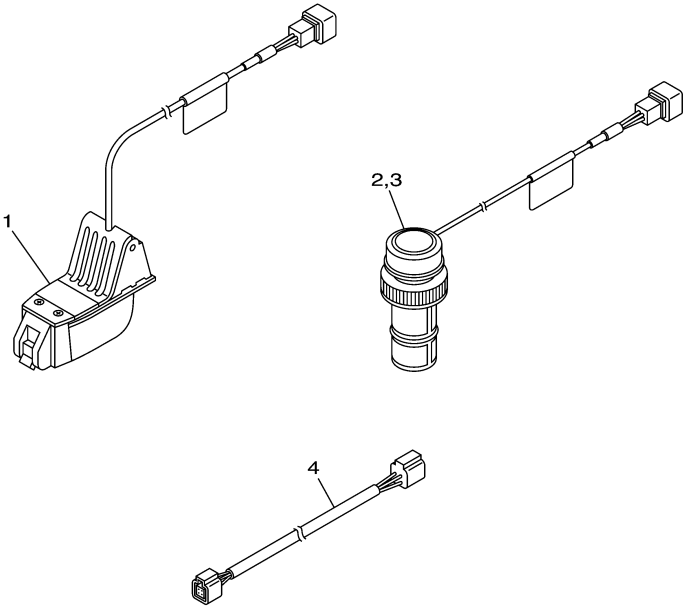
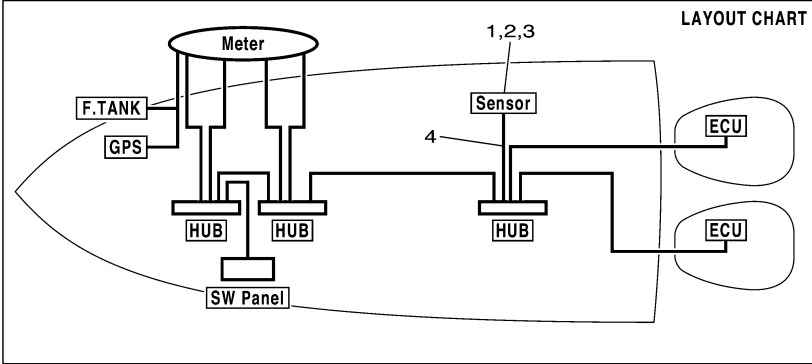
COMMAND\_LINK\_PLUS 0310 / COMMAND LINK ELECTRICAL 1

REF - NO	PART NUMBER	PART NAME	QUANTITY	REMARKS
1	6Y8-8356N-01-00	LEAD, FUEL TANK & GPS SENDER	1	
2	6Y8-81920-01-00	MULTI HUB ASSY	1	UR
3	6Y8-85371-01-00	.END OF LINE RESISTER	1	
4	6Y8-81920-11-00	IN-LINE HUB ASSY	1	
5	6Y8-82582-01-00	CAP 1 (2PIN)	1	UR
6	6Y8-82582-11-00	CAP 1 (4PIN)	1	UR
7	6Y8-82553-41-00	30FT MAIN BUS	1	UR
7	6Y8-82553-01-00	1FT MAIN BUS	1	UR
7	6Y8-82553-11-00	15FT MAIN BUS	1	UR
7	6Y8-82553-21-00	20FT MAIN BUS	1	UR
7	6Y8-82553-31-00	25FT MAIN BUS	1	UR
7	6Y8-82553-50-00	10FT MAIN BUS	1	UR
8	6Y8-82521-41-00	9FT PIGTAIL BUS	1	UR
8	6Y8-82521-31-00	6FT PIGTAIL BUS	1	UR
8	6Y8-82521-21-00	3FT PIGTAIL BUS	1	UR
8	6Y8-82521-51-00	12FT PIGTAIL BUS	1	UR
8	6Y8-82521-01-00	1FT PIGTAIL BUS	1	UR
8	6Y8-82521-11-00	2FT PIGTAIL BUS	1	UR
9	6Y8-83553-01-00	8FT POWER WIRE	1	
10	6G1-82151-00-00	.FUSE (10A)	1	
11	6Y8-82570-02-00	PANEL SW., TWIN	1	
12	6Y8-82571-01-00	.PLATE, PANEL SWITCH	1	
13	6Y8-82510-02-00	.MAIN SWITCH ASSY	2	
14	676-82577-00-00	..CAP, KEY	1	
15	6K1-82575-00-00	.ENGINE STOP SWITCH ASSY	1	
16	682-82556-00-00	..LANYARD, STOP SWITCH	1	
17	6R5-83383-00-00	.BUZZER	2	
18	68V-81950-00-00	.RELAY ASSY	2	
19	6Y8-82507-00-00	.LEAD, IGNITION SWITCH RELAY	1	
20	64D-82581-00-00	.STAY, CORD CLAMP	2	
21	97303-05012-00	.BOLT	2	
22	92903-05100-00	.WASHER, SPRING	2	
23	95303-05700-00	.NUT	2	
24	6K1-82571-02-00	.PLATE, PANEL SWITCH	1	

# Part Notes

COMMAND\_LINK\_PLUS 0310 / COMMAND LINK ELECTRICAL 1

PART NUMBER	NOTE TEXT
682-82556-00-00 	OEM: This part number is among the Top 100 Most Popular Marine Maintenance Parts as of February 2013.



6Y82110-E030

# Part List

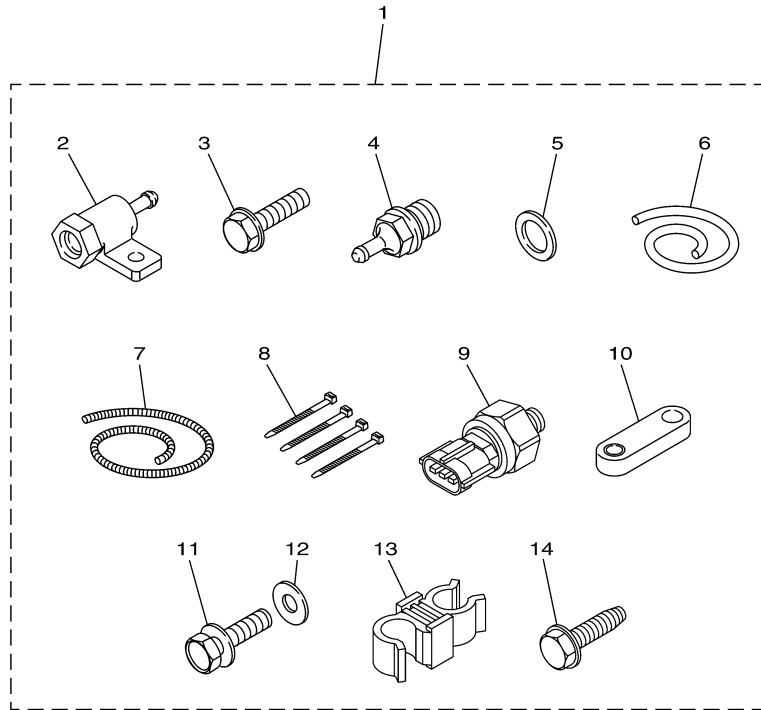
COMMAND\_LINK\_PLUS 0310 / COMMAND LINK ALTERNATE SENSORS 1

REF - NO	PART NUMBER	PART NAME	QUANTITY	REMARKS
1	6Y8-83688-01-00	TRANSOM MOUNT TRIDUCER	1	
2	6Y8-83688-11-00	PLASTIC THRU-HULL TRIDUCER	1	PLASTIC BODY
3	6Y8-83688-20-00	BRONZE THRU-HULL TRIDUCER	1	BRONZE BODY
4	6Y8-82521-31-00	6FT PIGTAIL BUS	1	UR
4	6Y8-82521-41-00	9FT PIGTAIL BUS	1	UR
4	6Y8-82521-21-00	3FT PIGTAIL BUS	1	UR
4	6Y8-82521-51-00	12FT PIGTAIL BUS	1	UR
4	6Y8-82521-01-00	1FT PIGTAIL BUS	1	UR
4	6Y8-82521-11-00	2FT PIGTAIL BUS	1	UR



### Cooling water pressure sensor

Part No.	Remarks
60V-8A4L0-12	Fuel injected F30-F115, HPDI



601M10M-J150

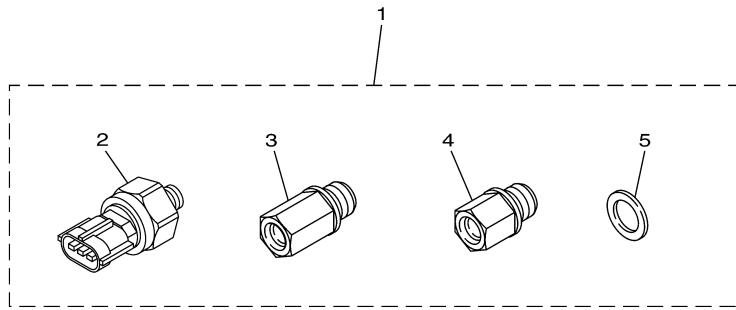
# Part List

COMMAND\_LINK\_PLUS 0310 / COMMAND LINK ALTERNATE SENSORS 2

REF - NO	PART NUMBER	PART NAME	QUANTITY	REMARKS
1	60V-8A4L0-12-00	SENSOR, MODULE	1	
2	60V-8366D-00-00	.ADAPTOR, INPUT	1	
3	95895-06025-00	.BOLT, FLANGE	1	
4	60V-83667-00-00	.SENDER, WATER PRESSURE	1	
5	90430-14115-00	.GASKET	1	
6	90445-07018-00	.HOSE (L1400)	1	
7	90447-07015-00	.HOSE, COVER (L: 1300MM)	1	
8	90465-11M10-00	.CLAMP	4	
9	6AW-8366B-00-00	.SENSOR, WATER PRESSURE	1	
10	60V-8257V-00-00	.PLATE, CONNECTOR	1	
11	97095-06016-00	.BOLT	1	
12	92995-06600-00	.WASHER	1	
13	90464-09021-00	.CLAMP	1	
14	90109-06M81-00	.BOLT	1	

### Cooling water pressure sensor

Part No.	Remarks
69J-8A4L0-11	F150-F250



601M10M-H160

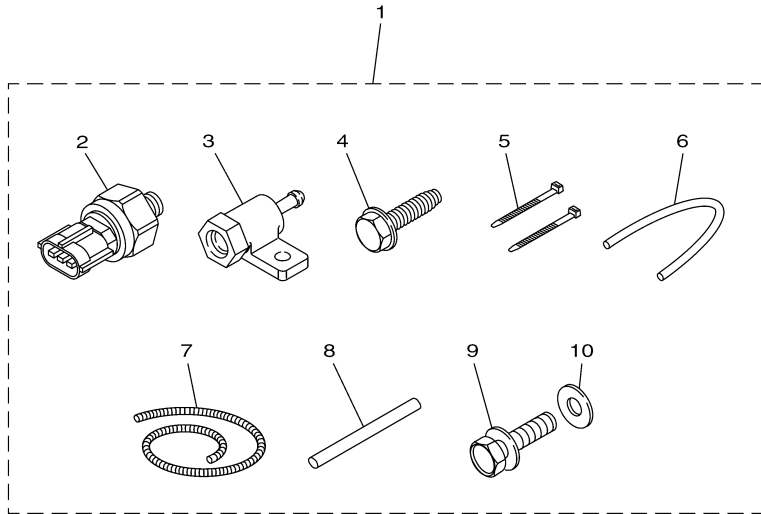
# Part List

COMMAND\_LINK\_PLUS 0310 / COMMAND LINK ALTERNATE SENSORS 3

REF - NO	PART NUMBER	PART NAME	QUANTITY	REMARKS
1	69J-8A4L0-11-00	WATER PRESSURE SENSOR KIT	1	
2	6AW-8366B-00-00	.SENSOR, WATER PRESSURE	1	
3	69J-8366C-00-00	.ADAPTOR, INPUT	1	
4	63P-8366C-00-00	.ADAPTOR, INPUT	1	
5	90430-14115-00	.GASKET	1	

### Speed sensor

Part No.	Remarks
60V-8A4L1-11	Fuel injected F30-F250, HPDI



6X62100-J370

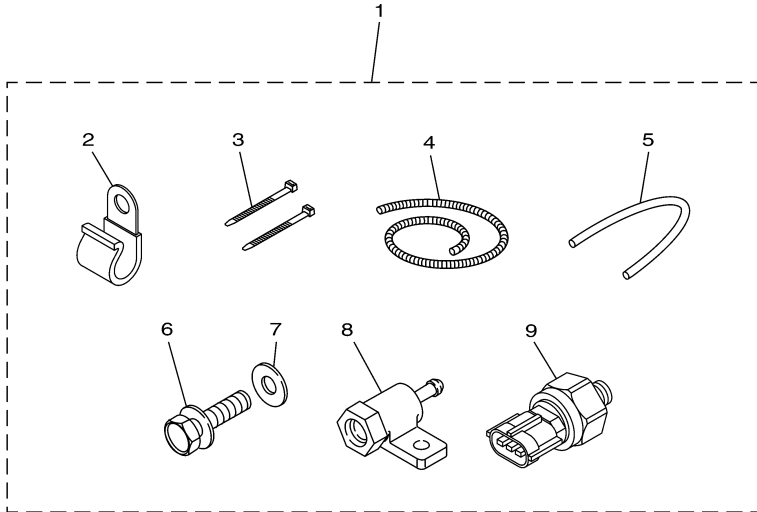
# Part List

COMMAND\_LINK\_PLUS 0310 / COMMAND LINK ALTERNATE SENSORS 4

REF - NO	PART NUMBER	PART NAME	QUANTITY	REMARKS
1	60V-8A4L1-11-00	SENSOR, MODULE 1	1	
2	6AW-8366B-00-00	.SENSOR, WATER PRESSURE	1	
3	60V-8366D-00-00	.ADAPTOR, INPUT	1	
4	90109-06M81-00	.BOLT	1	
5	90465-11M10-00	.CLAMP	2	
6	90445-07017-00	.HOSE (L: 550MM)	1	
7	90447-07013-00	.HOSE, COVER (L: 700MM)	1	
8	60V-42629-00-00	.SEAL	1	
9	97095-06016-00	.BOLT	1	
10	92995-06600-00	.WASHER	1	

### Speed sensor

Part No.	Remarks
6AW-8A4L1-01	F300/F350 * Additional transom pitot tube (688-83556-01) and pressure tube(688-83557-00) required.



601M10M-H180

# Part List

COMMAND\_LINK\_PLUS 0310 / COMMAND LINK ALTERNATE SENSORS 5

REF - NO	PART NUMBER	PART NAME	QUANTITY	REMARKS
1	6AW-8A4L1-01-00	SENSOR, MODULE 1	1	
2	90465-06M86-00	.CLAMP	2	
3	90465-14M66-00	.CLAMP	2	
4	90447-07015-00	.HOSE, COVER (L: 1300MM)	1	
5	90445-07018-00	.HOSE (L1400)	1	
6	97095-06016-00	.BOLT	1	
7	92995-06600-00	.WASHER	1	
8	60V-8366D-00-00	.ADAPTOR, INPUT	1	
9	6AW-8366B-00-00	.SENSOR, WATER PRESSURE	1	