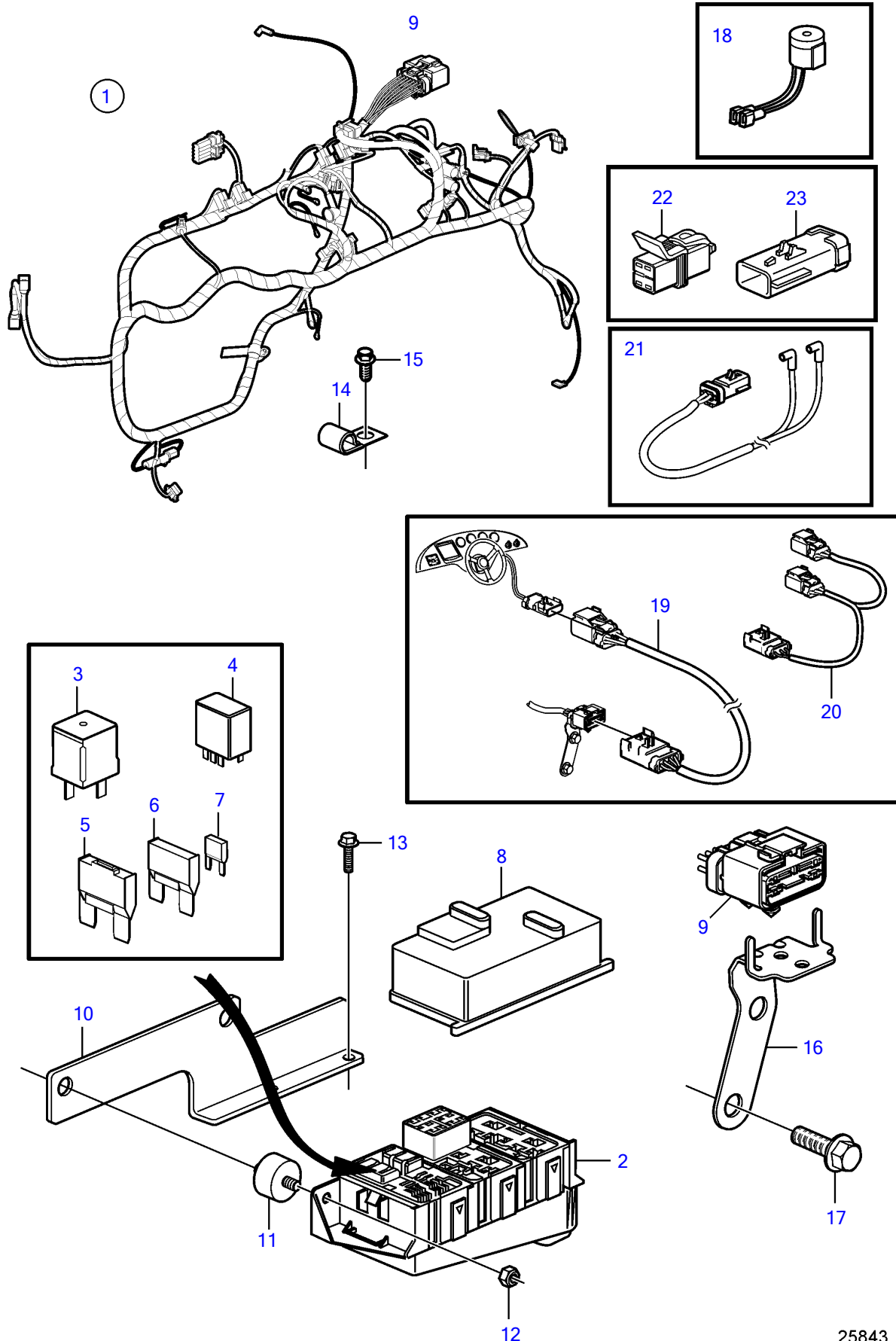


V8-300-A, V8-320-A



V8-300-A, V8-320-A

| REF | PART NO.  | QTY | DESCRIPTION         | NOTES   |
|-----|-----------|-----|---------------------|---|
| 1   | 21512118  | 1   | Wiring harness      |   |
| 2   |           | 1   | • Fuse box          | not sold separately                             |
| 3   | 3858809   | 3   | • Relay             |   |
| 4   | 3841366   | 2   | • Relay             |   |
| 5   | 3884849   | 1   | • Fuse              | 40A   |
| 6   | 3841370   | 1   | • Fuse              | 20A   |
|     | 3841371   | 1   | • Fuse              | 40A   |
| 7   | 3841373   | 1   | • Fuse              | 5A  |
|     | 3863403   | 1   | • Fuse              | 7.5A  |
|     | 3841372   | 1   | • Fuse              | 10A   |
|     | 3861373   | 1   | • Fuse              | 15A   |
|     | 3861374   | 1   | • Fuse              | 20A   |
| 8   |           | 1   | • Cover plate       | not sold separately                             |
| 9   |           | 1   | • Connector, 14 pin | not sold separately                             |
| 10  |           | 1   | Bracket             |   |
| 11  | 3840402   | 2   | Mounting base       |   |
| 12  | 3852118   | 2   | Nut                 |   |
| 13  | 946544    | 2   | Flange screw        |   |
| 14  | (3852146) | 2   | Clamp, J            | Obsolete part, D=.375" (9.5mm)                  |
|     | 3852434   | 2   | Clamp, J            | D=.750" (19.0mm)                                |
|     | 3852490   | 1   | Attaching clamp     |   |
| 15  | (3853557) | 2   | Flange screw        | Obsolete part, 3/8" - 16 unc, L=0.75" (19mm)    |
| 16  | 3884234   | 1   | Bracket             |   |
| 17  | (3853557) | 2   | Flange screw        | Obsolete part, 3/8" - 16 unc, L=0.75" (19mm)    |
| 18  | 3883708   | 1   | Alarm kit           |   |
| 19  | 21147169  | 1   | Wiring harness      | L=3.0m, 10 ft.                                  |
|     | 21147170  | 1   | Wiring harness      | L=6.0m, 19.7 ft.                                |
|     | 21147171  | 1   | Wiring harness      | L=8.0m, 26.2 ft.                                |
| 20  | 3887733   | 1   | Wiring harness, y   |   |
| 21  | 21544456  | 1   | Wiring harness      | exhaust over-heat sensors                       |
| 22  | 21544465  | 7   | Cardboard tube      | for sensor leads not used on this specification |
| 23  | 21544466  |     | Cardboard tube      | for sensor leads not used on this specification |