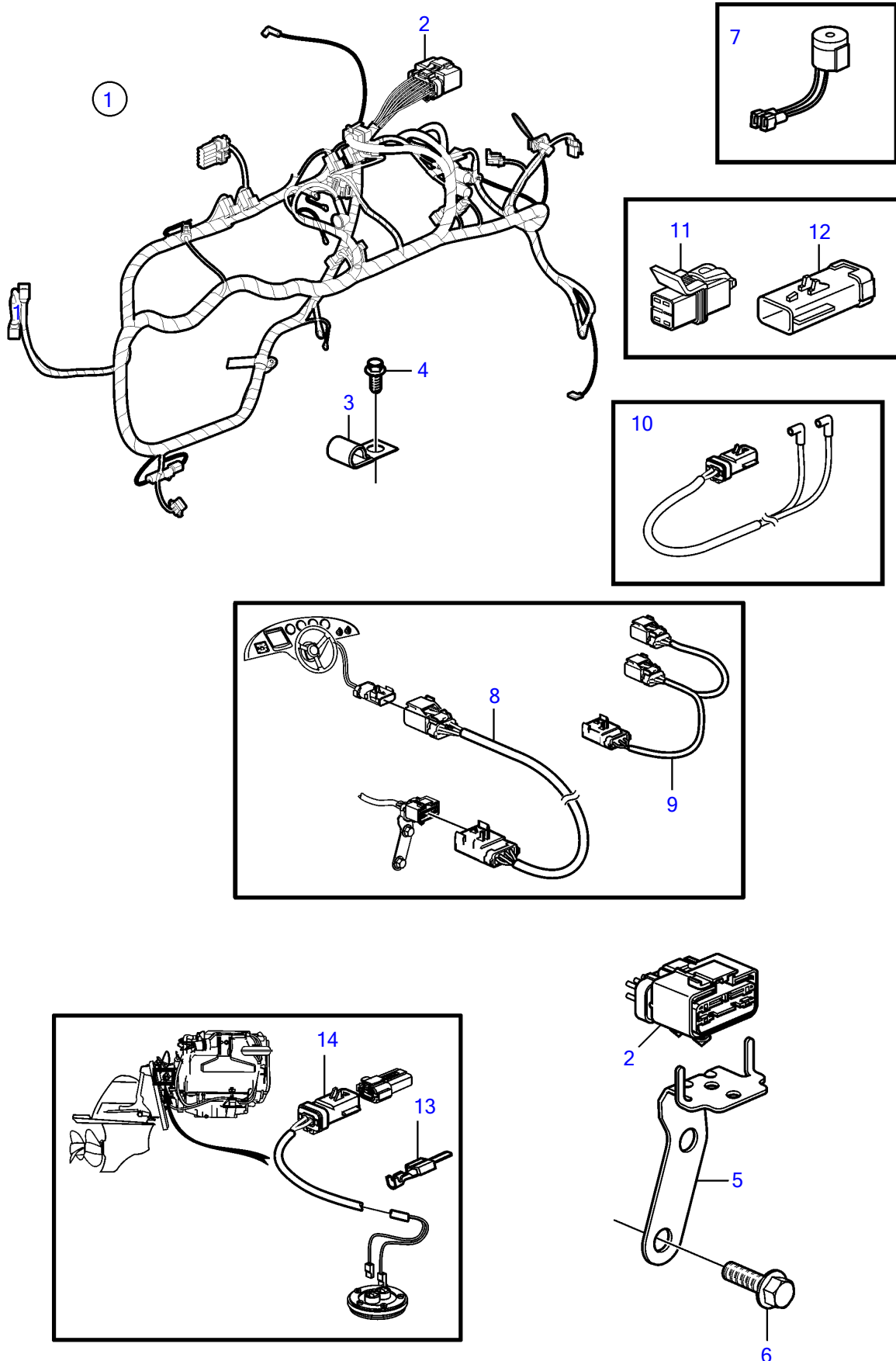


V8-225-CE-A, V8-300-CE-A, V8-320-CE-A



V8-225-CE-A, V8-300-CE-A, V8-320-CE-A

REF	PART NO.	QTY	DESCRIPTION	NOTES
1	21871583	1	Wiring harness	
2		1	• Connector, 14 pin	
3	(3852146)	2	Clamp, J	Obsolete part, D=.375" (9.5mm)
	3852434	2	Clamp, J	D=.750" (19.0mm)
	3852490	1	Attaching clamp	
4	(3853557)	2	Flange screw	Obsolete part, 3/8" - 16 unc, L=0.75" (19mm)
5	3884234	1	Bracket	
6	(3853557)	2	Flange screw	Obsolete part, 3/8" - 16 unc, L=0.75" (19mm)
7	3883708	1	Alarm kit	
8	21147169	1	Wiring harness	L=3.0m, 10 ft.
	21147170	1	Wiring harness	L=6.0m, 19.7 ft.
	21147171	1	Wiring harness	L=8.0m, 26.2 ft.
9	3887733	1	Wiring harness, y	
10	21544456	1	Wiring harness	exhaust over-heat sensors
11	21544465	4	Cardboard tube	for sensor leads not used on this specification
12	21544466	3	Cardboard tube	for sensor leads not used on this specification
13	21916199	8	Terminal	
14		4	Housing	FCI 54200210