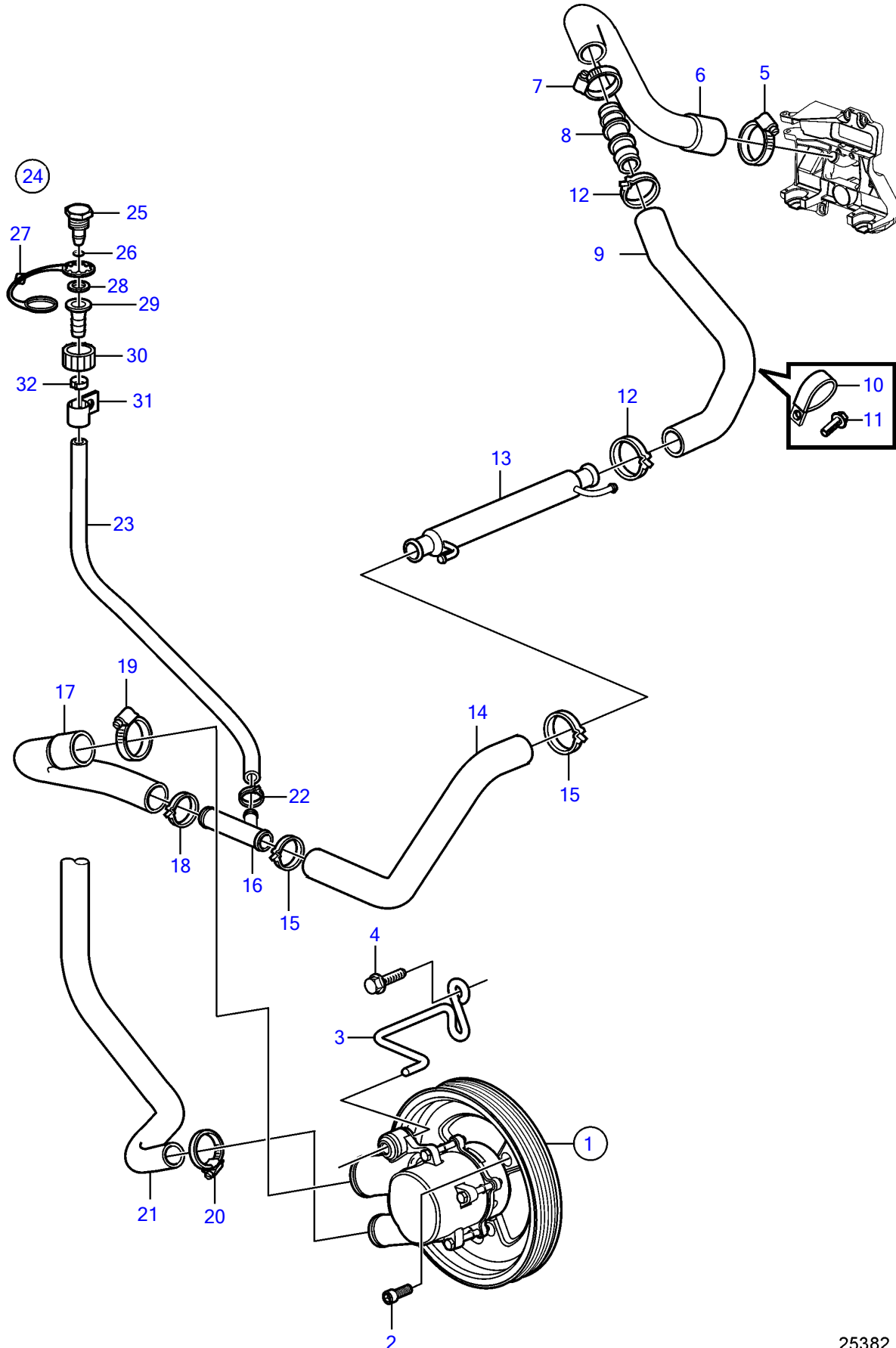


V8-225-CE-A, V8-300-CE-A, V8-320-CE-A



V8-225-CE-A, V8-300-CE-A, V8-320-CE-A

REF	PART NO.	QTY	DESCRIPTION	NOTES
1	21212799	1	Pump	
2	3857939	3	Screw	
3	3812240	1	Bracket	
4	3860163	2	Flange screw	
5	3812302	1	Hose clamp	
6	21340837	1	Hose	
7	3863444	2	Hose clamp	
8	21429137	1	Connector	
9	21429139	1	Hose	
10	3853312	2	Clamp	
	21619466	2	Attaching clamp	
11	(3853557)	2	Flange screw	Obsolete part, 3/8" - 16 unc, L=0.75" (19mm)
12		2	Hose clamp	
13	21399019	1	Hydraulic oil cooler	
14	21340840	1	Hose	
15	982645	2	Clamp	
16	3862699	1	T-pipe	
17	21429134	1	Hose	
18	3863440	1	Hose clamp	
19		1	Hose clamp	
20	3852602	1	Hose clamp	
21	3817817	1	Hose, therm. housing	For seawater cooled engine
	21338608	1	Hose, heat exchanger	For freshwater cooled engine
22	978173	1	Hose clamp	
23	3857823	1	Hose	
24	3807440	1	Connector	
25		1	• Cap	not sold separately
26	942978	1	• O-ring	
27	3862082	1	• Retainer	
28	3807664	1	• Washer	
29		1	• Connector	not sold separately
30		1	• Connector	not sold separately
31	3862891	1	Attaching clamp	
32	978174	1	Hose clamp	