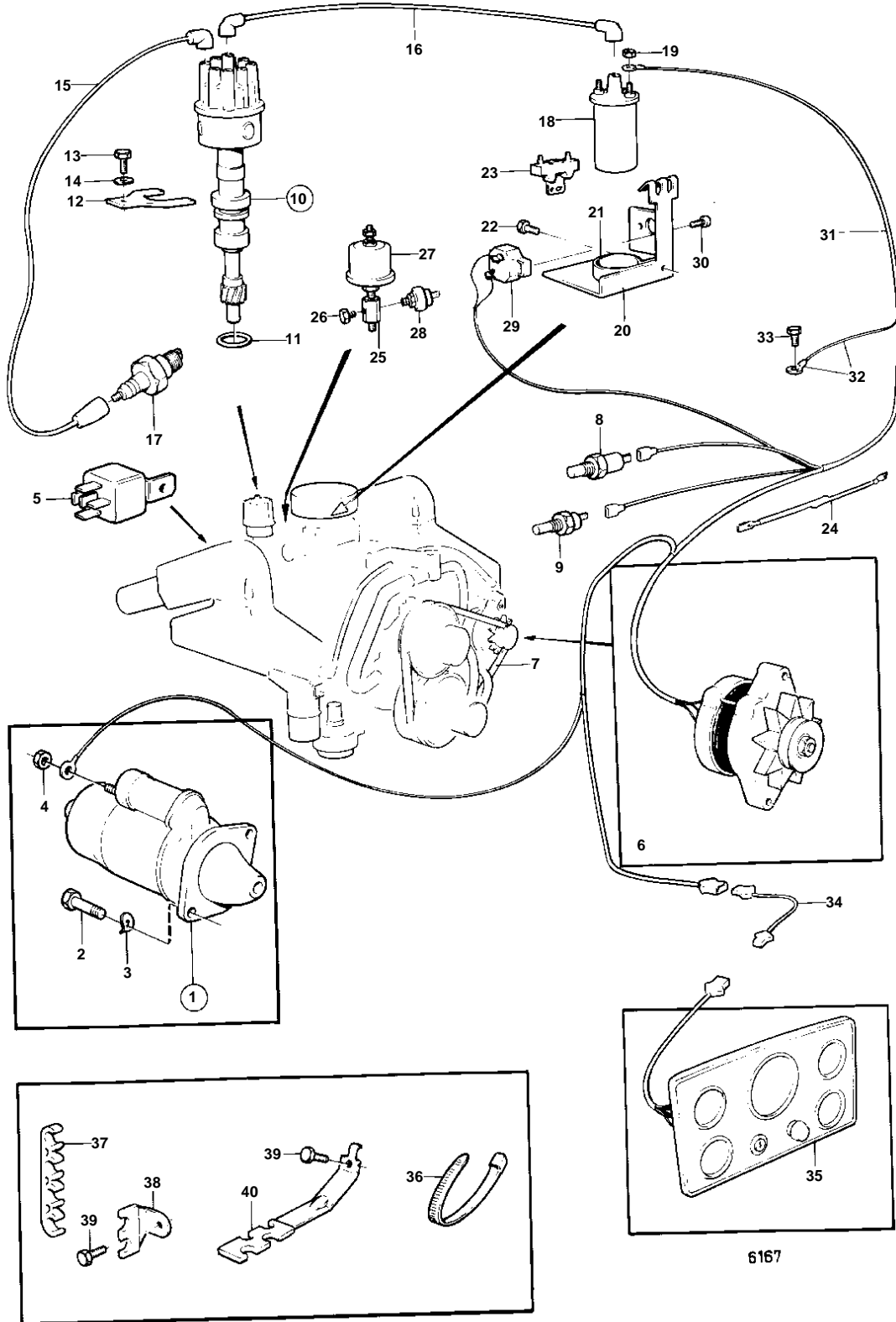


BB225A



6167

BB225A

REF	PART NO.	QTY	DESCRIPTION	SEE SEC.	NOTES
1	841377	1	Starter motor		REPL BY 855334
				17247	
	855334	1	Starter motor, STARTER MOTOR COMPS NOT SPEC.		
	841376	1	Starter motor		FOR ENGINE WITH OPPOSITE ROTATION.
				17247	
2	940134	2	Hexagon screw		
3	941909	2	Spring washer		
4	955827	1	Hexagon nut		
	940179	2	Hexagon nut		
5	841177	1	Relay		
6		1	ALTERNATOR AND INSTALLATION COMPONENTS	17240	
7	958497	1	V-belt		
8	835630	1	Temperature sensor		SEE GROUP 2B
	835649	1	Sensor		FOR FLY BRIDGE., SEE GROUP 9
9		1	Thermo monitor		SEE GROUP 2A
10	841069	1	Distributor		(834855)
				17243	
11	835154	1	Gasket		
12	841530	1	Retainer		
13	955535	1	Hexagon screw		
14	941744	1	Washer		
15	841228	2	Ignition cable		CYL 1,2
	841227	2	Ignition cable		CYL 3,4
	841226	2	Ignition cable		CYL 5,6
	841225	2	Ignition cable		CYL 7,8
16	855674	1	Ignition cable		
17	876047	2	Spark plug kit		
18	835998	1	Ignition coil		
19		2	Nut		
20		1	Bracket		SEE GROUP 2D
21	1219561	1	Clamp		
22		1	Screw		
23	835999	1	Series resistance		
24	834784	1	Resistor		
25		1	NIPPLE		MO 15712-19205., REPL BY 841891
		1	Nipple		
26	16325	1	Plug		MO 15712-19205.
27	834920	1	Oil pressure sensor		
	834921	1	Oil pressure sensor		FOR FLY BRIDGE., (835651)
28	841599	1	Pressure monitor		MO15712-
29	841178	1	Automatic fuse		40A
30	950013	2	Cross recessed screw		
31	841822	1	Cable trunk		
32		X	CABLE AND TERMINALS	17252	
33	955511	1	Hexagon screw		(835369)
34		X	Cable trunk		FOR INSTRUMENT PANEL 841094 AND 841095., L = 3000 MM
	835670	X	Cable trunk		FOR INSTRUMENT PANEL 841096 AND 841097., L = 6000mm
35		1	Instrument panel		
				17248	
		1	Panel		EUR
				17249	
36	948210	X	Cable tie		
37		2	Retainer		
38		2	Retainer		
39	955511	2	Hexagon screw		(835369)
40	835427	2	Retainer		