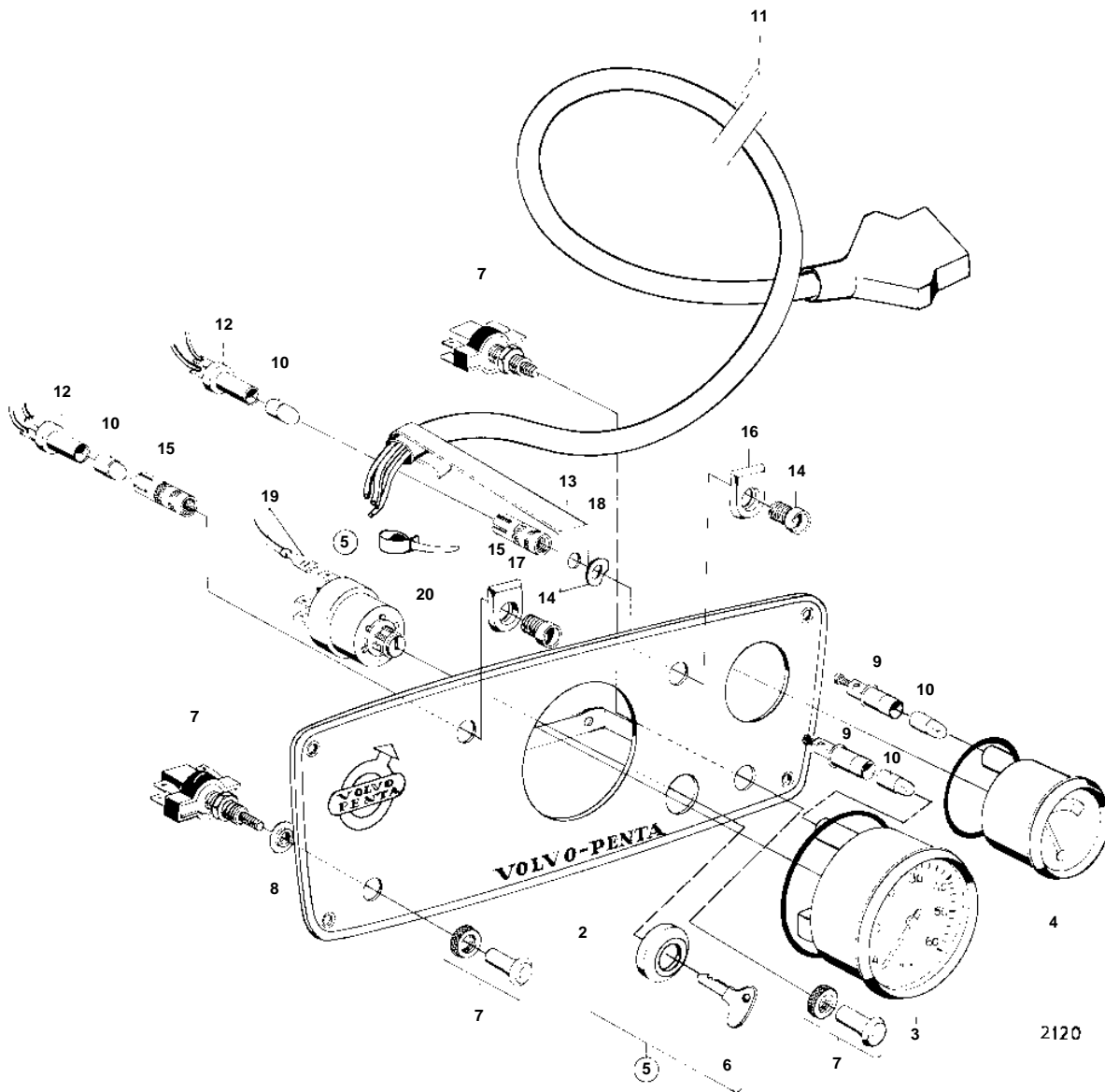


①



| REF | PART NO. | QTY | DESCRIPTION | SEE SEC. | NOTES |
|-----|----------|-----|-------------------------|-------------|----------------------------|
| 1 | | 1 | Instrument panel | | |
| 2 | | 1 | · Instrument panel | | |
| 3 | | 1 | · Tachometer | | |
| 4 | 841233 | 1 | · Thermometer | | (831475) |
| 5 | 870685 | 1 | · Starter switch | | |
| 6 | | 2 | · · Key | | ÅKERMAN SPEC. 867477. |
| | | | Bulletin P-36-4-1 | P-36-4-1-EN | Deleted Part No's for Keys |
| 7 | | 2 | · Pull switch | | |
| 8 | | 1 | · Washer | | |
| 9 | 808176 | 2 | · Lamp socket | | |
| 10 | 19923 | 4 | · Bulb | | |
| 11 | | 1 | · CABLE UNIT | | GROUND CABLE-STARTER. |
| 12 | 808175 | 2 | · Lamp socket | | |
| 13 | | 1 | · Attaching brace | | |
| 14 | | 2 | · Glass | | |
| 15 | 819350 | 2 | · Sleeve | | |
| 16 | | 1 | · Sign | | "OIL"2 |
| 17 | | 1 | · Sign | | "AMP" |
| 18 | 941908 | 1 | · Spring washer | | |
| 19 | | X | · CABLES AND CABLE | 12858 | |
| | | | TERMINALS CLAMPING BAND | | |
| 20 | 827353 | 2 | · · Cable tie | | |