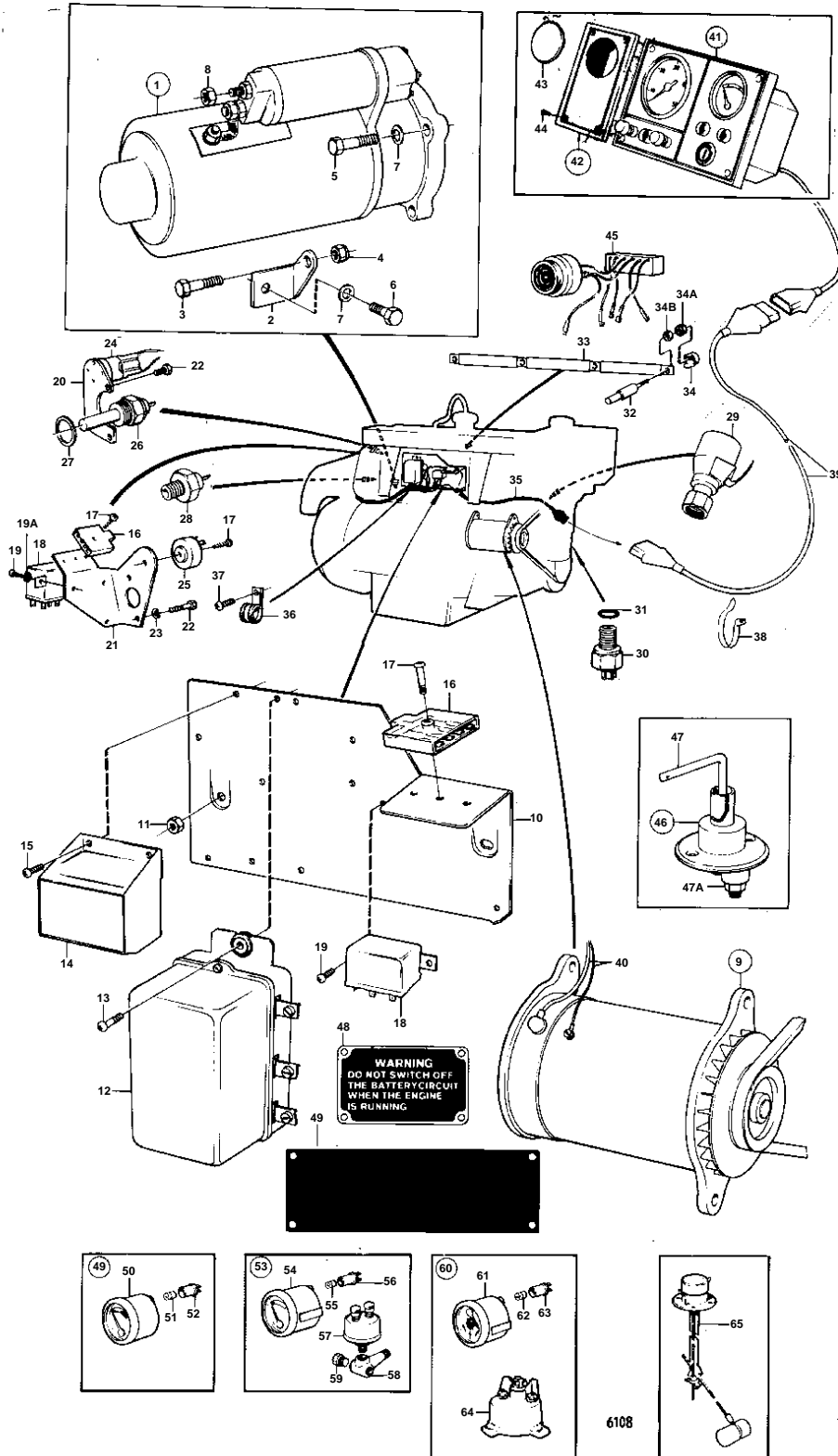


AQD21A, MD21A



## AQD21A, MD21A

| REF | PART NO. | QTY | DESCRIPTION                            | SEE SEC. | NOTES  |
|-----|----------|-----|--|----------|--|
| 1   | 826755   | 1   | Starter motor                          |          |  |
|     |          |     |  | 12847    |  |
|     | 829712   | 1   | Starter motor                          |          | 12V MOXXXX/150308-   |
|     |          |     | Bulletin 44-12                         | 44-12-EN | Starter Motor for MD21/32  |
| 1   |          |     |  | 12850    |  |
|     |          | 1   |  |          | 24V REPL BY 829649   |
|     |          |     |  | 12848    |  |
|     |          | 1   | Starter motor                          |          | 24V MOXXXX/133166-   |
|     |          |     |  | 12849    |  |
| 2   |          | 1   | Bracket                                |          |  |
| 3   | 955339   | 1   | Hexagon screw                          |          |  |
| 4   | 963108   | 1   | Lock nut                               |          |  |
| 5   | 955317   | 3   | Hexagon screw                          |          |  |
| 6   | 955315   | 1   | Hexagon screw                          |          |  |
| 7   | 960148   | 4   | Washer                                 |          |  |
| 8   | 955782   | 1   | Hexagon nut                            |          |  |
|     | 955780   | 1   | Hexagon nut                            |          |  |
| 9   |          | 1   | GENERATOR AND INSTALLATION COMPONENTS  |          | 12V  |
|     |          |     |  | 12840    |  |
|     |          | 1   | ALTERNATOR AND INSTALLATION COMPONENTS |          | 12V, 24V   |
|     |          |     |  | 12835    |  |
| 10  |          | 1   | Bracket                                |          | MO-XXXX/103386   |
| 11  | 955782   | 2   | Hexagon nut                            |          | SEE GROUP 2B   |
| 12  |          | 1   | Relay                                  |          | REPLACED BY 1EA 841765 ALTERNATOR, 1EA 841812 PULLEY, 1EA 845021 TENSION IRON, 1EA 949607 WASHER, 1EA 955780 NUT, 1EA 955781 NUT AND 1EA 941905 RESILIENT WASHER., 12V |
| 13  |          | 3   | Cross recessed screw                   |          |  |
| 14  | 843547   | 1   | Governor                               |          | 12V, MO-XXXX/103386  |
|     |          | 1   | Relay, CHARGING RELAY                  |          | 24V  |
|     |          |     |  | 12835    |  |
| 15  |          | 3   | Cross recessed screw                   |          | MO-XXXX/103386   |
|     |          | 3   | Cross recessed screw                   |          | 24V, MOXXXX/103387-  |
| 16  | 824823   | 1   | Fuse box                               |          |  |
| 17  | 955142   | 1   | Cross recessed screw                   |          | MO-XXXX/103386   |
|     |          | 2   | Screw                                  |          | MO-XXXX/103386   |
| 18  | 870670   | 1   | Relay                                  |          | 12V  |
|     | 239883   | 1   | Relay                                  |          | 24V  |
| 19  |          | 2   | Cross recessed screw                   |          |  |
| 19A | 960138   | 2   | Washer                                 |          |  |
| 20  |          | 1   | Bracket                                |          | MO-XXXX/103386   |
| 21  |          | 1   | Bracket                                |          | MOXXXX/103387-   |
| 22  |          | 2   | Hexagon screw                          |          |  |
| 23  | 941907   | 2   | Spring washer                          |          |  |
| 24  |          | 1   | Resistor                               |          | 12V, MO-XXXX/103386  |
|     |          | 1   | Resistor                               |          | 24V, MO-XXXX/103386  |
| 25  | 829637   | 1   | Resistor                               |          | 12V, MOXXXX/103387-  |
|     |          | 1   | Resistor                               |          | 24V, MOXXXX/103387-  |
| 26  | 827151   | 1   | Temperature sensor                     |          |  |
| 27  | 957181   | 1   | Gasket                                 |          |  |
| 28  | 1266085  | 1   | Pressure switch                        |          | (672910)   |
| 29  | 1507899  | 1   | Tachometer sensor                      |          | MO-XXXX/103386   |
| 30  | 1502028  | 1   | Tachometer sensor                      |          | MOXXXX/103387-   |
| 31  | 960169   | 1   | O-ring                                 |          |  |
| 32  |          | 4   | GLOW PLUG                              |          | FOR CHARGING OF 2 BATTERIES,USE CHARGE DISTRIBUTOR 831793, 12V REPL BY 870846  |
|     |          |     |  |          | MO-3112258/XXXX  |
|     | 870846   | 4   | Glow plug                              |          | 12V, MO-3124096/XXXX   |
|     | 829857   | 4   | Glow plug                              |          | 12V, MO3124097/XXXX-   |
|     |          | 4   | Glow plug                              |          | 24V  |

## AQD21A, MD21A

| REF | PART NO. | QTY | DESCRIPTION                              | SEE SEC. | NOTES  |
|-----|----------|-----|--|----------|--|
| 33  |          | 1   | CONTACT STRIP                            |          | MO-12769/XXXXX,REPLACED BY 841378., (818263)<br>EARLY TYPE   |
|     |          | 3   | Cable                                    |          | LATE TYPE  |
| 34  |          | 4   | Switch guard                             |          | MO-3124096/XXXX  |
|     |          | 4   | Protective cap                           |          | MO3124097/XXXX-  |
| 34A | 955780   | 4   | Hexagon nut                              |          | MO3124097/XXXX-  |
| 34B | 941905   | 4   | Spring washer                            |          | MO3124097/XXXX-  |
| 35  |          | 1   | Cable trunk                              |          | REPLACED BY 1EA 841765 ALTERNATOR, 1EA<br>841812 PULLEY, 1EA 845021 TENSION IRON, 1EA<br>949607 WASHER, 1EA 955780 NUT, 1EA 955781 NUT<br>AND 1EA 941905 RESILIENT WASHER. |
|     |          | 1   | Cable trunk                              |          | MO-XXXX/103386   |
|     |          | 1   | Cable trunk                              |          | MOXXXX/103387  |
| 36  | 952629   | 2   | Clamp                                    |          | REPLACED BY 1EA 841765 ALTERNATOR, 1EA<br>841812 PULLEY, 1EA 845021 TENSION IRON, 1EA<br>949607 WASHER, 1EA 955780 NUT, 1EA 955781 NUT<br>AND 1EA 941905 RESILIENT WASHER. |
|     | 952629   | 1   | Clamp                                    |          | MO-XXXX/103386   |
|     | 952631   | 1   | Clamp                                    |          | MOXXXX/103387-   |
| 37  |          | 2   | Cross recessed screw                     |          | MO-XXXX/103386   |
| 38  | 827353   | X   | Cable tie                                |          |  |
| 39  | 825738   | X   | Cable trunk, CABLE UNIT                  |          | MO-XXXX/103386   |
|     |          |     |  |          | L = 2500 MM  |
|     |          | X   | Extension cable'verl, EXTENSION<br>CABLE |          | MOXXXX/103387-   |
|     |          |     |  |          | L = 2500 MM, (829404)  |
|     | 820419   | X   | Cable, CABLE                             |          | MO-XXXX/103386   |
|     |          |     |  |          | L = 7000 MM  |
|     | 843214   | X   | Cable trunk, CABLE UNIT                  |          | MOXXXX/103387-   |
|     |          |     |  |          | L = 7000 MM, (829406)  |
|     |          |     | EXTENSION CABLE LIFT DEVICE              |          | SEE GROUP 9  |
| 40  |          | X   | CABLES AND CABLE TERMINALS               | 12858    |  |
| 41  |          | 1   | Instrument panel                         |          | ACC. TO CLASSIFICATION., 12V MO-XXXX/103386  |
|     |          |     |  | 12855    |  |
|     |          | 1   |  |          | ACC. TO CLASSIFICATION., MO 12770/XXXXX-.,<br>MOXXXX/103387-   |
|     |          |     |  | 12855    |  |
|     |          | 1   | Instrument panel                         |          | ACC. TO CLASSIFICATION., 12V MOXXXX/109884-  |
|     |          |     |  | 12857    |  |
|     |          | 1   | Instrument panel                         |          | ACC. TO CLASSIFICATION., 24V MO-XXXX/103386  |
|     |          |     |  | 12855    |  |
|     |          | 1   |  |          | ACC. TO CLASSIFICATION., REPLACED BY 1EA<br>841768., MOXXXX/103387-  |
|     |          |     |  | 12855    |  |
|     |          | 1   | Instrument panel                         |          | ACC. TO CLASSIFICATION., 24V MOXXXX/109884-  |
|     |          |     |  | 12857    |  |
| 42  |          | 1   | Instrument panel                         |          |  |
| 43  | 839128   | 1   | · Plastic plug                           |          |  |
| 44  | 944540   | 4   | · Screw                                  |          |  |
| 45  | 827940   | 1   | Alarm kit                                |          | 12V, SEE GROUP 9   |
|     |          | 1   | Alarm kit                                |          | 24V, SEE GROUP 9   |
| 46  | 870980   | 1   | Main switch                              |          |  |
| 47  | 243700   | 1   | · Handle                                 |          |  |
| 47A | 955783   | 2   | · Hexagon nut                            |          |  |
| 48  |          | 1   | Sign                                     |          |  |
|     |          | 1   | Sign                                     |          |  |
| 49  |          | 1   | Voltmeter                                |          |  |
| 50  |          | 1   | · Voltmeter                              |          |  |
| 51  | 19923    | 1   | · Bulb                                   |          |  |
| 52  | 808175   | 1   | · Lamp socket                            |          |  |
| 53  |          | 1   | Instrument                               |          |  |

## AQD21A, MD21A

| REF | PART NO. | QTY | DESCRIPTION                              | SEE SEC. | NOTES       |
|-----|----------|-----|--|----------|-------------|
| 54  |          | 1   | · Instrument                             |          |             |
| 55  | 19923    | 1   | · Bulb                                   |          |             |
| 56  | 808175   | 1   | · Lamp socket                            |          |             |
| 57  | 881432   | 1   | · Sensor                                 |          |             |
| 58  | 834391   | 1   | · T-nipple                               |          |             |
| 59  | 191026   | 1   | · Plug                                   |          |             |
| 60  |          | 1   | Rudder indicator                         |          |             |
| 61  |          | 1   | · Rudder indicator                       |          |             |
| 62  | 19923    | 1   | · Bulb                                   |          |             |
| 63  | 808175   | 1   | · Lamp socket                            |          |             |
| 64  | 837772   | 1   | · Position sensor                        |          |             |
| 65  |          | 1   | Tank gauge, TANK GAUGE<br>DRINKING WATER |          | SEE GROUP 9 |
|     |          | 1   | FUEL                                     |          | SEE GROUP 9 |