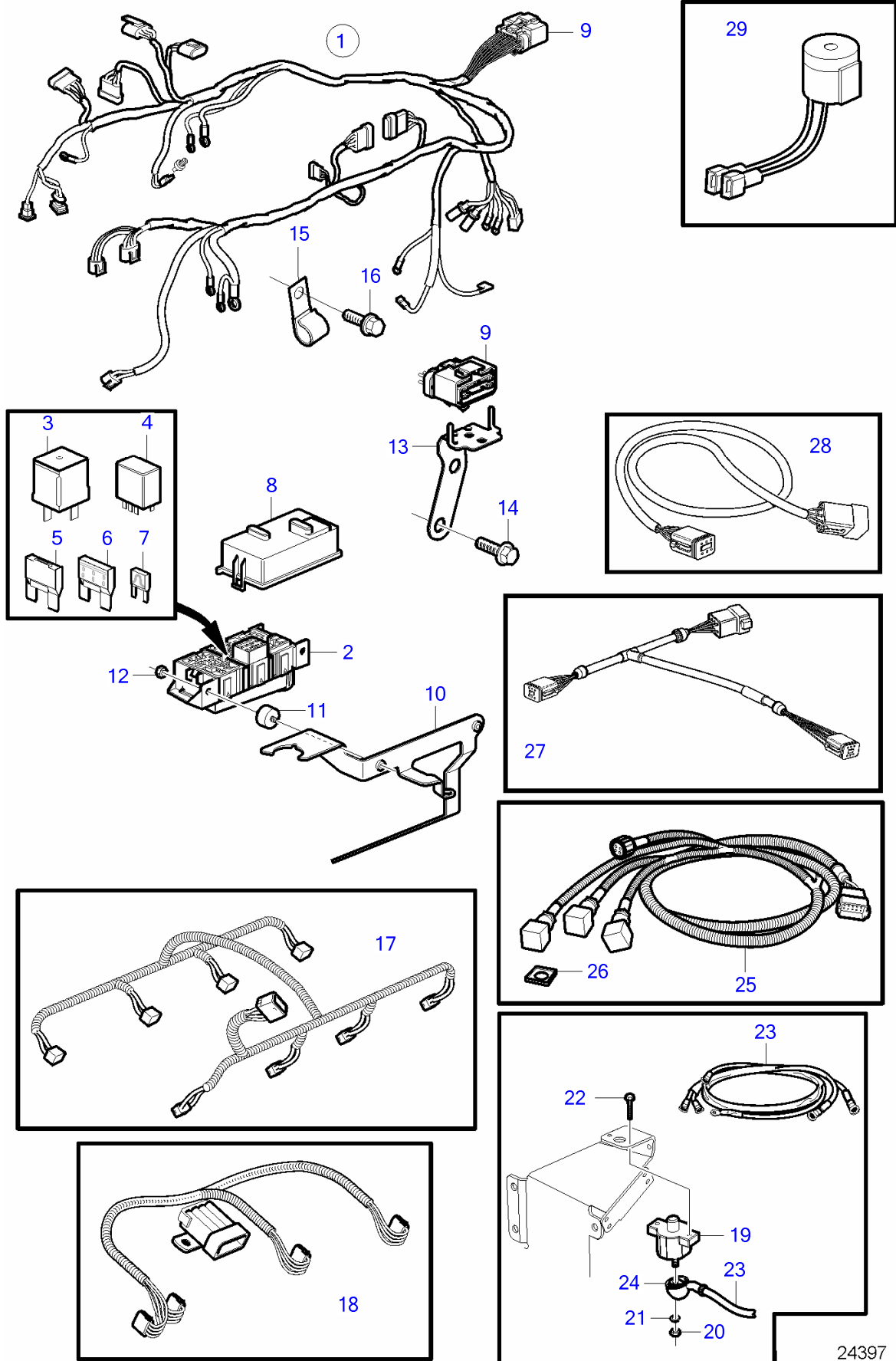


8.1IPSCE-PF, 8.1IPSCE-Q



8.1IPSCE-PF, 8.1IPSCE-Q

REF	PART NO.	QTY	DESCRIPTION	NOTES
1	3848910	1	Wiring harness	
2		1	• Fuse box	not sold separately
3	3858809	3	• Relay	
4	3841366	2	• Relay	
5	3884849	1	• Fuse	40A
6	3841370	1	• Fuse	20A
	3841371	1	• Fuse	40A
7	3841373	1	• Fuse	5A
	3863403	1	• Fuse	7.5A
	3841372	1	• Fuse	10A
	3861373	1	• Fuse	15A
	3861374	1	• Fuse	20A
8		1	• Cover plate	not sold separately
9		1	• Connector, 14 pin	not sold separately
10	21142245	1	Bracket	
11	3840402	2	Mounting base	
12	3852118	2	Nut	
13	3886663	1	Bracket	
14	946441	2	Flange screw	
15	(3852146)	2	Clamp	Obsolete part, D=.375" (9.5mm)
	3852434	1	Clamp	D=.750" (19.0mm)
	3852490	1	Attaching clamp	D=1.44" (36mm)
16	946441	2	Flange screw	
17	3861297	1	Wiring harness, fuel injector	
18	3863052	2	Wiring harness, ignition	
19	856337	1	Automatic fuse	50A
20		2	• Nut	not sold separately
21		2	• Washer	not sold separately
22	3853620	2	Hexagon screw	
23	3848909	1	Wiring harness	Alternator, Circuit breaker
24		1	Boot	not sold separately
25	3593778	1	Wiring harness	Shift solenoids, To 12 pin on engine
26		3	• Seal	not sold separately
27	3588972	1	Cable kit	Tee, PCU-HCU-IPS
28	3842733	1	Extension cable'verl	Engine-PCU-IPS
29	3883708	1	Alarm kit	Mounted at the helm.