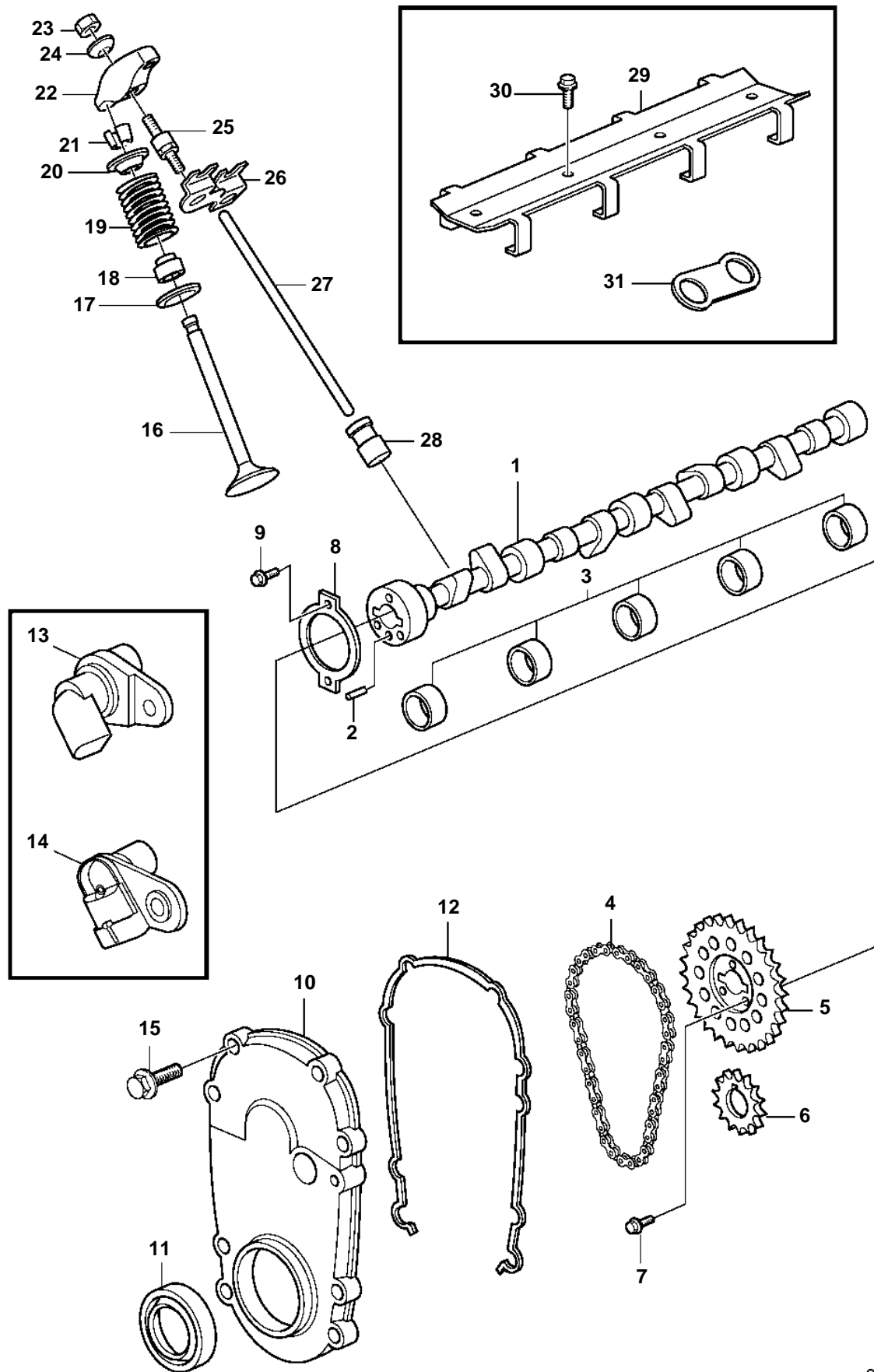


8.1GXi-D



8.1GXi-D

| REF | PART NO. | QTY | DESCRIPTION | NOTES |
|-----|----------|-----|---------------------------|--------------------|
| 1 | 3861266 | 1 | Camshaft | |
| 2 | 3855972 | 1 | • Pin | |
| 3 | 3856881 | 1 | Camshaft bearing kit | |
| 4 | 3861332 | 1 | Chain | |
| 5 | | 1 | Sprocket | TO SN 4012110786 |
| | 3808515 | 1 | Sprocket | FROM SN 4012110787 |
| 6 | 3861329 | 1 | Sprocket | |
| 7 | 3861248 | 3 | Screw | |
| 8 | 3855998 | 1 | Retainer | |
| 9 | 3861244 | 2 | Screw | |
| 10 | 3861269 | 1 | Timing gear cover | TO SN 4012110786 |
| | 3808514 | 1 | Timing gear cover | FROM SN 4012110787 |
| 11 | 3861319 | 1 | • Seal | |
| 12 | 3861281 | 1 | • Gasket | |
| 13 | 3859082 | 1 | Sensor, camshaft position | TO SN 4012110786 |
| 14 | 3808513 | 1 | Sensor, camshaft position | FROM SN 4012110787 |
| 15 | 3861247 | 6 | Screw | |
| 16 | 3861336 | 8 | Exhaust valve | STD |
| | 3861337 | X | Exhaust valve | O.S=0.015" |
| | 3861338 | X | Exhaust valve | O.S=0.030" |
| | 3861339 | 8 | Inlet valve | STD |
| | 3861237 | X | Inlet valve | O.S=0.015" |
| | 3861257 | X | Inlet valve | O.S=0.030" |
| 17 | 3855988 | 16 | Rotator | |
| 18 | 3861317 | 16 | Valve stem seal | |
| 19 | 3861335 | 16 | Valve spring | |
| 20 | 3855977 | 16 | Cap | |
| 21 | 3853351 | 32 | Valve collet | |
| 22 | 3861316 | 16 | Rocker arm | |
| 23 | 3853649 | 16 | Nut | |
| 24 | 3861232 | 16 | Ball | |
| 25 | 3861330 | 16 | Stud | |
| 26 | 3861294 | 8 | Guide | |
| 27 | 3861314 | 8 | Push rod | INTAKE |
| | 3861315 | 8 | Push rod | EXHAUST |
| 28 | 3855987 | 16 | Tappet | |
| 29 | 3855999 | 1 | Retainer | |
| 30 | 3861248 | 7 | Screw | |
| 31 | 3856000 | 8 | Guide | |