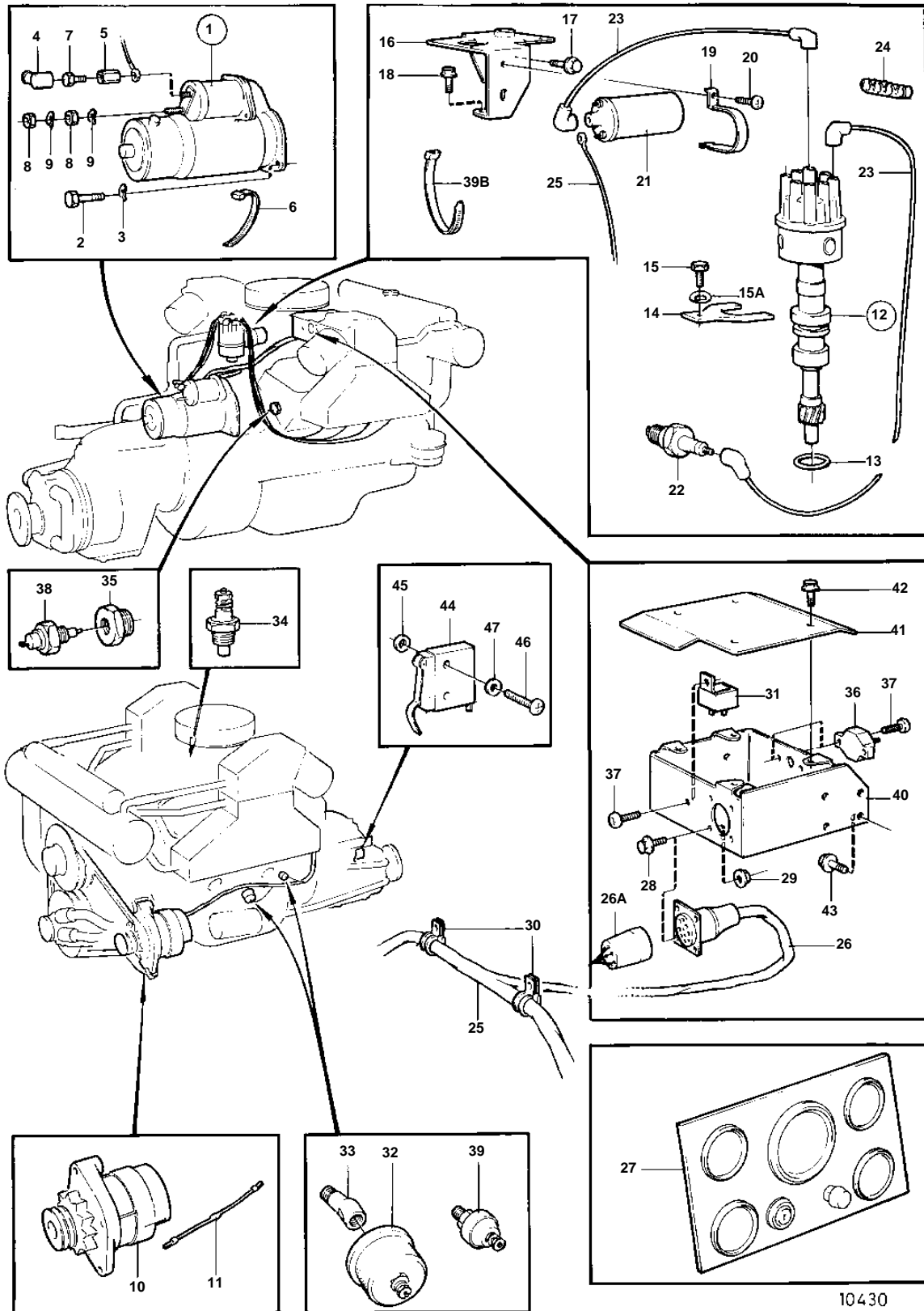


740A/MS5



10430

## 740A/MS5

REF	PART NO.	QTY	DESCRIPTION	SEE SEC.	NOTES
1	855334	1	Starter motor COMPONENTS NOT SPEC.		ALSO AVAILABLE AS AN EXCHANGE PART.
2	940134	2	Screw		
3	941909	2	Spring washer		
4	855798	1	Protecting sleeve		
5	855330	1	Nut		
6	948210	2	Strip clamp		
7	970943	1	Screw		
8	955780	2	Nut		
9	941905	2	Spring washer		
10		1	ALTERNATOR WITH INSTALLATION COMPONENTS	030-0195	
11	834784	1	Resistor		
12	855932	1	Distributor		
				030-0210	
13	835154	1	Gasket		
14	841530	1	Clamp		
15	940114	1	Screw		
15A	942336	1	Spring washer		
16		1	BRACKET		SEE GROUP 2D
17	946440	4	Flange screw		
18	942624	1	Screw		
19	856440	1	Clamp		
20	834371	1	Screw		
21	855706	1	Ignition coil		
22	876047	2	Spark plug kit		
23	856771	X	Ignition cable		L = 1000 MM. ALL IGNITION CABLES PARTNO 856771 WHICH ARE 1000MM AND SHOULD BE CUT OFF IN SUITABLE LENGTHS.
24	835429	2	Retainer		
25	856336	1	Cable trunk		
26		1	· EXTENSION		
26A	856881	X	Extension cable		L = 3000 MM
	856882	X	Extension cable		L = 6000 MM
27	856673	1	Instrument panel		EUR
				030-0570	
	856672	1	Instrument panel		USA
				030-0560	
28	946934	4	Flange screw		
29	945407	4	Flange nut		
30	942810	2	Clamp		
31	841177	1	Relay		
32	834920	1	Oil pressure sensor		
33	809109	1	Elbow nipple		
34	835630	1	Temperature sensor		
35	856327	1	Nipple		
36	856337	2	Fuse		50A
37	950013	6	Screw		
38	841890	1	Switch		
39	841599	1	Pressure monitor		
39B	948210	X	Strip clamp		
40	856317	1	Electrical distribut		
41	856524	1	Cover		
42	965175	4	Screw		
43	946440	4	Flange screw		
44	852049	1	Switch		
			CABLES AND TERMINALS	030-0625	
45	853220	1	Washer		
46	956052	2	Screw		
47	955890	2	Washer		