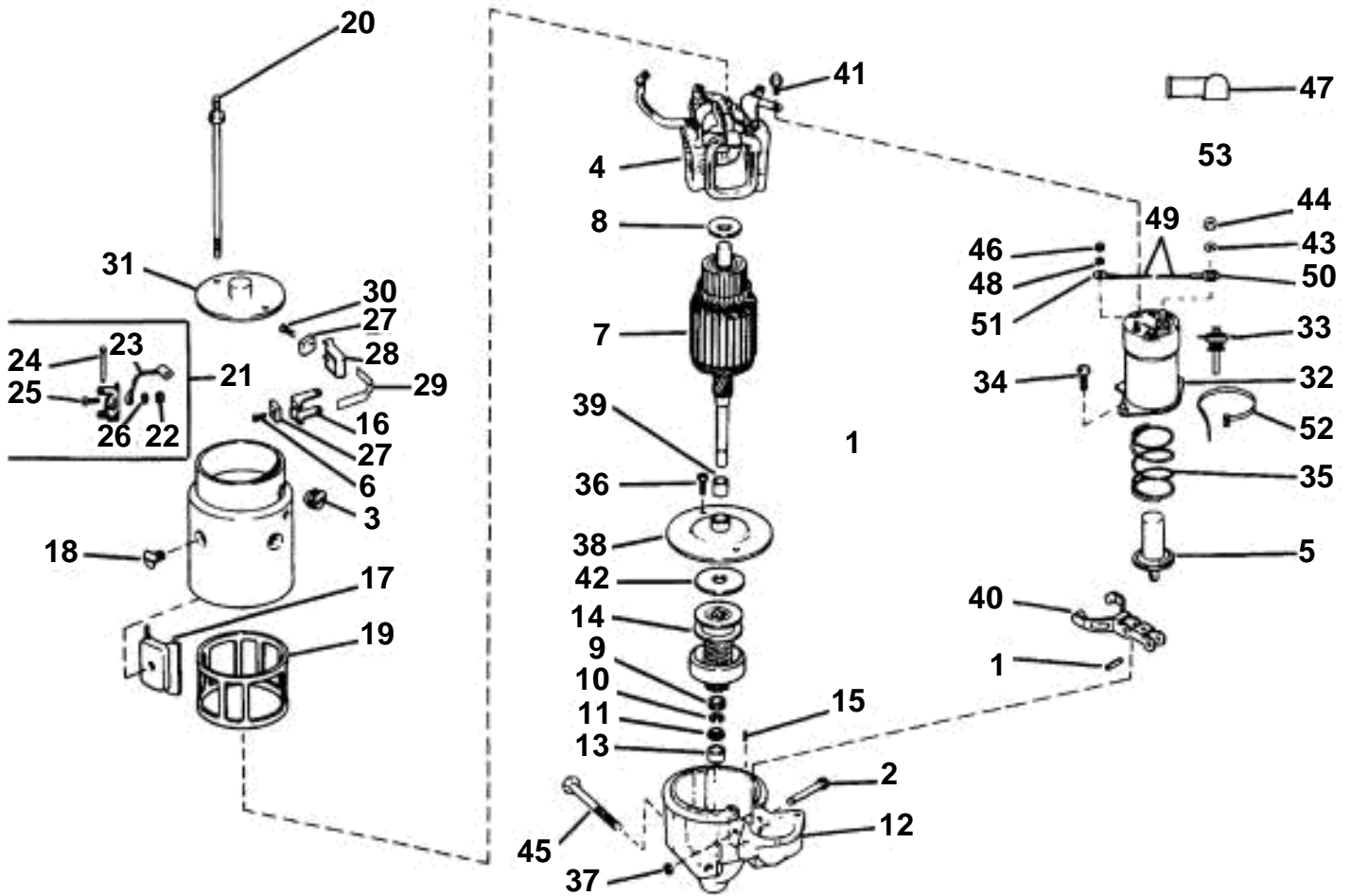


7.4GLPMDA, 7.4GLPMDM, 8.2GLPMDA, 8.2GLPMDM, 7.4GLIMDA, 7.4GLIMDM, 8.2GLIMDA, 8.2GLIMDM



**7.4GLPMDA, 7.4GLPMDM, 8.2GLPMDA, 8.2GLPMDM, 7.4GLIMDA, 7.4GLIMDM, 8.2GLIMDA, 8.2GLIMDM**

REF	PART NO.	QTY	DESCRIPTION	NOTES
1	3853982	1	Starter motor	
	3853185	1	• Pin, Plunger attaching	
2		1	• Stud, Shift lever	
3		1	• Grommet, Field frame	
4	3853999	1	• Coil	
5		1	• Piston	
6		2	• Screw, Ground brush	
7		1	• Rotor	
8	3852727	1	• Washer, drive stop	
9	3852725	1	• Sleeve, Pinion stop	
10	3852726	1	• Lock ring, Pinion stop	
11	3852724	1	• Sleeve, Thrust	
12		1	• Housing	
13	3852723	1	• • Bushing, bearing, drive end	
14	3853874	1	• Start gear	
15	3853183	1	• Pin, bearing, drive end	
16		2	• Carbon holder, Grounded	
17	3853191	1	• Pole shoe	
18	3853192	4	• Screw, Pole shoe	
19	3853235	4	• Isolator, Field coil	
20	3853872	1	• Stud	
	3852772	1	• Bolt	
21	3853871	2	• Carbon holder kit	
22	3852185	2	• • Nut, Support	
23		1	• • Cable, Brush ground	
24		1	• • Pin, Support	
25		2	• • Screw, Support	
26	3852001	2	• • Lock washer, Support	
27	3852721	4	• Carbon brush	
28	3853866	2	• Carbon holder, Insulated	
29	3852720	2	• Spring, Brush	
30	3852087	2	• Screw, Insulating brush	
31		1	• Cover	
32	3853998	1	• Solenoid	
33		1	• • Switch, Switch	
34	3852459	2	• Screw, Switch	
35	3852718	1	• Spring, Plunger return	
36	3853959	2	• Screw	
37	3853187	1	• Ring	
38		1	• Plate	
39		1	• • Bushing, Center	
40		1	• Lever, Shift	
41		1	• Screw, Field to switch	
42	3852715	1	• Thrust washer	
43	3852521	1	Washer, Metric	
44		1	Nut, Starter solenoid, metric	
45	3852138	2	Screw, Starter	
46	3852518	1	Nut, Solenoid, metric	
47	3852487	1	Protective cap, Battery cable	
48	3852520	1	Washer, Metric	
49	3853963	1	Cable, Starter motor	
50	3852527	1	• Cable terminal	
51		1	• Cable terminal	
52	3852423	1	Cable clamp, Drain hose	
53	3852146	1	Clamp, Lead to mounting bracket	Not shown