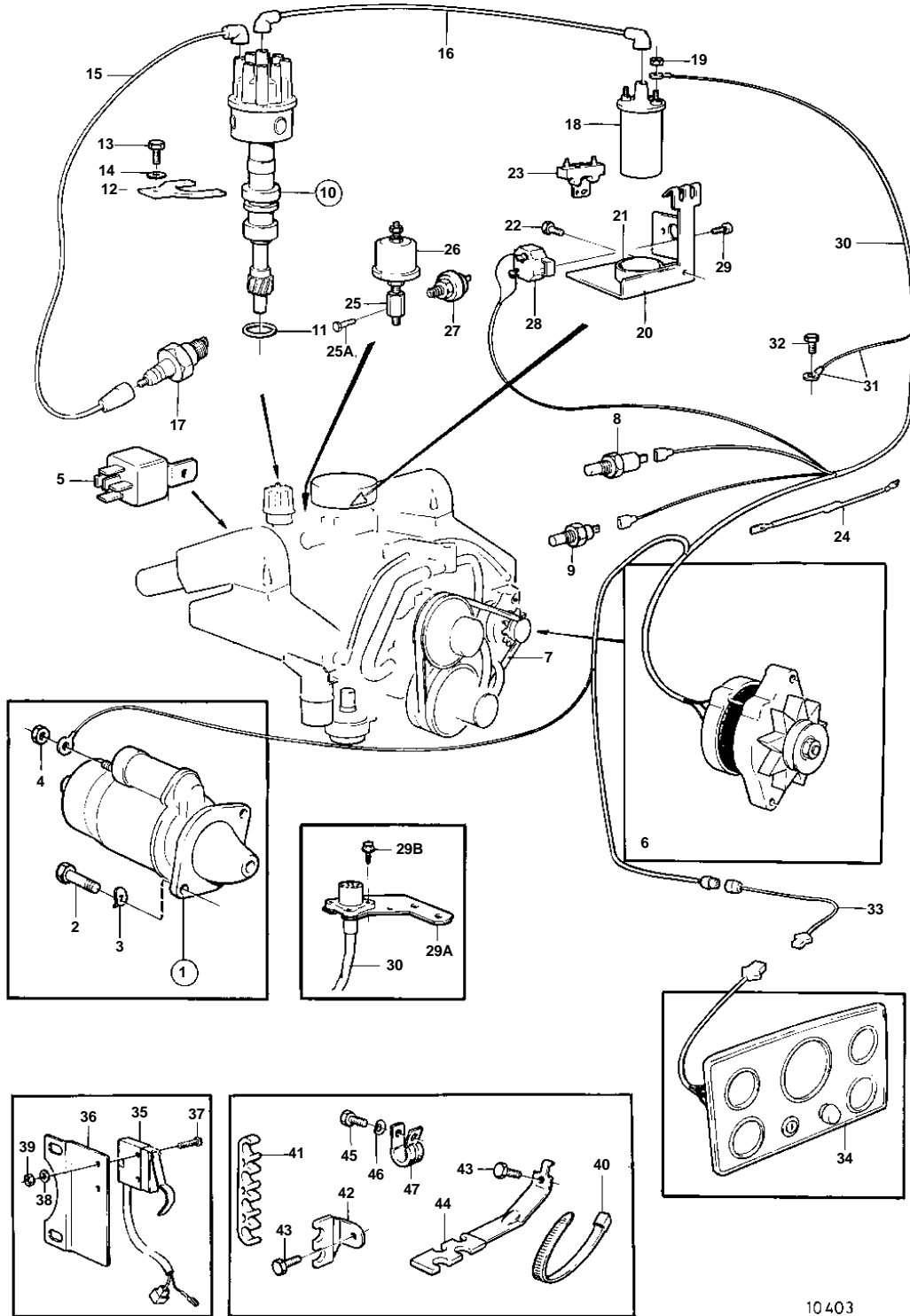


501A/MS4



10403

501A/MS4

REF	PART NO.	QTY	DESCRIPTION	SEE SEC.	NOTES
1	855334	1	Starter motor		ALSO AVAILABLE AS AN EXCHANGE PART.
		X	· COMPONENTS NOT SPEC.		
2	940134	2	Hexagon screw		
3	941909	2	Spring washer		
4	855330	1	Nut		
5	841177	1	Relay		
6		1	ALTERNATOR WITH INSTALLATION COMPONENTS	19750	
7	966857	1	V-belt		
8	835630	1	Temperature sensor		SEE GROUP 2B
	835649	1	Sensor		FOR FLY BRIDGE., SEE GROUP 9
9	841890	1	Switch		SEE GROUP 2A
	835649	1	Sensor		FOR FLY BRIDGE., SEE GROUP 9
10	856794	1	Distributor		501A/MS4
				19751	
11	835154	1	Gasket		
12	841530	1	Retainer		
13	855824	1	Screw		
14	941744	1	Washer		
15	856771	X	Ignition cable		ALL IGNITION CABLES PARTNO 856771 WHICH ARE 1000MM AND SHOULD BE CUT OFF IN SUITABLE LENGTHS., L = 1000 MM
16	856771	X	Ignition cable		ALL IGNITION CABLES PARTNO 856771 WHICH ARE 1000MM AND SHOULD BE CUT OFF IN SUITABLE LENGTHS., L = 1000 MM
17	876047	2	Spark plug kit		
18	855706	1	Ignition coil		
19		2	Nut		
20		1	BRACKET		SEE GROUP 2D
21	1219561	1	Clamp		
22		1	Screw		
23	835999	1	Series resistance		
24	834784	1	Resistor		
25		1	Nipple		
25A	16325	1	Plug		
26	834920	1	Oil pressure sensor		
	834921	1	Oil pressure sensor		FOR FLY BRIDGE.
27	841599	1	Pressure monitor		
28	841178	1	Automatic fuse		40A
29	950013	2	Cross recessed screw		
29A	856762	1	Bracket		
29B		4	Hexagon screw		
30	856727	1	Wiring harness		
31		X	· CABLES AND TERMINALS	19757	
32	943629	1	Flange screw		(841426)
33		X	Extension cable/verl		L = 3000 MM
	856882	X	Extension cable/verl		L = 6000 MM
34		1	Instrument panel		USA, EARLY TYPE
				19754	
		1	Instrument panel		EUR, EARLY TYPE
				19755	
	856820	1	Instrument panel		LATE TYPE
				19756	
35		1	Switch		
36		1	Bracket		
37	956050	2	Cross recessed screw		
38	955890	2	Washer		
39	955778	2	Hexagon nut		
40	948210	X	Cable tie		
41		2	Retainer		
42		2	Retainer		
43	955511	3	Hexagon screw		(835369)
44	835427	2	Retainer		

