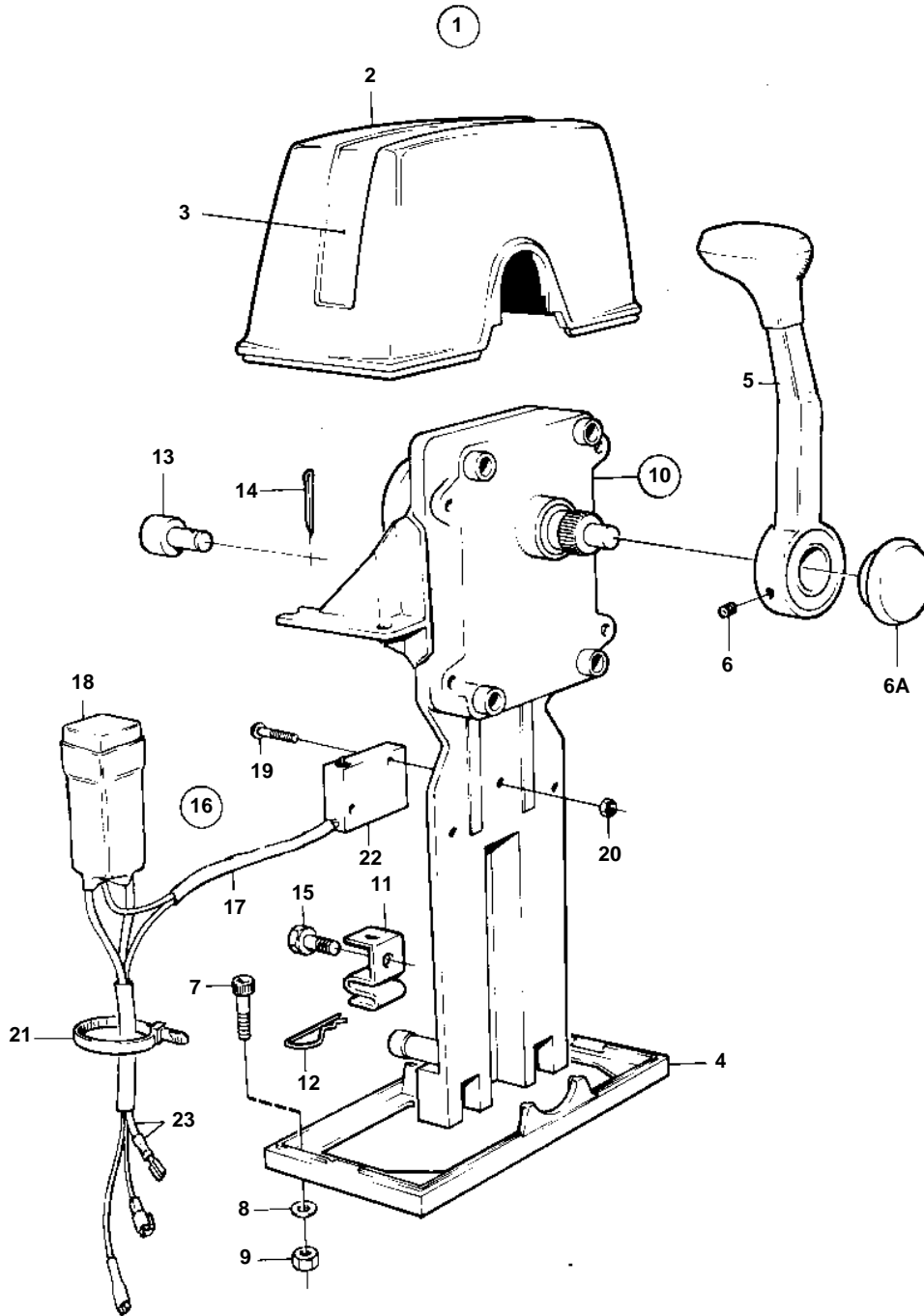


COMMON



7602

COMMON

| REF | PART NO. | QTY | DESCRIPTION | NOTES |
|-----|----------|-----|----------------------|-------------|
| 1 | 851603 | 1 | Mounting kit | TWIN |
| 2 | 839477 | 1 | · Cover | |
| 3 | 851004 | 1 | · Decal | |
| 4 | 839479 | 1 | · Plate | |
| 5 | 852348 | 2 | · Lever | |
| 6A | 853004 | | · Push button | |
| 6 | 839693 | 2 | · Lock screw | |
| 7 | 947671 | 4 | · Allen head screw | |
| 8 | 960138 | 4 | · Washer | |
| 9 | 955780 | 4 | · Nut | |
| 10 | 851600 | 2 | Control | |
| 11 | 853423 | 2 | · Retainer | |
| 12 | 852924 | 2 | · Clip | |
| 13 | 839638 | 2 | · Cube | |
| 14 | 17253 | 2 | · Cotter pin | |
| 15 | 839664 | 2 | Screw | |
| 16 | 855352 | 2 | Neutral posit contac | (839641) |
| 17 | 839619 | 2 | · Cable kit | |
| 18 | 876037 | 2 | · Relay kit | (1501832) |
| 19 | 946177 | 4 | · Screw | |
| 20 | 947536 | 4 | · Nut | |
| 21 | 948210 | X | · Strip clamp | |
| 22 | 850200 | 2 | · Switch | |
| 23 | | X | CABLES AND TERMINALS | SEE GROUP 3 |