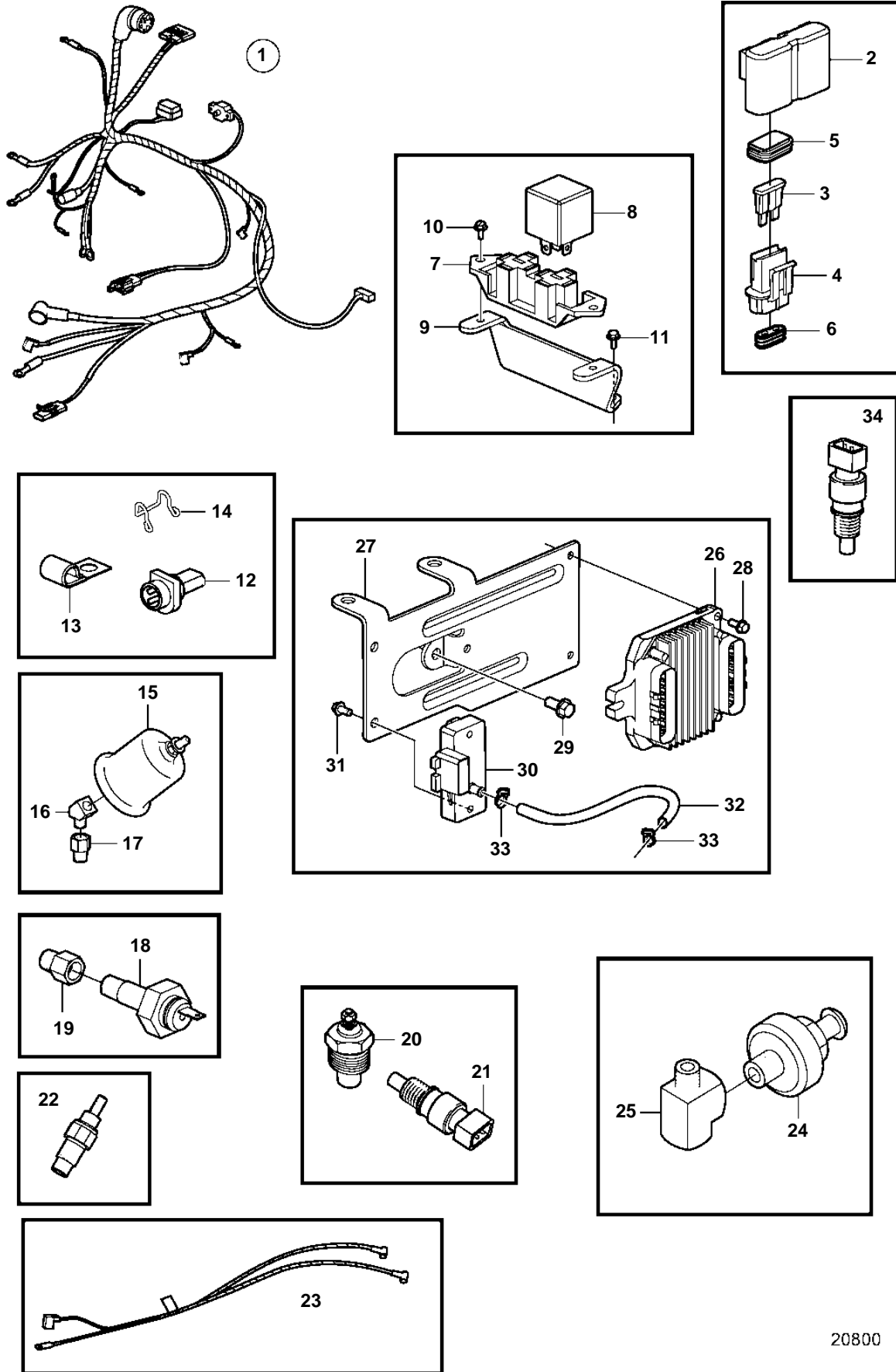


5.7GiI-A



20800

5.7GiI-A

REF	PART NO.	QTY	DESCRIPTION	NOTES
1	3861211	1	Cable harness	
2	3860455	3	· Fuse holder	
3	979686	2	· Fuse	40A
	968547	2	· Fuse	20A
	966329	2	· Fuse	15A
4	8166029	6	· Connector	
5		6	· · Seal	
6		6	· · Seal	
7	3852210	1	· Bracket	
8	3857533	2	· Relay	FUEL PUMP
9	3860370	1	Bracket	
10	3852208	2	Screw	
11	3852053	2	Screw	
12	3855178	1	Connector	
13	3852434	1	Clamp, J	D=.750" (19.0mm)
	3852092	1	Clamp, J	D=.500" (12.7mm)
14	3852237	2	Retainer	
15	3857532	1	Sender, oil pressure	
	872064	X	Sender, oil pressure	DUAL STATION
16	3852503	1	Elbow	
17	3855776	1	Adapter	
18	3852215	1	Switch, oil pressure	
19	3850660	1	Fitting	
20	3852029	1	Sender, coolant water temp.	
	872068	X	Sender, coolant water temp.	DUAL STATION
21	3850397	1	Switch, coolant water temp.	
22	3861997	2	Temperature sensor	
23	3862221	1	Cable harness	EXHAUST SENSOR
24	3854905	1	Sensor, knock	
25	3850490	1	Fitting	
26	3858888	1	Ecu	
27	3857815	1	Bracket	
28	3852053	3	Screw	
29	3853398	1	Screw	
30	3850396	1	Sensor, MAP	
31	3852115	2	Screw	
32	3854903	1	Hose	
33	3852529	2	Clamp	
34	3854527	1	Sensor, MAT	