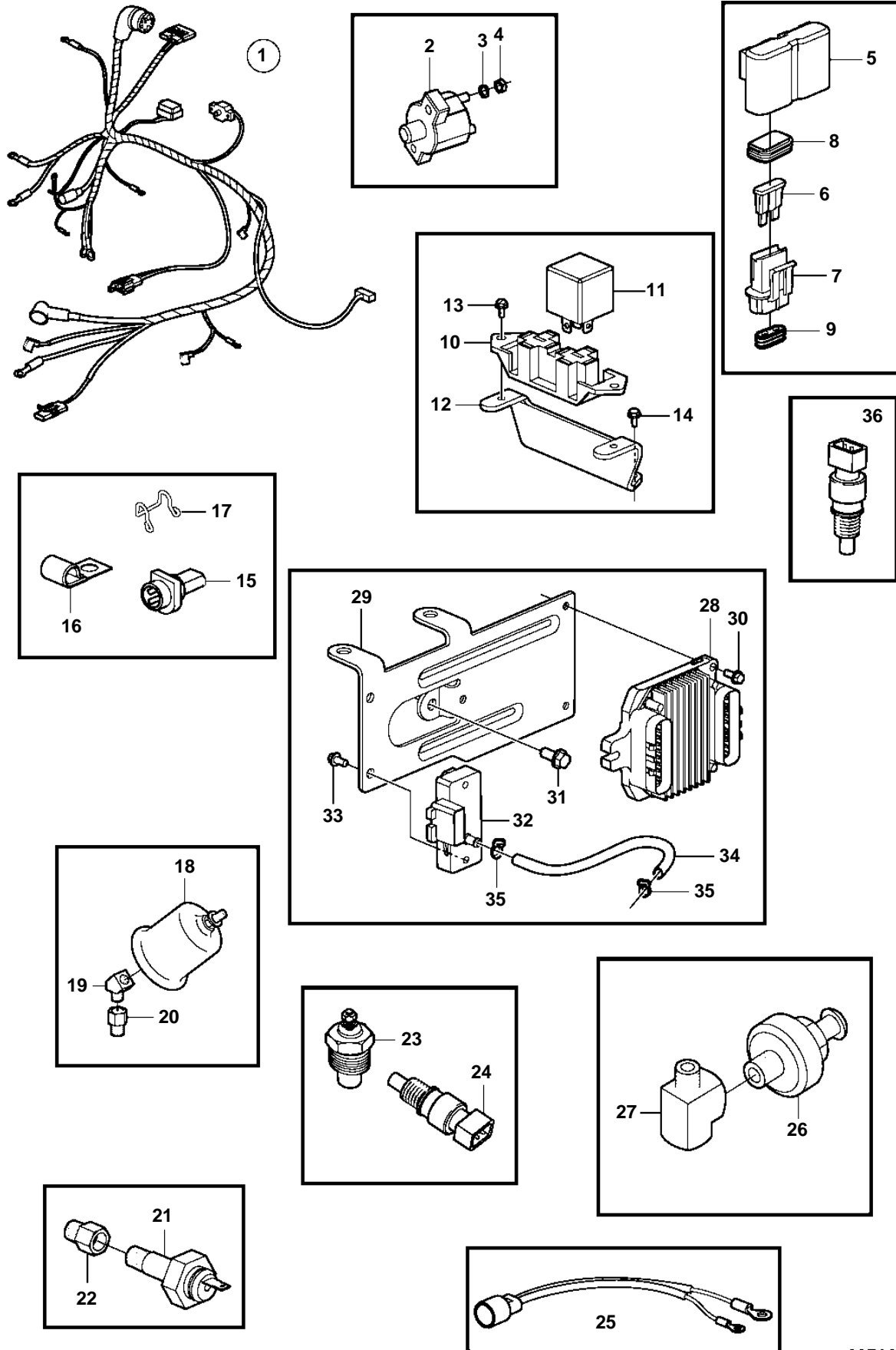


5.7GXi-A



5.7GXi-A

REF	PART NO.	QTY	DESCRIPTION	NOTES
1	3860041	1	Wiring harness	
2	3854164	1	· Breaker	50A
3	3852001	2	· Lock washer	
4	3852064	2	· Nut	
5	3860455	3	· Fuse holder	
6	979686	2	· Fuse	40A
	968547	2	· Fuse	20A
	966329	2	· Fuse	15A
7	8166029	6	· Connector	
8		6	· · Seal	
9		6	· · Seal	
10	3852210	1	· Bracket	
11	3857533	2	· Relay	FUEL PUMP
12	3860370	1	Bracket	
13	3852208	2	Screw	
14	3852053	2	Screw	
15	3855178	1	Connector	
16	3852434	1	Clamp, J	D=.750" (19.0mm)
	3852092	1	Clamp, J	D=.500" (12.7mm)
17	3852237	2	Retainer	
18	3857532	1	Sender, oil pressure	
	872064	X	Sender, oil pressure	DUAL STATION
19	3852503	1	Elbow	
20	3855776	1	Adapter	
21	3852215	1	Switch, oil pressure	
22	3850660	1	Fitting	
23	3852029	1	Sender, coolant water temp.	
	872068	X	Sender, coolant water temp.	DUAL STATION
24	3850397	1	Switch, coolant water temp.	
25	3854031	1	Cable harness, trim	
26	3854905	1	Sensor, knock	
27	3850490	1	Fitting	
28	3861215	1	Ecu	
29	3857815	1	Bracket	
30	3852053	3	Screw	
31	3853398	1	Screw	
32	3850396	1	Sensor, MAP	
33	3852115	2	Screw	
34	3854903	1	Hose	
35	3852529	2	Clamp	
36	3854527	1	Sensor, MAT	