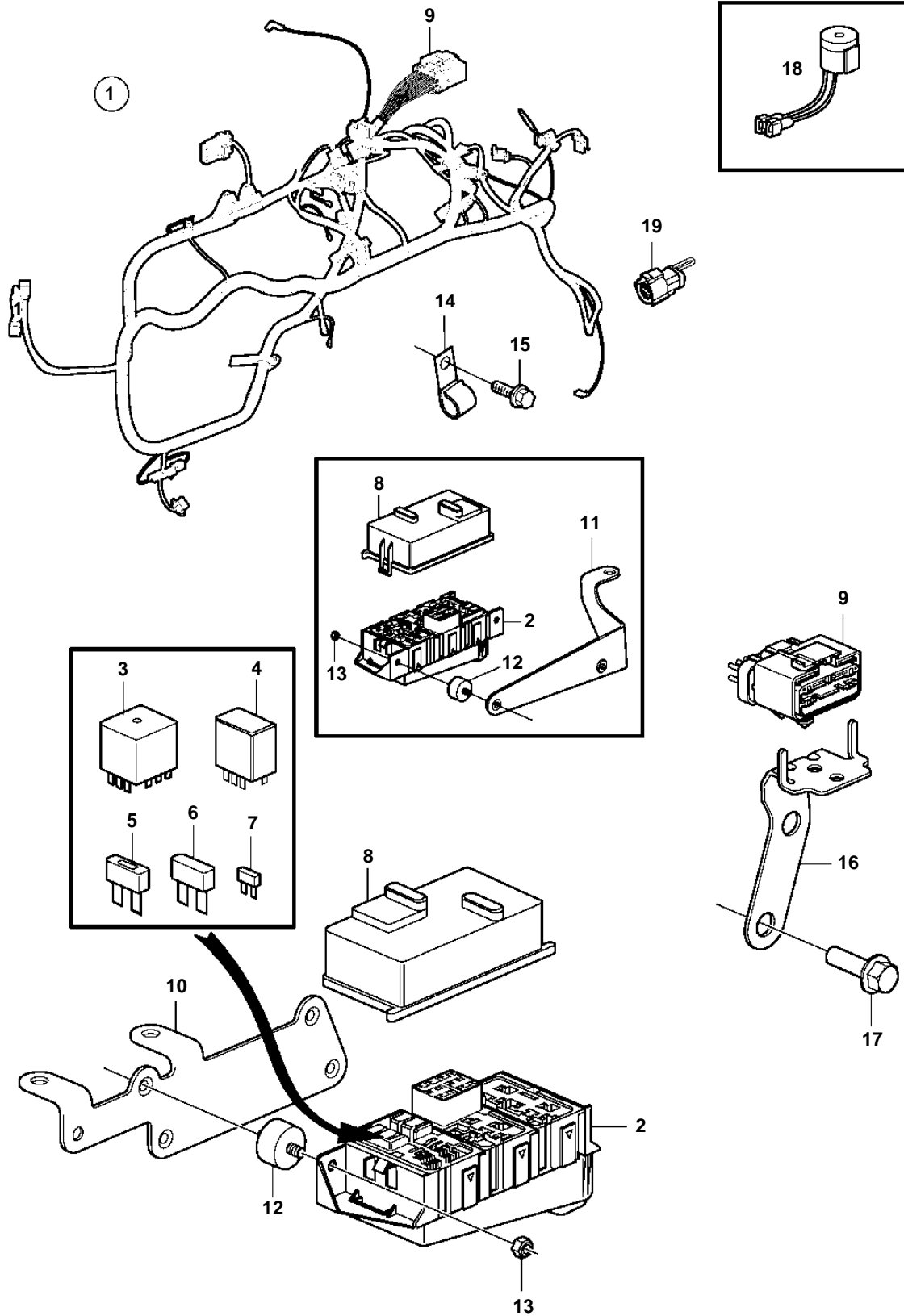


5.7GiI-G, 5.7GXii-H



5.7Giil-G, 5.7GXil-H

REF	PART NO.	QTY	DESCRIPTION	NOTES
1	3884254	1	Wiring harness	
2		1	· Fuse box	not sold separately
3	3858809	1	· Relay	
4	3841366	2	· Relay	
5	3841369	1	· Fuse	50A
6	3841370	1	· Fuse	20A
	3841371	1	· Fuse	40A
7	3841373	1	· Fuse	5A
	3863403	1	· Fuse	7.5A
	3841372	1	· Fuse	10A
	3861373	1	· Fuse	15A
	3861374	1	· Fuse	20A
8		1	· Cover plate	not sold separately
9		1	· Connector, 14 pin	not sold separately
10	3843887	1	Bracket	
11	3819660	1	Bracket	Used on V-drives with freshwater cooling.
12	3840402	2	Mounting base	
13	3852118	2	Nut	
14	3852146	2	Clamp, J	D=.375" (9.5mm)
	3852434	1	Clamp, J	D=.750" (19.0mm)
	3852490	1	Clamp	D=1.44"(36mm)
15	3853557	1	Screw	
16	3884234	1	Bracket	
17	3853557	2	Screw	
18	3817974	1	Alarm	Mounted at the helm.
19	3842396	1	Plug	For dual stations.