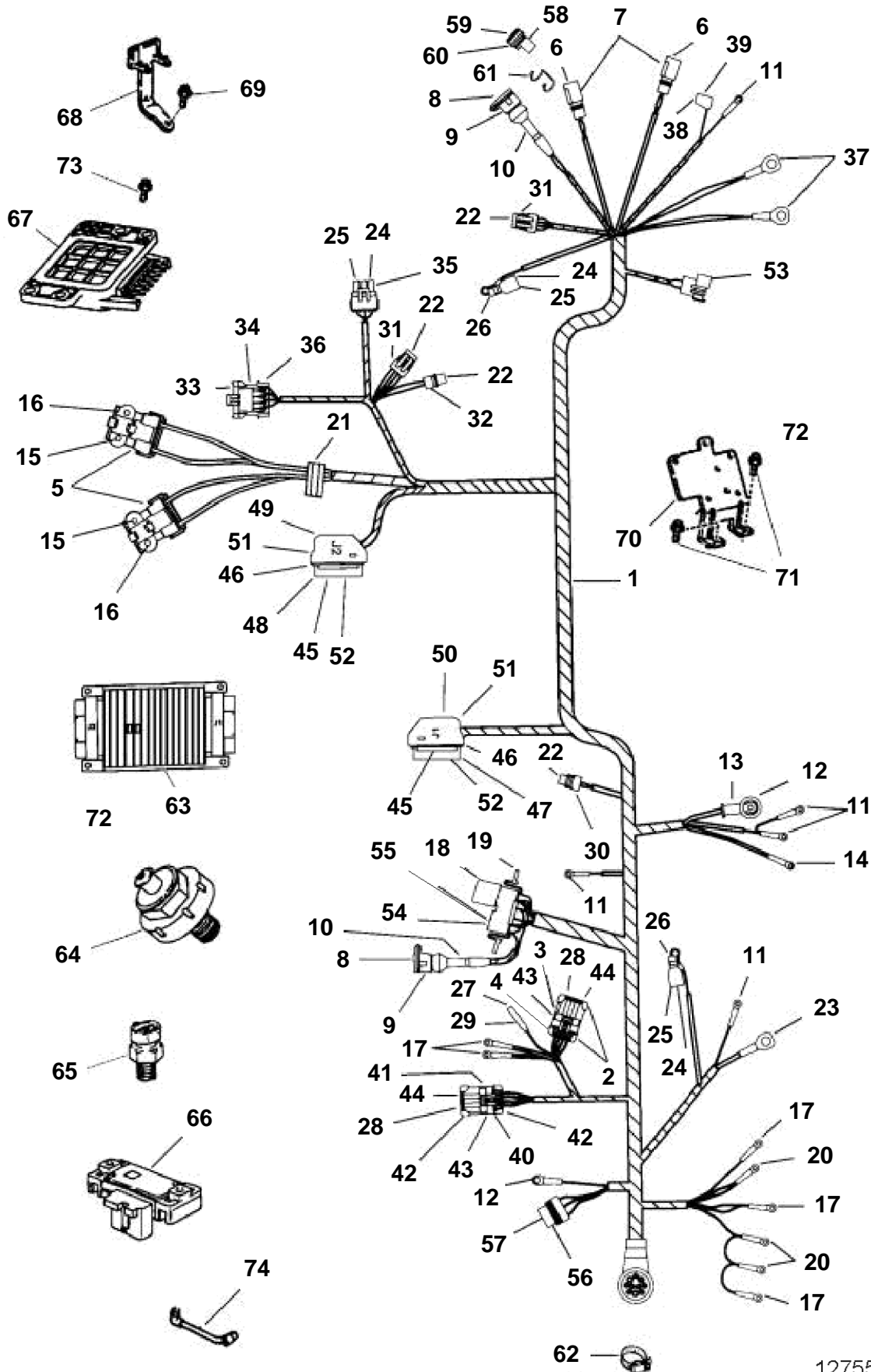


5.7GLIPLKDCE, 5.7GIPLKDCE, 5.7GIPLKECE, 5.7GSICPLKD, 5.7GSIPLKDCE, 5.7GSIPLKE



5.7GLIPLKDCE, 5.7GIPLKDCE, 5.7GIPLKECE, 5.7GSICPLKD, 5.7GSIPLKDCE, 5.7GSIPLKE

REF	PART NO.	QTY	DESCRIPTION	NOTES
1	3855929	1	Wiring harness, Engine	
2		2	Cardboard tube, 4-pin connector	
3		1	Connector, 4-pin	
4	3855239	1	Connector, 4-pin	
5	3855250	2	Connector, Injector	
6	3852229	4	Terminal, Pin	
7	3853565	2	Connector, 2-pin	
8	3853679	4	Terminal	
9	3855021	2	Connector housing	
10	3853681	2	Trunk, Fuel pump	
11	3852233	5	Terminal	
12	3852107	2	Terminal	
13	3852130	1	Rubber cap, Alternator	
14	3852036	1	Terminal, Alternator ground	
15	3855237	4	Terminal, Injector	
16	3855238	4	Sealing, Injector	
17		5	Terminal	
18	3850403	2	Relay, Fuel pump	
19	3852210	1	Bracket, Relay	
20		3	Terminal	
21		1	Grommet	
22	3855242	13	Terminal	
23		1	Terminal, Starter	
24	3855023	3	Terminal, Sensor	
25	3853478	8	Sealing, Terminal	
26	3853480	1	Terminal casing, Knock sensor	
27	3855024	1	Terminal, Ignition cutoff	
28	3855243	9	Sealing, Connector	
29	3855025	1	Cable sleeve, Terminal	
30	3855244	1	Connector, Temperature switch	
31	3855027	2	Terminal, 4-terminal	
32	3855245	1	Connector, 3-terminal	
33	3855246	1	Terminal, Spark control	
34	3855247	1	Connector, Spark control	
35	3855248	1	Connector, MAP sensor	
36	3855249	1	Connector, 5-pin connector	
37	3852527	2	Terminal, Ground	
38	3852084	1	Terminal, Oil switch	
39	3853320	1	Cardboard tube, Terminal	
40	3855251	1	Connector	
41	3855252	1	Connector	
42	3855253	2	Cardboard tube, Connector	
43	3855267	9	Terminal	
44	3855254	19	Plug	
45	3855255	2	Connector, Connector	
46	3855256	2	Sealing	
47	3855257	1	Connector, Connector, J1 module	
48	3855258	1	Connector, Connector, J2 module	
49	3855259	1	Connector housing, J2 module	
50	3855260	1	Connector housing, J1 module	
51	3855261	28	Plug	
52	3855262	36	Terminal	
53	3854244	1	Cable, Ignition coil	
54	3852246	5	Terminal, Relay	
55	3852247	3	Terminal, Relay	
56	3854192	1	Relay	
57	3852254	4	Terminal, Starter solenoid	
58	3855178	1	Connector, Master/slave	
59	3852230	2	Plug	
60	3853564	1	Connector	
61	3852237	1	Retainer, Connector	
62	3853786	1	Hose clamp, Instrument cable	
63	3856896	1	Engine control modul, Electronic control	Gi

5.7GLIPLKDCE, 5.7GIPLKDCE, 5.7GIPLKECE, 5.7GSICPLKD, 5.7GSIPLKDCE, 5.7GSIPLKE

REF	PART NO.	QTY	DESCRIPTION	NOTES
63	3856868	1	Engine control modul, Electronic control	GLi
	3856511	1	Engine control modul, Electronic control	GSi
64	3850357	1	Knock sensor	
65	3850397	1	Switch	
66	3850396	1	Sensor	
67	3850356	1	Module	
68		1	Bracket, Knock module	
69	3852115	2	Screw, Knock module bracket	
70	3851990	1	Bracket, ECM and MAP sensor	
71	3852115	2	Screw, MAP sensor bracket	
72	3855578	4	Screw, ECM to bracket	
73	3852115	4	Screw, Knock module to bracket	
74	3850688	4	Hose, MAP sensor	