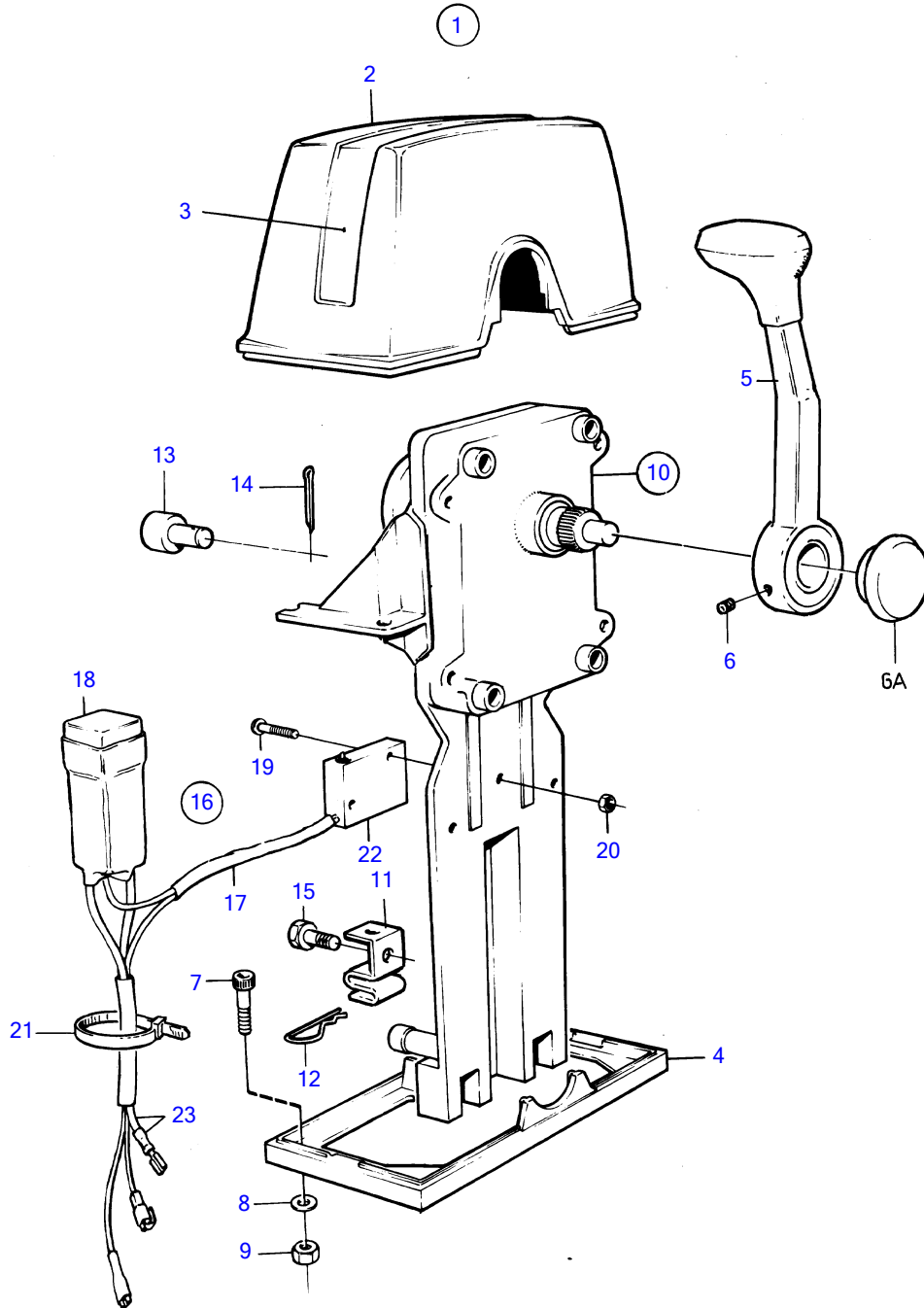


430A, 430B, 431A, 431B, 432A, 434A, 500B, 501B, 570A, 572A, 740B, DP-A, DP-A1, DP-A2, DP-C, DP-C1, DP-C1 1.95, DP-C1 2.30, DP-D, DP-D1, DP-D1 1.68, DP-D1 1.78, DP-D1 1.95, DP-D1 2.30, SP-A, SP-A1, SP-A2, SP-C, SP-C1



7602

430A, 430B, 431A, 431B, 432A, 434A, 500B, 501B, 570A, 572A, 740B, DP-A, DP-A1, DP-A2, DP-C, DP-C1, DP-C1 1.95, DP-C1 2.30, DP-D, DP-D1, DP-D1 1.68, DP-D1 1.78, DP-D1 1.95, DP-D1 2.30, SP-A, SP-A1, SP-A2, SP-C, SP-C1

REF	PART NO.	QTY	DESCRIPTION	SEE SEC.	NOTES
1	851603	1	Mounting kit		Twin
2	839477	1	• Cover		
3		1	• Decal		
4	839479	1	• Plate		
5		2	• Lever		
6	839693	2	Lock screw		
7	947671	4	Hex. socket screw		
8	960138	4	Washer		
9	955780	4	Hexagon nut		
10	851600	2	Control		
11	853423	2	• Retainer		
12	852924	2	• Clip		
13	839638	2	• Cube		
14	17253	2	• Split pin		
15	839664	2	Screw		
16	855352	2	Neutral position con Bulletin P-44-5-22	P-44-5-22-EN	(839641) Launch of new sailboat control
17	(839619)	2	• Cable kit		Obsolete part
18	876037	2	• Relay kit		(1501832)
19	946177	4	• Cross recessed screw		
20	947536	4	• Hexagon nut		
21	948210	X	• Cable tie		
22	850200	2	• Toggle switch		
23		X	cables and terminals		See group 3