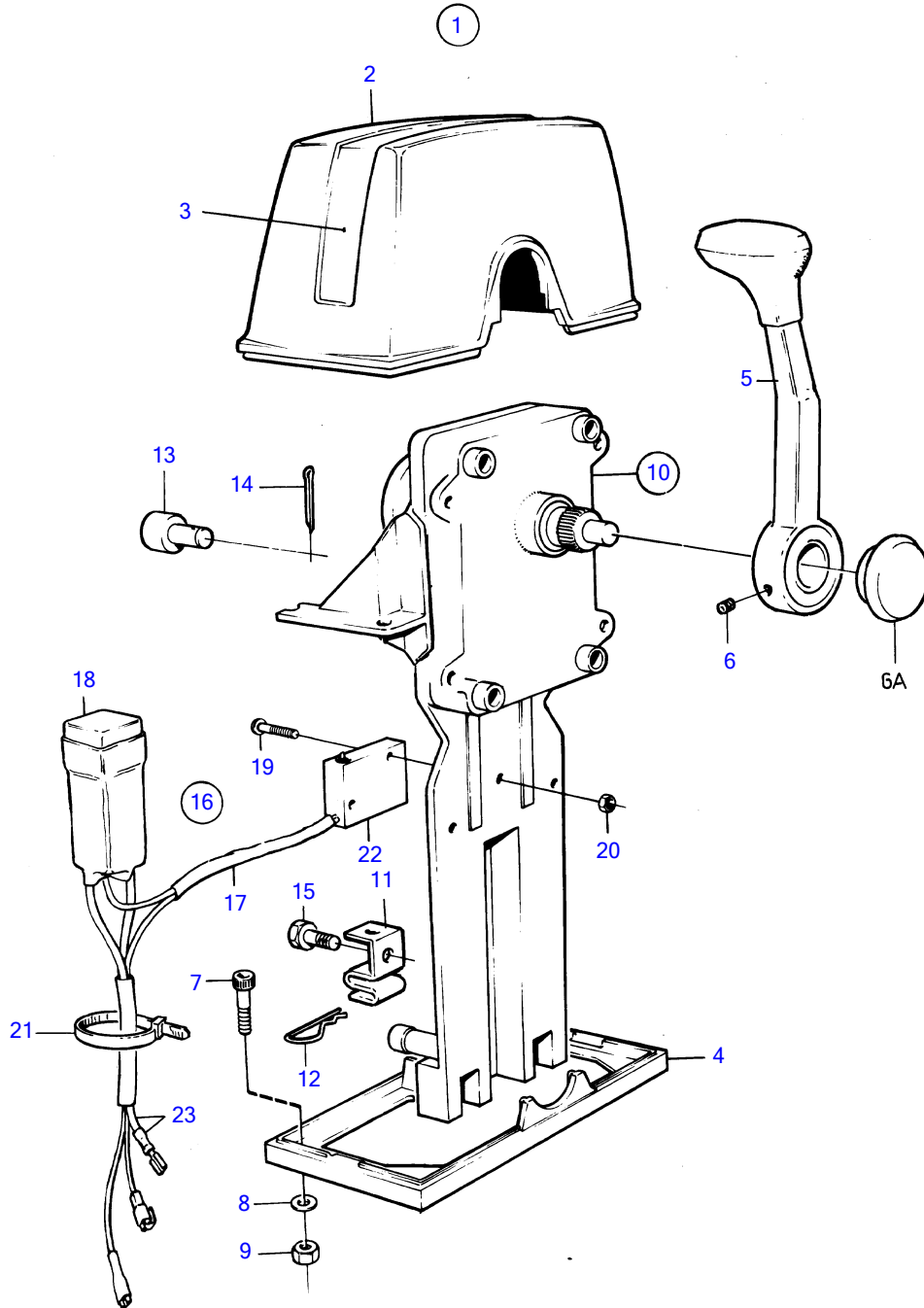


430A, 430B, 431A, 431B, 432A, 434A, 500B, 501B, 570A, 572A, 740B, DP-A, DP-A1, DP-A2, DP-C, DP-C1, DP-C1 1.95, DP-C1 2.30, DP-D, DP-D1, DP-D1 1.68, DP-D1 1.78, DP-D1 1.95, DP-D1 2.30, SP-A, SP-A1, SP-A2, SP-C, SP-C1



7602

430A, 430B, 431A, 431B, 432A, 434A, 500B, 501B, 570A, 572A, 740B, DP-A, DP-A1, DP-A2, DP-C, DP-C1, DP-C1 1.95, DP-C1 2.30, DP-D, DP-D1, DP-D1 1.68, DP-D1 1.78, DP-D1 1.95, DP-D1 2.30, SP-A, SP-A1, SP-A2, SP-C, SP-C1

REF	PART NO.	QTY	DESCRIPTION	SEE SEC.	NOTES
1	851602	1	Mounting kit		Single
2	839472	1	• Cover		
3		1	• Decal		
4	839474	1	• Plate		
5		1	• Lever		
6A	853004		Push button		
6	839693	1	• Lock screw		
7	947671	4	• Hex. socket screw		
8	960138	4	• Washer		
9	955780	4	• Hexagon nut		
10	851600	1	Control		
11	853423	1	• Retainer		
12	852924	1	• Clip		
13	839638	1	• Cube		
14	17253	1	• Split pin		
15	839664	1	Screw		
16	855352	1	Neutral position con		(839641)
			Bulletin P-44-5-22	P-44-5-22-EN	Launch of new sailboat control
17	(839619)	1	• Cable kit		Obsolete part
18	876037	1	• Relay kit		(1501832)
19	946177	2	• Cross recessed screw		
20	947536	2	• Hexagon nut		
21	948210	X	• Cable tie		
22	850200	1	• Toggle switch		
23		X	cables and terminals		See group 3