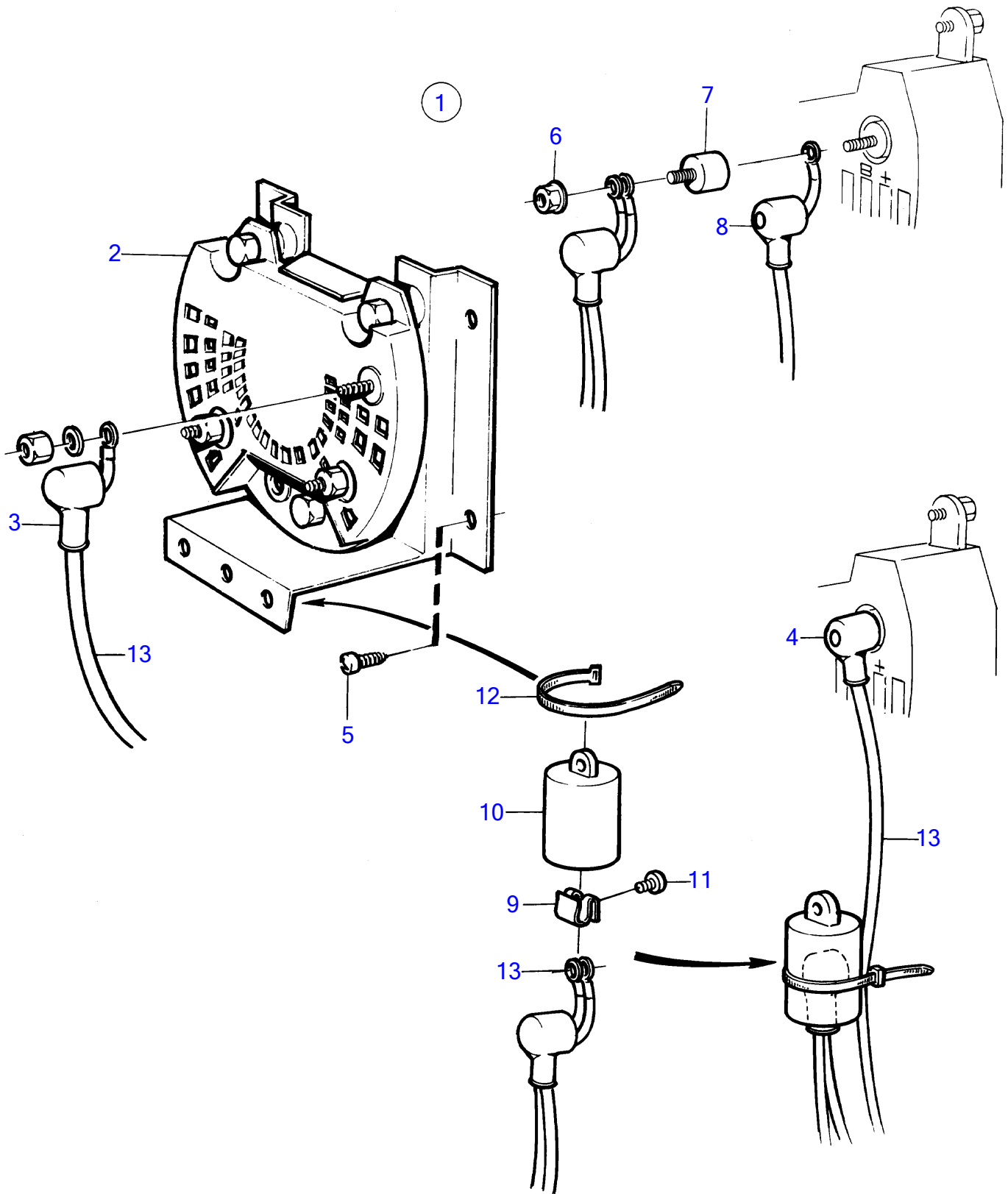


430A, 430B, 431A, 431B, 432A, 434A, 500B, 501B, 570A, 572A, 740B, DP-A, DP-A1, DP-A2, DP-C, DP-C1, DP-C1 1.95, DP-C1 2.30, DP-D, DP-D1, DP-D1 1.68, DP-D1 1.78, DP-D1 1.95, DP-D1 2.30, SP-A, SP-A1, SP-A2, SP-C, SP-C1



430A, 430B, 431A, 431B, 432A, 434A, 500B, 501B, 570A, 572A, 740B, DP-A, DP-A1, DP-A2, DP-C, DP-C1, DP-C1 1.95, DP-C1 2.30, DP-D, DP-D1, DP-D1 1.68, DP-D1 1.78, DP-D1 1.95, DP-D1 2.30, SP-A, SP-A1, SP-A2, SP-C, SP-C1

REF	PART NO.	QTY	DESCRIPTION	NOTES
1	858841	1	Junction block	For charging of 2 batteries., For alternator 12V, 50A., Repl by 859499
2	(858842)	1	• Junction block	Obsolete part
3	842150	3	• Protective cap	
5	828647	4	• Screw	Not included in later version of kit 858841
6	945407	2	• Flange nut	Not included in later version of kit 858841
7	862330	1	• Rubber cushion	
8	(862345)	1	• Protective cap	Obsolete part
12		X	• strip clamp	See group 3
13		X	• cables and terminals	See group 3