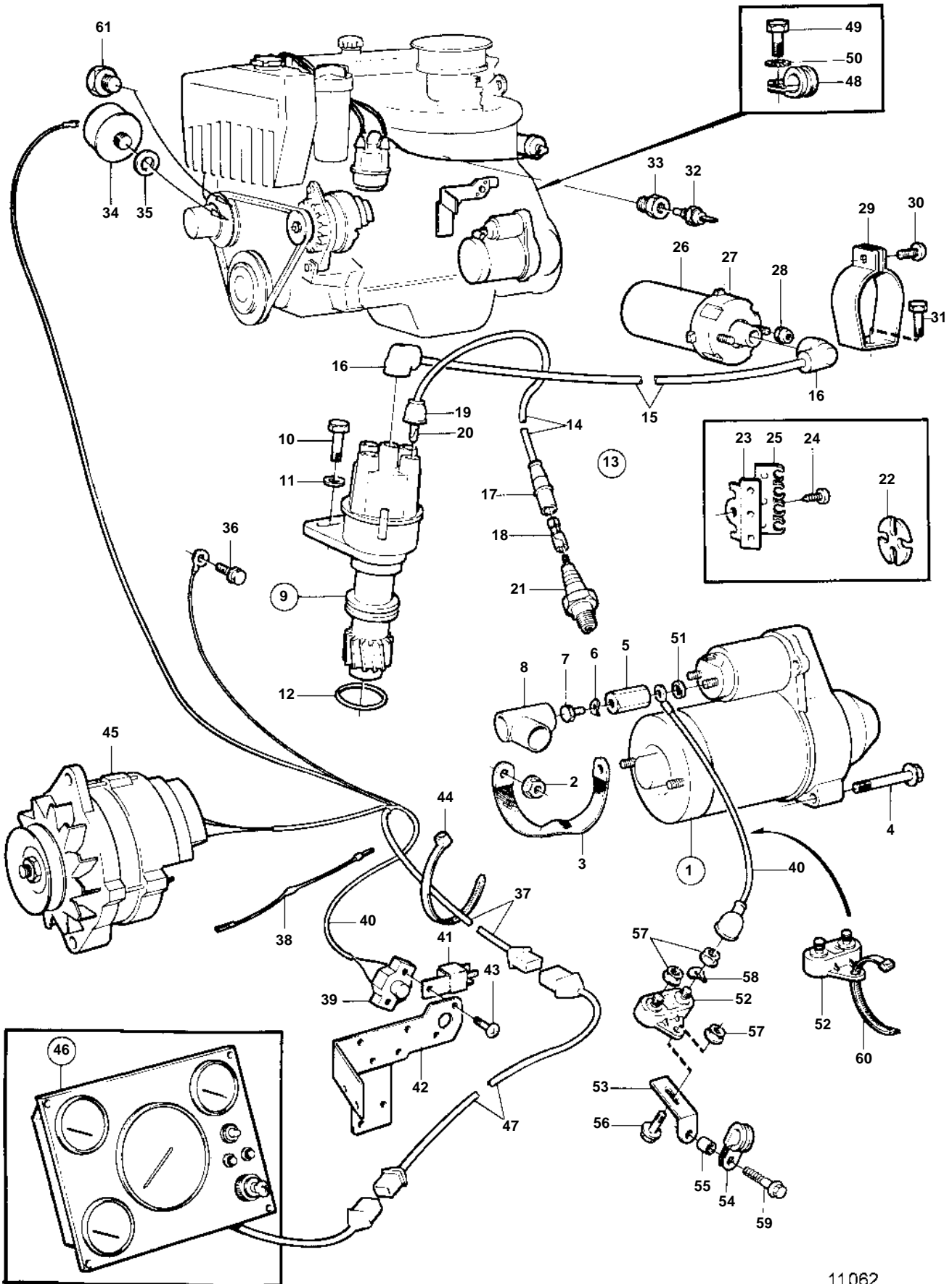


230A/SP-A/MT,230A,230B



11062

## 230A/SP-A/MT,230A,230B

REF	PART NO.	QTY	DESCRIPTION	SEE SEC.	NOTES
1	840808	1	Starter motor		REPLACED BY STARTER 859553 + GROUND CABLE 968048 + NUT 945408.. ALSO AVAILABLE AS AN EXCHANGE PART.
				030-1550	
	859553	1	Starter motor		REPL BY 872241. ALSO AVAILABLE AS AN EXCHANGE PART.
				030-1600	
2	968862	1	Nut		FOR 859553
3	968048	1	Cable		FOR 859553
4	946473	2	Flange screw		
5	855314	1	Nut		
6	941907	1	Spring washer		EARLY TYPE
7	940199	1	Screw		EARLY TYPE
8	855798	1	Protecting sleeve		
9	855712	1	Distributor		
				030-0700	
10	968885	1	Screw		
11	960141	1	Washer		
12	925065	1	O-ring	IK	
13	875571	1	Ignition cable kit		
14		4	· IGNITION CABLE	IK	
15		1	· IGNITION CABLE	IK	
16	464716	2	· Suppressor resistor	IK	
17	1219692	4	· Suppressor resistor	IK	
18	1219691	4	· Cable terminal	IK	
19	241608	4	· Protective sleeve	IK	
20	954513	4	· Cable terminal	IK	
21	875820	1	Spark plug kit		
22	1219071	2	Retainer		
23	834458	1	Retainer		
24	965175	1	Screw		
25	463857	1	Retainer		
26	834462	1	Ignition coil		
27	855704	1	Protecting casing		
28	946577	2	Lock nut		
29	834696	1	Clamp		
30	834371	1	Screw		
31	946640	1	Cable terminal		(955523)
32	834629	1	Temperature sensor		REPL BY 872069
	872069	1	Temperature sensor		TO CONNECT TERMINAL ON TEMPERATURE 872069 USE NUT 965483 OR 955780.
33	834621	1	Nipple		
34	3857532	1	Sender		(834920)
35	969011	1	Gasket		(947621)
36	968854	1	Flange screw		(965175)
37	855331	1	Cable harness		
38	834784	1	Resistor		
39	841178	1	Fuse		
40		X	CABLE AND CABLE TERMINALS	030-2235	
41	841177	1	Relay		
42	855268	1	Bracket		SEE GROUP 2D
43	950013	2	Screw		
44	948210	X	Strip clamp		
45		1	ALTERNATOR AND INSTALLATION COMPONENTS	030-0900	
46	856672	1	Instrument panel		USA, EARLY TYPE

230A/SP-A/MT,230A,230B

REF	PART NO.	QTY	DESCRIPTION	SEE SEC.	NOTES
46				030-2125	
	856015	1	Instrument panel		REPL BY 856674
				030-2126	
	856674	1	Instrument panel		EARLY TYPE
				030-2126	
	856820	1	Instrument panel		LATE TYPE
				030-2130	
47	835671	X	Cable trunk		L = 3000 MM
	835670	X	Cable trunk		L = 6100 MM
48	949786	1	Clamp		
49	946440	1	Flange screw		(955523)
51	829714	1	Seal		EARLY TYPE
52	856355	2	Fuse		55A
53	965570	1	Bracket		
54	941950	1	Clamp		
56	946544	1	Flange screw		
57	945407	3	Flange nut		
58	941906	1	Spring washer		
59	946173	1	Flange screw		EARLY TYPE, L = 20 MM
60	948210	1	Strip clamp		
61	960630	1	Plug		