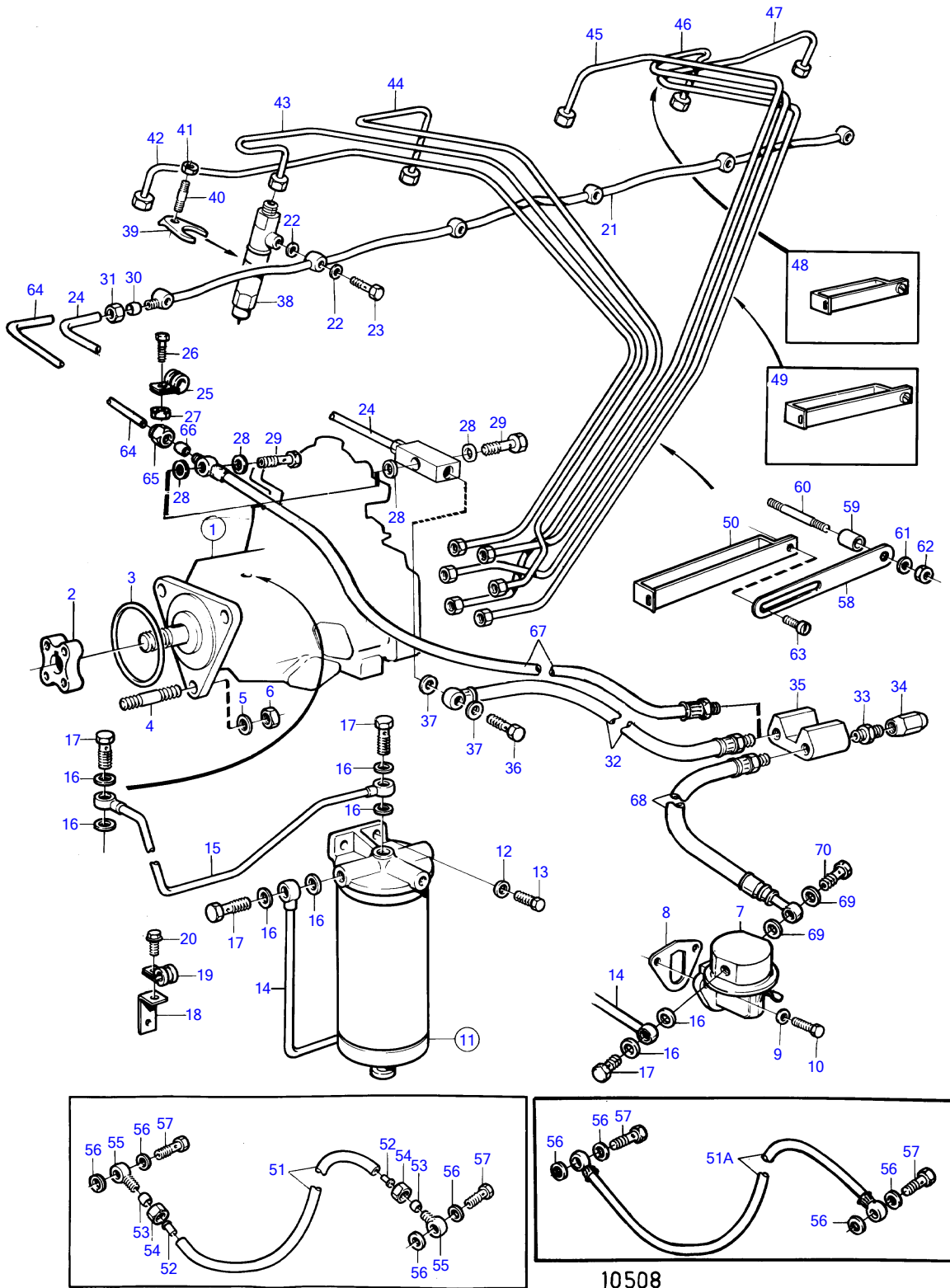


TAMD41A



TAMD41A

| REF | PART NO. | QTY | DESCRIPTION | SEE SEC. | NOTES |
|-----|----------|-----|-------------------------------------|----------|--|
| 1 | 858208 | 1 | Injection pump, fuel injection pump | | |
| | | | . | 19507 | |
| 2 | 859601 | 1 | Hub | | (838676) |
| 3 | 968971 | 1 | O-ring | | |
| 4 | 953047 | 3 | Stud | | |
| 5 | 191172 | 3 | Washer | | |
| 6 | 945408 | 3 | Flange nut | | |
| 7 | 1542170 | 1 | Fuel pump | | Replaced by fuel pump 860320 and pipe 860448, SN-2204132810 |
| | (273663) | 1 | Repair kit | | See group 10A, Obsolete part |
| | 860320 | 1 | Fuel pump | | SN2204132811- |
| 8 | 3501530 | 1 | Gasket | | |
| 9 | 941907 | 2 | Spring washer | | |
| 10 | 946173 | 2 | Flange screw | | |
| 11 | 838472 | 1 | Fuel filter | | |
| | | | . | 19505 | |
| 12 | 960148 | 2 | Washer | | See group 2D |
| 13 | 946329 | 2 | Flange screw | | See group 2D |
| 14 | 1542277 | 1 | Fuel pipe | | For 1542170 |
| | 860448 | 1 | Fuel pipe | | For 860320 |
| 15 | 838659 | 1 | Fuel pipe | | |
| 16 | 11994 | 8 | Gasket | | |
| 17 | 969299 | 4 | Hollow screw | | (74040) |
| 18 | 846780 | 1 | Bracket | | |
| 19 | 952624 | 1 | Clamp | | |
| 20 | 946544 | 1 | Flange screw | | |
| 21 | 838667 | 1 | Leak-off line | | |
| 22 | 947620 | 12 | Gasket | | |
| 23 | 74033 | 6 | Hollow screw | | |
| 24 | 838669 | 1 | Return line | | Replaced by return pipe 860021, fuel hose 860028, 2ea shear ring 956966 and 2ea plate 956980 |
| 25 | 121563 | 1 | Clamp | | |
| 26 | 946544 | 1 | Flange screw | | |
| 27 | 945407 | 1 | Flange nut | | |
| 28 | 11994 | 2 | Gasket | | |
| 29 | 844237 | 1 | Hollow screw | | Included in fuel injection pump. |
| 30 | 956966 | 1 | Ferrule | | |
| 31 | 956980 | 1 | Fitting nut | | |
| 32 | 845646 | 1 | Fuel hose | | |
| 33 | 954337 | 2 | Nipple | | |
| 34 | 954323 | 2 | Fitting nut | | |
| 35 | 829146 | 1 | Fitting | | |
| 36 | 969299 | 1 | Hollow screw | | (74040) |
| 37 | 11994 | 2 | Gasket | | |
| 38 | 838665 | 6 | Injector | | |
| | 3803231 | 6 | Injector, exch | | |
| | | | . | 19506 | |
| 39 | 840402 | 6 | Yoke | | |
| 40 | 924068 | 6 | Stud | | |
| 41 | 945408 | 6 | Flange nut | | |
| 42 | 838877 | 1 | Delivery pipe | | Cyl. no. 1 |
| 43 | 838878 | 1 | Pressure pipe | | Cyl. no. 2 |
| 44 | 838879 | 1 | Delivery pipe | | Cyl. no. 3 |
| 45 | 838880 | 1 | Pressure pipe | | Cyl. no. 4 |
| 46 | 838881 | 1 | Pressure pipe | | Cyl. no. 5 |
| 47 | 838882 | 1 | Delivery pipe | | Cyl. no. 6 |
| 48 | 470181 | 2 | Clamp | | 2-pipe |
| 49 | 470182 | 4 | Clamp | | 3-pipe |
| 50 | 470184 | 1 | Clamp | | 6-pipe |
| 51 | 945460 | 1 | Tube | | L=150mm, repl by 86013 |
| 51A | 860131 | 1 | Air vent hose | | |
| 52 | 944717 | 2 | Support sleeve | | |
| 53 | 954364 | 2 | Sleeve | | |

7745630-23-19516

10508

Upd:2011-09-27

TAMD41A

| REF | PART NO. | QTY | DESCRIPTION | SEE SEC. | NOTES |
|-----|----------|-----|---------------|----------|---------------|
| 54 | 954356 | 2 | Fitting nut | | |
| 55 | 858447 | 2 | Banjo nipple | | |
| 56 | 947620 | 4 | Gasket | | |
| 57 | 74033 | 2 | Hollow screw | | |
| 58 | 965534 | 1 | Bracket | | |
| 59 | 833244 | 1 | Spacer sleeve | | |
| 60 | 17942 | 1 | Stud | | See group 2B |
| 61 | 941907 | 1 | Spring washer | | |
| 62 | 945408 | 1 | Flange nut | | |
| 63 | | 1 | screw | | |
| 64 | 860021 | 1 | Return line | | |
| 65 | 956980 | 1 | Fitting nut | | |
| 66 | 956966 | 1 | Ferrule | | |
| 67 | (860028) | 1 | Fuel hose | | Obsolete part |
| 68 | 845646 | 1 | Fuel hose | | |
| 69 | 11994 | 2 | Gasket | | |
| 70 | 969299 | 1 | Hollow screw | | (74040) |