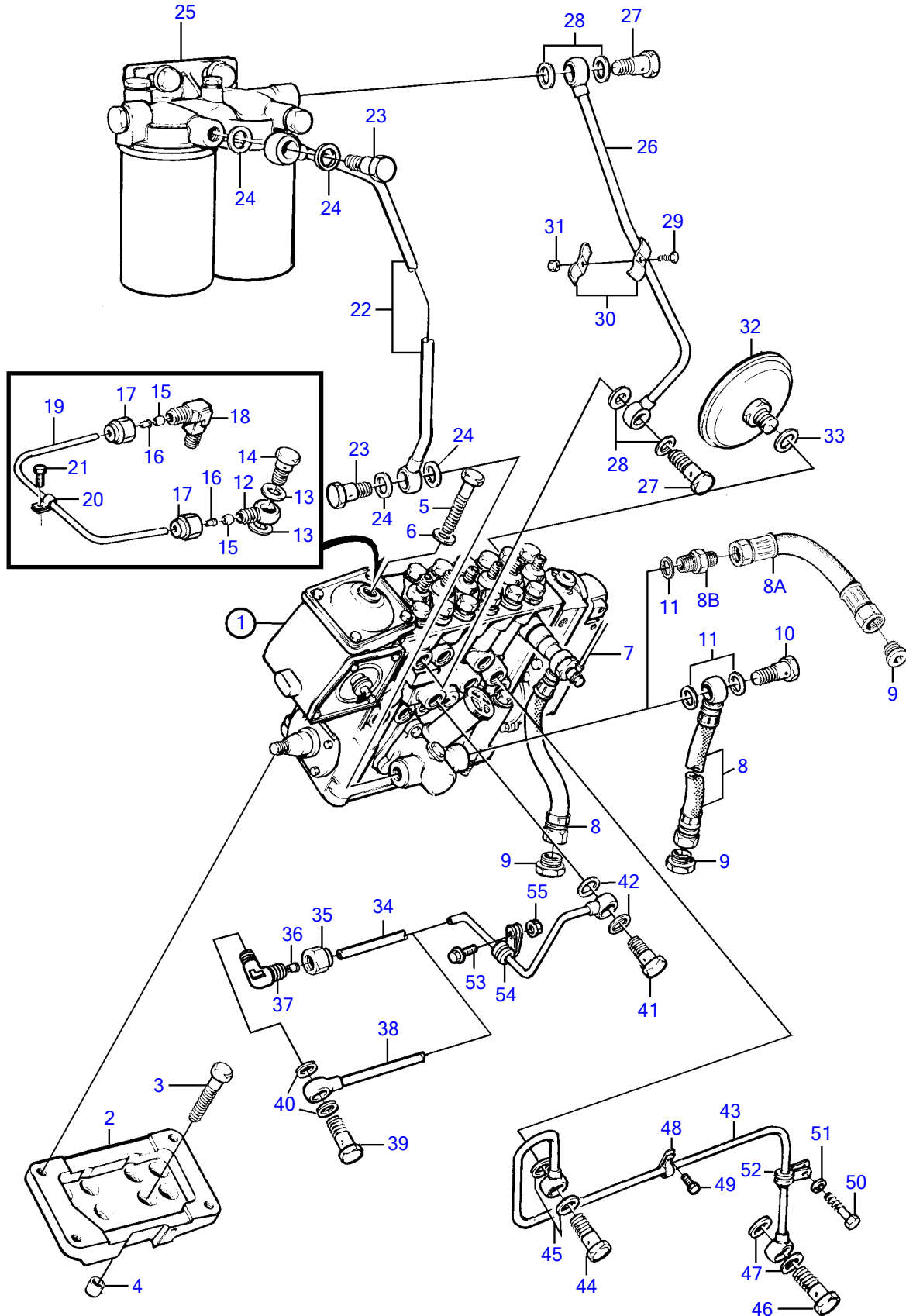


TAMD71B



17966

TAMD71B

| REF | PART NO. | QTY | DESCRIPTION | SEE SEC. | NOTES |
|-----|----------|-----|---------------------------------------|----------|---|
| 1 | 864068 | 1 | Injection pump | | |
| | 3803771 | 1 | Injection pump, exch | | |
| | | | . | | |
| | | | . | 3634 | |
| 2 | (477773) | 1 | Shelf | | (471610), Obsolete part |
| 3 | 965185 | 4 | Flange screw | | L=40mm |
| 4 | 417588 | 2 | Guide sleeve | | |
| 5 | 965189 | 4 | Flange screw | | L=90mm |
| 6 | 941908 | 4 | Spring washer | | |
| 7 | | 1 | Leak-off line, fuel hose connecting | 2098 | |
| 8 | 3830312 | X | Hose | | |
| 8A | 3830309 | 1 | Hose | | Alt |
| 8B | 977677 | 1 | Nipple | | Alt |
| 9 | 22753 | 2 | Nipple | | |
| 10 | 25167 | 1 | Hollow screw | | |
| 11 | 969011 | 2 | Gasket | | |
| 12 | 945417 | 1 | Banjo nipple | | |
| 13 | 11994 | 2 | Gasket | | |
| 14 | 969299 | 1 | Hollow screw | | |
| 15 | 954364 | 2 | Sleeve | | |
| 16 | 944717 | 2 | Support sleeve | | |
| 17 | 954356 | 2 | Fitting nut | | |
| 18 | 954385 | 1 | Elbow nipple | | |
| 19 | 945460 | X | Tube | | L=760mm |
| 20 | 940374 | 1 | Clamp | | |
| 21 | 946440 | 1 | Flange screw | | |
| 22 | 848167 | 1 | Fuel pipe | | SN-XXXXXXXXXX/52042 |
| | 3825792 | 1 | Fuel pipe | | SNXXXXXXXXXX/52043-(865264) |
| 23 | 25167 | 2 | Hollow screw | | |
| 24 | 969011 | 4 | Gasket | | |
| 25 | | 1 | Fuel filter, with installation comps. | 628 | |
| 26 | 848166 | 1 | Fuel pipe | | SN-XXXXXXXXXX/52042 |
| | 3825791 | 1 | Fuel pipe | | SNXXXXXXXXXX/52043-(865263) |
| 27 | 25167 | 2 | Hollow screw | | |
| 28 | 969011 | 4 | Gasket | | |
| 29 | 956095 | 1 | Cross recessed screw | | |
| 30 | 404279 | 2 | Attaching clamp | | |
| 31 | 955781 | 1 | Hexagon nut | | |
| 32 | 477173 | 1 | Pressure equalizer | | |
| 33 | 969011 | 1 | Gasket | | |
| 34 | 471608 | 1 | Oil pressure pipe | | SN-XXXXXXXXXX/58796 |
| 35 | 954356 | 1 | Fitting nut | | SN-XXXXXXXXXX/58796 |
| 36 | 954364 | 1 | Sleeve | | SN-XXXXXXXXXX/58796 |
| 37 | 479958 | 1 | Elbow nipple, 1/4-NPTF | | SN-XXXXXXXXXX/58796 |
| 38 | 477908 | 1 | Oil pressure pipe | | SNXXXXXXXXXX/58797-SN-XXXXXXXXXX/64646 (477906) |
| | 477986 | 1 | Oil pressure pipe | | SNXXXXXXXXXX/646647- |
| 39 | 48634 | 1 | Hollow screw, m10 | | SN-XXXXXXXXXX/64646 |
| | 969299 | 1 | Hollow screw, m12 | | SNXXXXXXXXXX/64647- |
| 40 | 947281 | 2 | Gasket | | SN-XXXXXXXXXX/64646 |
| | 11994 | 2 | Gasket | | SNXXXXXXXXXX/64647- |
| 41 | 48634 | 1 | Hollow screw | | |
| 42 | 947281 | 2 | Gasket | | |
| 43 | 3826927 | 1 | Oil return pipe | | (471609) |
| 44 | 25167 | 1 | Hollow screw | | |
| 45 | 969011 | 2 | Gasket | | |
| 46 | 25167 | 1 | Hollow screw | | |
| 47 | 969011 | 2 | Gasket | | |
| 48 | 18387 | 1 | Clamp | | |
| 49 | 944926 | 1 | Flange screw | | |

TAMD71B

| REF | PART NO. | QTY | DESCRIPTION | SEE SEC. | NOTES |
|-----|----------|-----|--------------|----------|-------|
| 50 | 946471 | 1 | Flange screw | | |
| 51 | 190509 | 1 | Washer | | |
| 52 | 942542 | 1 | Clamp | | |
| 53 | 946544 | 1 | Flange screw | | |
| 54 | 952633 | 1 | Clamp | | |
| 55 | 945407 | 1 | Flange nut | | |