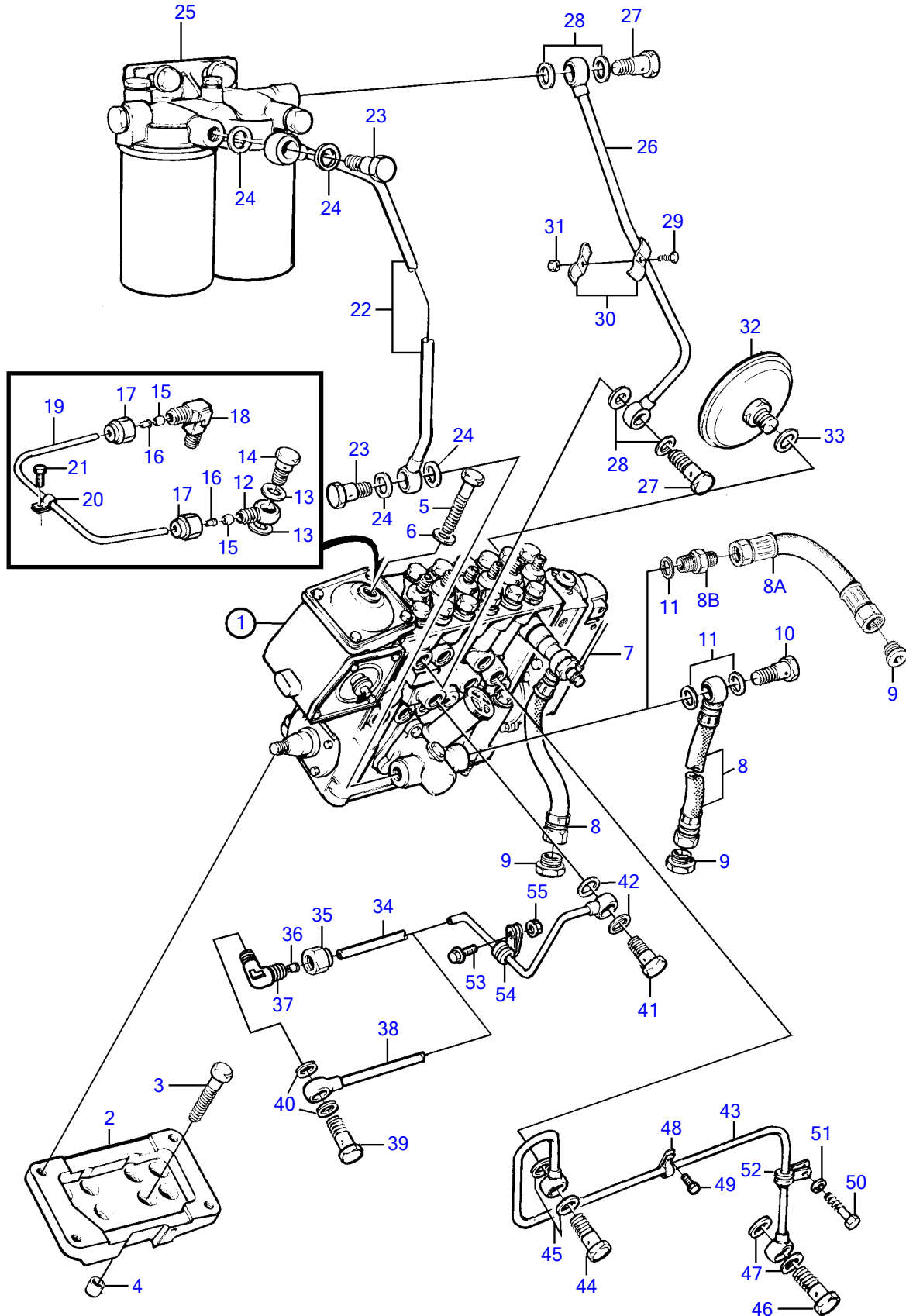


TAMD71B



17966

TAMD71B

REF	PART NO.	QTY	DESCRIPTION	SEE SEC.	NOTES
1	864068	1	Injection pump		
	3803771	1	Injection pump, exch		
			.		
			.	3634	
2	(477773)	1	Shelf		(471610), Obsolete part
3	965185	4	Flange screw		L=40mm
4	417588	2	Guide sleeve		
5	965189	4	Flange screw		L=90mm
6	941908	4	Spring washer		
7		1	Leak-off line, fuel hose connecting	2098	
8	3830312	X	Hose		
8A	3830309	1	Hose		Alt
8B	977677	1	Nipple		Alt
9	22753	2	Nipple		
10	25167	1	Hollow screw		
11	969011	2	Gasket		
12	945417	1	Banjo nipple		
13	11994	2	Gasket		
14	969299	1	Hollow screw		
15	954364	2	Sleeve		
16	944717	2	Support sleeve		
17	954356	2	Fitting nut		
18	954385	1	Elbow nipple		
19	945460	X	Tube		L=760mm
20	940374	1	Clamp		
21	946440	1	Flange screw		
22	848167	1	Fuel pipe		SN-XXXXXXXXXX/52042
	3825792	1	Fuel pipe		SNXXXXXXXXXX/52043-(865264)
23	25167	2	Hollow screw		
24	969011	4	Gasket		
25		1	Fuel filter, with installation comps.	628	
26	848166	1	Fuel pipe		SN-XXXXXXXXXX/52042
	3825791	1	Fuel pipe		SNXXXXXXXXXX/52043-(865263)
27	25167	2	Hollow screw		
28	969011	4	Gasket		
29	956095	1	Cross recessed screw		
30	404279	2	Attaching clamp		
31	955781	1	Hexagon nut		
32	477173	1	Pressure equalizer		
33	969011	1	Gasket		
34	471608	1	Oil pressure pipe		SN-XXXXXXXXXX/58796
35	954356	1	Fitting nut		SN-XXXXXXXXXX/58796
36	954364	1	Sleeve		SN-XXXXXXXXXX/58796
37	479958	1	Elbow nipple, 1/4-NPTF		SN-XXXXXXXXXX/58796
38	477908	1	Oil pressure pipe		SNXXXXXXXXXX/58797-SN-XXXXXXXXXX/64646 (477906)
	477986	1	Oil pressure pipe		SNXXXXXXXXXX/646647-
39	48634	1	Hollow screw, m10		SN-XXXXXXXXXX/64646
	969299	1	Hollow screw, m12		SNXXXXXXXXXX/64647-
40	947281	2	Gasket		SN-XXXXXXXXXX/64646
	11994	2	Gasket		SNXXXXXXXXXX/64647-
41	48634	1	Hollow screw		
42	947281	2	Gasket		
43	3826927	1	Oil return pipe		(471609)
44	25167	1	Hollow screw		
45	969011	2	Gasket		
46	25167	1	Hollow screw		
47	969011	2	Gasket		
48	18387	1	Clamp		
49	944926	1	Flange screw		

