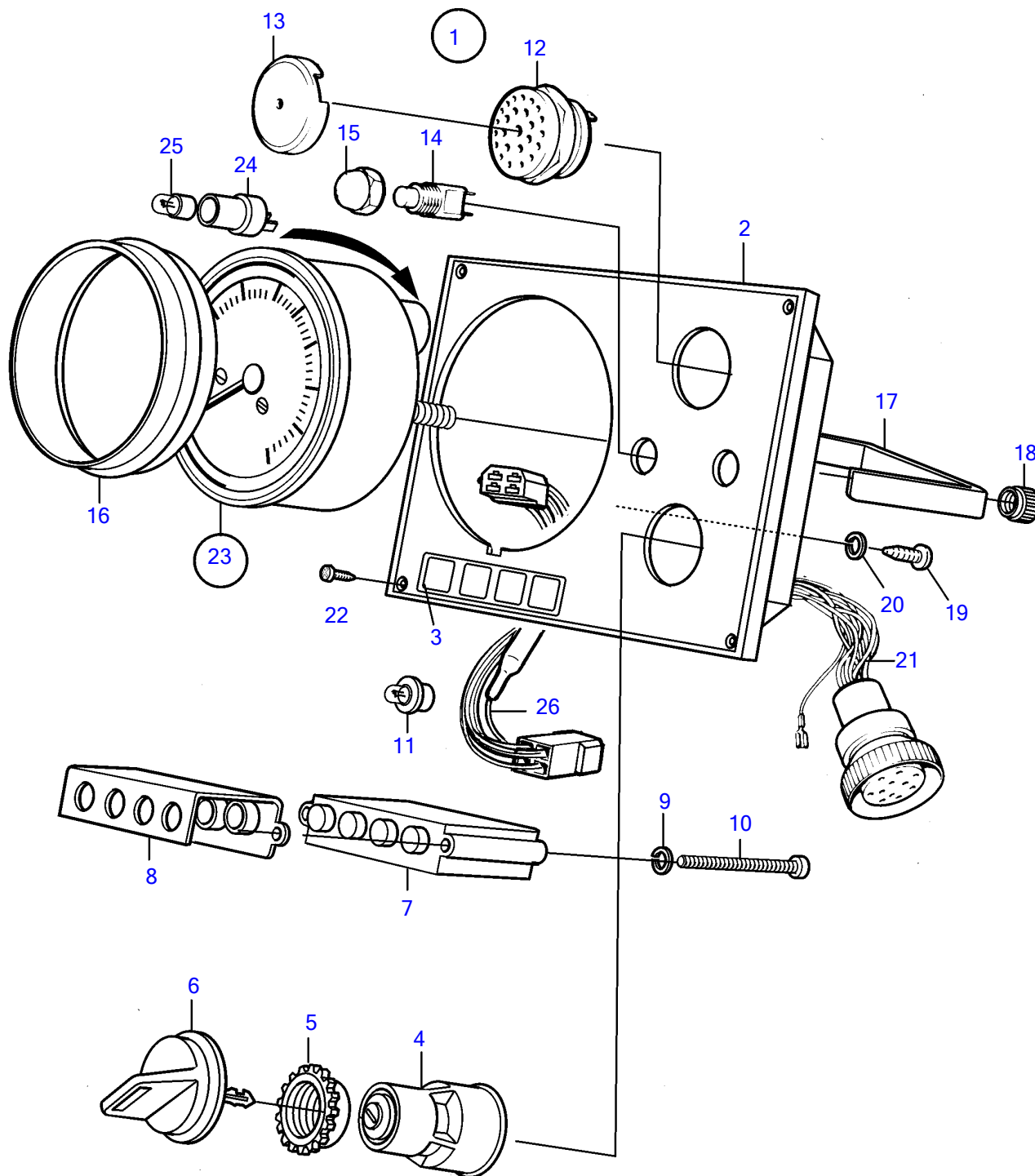


TAMD71B, TAMD73P-A, TAMD73WJ-A



TAMD71B, TAMD73P-A, TAMD73WJ-A

REF	PART NO.	QTY	DESCRIPTION	SEE SEC.	NOTES
1	873592	1	Instrument panel		Repl by 3587076
	3587076	1	Instrument panel		
2	860183	1	▪ Instrument panel		
3	858645	1	▪ Symbol strip		
4	864277	1	▪ Starter switch		Repl by 3587072
	3587072		▪ Starter switch		
5	859955	1	▪ • Plastic nut		
6	859953	2	▪ • Key		State key code when ordering.
			▪ Bulletin 49-30	49-30-EN	Key P/N 859953 (873209)
7	873737	1	▪ Electronic unit		
8	828784	1	▪ Reflector		
9	941904	2	▪ Spring washer		
10	(941615)	2	▪ Cross recessed screw		Obsolete part
11	828818	4	▪ Bulb		24V
12	828587	1	▪ Buzzer		
13	858795	1	▪ Protecting casing		
14	828584	1	▪ Toggle switch		Alarm test
	828585	1	▪ Toggle switch		Instr. light
15	828586	2	▪ Nut		
16	873517	1	▪ Ring		
17	873208	1	▪ Brace kit		
18		2	▪ • Nut		
19	949947	1	▪ Cross recessed screw		
20	941904	1	▪ Spring washer		
21	828648	1	▪ Cable kit		
22	828647	4	▪ Screw		
23	873998	1	Tachometer kit		3400 rpm, 12/24V (873586) (876750)
24	863945	1	▪ Lamp socket		
25	863946	1	▪ Bulb		12V, 1,2W
	863947	1	▪ Bulb		24V, 1,2W
26	873695	1	▪ Diode cable		