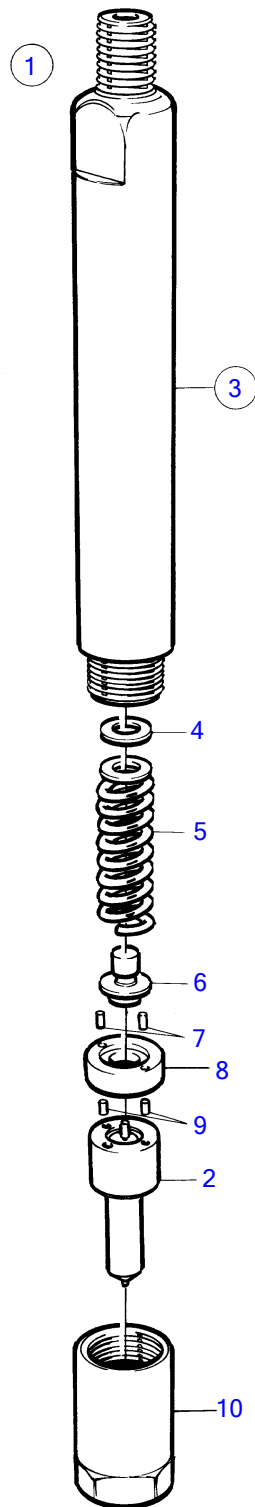


TAMD63L-A, TAMD63P-A



15452

TAMD63L-A, TAMD63P-A

REF	PART NO.	QTY	DESCRIPTION	NOTES
1	3827030	1	Injector	
	3803510	1	Injector, exch	
2	3828045	1	• Nozzle	
3	(477505)	1	• Nozzle retainer	Obsolete part
4	3094406	X	• • Adjusting washer	TH=1,00mm (244797)
	244798	X	• • Shim	TH=1,04mm
	3094407	X	• • Adjusting washer	TH=1,08mm (244788)
	244804	X	• • Shim	TH=1,12mm
	3094408	X	• • Adjusting washer	TH=1,16mm (244801)
	3094469	X	• • Adjusting washer	TH=1,20mm (244799)
	6212417	X	• • Adjusting washer	TH=1,22mm
	3094470	X	• • Adjusting washer	TH=1,24mm (244805)
	244807	X	• • Shim	TH=1,28mm
	244789	X	• • Shim	TH=1,32mm
	858908	X	• • Adjusting washer	TH=1,34mm
	3094471	X	• • Adjusting washer	TH=1,36mm (244811)
	846966	X	• • Adjusting washer	TH=1,38mm
	3094472	X	• • Adjusting washer	TH=1,40mm (244800)
	244790	X	• • Shim	TH=1,44mm
	3094473	X	• • Adjusting washer	TH=1,48mm (244802)
	244791	X	• • Shim	TH=1,52mm
	846954	X	• • Adjusting washer	TH=1,54mm
	3094474	X	• • Adjusting washer	TH=1,56mm (244792)
	858906	X	• • Adjusting washer	TH=1,59mm
	3094475	X	• • Adjusting washer	TH=1,60mm (244793)
	846970	X	• • Adjusting washer	TH=1,62mm
	3094476	X	• • Adjusting washer	TH=1,64mm (244806)
	244803	X	• • Shim	TH=1,68mm
	858905	X	• • Adjusting washer	TH=1,70mm
	3094477	X	• • Adjusting washer	TH=1,72mm (244794)
	244812	X	• • Shim	TH=1,76mm
	846975	X	• • Adjusting washer	TH=1,78mm
	844328	X	• • Adjusting washer	TH=1,80mm
	6212420	X	• • Adjusting washer	TH=1,82mm
	846958	X	• • Adjusting washer	TH=1,84mm
	3094409	X	• • Adjusting washer	TH=1,86mm (244808)
	244813	X	• • Adjusting washer	TH=1,88mm
	3094478	X	• • Adjusting washer	TH=1,92mm (244795)
	846959	X	• • Adjusting washer	TH=1,94mm
	3094467	X	• • Adjusting washer	TH=1,96mm (244796)
	846980	X	• • Adjusting washer	TH=1,98mm
5	244820	1	• • Compression spring	
6	3094597	1	• • Pressure bolt	(244821)
7	844339	2	• • Locating pin	
8	1698513	1	• • Washer	
9	244447	2	• • Pin	
10	3092030	1	• • Fitting nut	