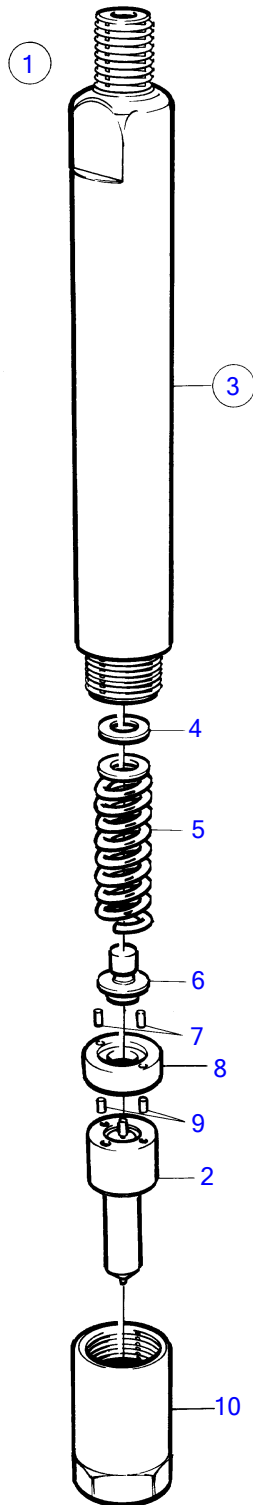


TAMD63L-A, TAMD63P-A



15452

TAMD63L-A, TAMD63P-A

REF	PART NO.	QTY	DESCRIPTION	NOTES
1	3826132	1	Injector	
	3803296	1	Injector, exch	
2	3826244	1	• Nozzle	
3	(3826131)	1	• Retainer	Obsolete part
4	3094411	X	• • Adjusting washer	TH=1,00mm
	3094414	X	• • Adjusting washer	TH=1,06mm
	3094416	X	• • Adjusting washer	TH=1,10mm
	3094421	X	• • Adjusting washer	TH=1,20mm
	3094425	X	• • Adjusting washer	TH=1,30mm
	3094431	X	• • Adjusting washer	TH=1,42mm
	3094435	X	• • Adjusting washer	TH=1,50mm
	3094440	X	• • Adjusting washer	TH=1,60mm
	3094441	X	• • Adjusting washer	TH=1,62mm
	3094445	X	• • Adjusting washer	TH=1,70mm
	3094450	X	• • Adjusting washer	TH=1,80mm
	3094456	X	• • Adjusting washer	TH=1,92mm
5	3094460	1	• • Compression spring	
6	3094598	1	• • Pressure bolt	
7	844339	2	• • Locating pin	
8	3094462	1	• • Washer	
9	244447	2	• • Pin	
10	3092030	2	• • Fitting nut	