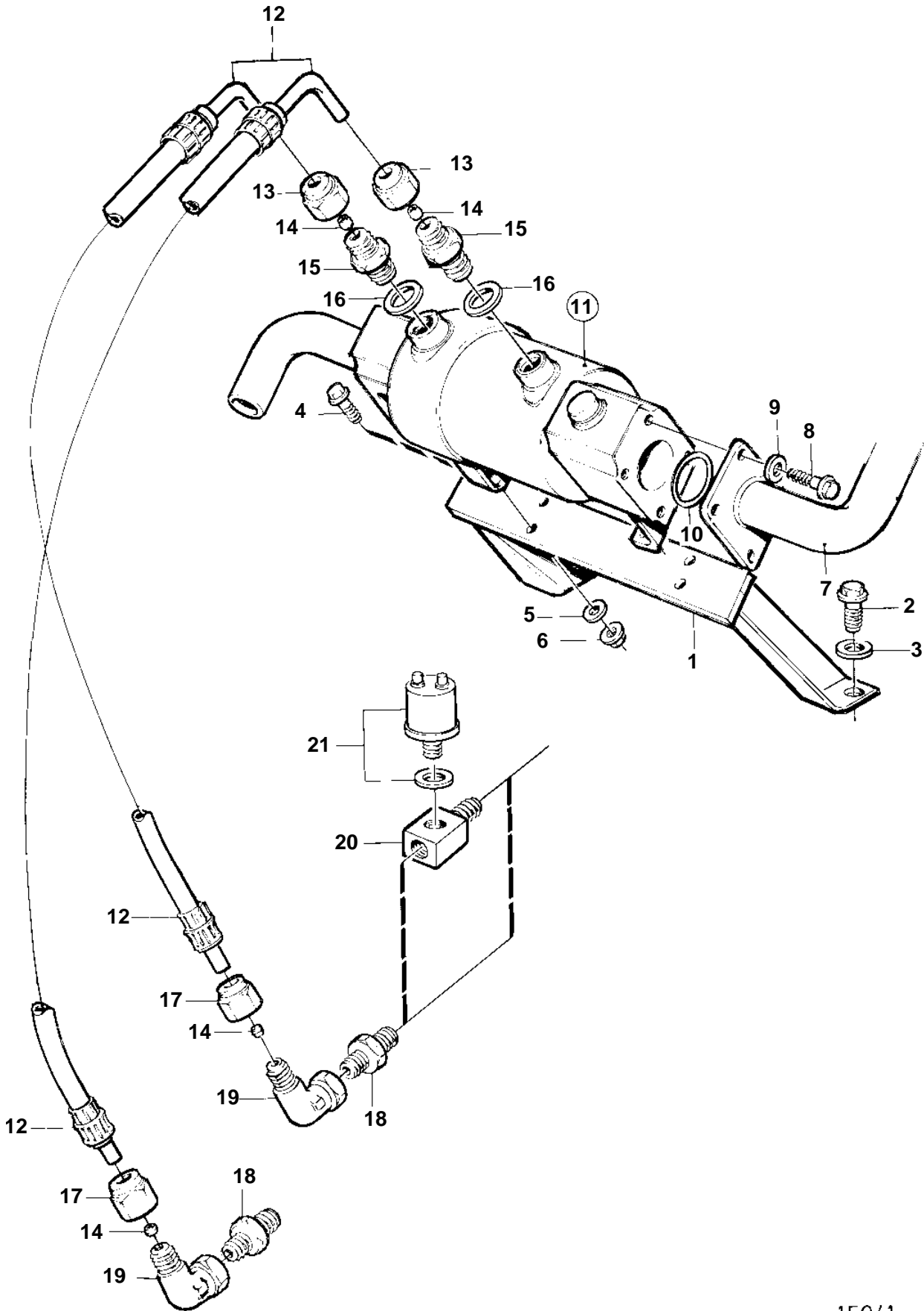


TAMD61A



15941

TAMD61A

| REF | PART NO. | QTY | DESCRIPTION | SEE SEC. | NOTES |
|-----|----------|-----|-----------------|----------|----------------------------------|
| 1 | 848098 | 1 | Bracket | | |
| 2 | 970971 | 2 | Screw | | |
| 3 | 940280 | 2 | Spring washer | | |
| 4 | 955295 | 4 | Screw | | |
| 5 | 941907 | 4 | Spring washer | | |
| 6 | 955782 | 4 | Nut | | |
| 7 | | 1 | Coolant pipe | 693 | |
| 8 | 970947 | 4 | Screw | | |
| 9 | 941908 | 4 | Spring washer | | |
| 10 | 864491 | 1 | Gasket | | |
| 11 | | 1 | Oil cooler | | |
| | | | | 764 | |
| 12 | 847165 | 2 | Hose | | L=580mm |
| 13 | 941331 | 2 | Nut | | |
| 14 | 1677898 | 4 | Ferrule | | (956970) |
| 15 | 968132 | 2 | Nipple | | |
| 16 | 957184 | 2 | Washer | | EARLY TYPE |
| 17 | 956984 | 2 | Nut | | |
| 18 | 941750 | 2 | Nipple | | |
| 19 | 964016 | 2 | Nipple | | LATE TYPE |
| 20 | 842425 | 1 | Nipple | | |
| 21 | 866840 | 1 | Pressure sensor | | 0-30bar (837781) SEE GROUP 30 |