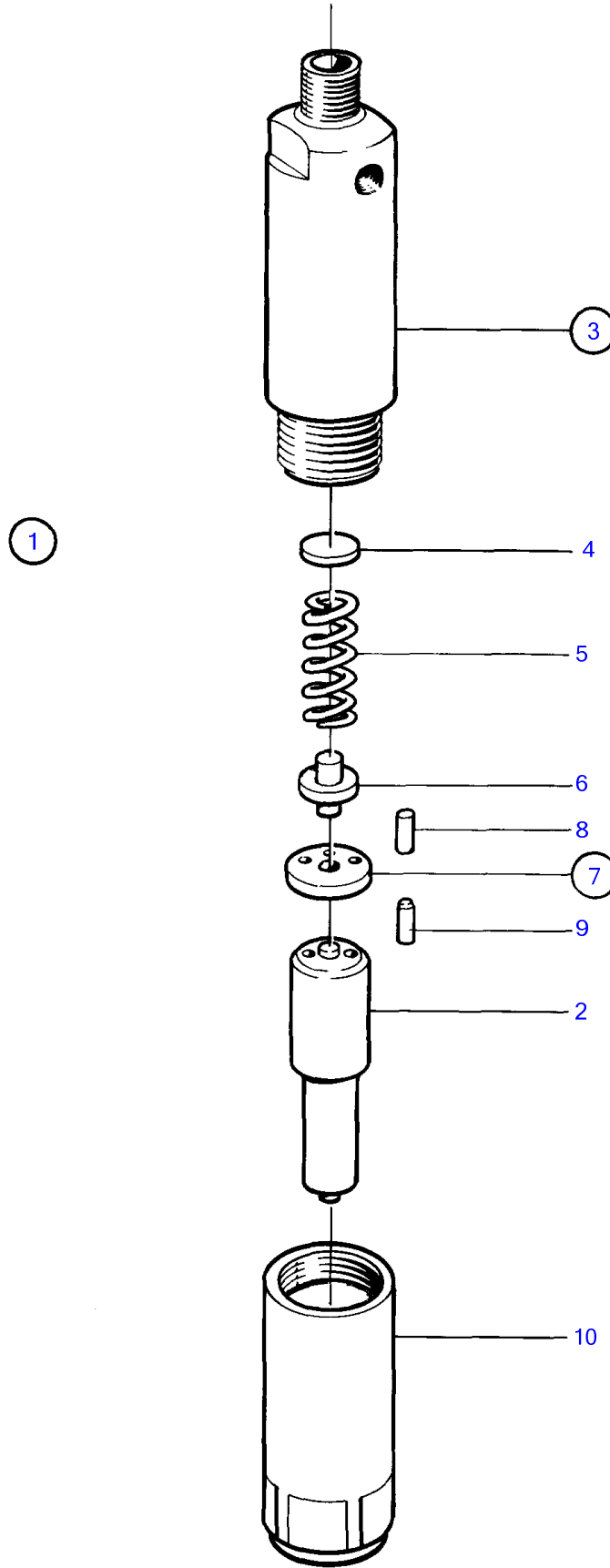


TAMD122P-B, TAMD122P-C



15245

TAMD122P-B, TAMD122P-C

REF	PART NO.	QTY	DESCRIPTION	NOTES
1	3826194	1	Injector	
	3803301	1	Injector, exch	
2	866990	1	• Nozzle	
3		1	• Nozzle retainer	
4	3094406	X	• • Adjusting washer	TH=1,00mm
	244798	X	• • Shim	TH=1,04mm
	3094407	X	• • Adjusting washer	TH=1,08mm
	860174	X	• • Adjusting washer	TH=1,10mm
	244804	X	• • Shim	TH=1,12mm
	3094408	X	• • Adjusting washer	TH=1,16mm
	3094469	X	• • Adjusting washer	TH=1,20mm
	6212417	X	• • Adjusting washer	TH=1,22mm
	3094470	X	• • Adjusting washer	TH=1,24mm
	244807	X	• • Shim	TH=1,28mm
	859356	X	• • Adjusting washer	TH=1,30mm
	244789	X	• • Shim	TH=1,32mm
	858908	X	• • Adjusting washer	TH=1,34mm
	3094471	X	• • Adjusting washer	TH=1,36mm
	846966	X	• • Adjusting washer	TH=1,38mm
	3094472	X	• • Adjusting washer	TH=1,40mm
	6212393	X	• • Adjusting washer	TH=1,42mm
	244790	X	• • Shim	TH=1,44mm
	3094473	X	• • Adjusting washer	TH=1,48mm
	859358	X	• • Adjusting washer	TH=1,50mm
	244791	X	• • Shim	TH=1,52mm
	846954	X	• • Adjusting washer	TH=1,54mm
	3094474	X	• • Adjusting washer	TH=1,56mm
	858906	X	• • Adjusting washer	TH=1,58mm
	3094475	X	• • Adjusting washer	TH=1,60mm
	846970	X	• • Adjusting washer	TH=1,62mm
	3094476	X	• • Adjusting washer	TH=1,64mm
	244803	X	• • Shim	TH=1,68mm
	858905	X	• • Adjusting washer	TH=1,70mm
	3094477	X	• • Adjusting washer	TH=1,72mm
	846957	X	• • Adjusting washer	TH=1,74mm
	244812	X	• • Shim	TH=1,76mm
	846975	X	• • Adjusting washer	TH=1,78mm
	844328	X	• • Adjusting washer	TH=1,80mm
	6212420	X	• • Adjusting washer	TH=1,82mm
	846958	X	• • Adjusting washer	TH=1,84mm
	3094409	X	• • Adjusting washer	TH=1,86mm
	244813	X	• • Adjusting washer	TH=1,88mm
	3094478	X	• • Adjusting washer	TH=1,92mm
	846959	X	• • Adjusting washer	TH=1,94mm
	3094467	X	• • Adjusting washer	TH=1,96mm
	846980	X	• • Adjusting washer	TH=1,98mm
5	244820	1	• • Compression spring	
6	3094859	1	• • Screw	
7	1698513	1	• • Washer	
8	844339	2	• • • Locating pin	
9	244447	2	• • • Pin	
10	3092030	1	• • Fitting nut	