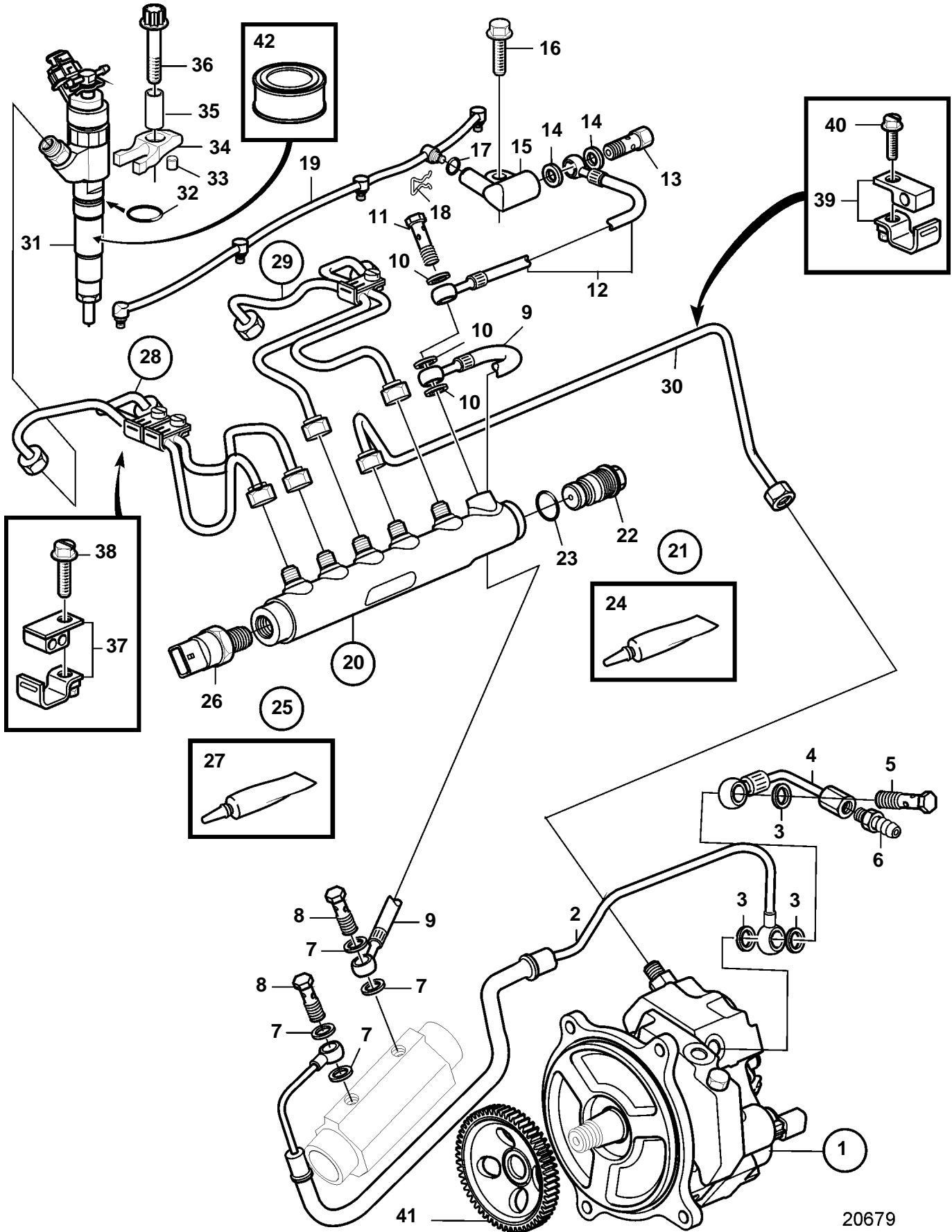


D4-300A-A, D4-300A-C, D4-300A-D, D4-300D-A, D4-300D-C, D4-300D-D, D4-300I-A, D4-300I-C, D4-300I-D



D4-300A-A, D4-300A-C, D4-300A-D, D4-300D-A, D4-300D-C, D4-300D-D, D4-300I-A, D4-300I-C, D4-300I-D

REF	PART NO.	QTY	DESCRIPTION	SEE SEC.	NOTES
1	3803633	1	High-pressure pump,		
				6600	
2	3582997	1	Fuel hose		
3	11994	3	Gasket		
4	3584199	1	Return connection		
5	947975	1	Hollow screw		
6	3825000	1	Hose nipple		
7	11994	4	Gasket		
8	969299	2	Hollow screw		
9	3584367	1	Fuel hose		
10	11994	3	Gasket		
11	947975	1	Hollow screw		
12	3584366	1	Fuel hose		
13	3584427	1	Pressure retaining v		
14	969011	2	Gasket		
15	3583123	1	Valve housing		
16	946173	1	Flange screw		
17	3589700	5	O-ring		
18	3583122	1	Lock spring		
19	3582802	1	Leak-off line		
20	3886062	1	Rail		
21	3884353	1	· Pressure limiting va		
22		1	· · Pressure limiting va		
23	3588336	1	· · · O-ring		
24	828250	1	· · Lubricating grease		
25	3884352	1	· Pressure sensor		
26		1	· · Pressure sensor		
27	828250	1	· · Lubricating grease		
28	3588024	1	Delivery pipe kit		
29	3588025	1	Delivery pipe kit		
30	3582796	1	Delivery pipe		
31	3801148	4	Injector, exch		
32	3887602	4	O-ring		
33	3583442	4	Support		
34	3582669	4	Clamp		
35	889789	4	Sleeve		
36	3586690	4	Screw		
37	3586006	3	Clamp		
38	3586005	3	Screw		
39	3588018	2	Clamp		
40	946544	2	Flange screw		
41	889749	1	Gear		
42	3588346	X	Lubricant		500g