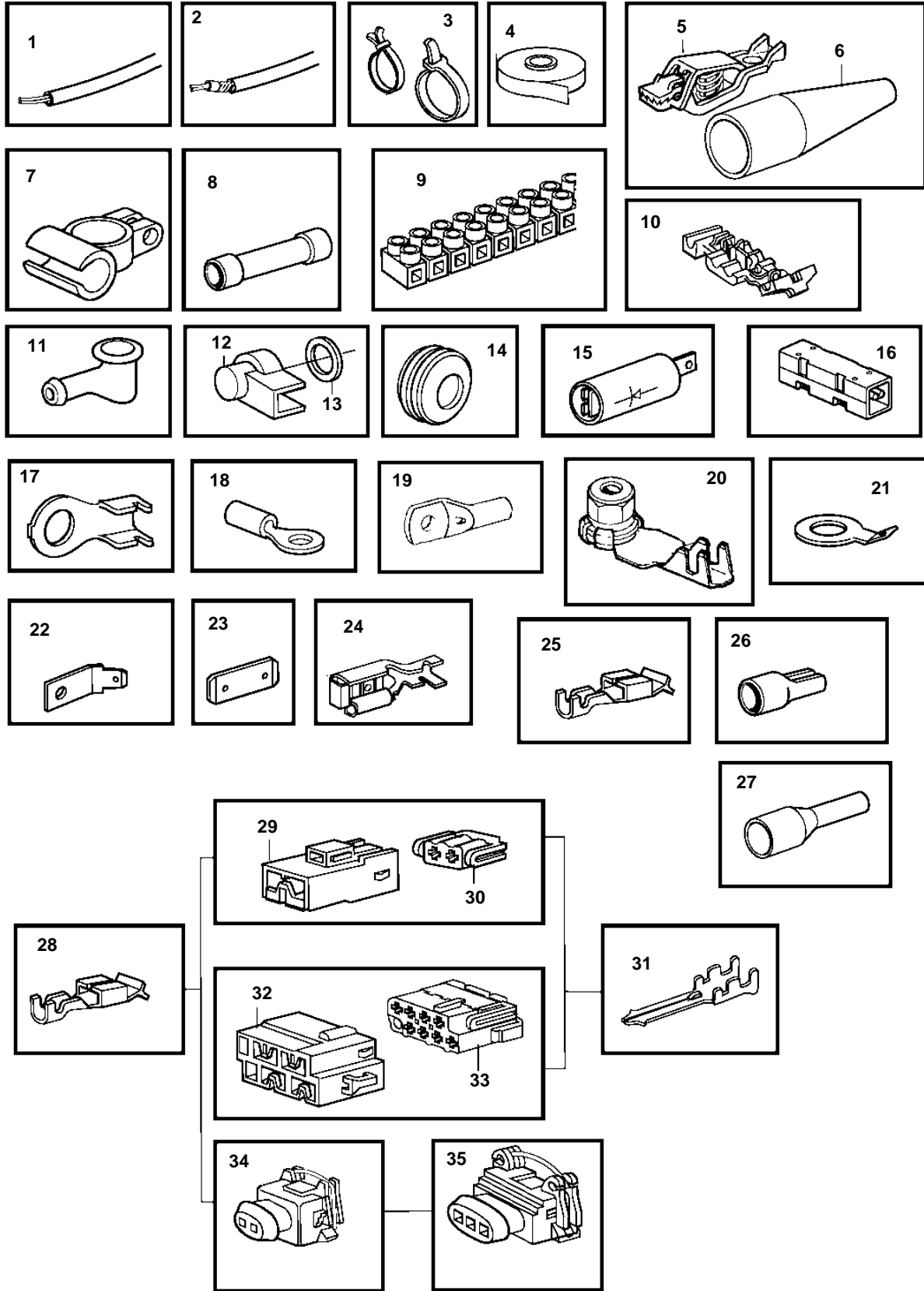


D4-180I-B, D4-180I-C, D4-180I-D, D4-210A-A, D4-210A-B, D4-210I-A, D4-210I-B, D4-225A-B, D4-225A-C, D4-225A-D, D4-225I-B, D4-225I-C, D4-225I-D, D4-260A-A, D4-260A-B, D4-260A-C, D4-260A-D, D4-260D-B, D4-260D-C, D4-260D-D, D4-260I-A, D4-260I-B, D4-260I-C, D4-260I-D, D4-300A-A, D4-300A-C, D4-300A-D, D4-300D-A, D4-300D-C, D4-300D-D, D4-300I-A, D4-300I-C, D4-300I-D



D4-180I-B, D4-180I-C, D4-180I-D, D4-210A-A, D4-210A-B, D4-210I-A, D4-210I-B, D4-225A-B, D4-225A-C, D4-225A-D, D4-225I-B, D4-225I-C, D4-225I-D, D4-260A-A, D4-260A-B, D4-260A-C, D4-260A-D, D4-260D-B, D4-260D-C, D4-260D-D, D4-260I-A, D4-260I-B, D4-260I-C, D4-260I-D, D4-300A-A, D4-300A-C, D4-300A-D, D4-300D-A, D4-300D-C, D4-300D-D, D4-300I-A, D4-300I-C, D4-300I-D

REF	PART NO.	DESCRIPTION	NOTES
1	970624	Electric cable, type RK	1,5sq.mm, BLACK
	970626	Electric cable, type RK	1,5sq.mm, RED
	970661	Electric cable, type R2	1,5sq.mm, RED
		Electric cable, type R2	2,5sq.mm, BLACK
	970698	Electric cable, type R2	2,5sq.mm, RED
	970700	Electric cable, type RK	4,0sq.mm, BLACK
	970709	Electric cable, type RK	6,0sq.mm, BLACK
	970711	Electric cable, type R2	6,0sq.mm, RED
	954485	Electric cable, type RK	16,0sq.mm, RED
		Electric cable, type RK	25,0sq.mm, RED
	954502	Electric cable, type RK	35,0sq.mm, RED
2	874854	Power cable	Non reinforced ship cable approved by classification societies., 2x1,5sq.mm
	863657	Cable	Reinforced ship cable approved by classification societies., 4,0sq.mm, RED
	874855	Power cable	Non reinforced ship cable approved by classification societies., 2x2,5sq.mm
		Cable	Non reinforced ship cable approved by classification societies., 3x1,5sq.mm
	874858	Power cable	Non reinforced ship cable approved by classification societies., 6,0sq.mm, BLACK
		Cable	Non reinforced ship cable approved by classification societies., 16,0sq.mm, RED
	874861	Power cable	Non reinforced ship cable approved by classification societies., 25,0sq.mm, RED
	874862	Power cable	Non reinforced ship cable approved by classification societies., 35,0sq.mm, RED
	846639	Electric cable	Non reinforced ship cable approved by classification societies., 2x1,5sq.mm
	874870	Power cable	Non reinforced ship cable approved by classification societies., 2x1,5sq.mm
	872679	Wiring harness	(846346)
	872939	Adapter	(846346)
	874346	Electric cable	Reinforced ship cable approved by classification societies., RFOU 0,6/1kv
3	948211	Cable tie	3x1,5sq.mm
	949666	Cable tie, with mount. hole	3x4,0sq.mm
	948616	Cable tie	3x6,0sq.mm
	862832	Cable tie, steel	4x1,5sq.mm
4	858283	Tape	4x2,5sq.mm
5	844280	Clip, battery cable +pole	16x1,5sq.mm
6		Isolation	Red
		Isolation	BLACK
7	954505	Cable terminal, battery cable -pole	D=77mm L=280mm
	954506	Cable terminal, battery cable +pole	D=42mm L=170mm
8	956956	Splice	D=102mm L=362mm
	956958	Splice	1,5-2,5sq.mm, BLUE
	956960	Splice	L=61mm
9	926219	Coupling piece	BLACK
10	944306	Connector	BLUE
11	829200	Protective cap	0,5-1,0sq.mm, RED
12	1234326	Protecting casing	1,5-2,5sq.mm, BLUE
13	960140	Washer	3-6sq.mm, YELLOW
14	941269	Plug	MAX 20sq.mm, 12-POLE
	821053	Protecting bushing	I.D=35mm
	943920	Plug	I.D=40mm
15		Diode	
16		Diode	
17	970788	Cable terminal	M5x1,1-2,5sq.mm
	970789	Cable terminal	M6x1,1-2,5sq.mm
		Cable terminal	M10x1,1-2,5sq.mm
18	881492	Cable terminal	M4x1,1-2,5sq.mm
	881493	Cable terminal	M5x1,1-2,5sq.mm
	881508	Cable terminal	M6x1,1-2,5sq.mm
	881494	Cable terminal	M8x1,1-2,5sq.mm
	881504	Cable terminal	M10x1,1-2,5sq.mm
	881506	Cable terminal	M4x2,6-6,0sq.mm

D4-180I-B, D4-180I-C, D4-180I-D, D4-210A-A, D4-210A-B, D4-210I-A, D4-210I-B, D4-225A-B, D4-225A-C, D4-225A-D, D4-225I-B, D4-225I-C, D4-225I-D, D4-260A-A, D4-260A-B, D4-260A-C, D4-260A-D, D4-260D-B, D4-260D-C, D4-260D-D, D4-260I-A, D4-260I-B, D4-260I-C, D4-260I-D, D4-300A-A, D4-300A-C, D4-300A-D, D4-300D-A, D4-300D-C, D4-300D-D, D4-300I-A, D4-300I-C, D4-300I-D

REF	PART NO.	DESCRIPTION	NOTES
18	881495	Cable terminal	M5x2,6-6,0sq.mm
	881496	Cable terminal	M6x2,6-6,0sq.mm
	881497	Cable terminal	M8x2,6-6,0sq.mm
	881498	Cable terminal	M10x2,6-6,0sq.mm
	940331	Cable terminal	M5x6,1-10,0sq.mm
	940332	Cable terminal	M6x6,1-10,0sq.mm
	940333	Cable terminal	M8x6,1-10,0sq.mm
		Cable terminal	M10x6,1-10,0sq.mm
	881512	Cable terminal	M5x10,1-16,0sq.mm
	940335	Cable terminal	M6x10,1-16,0sq.mm
	940336	Cable terminal	M8x10,1-16,0sq.mm
	940337	Cable terminal	M10x10,1-16,0sq.mm
19	949587	Cable terminal	M10x10mm2
20	8140576	Nut	M4
21	865758	Cable terminal	I.D=12,5 D=23mm
22	944485	Cable terminal	6,3xM5x180
23	839328	Tab	16,3x6,3x0,8
24	881491	Cable terminal	6,3x0,75-2,1sq.mm
25	853015	Cable terminal	For trim instrument., FOR 853866, YASAKI
26	942429	Cable terminal	FOR 853866, YASAKI
27	3829867	Cable terminal	
	3829868	Cable terminal	
28	970777	Cable terminal	
29	968377	Housing	2,8x2 NATURAL
	968379	Housing	2,8x2 GRAY
30	968376	Housing	4,8/2,8x2 NATURAL
	968378	Housing	4,8/2,8x2 GRAY
31	974313	Cable terminal	2,8x0,8x1,1-2,5sq.mm
32	968401	Housing	2,8x8 NATURAL
33	968400	Housing	4,8/2,8x8 NATURAL
34	976256	Housing	2-POLE
35	967713	Housing	3-pole