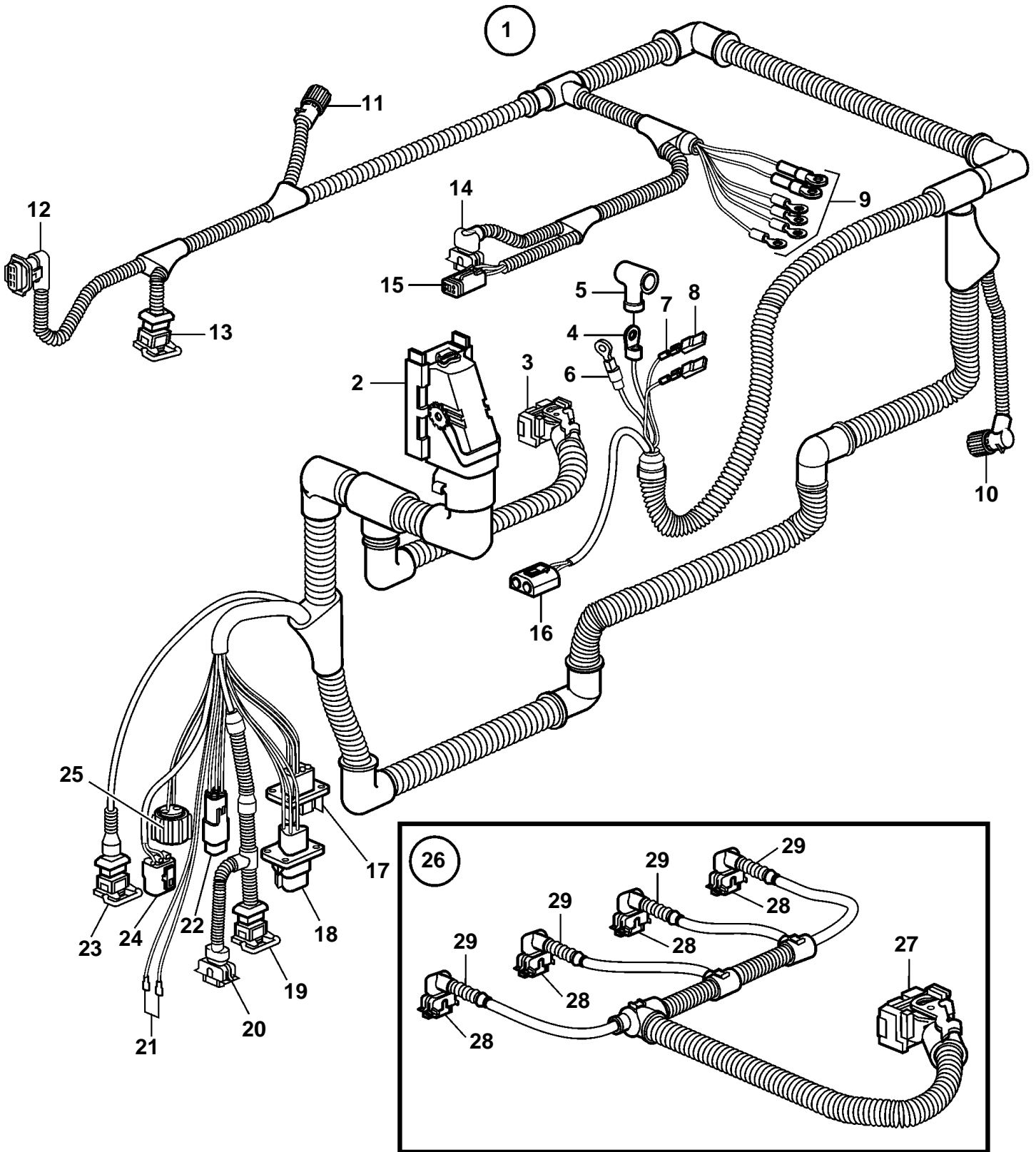


D4-260A-A, D4-260A-B, D4-260D-B, D4-300A-A, D4-300D-A



21504

D4-260A-A, D4-260A-B, D4-260D-B, D4-300A-A, D4-300D-A

REF	PART NO.	QTY	DESCRIPTION	NOTES
1	889391	1	Wiring harness	SN-2004004473
	3840337	1	Wiring harness	SN2004004474-, Replaced by 3886310
	3886310	1	Wiring harness	
2	874567	1	· Cover, 89-pole	EDC-UNIT
3	874568	1	· Cover, 36-pole	EDC-UNIT
4	976478	1	· Cable terminal	
5	842150	1	· Protective cap	
6	976477	1	· Cable terminal	
7	973121	2	· Cable terminal	
8	949597	2	· Housing	
9	978969	1	· Cable terminal	
	970790	1	· Cable terminal	
	940336	1	· Cable terminal	
	978966	1	· Cable terminal	
	978970	1	· Cable terminal	
	940337	1	· Cable terminal	
10	8159013	1	· Housing	
11	8159018	1	· Adapter	
12	874456	1	· Receptacle housing, pressure/temp	4-POLE
13	977929	1	· Housing, WIF	3-pole
14	874368	1	· Receptacle housing, fuel pump	
15	874957	1	· Insulator	4-POLE
16	1307048	1	· Housing	
17	874432	1	· Tab housing	VPEP
18	874654	1	· Insulator, oil level	
19	874432	1	· Tab housing, temperature	FUEL
20	874455	1	· Receptacle housing, pressure	3-POLE
21		1	· Stop connector	
22	874802	1	· Insulator	
23	976256	1	· Housing, temperature	2-POLE
24	970753	1	· Housing, temperature	2-POLE
25	8159013	1	· Housing	4-POLE
26	3809875	1	Wiring harness	
27	874566	1	· Coupling piece	16-POLE
28	874368	4	· Receptacle housing	2-POLE
29	3809871	4	· Rubber cap	