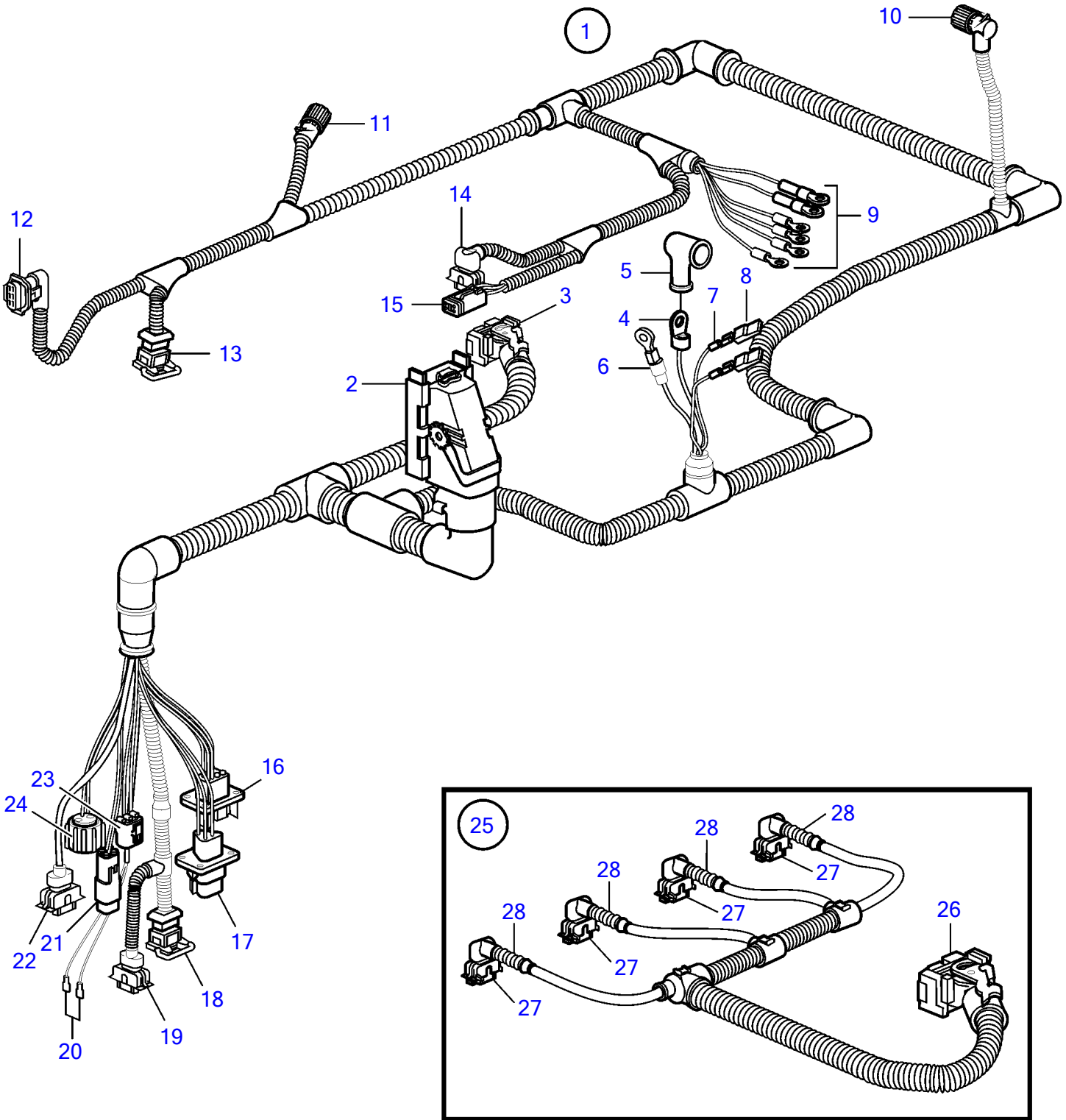


D4-180I-B, D4-210A-A, D4-210A-B, D4-210I-A, D4-210I-B, D4-225A-B, D4-225I-B, D4-260I-A, D4-260I-B, D4-300I-A



21625

D4-180I-B, D4-210A-A, D4-210A-B, D4-210I-A, D4-210I-B, D4-225A-B, D4-225I-B, D4-260I-A, D4-260I-B, D4-300I-A

REF	PART NO.	QTY	DESCRIPTION	NOTES
1	889416	1	Wiring harness	SN-2004004524
	3840339	1	Wiring harness	SN2004004525-, Replaced by 3883799
	3883799	1	Wiring harness	
2	874567	1	• Cover, 89-pole	EDC-unit
3	874568	1	• Cover, 36-pole	EDC-unit
4	976478	1	• Cable terminal	
5	842150	1	• Protective cap	
6	976477	1	• Cable terminal	
7	973121	2	• Cable terminal	
8	949597	2	• Housing	
9	978969	1	• Cable terminal	
	970790	1	• Cable terminal	
	940336	1	• Cable terminal	
	978966	1	• Cable terminal	
	978970	1	• Cable terminal	
	940337	1	• Cable terminal	
10	8159013	1	• Housing	
11	8159018	1	• Adapter	
12	874456	1	• Receptacle housing, pressure/temp	4-pole
13	977929	1	• Housing, WIF	3-pole
14	874368	1	• Receptacle housing, fuel pump	
15	874957	1	• Housing	4-pole
16	874432	1	• Tab housing	VPEP
17	874654	1	• Housing, oil level	
18	874432	1	• Tab housing, temperature	Fuel
19	874455	1	• Receptacle housing, pressure	3-pole
20		1	• Stop connector	
21	874802	1	• Insulator	
22	976256	1	• Housing, temperature	2-pole
23	970753	1	• Housing, temperature	2-pole
24	8159013	1	• Housing	4-pole
25	3809873	1	Wiring harness	
26	874566	1	• Coupling piece	16-pole
27	874368	4	• Receptacle housing	2-pole
28	3809871	4	• Rubber cap	

7746200-30-6777

21625

Upd:2012-02-23