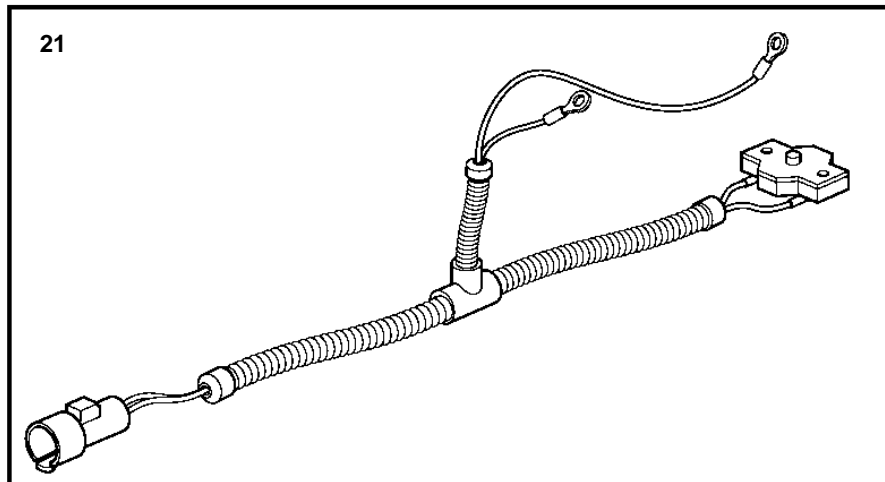
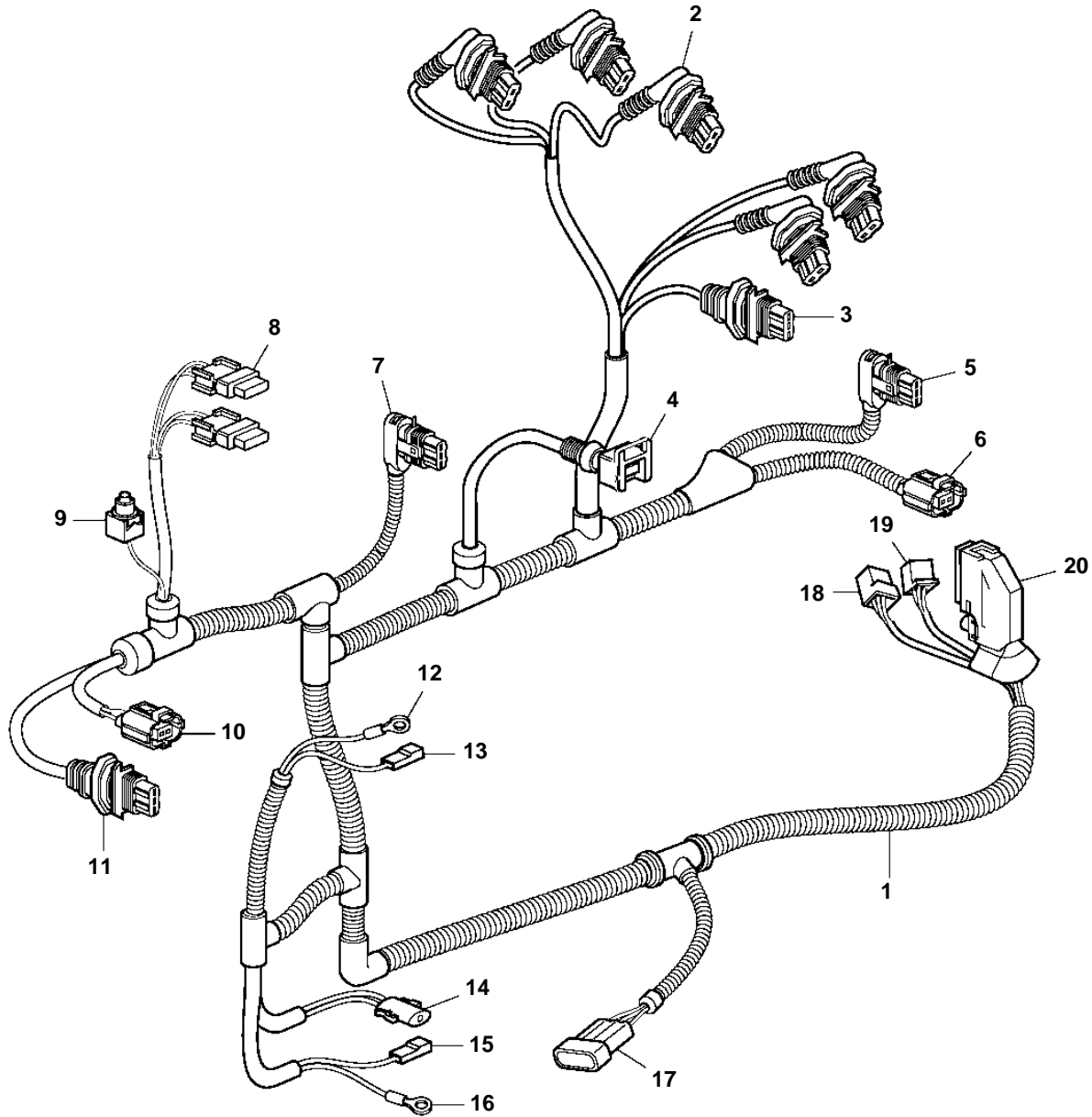


D3-110i-B, D3-130i-B, D3-160i-B, D3-190i-B, D3-130A-B, D3-160A-B, D3-190A-B



D3-110i-B, D3-130i-B, D3-160i-B, D3-190i-B, D3-130A-B, D3-160A-B, D3-190A-B

REF	PART NO.	QTY	DESCRIPTION	NOTES
1	3817979	1	Cable harness	
2	8622454	1	Receptacle housing	
	8637824	2	Cable terminal	
	979908	2	Seal	
	3809871	1	Rubber cap	
3	8622455	1	Receptacle housing	
	970772	3	Seal	
4	976256	1	Switch	
	970778	2	Cable terminal	
	970772	2	Seal	
5	8622454	1	Receptacle housing	
	8637824	2	Cable terminal	
	970773	2	Seal	
	888693	1	Adapter	
6	11039397	1	Rubber sleeve	
	948702	1	Strip clamp	
7	9456341	1	Receptacle housing	
	970772	4	Seal	
	874529	1	Adapter	
8		1	Fuse holder	
	874220	1	Cable terminal	
		1	Seal	
	873854	1	Sealing sleeve	
	978999	1	Fuse	
9	973121	2	Cable terminal	
10	9469830	1	Receptacle housing	
	8637679	2	Seal	
11	8645258	1	Receptacle housing	
	970772	3	Seal	
12	970798	1	Cable terminal	
13	881484	1	Cable terminal	
	943511	1	Receptacle housing	
14	1307035	1	Insulator	
		1	Cable terminal	
15	949597	1	Housing	
	973121	1	Cable terminal	
16	970798	1	Cable terminal	
17	874211	1	Tab housing	
	874212	1	Lock	
	874213	3	Cable terminal	
	874214	3	Seal	
	948702	1	Strip clamp	
18	1212905	1	Insulator	
	970746	2	Cable terminal	
	970745	4	Cable terminal	
19	948856	1	Receptacle housing	
	881486	2	Cable terminal	
	949206	2	Cable terminal	
20	9494934	1	Cover	
	9187012	1	Clip	
	9456594	1	Cover	
	948702	1	Strip clamp	
	9456578	1	Receptacle housing	
	9442487	32	Cable terminal	
	9456580	1	Receptacle housing	
	9456574	1	Receptacle housing	
	970777	6	Cable terminal	
21	3587374	1	Wiring harness	For SX Drive.