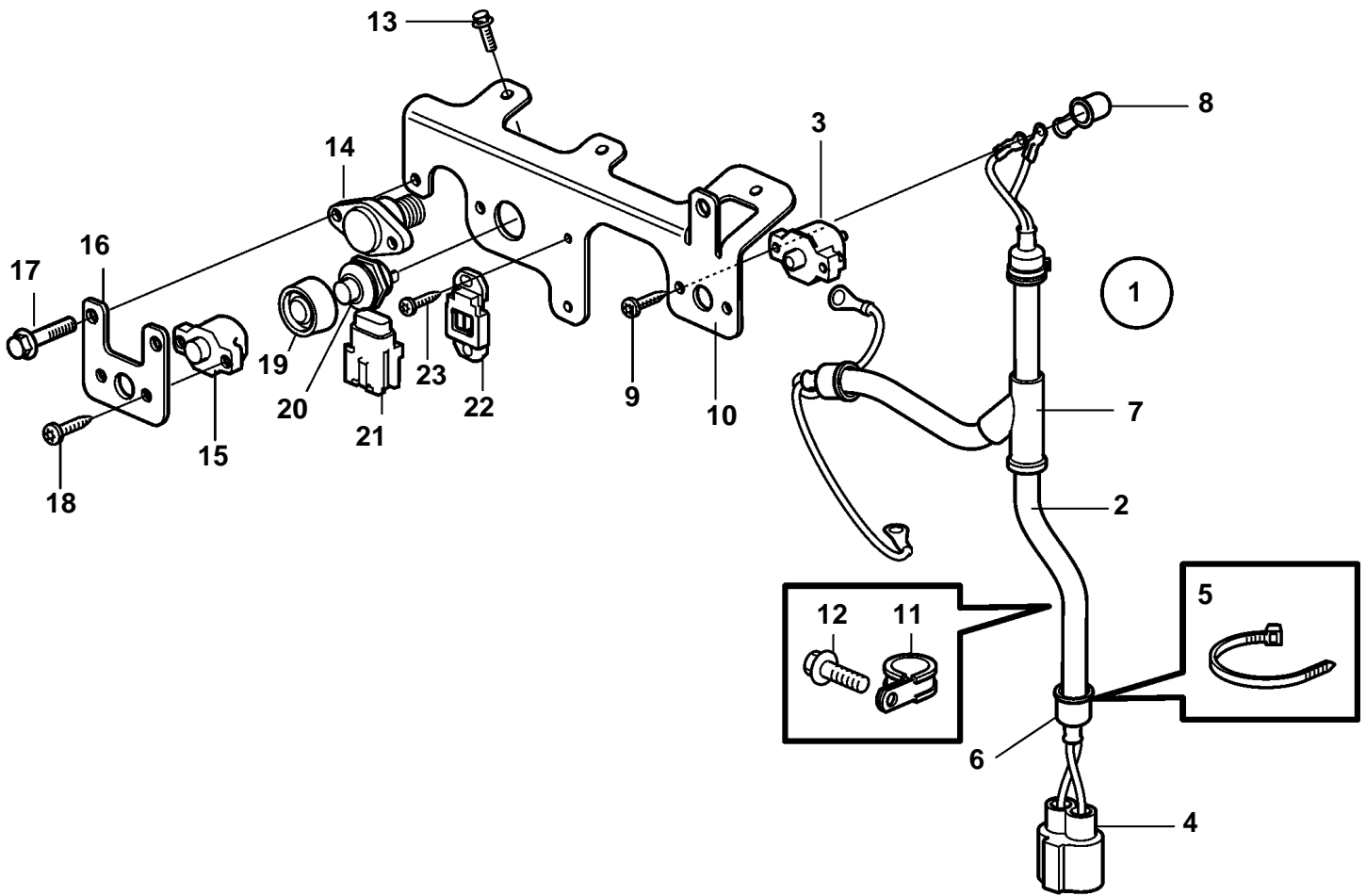


D3-140A-D, D3-170A-D, D3-200A-D, D3-220A-D



24845

D3-140A-D, D3-170A-D, D3-200A-D, D3-220A-D

REF	PART NO.	QTY	DESCRIPTION	NOTES
1	21334583	1	Wiring harness	
2	21312722	1	· Wiring harness	
3	3885972	1	· Automatic fuse	40AMP
4	3843097	1	Connector	
5	948702	3	Cable tie	
6	4803711	3	Protecting sleeve	
7		1	Protection	
8	829200	2	Protective cap	
9	969278	2	6 point socket screw	
10	21328042	1	Bracket	
11	952629	1	Clamp	
12	946671	1	Flange screw	M8x30mm
13	948746	3	Flange screw	M6x16mm
14	3848975	1	Stop button	
15	856337	1	Automatic fuse	SOLAS
16	21328048	1	Bracket	SOLAS
17	946544	2	Flange screw	SOLAS
18	3853620	2	Hexagon screw	SOLAS
19	837533	1	Rubber cap	
20	843684	1	Button	
21	873852	1	Fuse holder	
22	873944	1	Retainer	
23	969278	2	6 point socket screw	