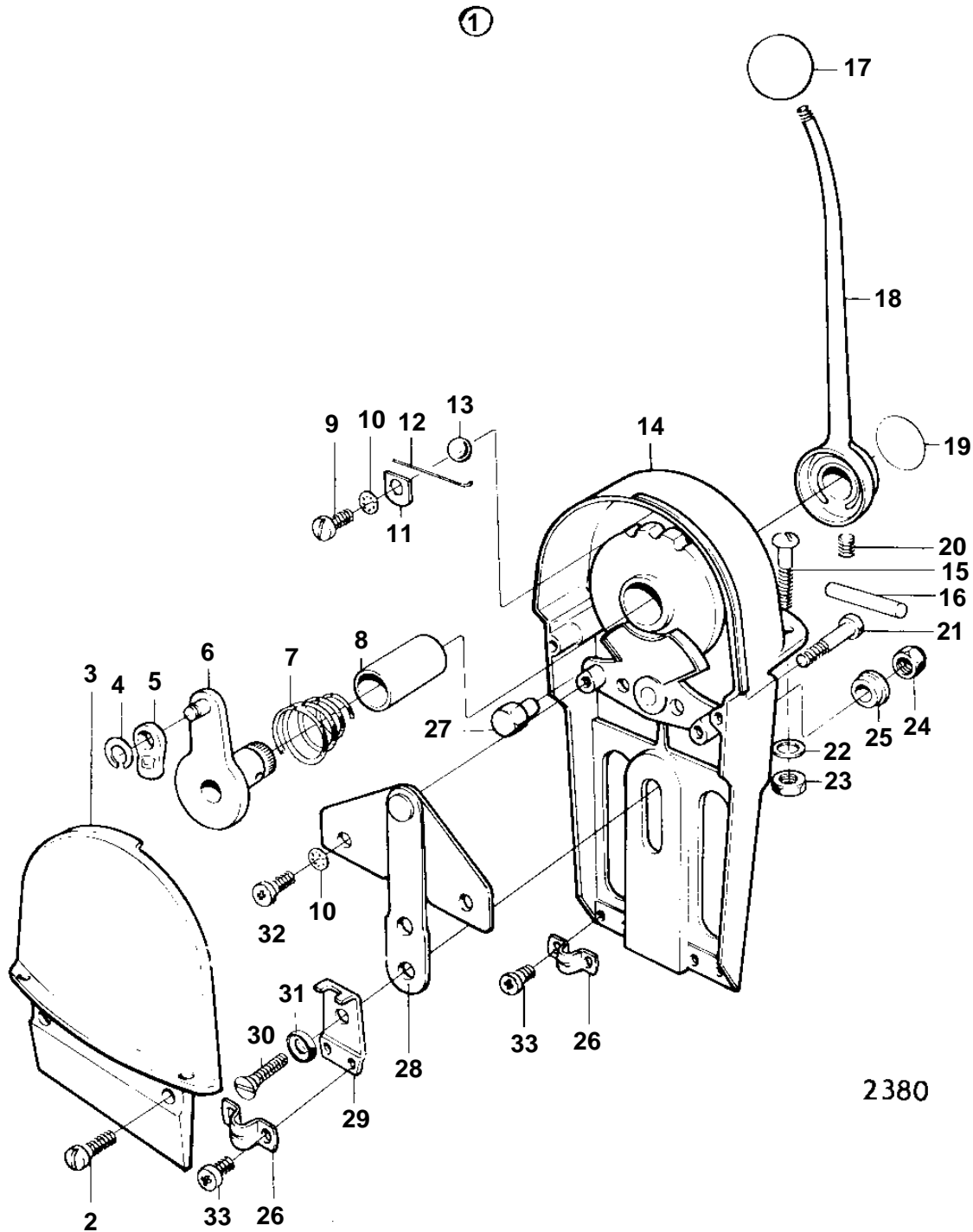


COMMON



COMMON

| REF | PART NO. | QTY | DESCRIPTION | NOTES |
|-----|----------|-----|--------------------|-------------------------------|
| 1 | 809968 | 1 | Control | FOR TWIN ENGINE INSTALLATION. |
| 4 | 951668 | 2 | · Lock ring | |
| 5 | 814269 | 2 | · Cable attachment | |
| 6 | 825877 | 2 | · Throttle arm | |
| 7 | 825870 | 2 | · Spring | |
| 8 | 825872 | 2 | · Bushing | |
| 9 | 950019 | 2 | · Screw | |
| 10 | 955946 | 6 | · Lock washer | |
| 11 | 825878 | 2 | | |
| 12 | 825879 | 6 | · Spring | |
| 13 | 60309 | 2 | · Ball | |
| 14 | | 2 | · HOUSING | |
| 15 | 943091 | 4 | · Screw | |
| 16 | 825880 | 2 | · Pin | |
| 17 | 825881 | 2 | · Ball | |
| 18 | 825882 | 2 | · Lever | |
| 19 | 825883 | 2 | | |
| 20 | 825874 | 2 | · Screw | |
| 21 | 950025 | 2 | · Screw | |
| 22 | 940275 | 4 | · Washer | |
| 23 | 940092 | 4 | · Nut | |
| 24 | 950372 | 2 | · Nut | |
| 25 | 825865 | 2 | · Sleeve | |
| 26 | 817726 | 4 | · Clamp | |
| 27 | 825873 | 2 | · Clamp | |
| 28 | 825867 | 2 | | |
| 29 | 820003 | 2 | · Anchorage | |
| 30 | 827715 | 2 | | |
| 31 | 827716 | 2 | · Bushing | |
| 32 | 950020 | 4 | · Screw | |
| 33 | 950019 | 8 | · Screw | |