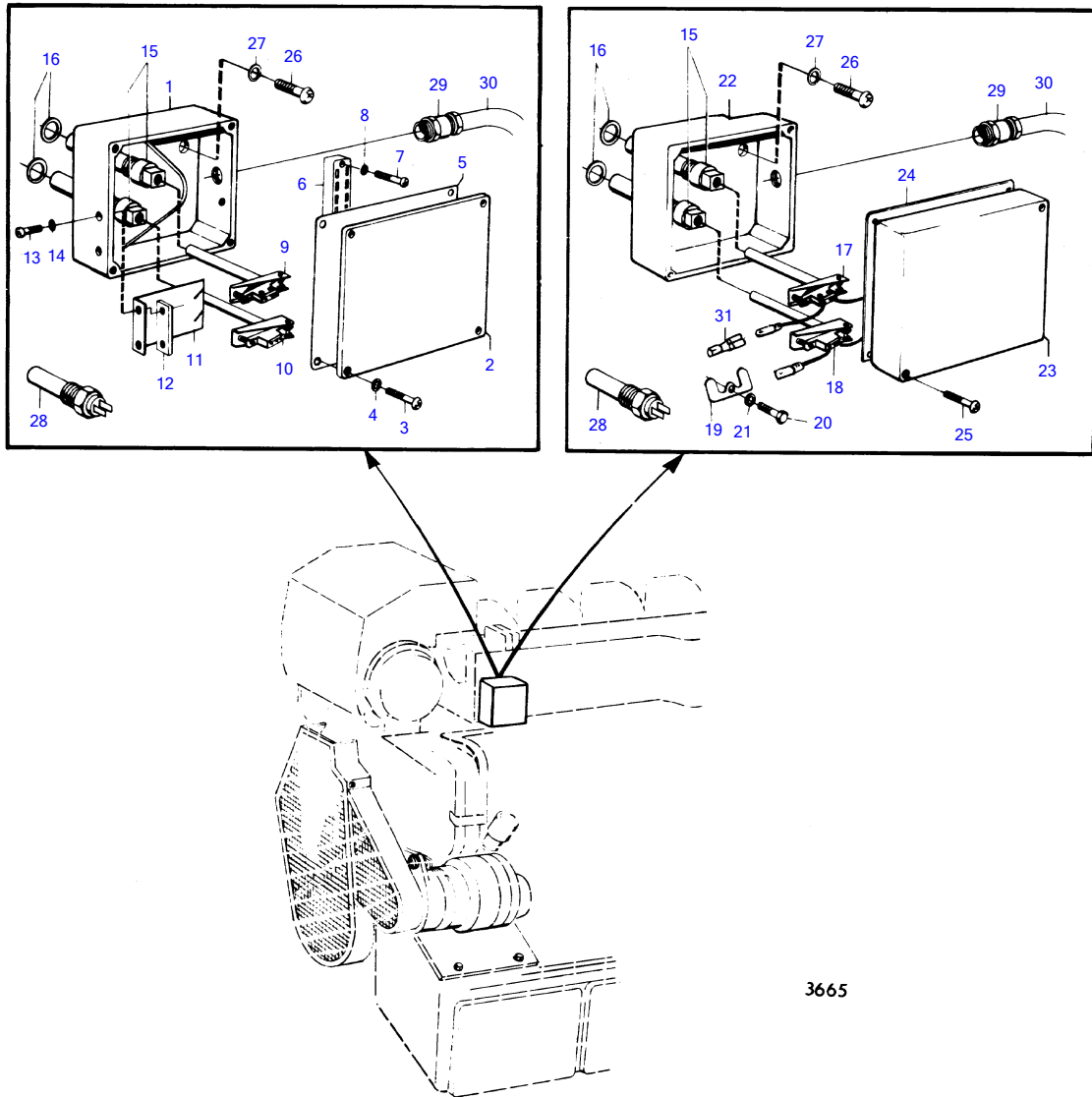


MD120A, TMD120A, TAMD120A, TAMD120B



3665

## MD120A, TMD120A, TAM120A, TAM120B

| REF | PART NO. | QTY | DESCRIPTION          | SEE SEC. | NOTES   |
|-----|----------|-----|----------------------|----------|---|
| 1   | (836722) | 1   | Housing              |          | Obsolete part   |
| 2   | (836721) | 1   | Cover                |          | MO-XXXX/7699, Obsolete part   |
| 3   | 950021   | 4   | Cross recessed screw |          | MO-XXXX/7699  |
| 4   | (955946) | 4   | Toothed washer       |          | MO-XXXX/7699, Obsolete part   |
| 5   | (837179) | 1   | Gasket               |          | MO-XXXX/7699, Obsolete part   |
| 6   | (881079) | 1   | Terminal block       |          | MO-XXXX/7699, Obsolete part   |
| 7   | (950011) | 2   | Cross recessed screw |          | MO-XXXX/7699, Obsolete part   |
| 8   | 955945   | 2   | Toothed washer       |          | MO-XXXX/7699  |
| 9   | 836716   | 1   | Temperature contact  |          | Replaced by 1ea 841765 alternator, 1ea 841812 pulley, 1ea 845021 tension iron, 1ea 949607 lever, 1ea 955780 plate, 1ea 955781 plate and 1ea 941905 resilient lever., MO-XXXX/7699 |
| 10  | 836717   | 1   | Temperature contact  |          | Replaced by 1ea 1578938., MO-XXXX/7699  |
| 11  | (836719) | 1   | Clamp                |          | MO-XXXX/7699, Obsolete part   |
| 12  | (836720) | 1   | Washer               |          | MO-XXXX/7699, Obsolete part   |
| 13  | (950020) | 2   | Cross recessed screw |          | MO-XXXX/7699, Obsolete part   |
| 14  | 941905   | 2   | Spring washer        |          | MO-XXXX/7699  |
| 15  | 836718   | 2   | Sleeve               |          |   |
|     | 836718   | 1   | Sleeve               |          | For charging of 2 batteries,use charge distributor 831793, MOXXXX/31089-  |
| 16  | 957184   | 2   | Gasket               |          |   |
| 17  | 837472   | 1   | Thermo monitor       |          | Replaced by 1ea 841765 alternator, 1ea 841812 pulley, 1ea 845021 tension iron, 1ea 949607 lever, 1ea 955780 plate, 1ea 955781 plate and 1ea 941905 resilient lever., MOXXXX/7700- |
| 18  | 837473   | 1   | Thermo monitor       |          | Replaced by 1ea 1578938., MO-12769/XXXXXX,replaced by 841378., MOXXXX/7700-   |
| 19  | (837396) | 1   | Lock washer          |          | Obsolete part, MOXXXX/7700-   |
| 20  | 956076   | 1   | Cross recessed screw |          | MOXXXX/7700-  |
| 21  | 941905   | 1   | Spring washer        |          | MOXXXX/7700-  |
| 22  | 837391   | 1   | Housing              |          | MOXXXX/7700-  |
| 23  | 837392   | 1   | Cardboard tube       |          | MOXXXX/7700-  |
| 24  | 837424   | 1   | Gasket               |          | MOXXXX/7700-  |
| 25  | 956301   | 2   | Cross recessed screw |          | MOXXXX/7700-  |
| 26  | 956568   | 1   | Hex. socket screw    |          | L=19mm  |
|     | 956567   | 2   | Hex. socket screw    |          | L=16mm  |
| 27  | (955949) | 2   | Toothed washer       |          | Obsolete part   |
| 28  | 827150   | 1   | Sensor               |          | See group 2B  |
|     | 837044   | 1   | Temperature sensor   |          | For charging of 2 batteries,use charge distributor 831793, See group 2B   |
| 29  | 881192   | 1   | Grommet              |          |   |
| 30  |          |     | cables               |          | Can't be used on alternator 841765.   |
| 31  |          |     | cable terminal       | 14577    |   |