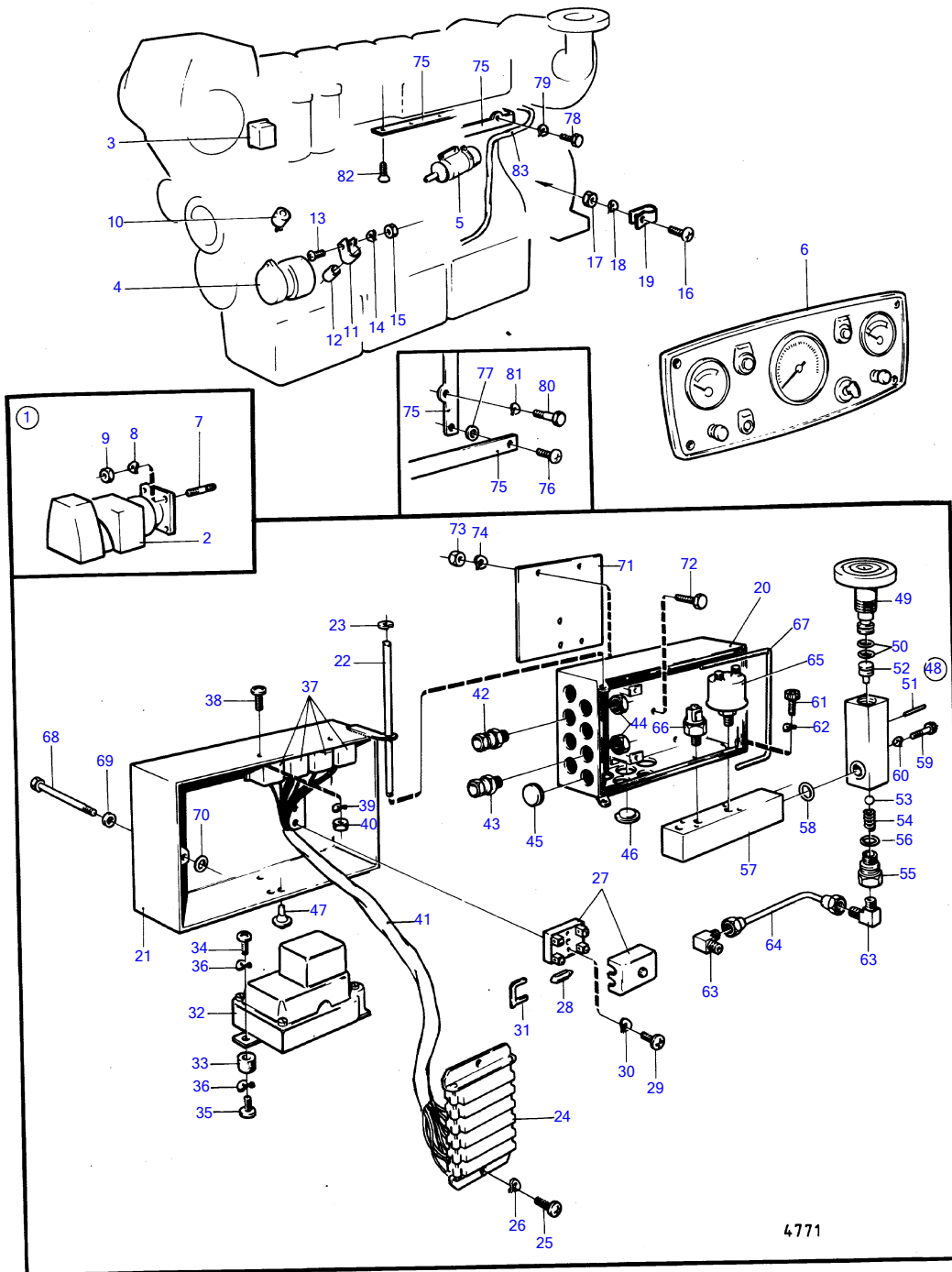


MD120A, TMD120A, TAMD120A



MD120A, TMD120A, TAMD120A

REF	PART NO.	QTY	DESCRIPTION	SEE SEC.	NOTES
1	870998	1	Starter motor		24V repl by 847308
			•	14564	
	847308	1	Starter motor		24V
			• components not spec.		
2			starter cover with installation components	14596	
3			thermoswitch and protecting box with installation components	14594	
4			alternator with installation components		
			installation components	14589	
5			stop solenoid with installation components		See group 2D
6	(823364)	1	Instrument panel		24V, Obsolete part
			•	14566	
7	953486	3	Stud		
8	942336	3	Spring washer		
9	955827	3	Hexagon nut		
10	1507899	1	Tachometer sensor		
11	(18986)	1	Clamp		Obsolete part
12	(241608)	1	Protective sleeve		Obsolete part
13	950047	1	Cross recessed screw		
14	941906	2	Spring washer		
15	955825	1	Hexagon nut		
16	956065	1	Cross recessed screw		
17	955779	1	Hexagon nut		
18	941904	1	Spring washer		
19	952627	1	Clamp		
20	(837812)	1	Clutch housing		Obsolete part
21	(837866)	1	Cover		Obsolete part
22	(837838)	1	Shaft		Obsolete part
23	951667	2	E-circlip		
24	(837829)	1	Terminal block		Obsolete part
25	956074	2	Cross recessed screw		
26	941905	2	Spring washer		
27	(88578)	2	Fuse box		Obsolete part
28	943905	2	Fuse, blue		25A
	942785	2	Fuse		16A
29	956060	4	Cross recessed screw		
30	941904	4	Spring washer		
31	(842390)	1	Bridge connector		Obsolete part
32	823480	1	Charge regulator		Bröyt spec. 867510., 24V 25A
33	899709	3	Vibration damper		
34	956091	3	Cross recessed screw		
35	956092	3	Cross recessed screw		
36	941906	6	Spring washer		
37	1504951	4	Relay		
38	956074	2	Cross recessed screw		
39	941905	2	Spring washer		
40	955780	2	Hexagon nut		
41	(842124)	1	Cable trunk		Obsolete part
42	822327	2	Grommet		
43	881192	2	Grommet		
44	880243	4	Nut		
45	94081	9	Plug		
46	662620	2	Rubber button		
47	(655545)	3	Rubber button		Alt, Obsolete part
48	837928	1	Valve		
49		1	•		
50	925052	2	• O-ring		
51	951938	1	• Spring pin		
52	(837932)	1	• Intermediate section		Obsolete part
53	(70472)	1	• Ball		Obsolete part

7742190-30-14581

4771

Upd:2011-08-15

MD120A, TMD120A, TAMD120A

REF	PART NO.	QTY	DESCRIPTION	SEE SEC.	NOTES
54	(832441)	1	• Spring		Obsolete part
55		1	•		
56	955985	1	• O-ring		
57	(837938)	1	Spacer		Obsolete part
58	955984	1	O-ring		
59	(959182)	4	Hex. socket screw		Obsolete part
60	941904	4	Spring washer		
61	942001	4	Hex. socket screw		
62	941906	4	Spring washer		
63	954342	2	Elbow nipple		
64	(842075)	1	Oil pressure pipe		Obsolete part
	(842199)	1	Oil pressure pipe		TMD120A, MD120A, Obsolete part
	(842070)	1	Oil pressure pipe		TAMD120A, Obsolete part
65	881432	1	Sensor		
66	843812	1	Switch		Stop
	843813	1	Switch		Alarm
67	(842224)	X	Sealing strip		L=1000mm, Obsolete part
68	955261	1	Hexagon screw		
69	960138	1	Washer		
70	955978	1	O-ring		
71	(842156)	1	Bracket		MD120A, TMD120A, Obsolete part
72	955524	5	Hexagon screw		
73	955826	2	Hexagon nut		
74	941907	5	Spring washer		
75			cable holders		
76	(950144)	2	Screw		Obsolete part
77	120265	2	Washer		
78	(950558)	1	Pin		Obsolete part
79	940280	1	Spring washer		
80	940133	1	Hexagon screw		
81	942336	1	Spring washer		
82	950158	2	Cross recessed sunk		
	(950160)	1	Cross recessed sunk		Obsolete part
83		X	cables		Can't be used on alternator 841765.