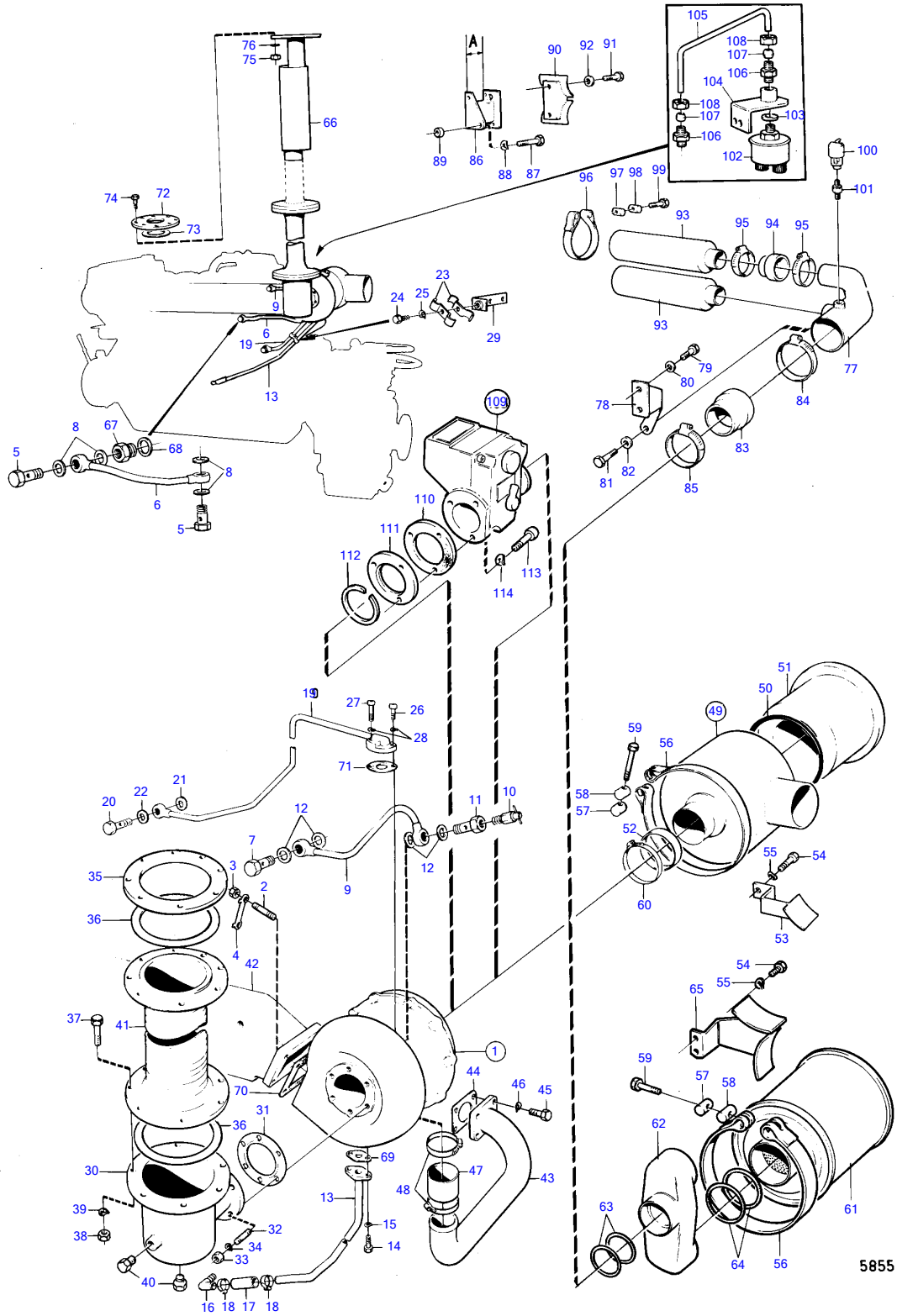


TAMD120A



5855

TAMD120A

REF	PART NO.	QTY	DESCRIPTION	SEE SEC.	NOTES
1		1			Åkerman spec. 867454.
			•	14497	
	3802009	1	Turbocharger		MO23457/XXXX-
		1	Turbocharger, exch		MO23457/XXXX-
			•	14497	
2	945851	4	Stud		
3	943152	4	Nut		
4	468219	2	Lock washer		
5	944213	2	Hollow screw		(836969)
6	(836851)	1	Pipe		MO-23456/XXXX, Obsolete part
	842428	1	Coolant pipe		MO23457/XXXX-
7	944213	1	Hollow screw		(836969)
8	190957	4	Gasket		
9	(836852)	1	Pipe		Obsolete part, MO-23456/XXXX
	842429	1	Coolant pipe		MO23457/XXXX-
10	82745	1	Shut-off cock		
11	836981	1	Screw		
12	190957	4	Gasket		
13	822572	1	Oil feed pipe		
14	940115	2	Hexagon screw		
15	942336	2	Spring washer		
16	468629	1	Elbow nipple		
17	192358	X	Hose		L=80mm
18	943474	2	Hose clamp		
19	822571	1	Oil pressure pipe		
20	942589	1	Hollow screw		
21	942703	1	Gasket		
22	957181	1	Gasket		
23	820851	2	Clamp		
24	955512	1	Hexagon screw		
25	941906	1	Spring washer		
26	956584	1	Hex. socket screw		
27	956585	1	Hex. socket screw		
28	942336	2	Spring washer		
29	822625	1	Bracket		
30	(836982)	1	Exhaust riser		MO-23456/XXXX, Obsolete part
	842423	1	Exhaust riser		MO23457/XXXX-
31	836984	1	Gasket		MO-23456/XXXX
	411710	1	Gasket		MO23457/XXXX-
32	953259	6	Stud		
33	943152	6	Nut		
34	942336	6	Spring washer		
35	836887	1	Weld flange		
36	836884	2	Gasket		
37	955592	16	Hexagon screw		
38	955829	16	Hexagon nut		
39	941912	16	Spring washer		
40	192154	2	Plug		
41	836880	1	Exhaust hose		L=590mm
42			induction and exhaust manifold with installation components	14492	
43	837481	1	Intake bend	14494	
44	836026	1	Gasket	14494	
45	956570	4	Hex. socket screw	14494	
46	941907	4	Spring washer	14494	
47	(944375)	X	Hose		L=50mm, Obsolete part
48	943482	2	Hose clamp		
49	(823674)	1	Air filter		MO-XXXX/29427, Obsolete part
50	(823672)	1	• Gasket		Obsolete part
51	(823671)	1	• Insert		Obsolete part
52	(823673)	1	Spacer ring		MO-XXXX/29427, Obsolete part
53	(836985)	1	Cradle		MO-XXXX/29427, Obsolete part

TAMD120A

REF	PART NO.	QTY	DESCRIPTION	SEE SEC.	NOTES
54	955588	2	Hexagon screw		
55	941912	2	Spring washer		
56	(823681)	1	Tensioning band		MO-XXXX/29427, Obsolete part
	821028	2	Tensioning band		MOXXXX/29428-
57	31404	1	Clevis pin, threaded		MO-XXXX/29427
	31404	2	Clevis pin, threaded		MOXXXX/29428-
58	31405	1	Pin		MO-XXXX/29427
	31405	2	Pin		MOXXXX/29428-
59	31406	1	Hexagon screw		MO-XXXX/29427
	31406	2	Hexagon screw		MOXXXX/29428-
60	943482	1	Hose clamp		(951799)
61	842280	2	Air filter		MOXXXX/29428-
62	842853	1	Connection pipe		MOXXXX/29428-
63	925078	2	O-ring		MOXXXX/29428-
64	925082	4	O-ring		MOXXXX/29428-
65	842850	1	Bracket		MOXXXX/29428-
66	836257	1	Muffler		L=1370mm
	837224	1	Muffler		L=1675mm
67	836993	1	Nipple		See group 2A
68	469328	1	Gasket		See group 2A
69	417381	1	Gasket		D70B,classified engine.
70	417382	1	Gasket		D70B,classified engine.
71	417378	1	Gasket		D70B,classified engine.
72	(842002)	2	Weld flange		D70B spec. 867055, 867060. TD70B spec. 867066., Obsolete part
	(842003)	2	Weld flange		Engine with oil cooler fitted on front of the engine., Obsolete part
73	842012	2	Gasket		D70B spec. 867055, 867060. TD70B spec. 867066.
	(842513)	2	Gasket		Engine with oil cooler fitted on front of the engine., Obsolete part
74	955592	16	Hexagon screw		
75	955829	16	Hexagon nut		
76	941912	16	Spring washer		
77	(842583)	1	Connection pipe		Spec. 867221., Obsolete part
78	(842607)	1	Bracket		Spec. 867221., Obsolete part
79	955588	2	Hexagon screw		Spec. 867221.
80	941912	2	Spring washer		Spec. 867221.
81	940113	1	Hexagon screw		Spec. 867221.
82	941907	1	Spring washer		Spec. 867221.
83	837178	1	Rubber cone		Spec. 867221.
84	961907	1	Hose clamp		Spec. 867221.
85	943483	1	Hose clamp		Spec. 867221., (951800)
86	(842581)	1	Bracket		Spec. 867221., A=162mm, Obsolete part
	(842582)	1	Bracket		Spec. 867221., A=75mm, Obsolete part
87	955533	2	Hexagon screw		Spec. 867221., L=114mm
	180110	2	Elbow nipple		Spec. 867221., (941672) L=197mm
88	941907	4	Spring washer		Spec. 867221.
89	807183	1	Spacer sleeve		Spec. 867221., L=6mm
	960141	2	Washer		Spec. 867221., L=2mm
90	(823808)	2	Bracket		Spec. 867221., Obsolete part
91	940113	4	Hexagon screw		Spec. 867221.
92	941907	4	Spring washer		Spec. 867221.
93	823701	2	Air filter		Spec. 867221.
94	836334	2	Rubber cone		Spec. 867221.
95	943484	4	Hose clamp		Spec. 867221., (951801)
96	821028	4	Tensioning band		Spec. 867221.
97	31404	4	Clevis pin, threaded		Spec. 867221.
98	31405	4	Pin		Spec. 867221.
99	31406	4	Hexagon screw		Spec. 867221.
100	842037	1	Pressure drop indica		Spec. 867221.
101	191095	1	Nipple		Spec. 867221.
102	837782	1	Pressure sensor, pressure sender		MOXXXX/29428-

TAMD120A

REF	PART NO.	QTY	DESCRIPTION	SEE SEC.	NOTES
					See group 3
103	957181	1	Gasket, gasket		MOXXXX/29428-
					See group 3
104	843698	1	Bracket		MOXXXX/29428-
105	(843700)	1	Tube		MOXXXX/29428-, Obsolete part
106	954379	2	Nipple		MOXXXX/29428-
107	954365	2	Fitting		MOXXXX/29428-
108	954357	2	Fitting nut		MOXXXX/29428-
109		1	emergency stop		MOXXXX/43297-
					See group 3
110	843718	1	Gasket		Early type,engine without hydraulic pump.
111	843704	1	Attaching ring		Early type,engine without hydraulic pump.
112	843703	1	Tensioning ring		Early type,engine without hydraulic pump.
113	959223	2	Hex. socket screw		Early type,engine without hydraulic pump., L=30mm
	959233	1	Hex. socket screw		Early type,engine without hydraulic pump., L=80mm
114	941907	3	Spring washer		Early type,engine without hydraulic pump.