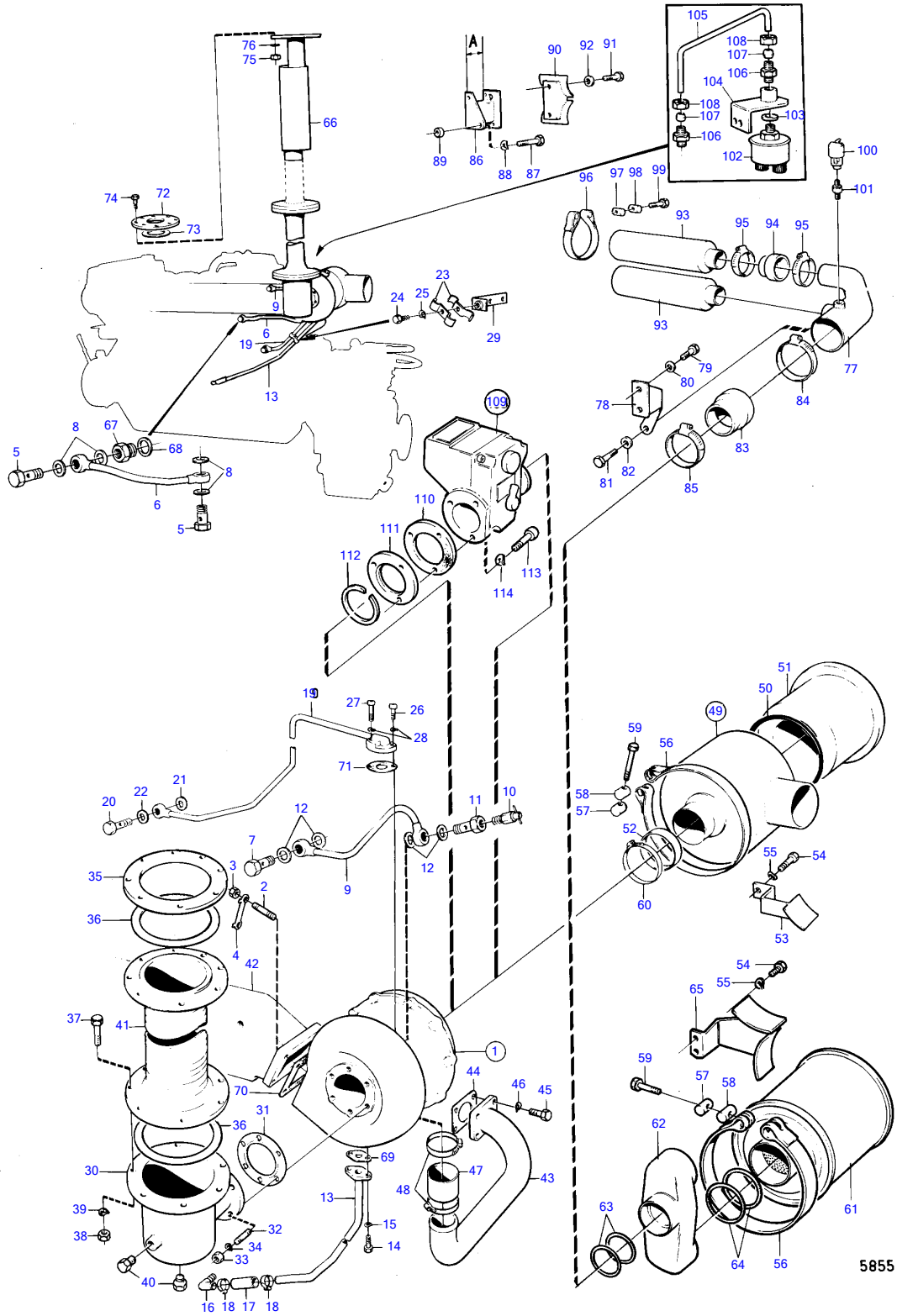


TAMD120A



5855

TAMD120A

| REF | PART NO. | QTY | DESCRIPTION                                                 | SEE SEC. | NOTES                        |
|-----|----------|-----|-------------------------------------------------------------|----------|------------------------------|
| 1   |          | 1   |                                                             |          | Åkerman spec. 867454.        |
|     |          |     | •                                                           | 14497    |                              |
|     | 3802009  | 1   | Turbocharger                                                |          | MO23457/XXXX-                |
|     |          | 1   | Turbocharger, exch                                          |          | MO23457/XXXX-                |
|     |          |     | •                                                           | 14497    |                              |
| 2   | 945851   | 4   | Stud                                                        |          |                              |
| 3   | 943152   | 4   | Nut                                                         |          |                              |
| 4   | 468219   | 2   | Lock washer                                                 |          |                              |
| 5   | 944213   | 2   | Hollow screw                                                |          | (836969)                     |
| 6   | (836851) | 1   | Pipe                                                        |          | MO-23456/XXXX, Obsolete part |
|     | 842428   | 1   | Coolant pipe                                                |          | MO23457/XXXX-                |
| 7   | 944213   | 1   | Hollow screw                                                |          | (836969)                     |
| 8   | 190957   | 4   | Gasket                                                      |          |                              |
| 9   | (836852) | 1   | Pipe                                                        |          | Obsolete part, MO-23456/XXXX |
|     | 842429   | 1   | Coolant pipe                                                |          | MO23457/XXXX-                |
| 10  | 82745    | 1   | Shut-off cock                                               |          |                              |
| 11  | 836981   | 1   | Screw                                                       |          |                              |
| 12  | 190957   | 4   | Gasket                                                      |          |                              |
| 13  | 822572   | 1   | Oil feed pipe                                               |          |                              |
| 14  | 940115   | 2   | Hexagon screw                                               |          |                              |
| 15  | 942336   | 2   | Spring washer                                               |          |                              |
| 16  | 468629   | 1   | Elbow nipple                                                |          |                              |
| 17  | 192358   | X   | Hose                                                        |          | L=80mm                       |
| 18  | 943474   | 2   | Hose clamp                                                  |          |                              |
| 19  | 822571   | 1   | Oil pressure pipe                                           |          |                              |
| 20  | 942589   | 1   | Hollow screw                                                |          |                              |
| 21  | 942703   | 1   | Gasket                                                      |          |                              |
| 22  | 957181   | 1   | Gasket                                                      |          |                              |
| 23  | 820851   | 2   | Clamp                                                       |          |                              |
| 24  | 955512   | 1   | Hexagon screw                                               |          |                              |
| 25  | 941906   | 1   | Spring washer                                               |          |                              |
| 26  | 956584   | 1   | Hex. socket screw                                           |          |                              |
| 27  | 956585   | 1   | Hex. socket screw                                           |          |                              |
| 28  | 942336   | 2   | Spring washer                                               |          |                              |
| 29  | 822625   | 1   | Bracket                                                     |          |                              |
| 30  | (836982) | 1   | Exhaust riser                                               |          | MO-23456/XXXX, Obsolete part |
|     | 842423   | 1   | Exhaust riser                                               |          | MO23457/XXXX-                |
| 31  | 836984   | 1   | Gasket                                                      |          | MO-23456/XXXX                |
|     | 411710   | 1   | Gasket                                                      |          | MO23457/XXXX-                |
| 32  | 953259   | 6   | Stud                                                        |          |                              |
| 33  | 943152   | 6   | Nut                                                         |          |                              |
| 34  | 942336   | 6   | Spring washer                                               |          |                              |
| 35  | 836887   | 1   | Weld flange                                                 |          |                              |
| 36  | 836884   | 2   | Gasket                                                      |          |                              |
| 37  | 955592   | 16  | Hexagon screw                                               |          |                              |
| 38  | 955829   | 16  | Hexagon nut                                                 |          |                              |
| 39  | 941912   | 16  | Spring washer                                               |          |                              |
| 40  | 192154   | 2   | Plug                                                        |          |                              |
| 41  | 836880   | 1   | Exhaust hose                                                |          | L=590mm                      |
| 42  |          |     | induction and exhaust manifold with installation components | 14492    |                              |
| 43  | 837481   | 1   | Intake bend                                                 | 14494    |                              |
| 44  | 836026   | 1   | Gasket                                                      | 14494    |                              |
| 45  | 956570   | 4   | Hex. socket screw                                           | 14494    |                              |
| 46  | 941907   | 4   | Spring washer                                               | 14494    |                              |
| 47  | (944375) | X   | Hose                                                        |          | L=50mm, Obsolete part        |
| 48  | 943482   | 2   | Hose clamp                                                  |          |                              |
| 49  | (823674) | 1   | Air filter                                                  |          | MO-XXXX/29427, Obsolete part |
| 50  | (823672) | 1   | • Gasket                                                    |          | Obsolete part                |
| 51  | (823671) | 1   | • Insert                                                    |          | Obsolete part                |
| 52  | (823673) | 1   | Spacer ring                                                 |          | MO-XXXX/29427, Obsolete part |
| 53  | (836985) | 1   | Cradle                                                      |          | MO-XXXX/29427, Obsolete part |

TAMD120A

| REF | PART NO. | QTY | DESCRIPTION                      | SEE SEC. | NOTES                                                                |
|-----|----------|-----|----------------------------------|----------|----------------------------------------------------------------------|
| 54  | 955588   | 2   | Hexagon screw                    |          |                                                                      |
| 55  | 941912   | 2   | Spring washer                    |          |                                                                      |
| 56  | (823681) | 1   | Tensioning band                  |          | MO-XXXX/29427, Obsolete part                                         |
|     | 821028   | 2   | Tensioning band                  |          | MOXXXX/29428-                                                        |
| 57  | 31404    | 1   | Clevis pin, threaded             |          | MO-XXXX/29427                                                        |
|     | 31404    | 2   | Clevis pin, threaded             |          | MOXXXX/29428-                                                        |
| 58  | 31405    | 1   | Pin                              |          | MO-XXXX/29427                                                        |
|     | 31405    | 2   | Pin                              |          | MOXXXX/29428-                                                        |
| 59  | 31406    | 1   | Hexagon screw                    |          | MO-XXXX/29427                                                        |
|     | 31406    | 2   | Hexagon screw                    |          | MOXXXX/29428-                                                        |
| 60  | 943482   | 1   | Hose clamp                       |          | (951799)                                                             |
| 61  | 842280   | 2   | Air filter                       |          | MOXXXX/29428-                                                        |
| 62  | 842853   | 1   | Connection pipe                  |          | MOXXXX/29428-                                                        |
| 63  | 925078   | 2   | O-ring                           |          | MOXXXX/29428-                                                        |
| 64  | 925082   | 4   | O-ring                           |          | MOXXXX/29428-                                                        |
| 65  | 842850   | 1   | Bracket                          |          | MOXXXX/29428-                                                        |
| 66  | 836257   | 1   | Muffler                          |          | L=1370mm                                                             |
|     | 837224   | 1   | Muffler                          |          | L=1675mm                                                             |
| 67  | 836993   | 1   | Nipple                           |          | See group 2A                                                         |
| 68  | 469328   | 1   | Gasket                           |          | See group 2A                                                         |
| 69  | 417381   | 1   | Gasket                           |          | D70B,classified engine.                                              |
| 70  | 417382   | 1   | Gasket                           |          | D70B,classified engine.                                              |
| 71  | 417378   | 1   | Gasket                           |          | D70B,classified engine.                                              |
| 72  | (842002) | 2   | Weld flange                      |          | D70B spec. 867055, 867060. TD70B spec. 867066., Obsolete part        |
|     | (842003) | 2   | Weld flange                      |          | Engine with oil cooler fitted on front of the engine., Obsolete part |
| 73  | 842012   | 2   | Gasket                           |          | D70B spec. 867055, 867060. TD70B spec. 867066.                       |
|     | (842513) | 2   | Gasket                           |          | Engine with oil cooler fitted on front of the engine., Obsolete part |
| 74  | 955592   | 16  | Hexagon screw                    |          |                                                                      |
| 75  | 955829   | 16  | Hexagon nut                      |          |                                                                      |
| 76  | 941912   | 16  | Spring washer                    |          |                                                                      |
| 77  | (842583) | 1   | Connection pipe                  |          | Spec. 867221., Obsolete part                                         |
| 78  | (842607) | 1   | Bracket                          |          | Spec. 867221., Obsolete part                                         |
| 79  | 955588   | 2   | Hexagon screw                    |          | Spec. 867221.                                                        |
| 80  | 941912   | 2   | Spring washer                    |          | Spec. 867221.                                                        |
| 81  | 940113   | 1   | Hexagon screw                    |          | Spec. 867221.                                                        |
| 82  | 941907   | 1   | Spring washer                    |          | Spec. 867221.                                                        |
| 83  | 837178   | 1   | Rubber cone                      |          | Spec. 867221.                                                        |
| 84  | 961907   | 1   | Hose clamp                       |          | Spec. 867221.                                                        |
| 85  | 943483   | 1   | Hose clamp                       |          | Spec. 867221., (951800)                                              |
| 86  | (842581) | 1   | Bracket                          |          | Spec. 867221., A=162mm, Obsolete part                                |
|     | (842582) | 1   | Bracket                          |          | Spec. 867221., A=75mm, Obsolete part                                 |
| 87  | 955533   | 2   | Hexagon screw                    |          | Spec. 867221., L=114mm                                               |
|     | 180110   | 2   | Elbow nipple                     |          | Spec. 867221., (941672) L=197mm                                      |
| 88  | 941907   | 4   | Spring washer                    |          | Spec. 867221.                                                        |
| 89  | 807183   | 1   | Spacer sleeve                    |          | Spec. 867221., L=6mm                                                 |
|     | 960141   | 2   | Washer                           |          | Spec. 867221., L=2mm                                                 |
| 90  | (823808) | 2   | Bracket                          |          | Spec. 867221., Obsolete part                                         |
| 91  | 940113   | 4   | Hexagon screw                    |          | Spec. 867221.                                                        |
| 92  | 941907   | 4   | Spring washer                    |          | Spec. 867221.                                                        |
| 93  | 823701   | 2   | Air filter                       |          | Spec. 867221.                                                        |
| 94  | 836334   | 2   | Rubber cone                      |          | Spec. 867221.                                                        |
| 95  | 943484   | 4   | Hose clamp                       |          | Spec. 867221., (951801)                                              |
| 96  | 821028   | 4   | Tensioning band                  |          | Spec. 867221.                                                        |
| 97  | 31404    | 4   | Clevis pin, threaded             |          | Spec. 867221.                                                        |
| 98  | 31405    | 4   | Pin                              |          | Spec. 867221.                                                        |
| 99  | 31406    | 4   | Hexagon screw                    |          | Spec. 867221.                                                        |
| 100 | 842037   | 1   | Pressure drop indica             |          | Spec. 867221.                                                        |
| 101 | 191095   | 1   | Nipple                           |          | Spec. 867221.                                                        |
| 102 | 837782   | 1   | Pressure sensor, pressure sender |          | MOXXXX/29428-                                                        |

TAMD120A

| REF | PART NO. | QTY | DESCRIPTION       | SEE SEC. | NOTES                                             |
|-----|----------|-----|-------------------|----------|---------------------------------------------------|
|     |          |     |                   |          | See group 3                                       |
| 103 | 957181   | 1   | Gasket, gasket    |          | MOXXXX/29428-                                     |
|     |          |     |                   |          | See group 3                                       |
| 104 | 843698   | 1   | Bracket           |          | MOXXXX/29428-                                     |
| 105 | (843700) | 1   | Tube              |          | MOXXXX/29428-, Obsolete part                      |
| 106 | 954379   | 2   | Nipple            |          | MOXXXX/29428-                                     |
| 107 | 954365   | 2   | Fitting           |          | MOXXXX/29428-                                     |
| 108 | 954357   | 2   | Fitting nut       |          | MOXXXX/29428-                                     |
| 109 |          | 1   | emergency stop    |          | MOXXXX/43297-                                     |
|     |          |     |                   |          | See group 3                                       |
| 110 | 843718   | 1   | Gasket            |          | Early type,engine without hydraulic pump.         |
| 111 | 843704   | 1   | Attaching ring    |          | Early type,engine without hydraulic pump.         |
| 112 | 843703   | 1   | Tensioning ring   |          | Early type,engine without hydraulic pump.         |
| 113 | 959223   | 2   | Hex. socket screw |          | Early type,engine without hydraulic pump., L=30mm |
|     | 959233   | 1   | Hex. socket screw |          | Early type,engine without hydraulic pump., L=80mm |
| 114 | 941907   | 3   | Spring washer     |          | Early type,engine without hydraulic pump.         |