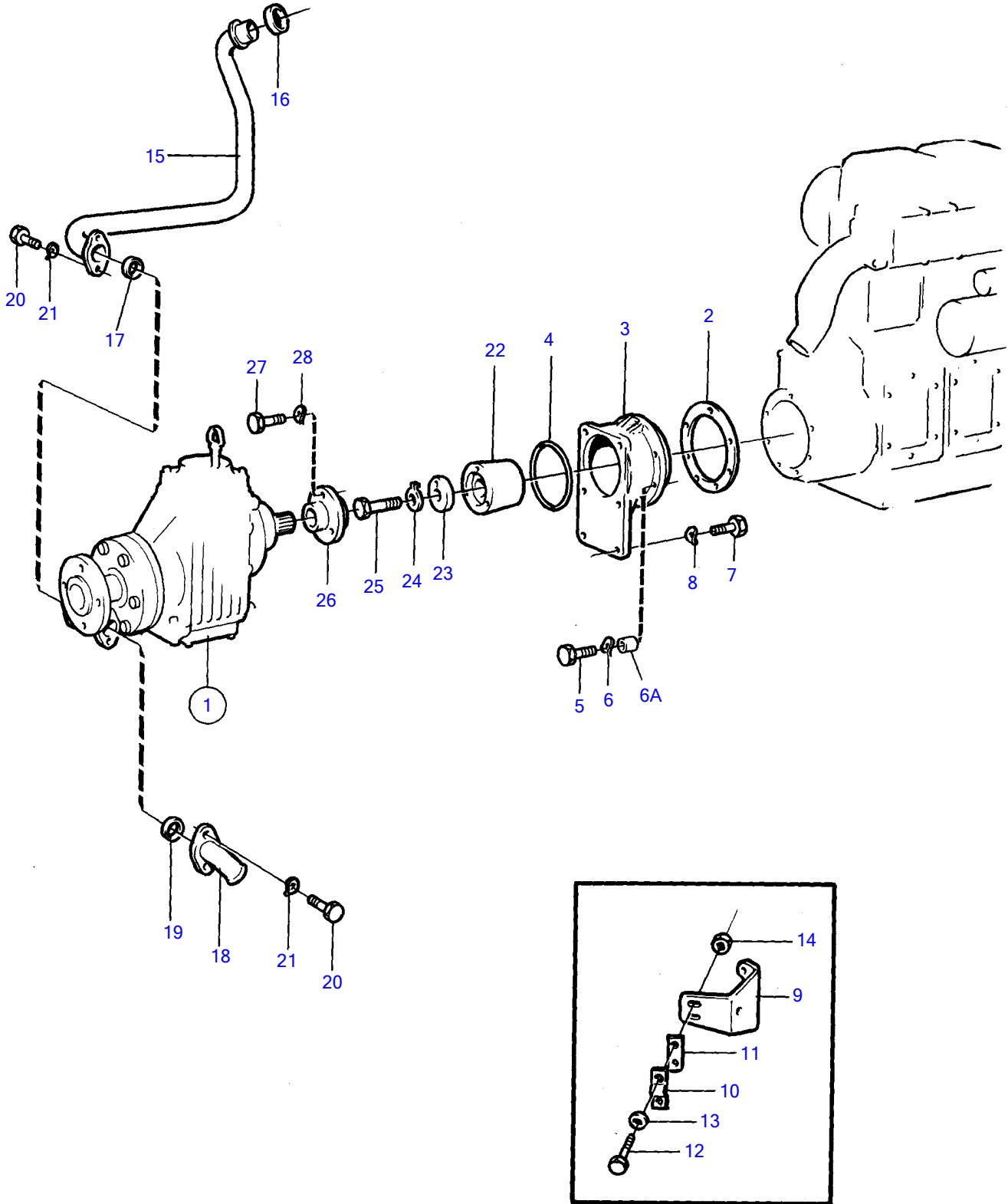


MD11D



MD11D

REF	PART NO.	QTY	DESCRIPTION	NOTES
1	851610	1	Reversing gear • COMPONENTS	RATIO2,37:1, SEE GROUP 4B, OBSOLETE PART SEE GROUP 4B
	851611	1	Reversing gear • COMPONENTS	RATIO3,02:1, SEE GROUP 4B, OBSOLETE PART SEE GROUP 4B
2		1	Gasket	MD11D MO-575667. MD17D MO-19091. MD5C MO-30700. MD7B MO-35427., REPL BY 852632
	852632	1	O-ring	MD11D MO 57568-. MD17D MO 19092-. MD5C MO 30701-. MD17B MO 35428-.
3	852106	1	Intermediate section	OBSOLETE PART
4	925260	1	O-ring	
5	959221	7	Hex. socket screw	MD11D MO-575667. MD17D MO-19091. MD5C MO-30700. MD7B MO-35427., L = 22 MM, OBSOLETE PART
	852630	6	Screw	MD11D MO 57568-. MD17D MO 19092-. MD5C MO 30701-. MD17B MO 35428-., L = 22 MM, OBSOLETE PART
	852631	1	Screw	MD11D MO 57568-. MD17D MO 19092-., L = 50 MM, OBSOLETE PART
6	941907	7	Spring washer	MD11D MO-575667. MD17D MO-19091. MD5C MO-30700. MD7B MO-35427.
	852596	7	Washer	MD11D MO 57568-. MD17D MO 19092-. MD5C MO 30701-. MD17B MO 35428-., OBSOLETE PART
6A	852660	1	Spacer sleeve	MD11D MO 57568-. MD17D MO 19092-., L = 25 MM
7	959239	6	Hex. socket screw	L = 30 MM
8	941908	6	Spring washer	MD11D MO-575667. MD17D MO-19091. MD5C MO-30700. MD7B MO-35427.
	942336	6	Spring washer	MD11D MO 57568-. MD17D MO 19092-. MD5C MO 30701-. MD17B MO 35428-.
9	840400	1	Bracket	OBSOLETE PART
10	21471054	1	Bracket	
11	819068	1	Washer	
12	955246	2	Hexagon screw	
13	940090	2	Washer	
14	946577	2	Lock nut	
15	840507	1	Water pipe	OBSOLETE PART
16	829714	1	Sealing ring	
17	831960	1	Gasket	
18	840509	1	Hose attachment	
19	418445	1	Sealing ring	
20	955270	4	Hexagon screw	
21	941906	4	Spring washer	
22	852420	1	Clutch flange	SEE GROUP 2A, OBSOLETE PART
23	852123	1	Spacer washer	SEE GROUP 2A, OBSOLETE PART
24	833849	1	Lock washer	SEE GROUP 2A, OBSOLETE PART
25	959665	1	Hexagon screw	SEE GROUP 2A, OBSOLETE PART
26	852119	1	Clutch flange	SEE GROUP 2A, OBSOLETE PART
27	955295	3	Hexagon screw	SEE GROUP 2A
28	941907	3	Spring washer	SEE GROUP 2A