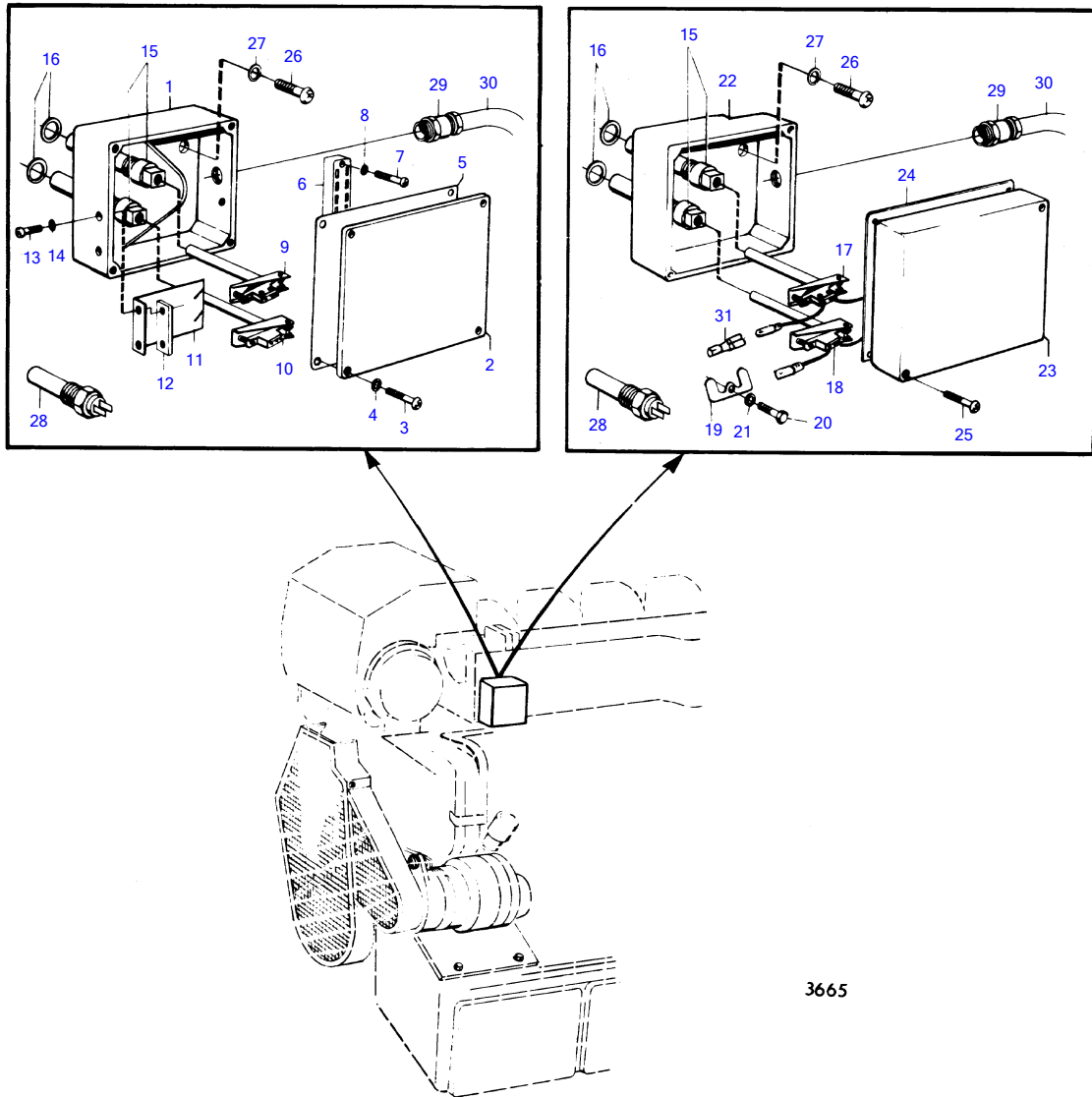


TMD100A, MD100B



3665

TMD100A, MD100B

REF	PART NO.	QTY	DESCRIPTION	SEE SEC.	NOTES
1	(836722)	1	Housing		Obsolete part
2	(836721)	1	Cover		MO-XXXX/7699, Obsolete part
3	950021	4	Cross recessed screw		MO-XXXX/7699
4	(955946)	4	Toothed washer		MO-XXXX/7699, Obsolete part
5	(837179)	1	Gasket		MO-XXXX/7699, Obsolete part
6	(881079)	1	Terminal block		MO-XXXX/7699, Obsolete part
7	(950011)	2	Cross recessed screw		MO-XXXX/7699, Obsolete part
8	955945	2	Toothed washer		MO-XXXX/7699
9	836716	1	Temperature contact		Replaced by 1ea 841765 alternator, 1ea 841812 pulley, 1ea 845021 tension iron, 1ea 949607 lever, 1ea 955780 plate, 1ea 955781 plate and 1ea 941905 resilient lever., MO-XXXX/7699
10	836717	1	Temperature contact		Replaced by 1ea 1578938., MO-XXXX/7699
11	(836719)	1	Clamp		MO-XXXX/7699, Obsolete part
12	(836720)	1	Washer		MO-XXXX/7699, Obsolete part
13	(950020)	2	Cross recessed screw		MO-XXXX/7699, Obsolete part
14	941905	2	Spring washer		MO-XXXX/7699
15	836718	2	Sleeve		
16	957184	2	Gasket		
17	837472	1	Thermo monitor		Replaced by 1ea 841765 alternator, 1ea 841812 pulley, 1ea 845021 tension iron, 1ea 949607 lever, 1ea 955780 plate, 1ea 955781 plate and 1ea 941905 resilient lever., MOXXXX/7700-
18	837473	1	Thermo monitor		Replaced by 1ea 1578938., MOXXXX/7700-
19	(837396)	1	Lock washer		Obsolete part, MOXXXX/7700-
20	956076	1	Cross recessed screw		MOXXXX/7700-
21	941905	1	Spring washer		MOXXXX/7700-
22	837391	1	Housing		MOXXXX/7700-
23	837392	1	Cardboard tube		MOXXXX/7700-
24	837424	1	Gasket		MOXXXX/7700-
25	956301	2	Cross recessed screw		MOXXXX/7700-
26	956568	1	Hex. socket screw		L=19mm
	956567	2	Hex. socket screw		L=16mm
27	(955949)	2	Toothed washer		Obsolete part
28	827150	1	Sensor		See group 2B
29	881192	1	Grommet		
	822327	1	Grommet		Rear mounting.
30			cables		Can't be used on alternator 841765.
31			cable terminal	14035	