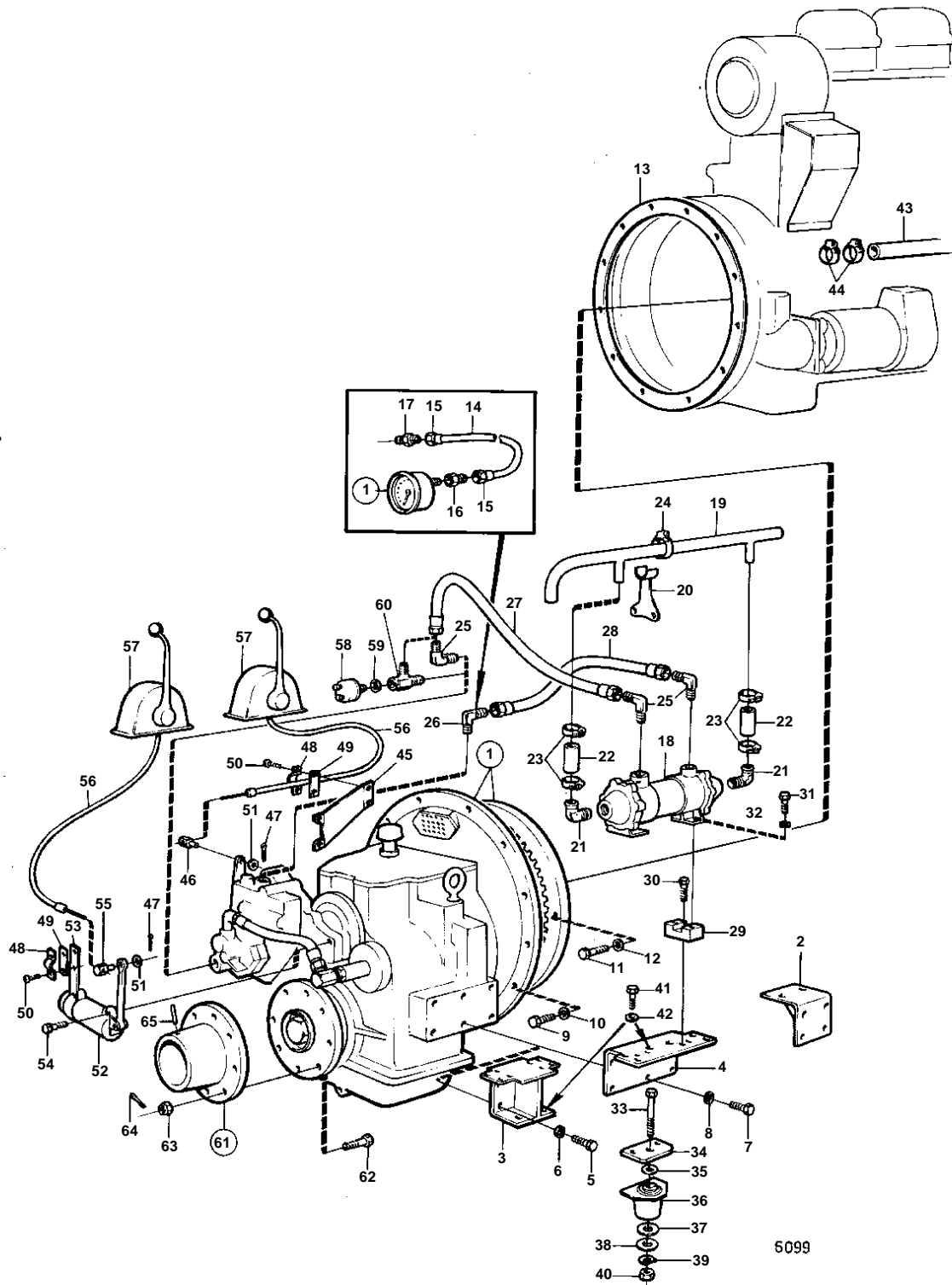


TMD100A,MD100B



TMD100A,MD100B

REF	PART NO.	QTY	DESCRIPTION	SEE SEC.	NOTES
1		1	REV. GEAR, RATIO 1,45:1		
		1	REV. GEAR, RATIO 1,93:1		MG509
		1	REV. GEAR, RATIO 2:1		MG509
		1	REV. GEAR, RATIO 2:91:1		MG509
		1	REV. GEAR, RATIO 3:1		MG509
		1	REV. GEAR, RATIO 2,95:1		MG509 CLASS DNV
		1	REV. GEAR, RATIO 3,39:1		MG509
		1	REV. GEAR, RATIO 4,5:1		MG509
		1	REV. GEAR, RATIO 3,83:1		MG509
			COMPONENTS		
2	837060	1	Bracket		SPEC 867091, 867142.
3	837062	1	Bracket		SPEC 867091, 867142.
4	837098	2	Bracket		REPLACED BY 833860.
5	955561	8	Screw		
6	940280	8	Spring washer		
7	955589	12	Screw		
8	941912	12	Spring washer		
9	940134	12	Screw		
10	941909	12	Spring washer		
11	955561	8	Screw		
12	940280	8	Spring washer		
13	800314	1	Gasket		
14	954303	X	Copper tube		L = 5000 MM
15	954320	2	Nut		
16	836064	1	Nipple		
17	954334	1	Fitting		
18	837083	1	Oil cooler		
				04A-0700	
19	837084	1	Pipe		SPEC 867091, 867142.
	837110	1	Tube		REPLACED BY 833860.
20	837075	2	Bracket		
21	898683	2	Hose attachment		
22	943370	X	Rubber hose		L = 70 MM
23	943478	4	Clamp		
24	943476	2	Hose clamp		
25	837063	3	Elbow union		
26	837064	1	Elbow union		
27	837096	1	Hose		L = 680 MM
28	837120	1	Hose		L = 575 MM. SPEC 867091, 867142.
	837121	1	Hose		L = 520 MM. REPLACED BY 833860.
29	837091	2	Intermediate section		REPLACED BY 833860.
30	955524	4	Screw		REPLACED BY 833860.
31	940135	4	Screw		REPLACED BY 833860.
	940113	4	Screw		SPEC 867091, 867142.
32	941907	4	Spring washer		
33	959827	2	Screw		
34	824374	2	Intermediate plate		
35	836325	2	Washer		
36	836961	2	Rubber element		
37	836963	2	Rubber washer		
38	836962	2	Washer		
39	941912	2	Spring washer		
40	955829	2	Nut		
41	955589	4	Screw		
42	941912	4	Spring washer		
43	952977	X	Radiator hose		L = 140 MM
44	943478	8	Clamp		
45	836117	1	Bracket		
46	813674	1	Cube		
47	907824	2	Cotter pin		
48	819067	2	Brace		
49	819068	2	Washer		
50	950021	4	Screw		

TMD100A,MD100B

REF	PART NO.	QTY	DESCRIPTION	SEE SEC.	NOTES
51	940191	2	Washer		
52	836141	1	Valve		TWIN DISC XA 6575 B
			COMPONENTS		
53	836139	1	Bracket		
54	955538	2	Screw		
55	814082	1	Cube		
56		X	CONTROL CABLE		SEE GROUP 9
57		X	CONTROL		SEE GROUP 9
58	837781	1	Pressure sensor		SEE GROUP 3
59	957181	1	Gasket		SEE GROUP 3
60	842717	1	Nipple		SEE GROUP 3
61	837055	1	Clutch flange		I.D = 30 MM. FOR TRANSPORT.. SPEC 867091, 867142.
	837093	1	Companion flange		I.D = 60 MM. FOR TRANSPORT.. REPLACED BY 833860.. 1" HOLE FOR PROPELLER SHAFT.
62	955750	6	Screw		FOR 837054
	955772	8	Screw		FOR 837092
63	955887	6	Nut		FOR 837054
	955889	8	Castle nut		FOR 837092
64	907861	6	Cotter pin		FOR 837054
	907881	8	Cotter pin		(907877)
					FOR 837092
65	17178	2	Pin		FOR 837054
	907661	2	Pin		FOR 837092