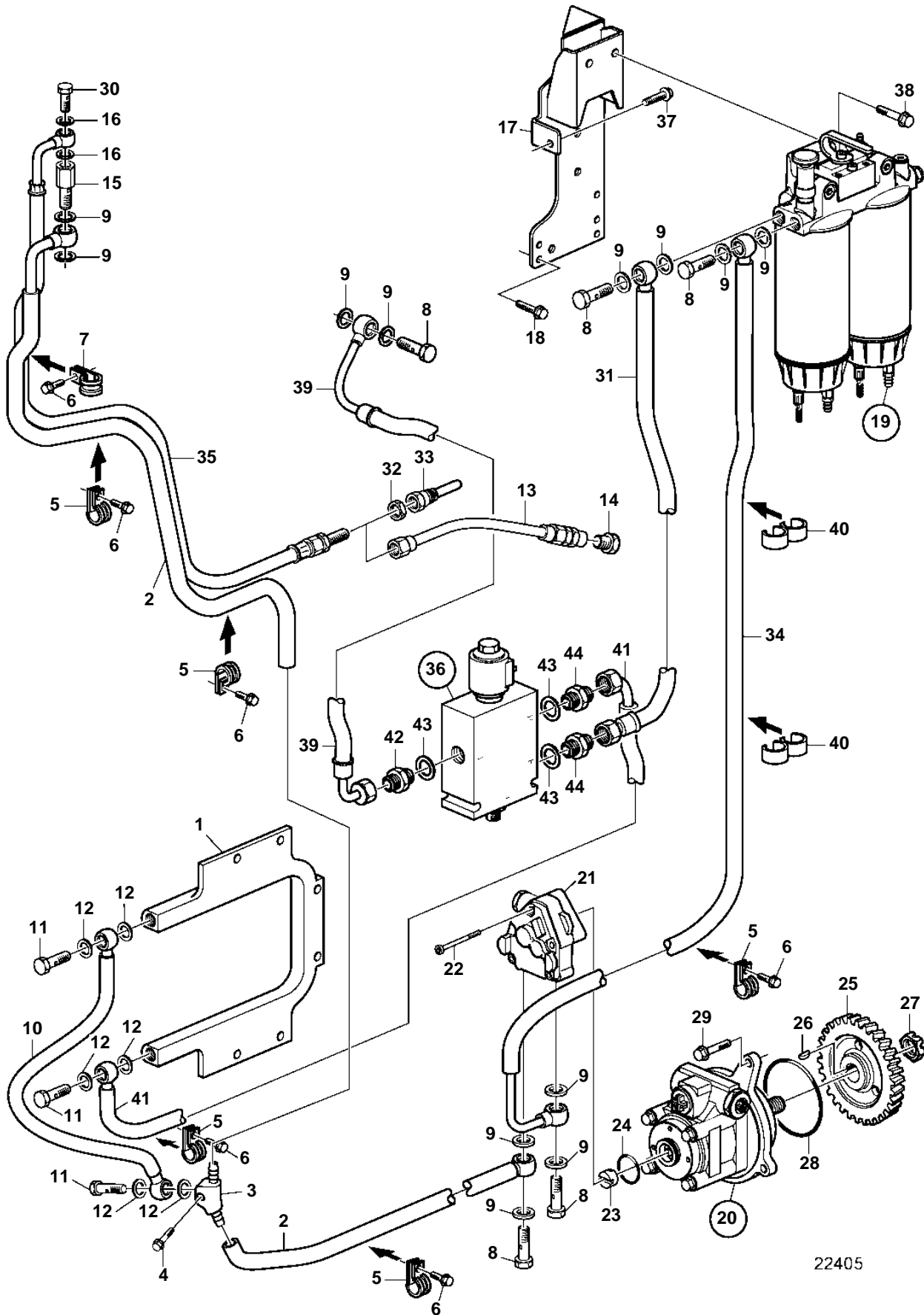


D9A2A MH



22405

D9A2A MH

REF	PART NO.	QTY	DESCRIPTION	SEE SEC.	NOTES
1	20562394	1	Fuel pipe		
2	3836306	1	Fuel hose		
3		1	· Connector		
4	947760	1	Flange screw		
5	949747	8	Clamp		
6	946440	7	Flange screw		
7	978869	1	Clamp		
8	941686	5	Hollow screw		
9	982724	12	Gasket		
10	3836305	1	Fuel hose		
11	25167	3	Hollow screw		
12	982723	6	Gasket		
13	3826595	1	Fuel hose		
14	943582	2	Plug		
15	20450468	1	Overflow valve		
16	982721	2	Gasket		
17	3840366	1	Bracket		
18	965186	2	Flange screw		
19	3817517	2	Fuel filter kit		
				8972	
20	20453450	1	Pump		16L/min. With servo pump.
	20453452	1	Pump		25L/min. With servo pump.
21	3837998	1	Fuel pump		Without servo pump.
	85103778	1	· Fuel pump		
22	85103780	3	Screw		
23	85103779	1	Companion flange		
24	85103703	1	O-ring		
25	8148198	1	Drive		
26	1505357	1	Key		
27	20367040	1	Lock nut		
28	977030	1	O-ring		
29	975199	3	Flange screw		
30	48634	1	Hollow screw		
31	3819938	1	Fuel hose		
32	957018	1	Nut		
33	3829292	1	Nipple		
34	3840119	1	Fuel hose		
35	889796	1	Air vent pipe		
36		1	Shut-off valve		
				8446	
37	965180	1	Flange screw		
38		2	Flange screw	8972	
39	3819078	1	Fuel hose		
40	9205207	2	Retainer		
41	3819074	1	Fuel hose		
42	983388	1	Nipple		
43	947629	3	Gasket		
44		2	Nipple	8446	