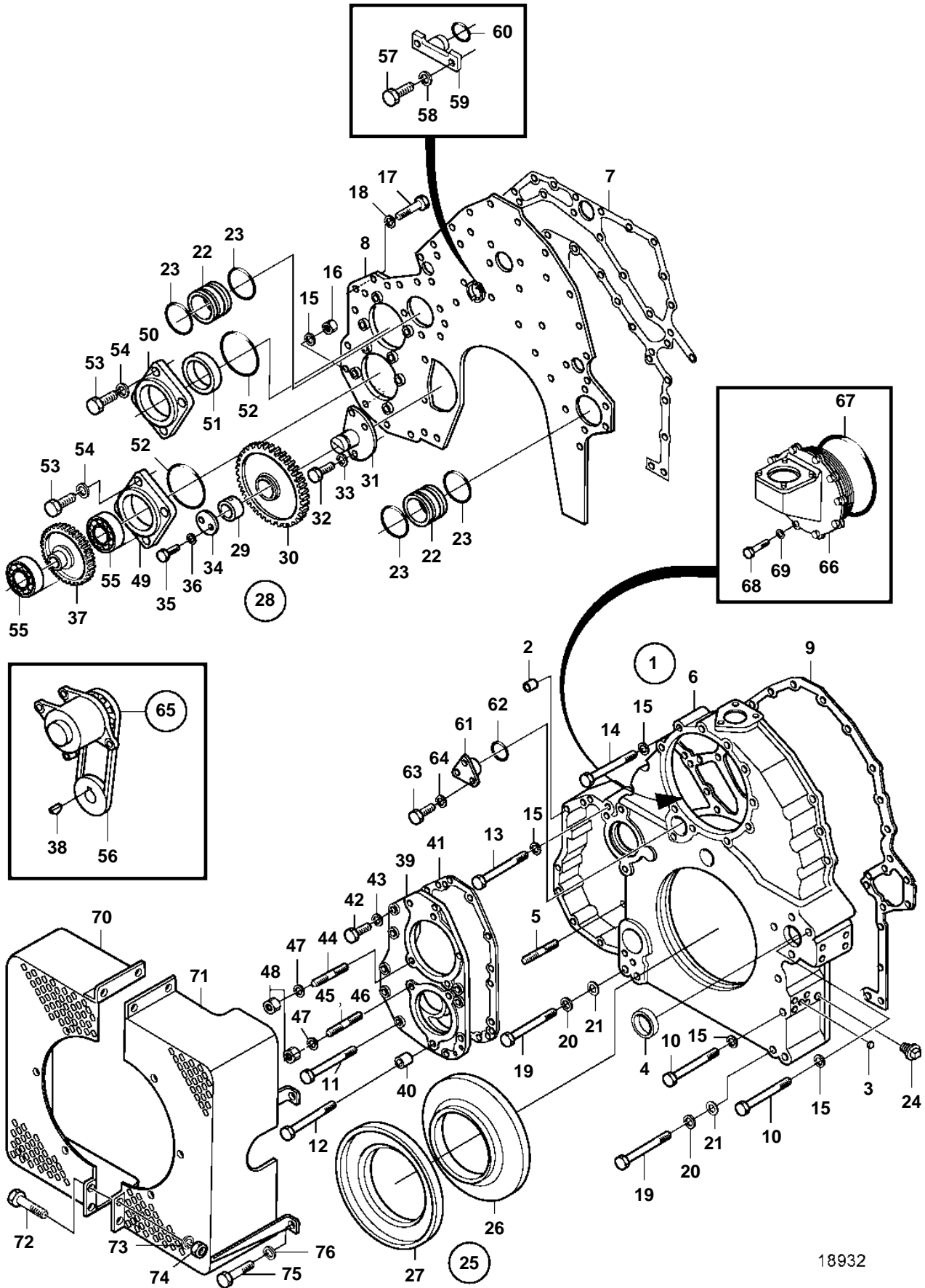


D65A-MS AUX



18932

D65A-MS AUX

REF	PART NO.	QTY	DESCRIPTION	SEE SEC.	NOTES
1	3837137	1	Timing gear casing		
2	3831816	2	· Pin		
3		1	· Cap		
4	3833117	2	· Cap		
5	3834740	2	· Stud		
6		1	· Timing gear casing		
7	3833941	1	Gasket		
8	3835476	1	Front plate		
9	3833942	1	Gasket		
10	3832207	10	Screw		
11	3831553	6	Screw		
12	3832215	1	Screw		
13	3832091	3	Screw		
14	3832090	1	Screw		
15	3832245	21	Spring washer		
16	3832204	4	Nut		
17	3832056	27	Screw		
18	3832245	27	Spring washer		
19	3832219	4	Screw		
20	3832282	4	Spring washer		
21	3831794	4	Washer		
22	3833676	2	Clutch		
23	3831977	4	O-ring		
24	3832320	1	Connector		
25	3834439	1	Ring		
26	3834616	1	Oil deflector ring		
27	3831761	1	Sealing ring		
28	3833583	1	Idler gear		
29	3831693	1	· Bushing		
30		1	· Idler gear		
31	3835477	1	Shaft		
32	3832063	4	Screw		
33	3832245	4	Spring washer		
34	3831631	1	Plate		
35	3832042	2	Screw		
36	3832233	2	Spring washer		
37	3833601	1	Gear		
38	3832286	1	Woodruff key		
39	3834211	1	Plate		
40	3833972	1	Guide sleeve		
41	3833918	1	Gasket		
42	3832063	4	Screw		
43	3832245	4	Spring washer		
44	3834740	2	Stud		
45	3834743	2	Stud		
46	3834741	2	Stud		
47	3832245	6	Spring washer		
48	3832199	6	Lock nut		
49	3833359	1	Bearing cover		
50	3835478	1	Bearing cover		
51	3834462	1	Seal		
52	3831937	2	O-ring		
53	3832056	8	Screw		
54	3832245	8	Spring washer		
55	3831658	2	Bearing		
56	3834297	1	Pulley		
57	3832065	2	Screw		
58	3832245	2	Spring washer		
59	3834279	1	Plug		
60	3831569	1	O-ring		
61	3833488	1	Flange		
62	3831574	1	O-ring		
63	3832058	3	Screw		

D65A-MS AUX

REF	PART NO.	QTY	DESCRIPTION	SEE SEC.	NOTES
64	3832245	3	Spring washer		
65	3832150	1	Alternator		
				5001	
66	3836663	1	Bracket, crankcase vent.		
67	3835675	1	O-ring		
68	3832058	9	Screw		
69	3832245	9	Spring washer		
70	3835706	1	Belt protector		S.B
71	3837197	1	Belt protector		P
72	3832042	4	Screw		
73	3832233	4	Spring washer		
74	3832196	4	Lock nut		
75	3835725	1	Screw		
76	3832233	1	Spring washer		