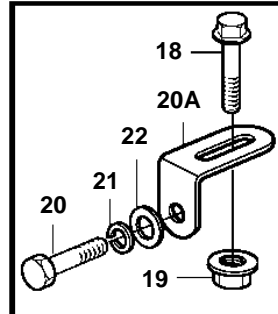
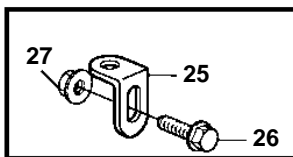
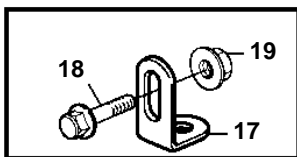
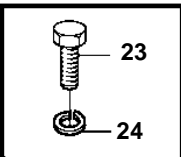
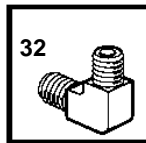
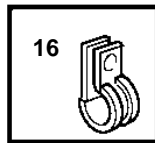
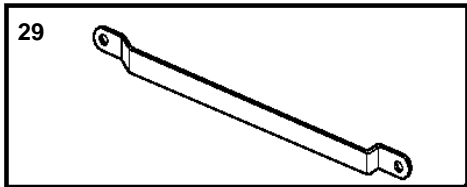
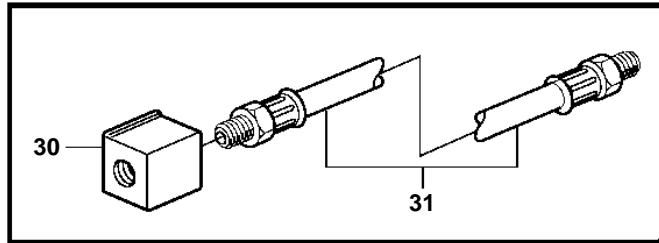
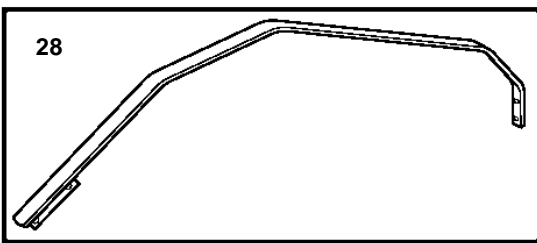
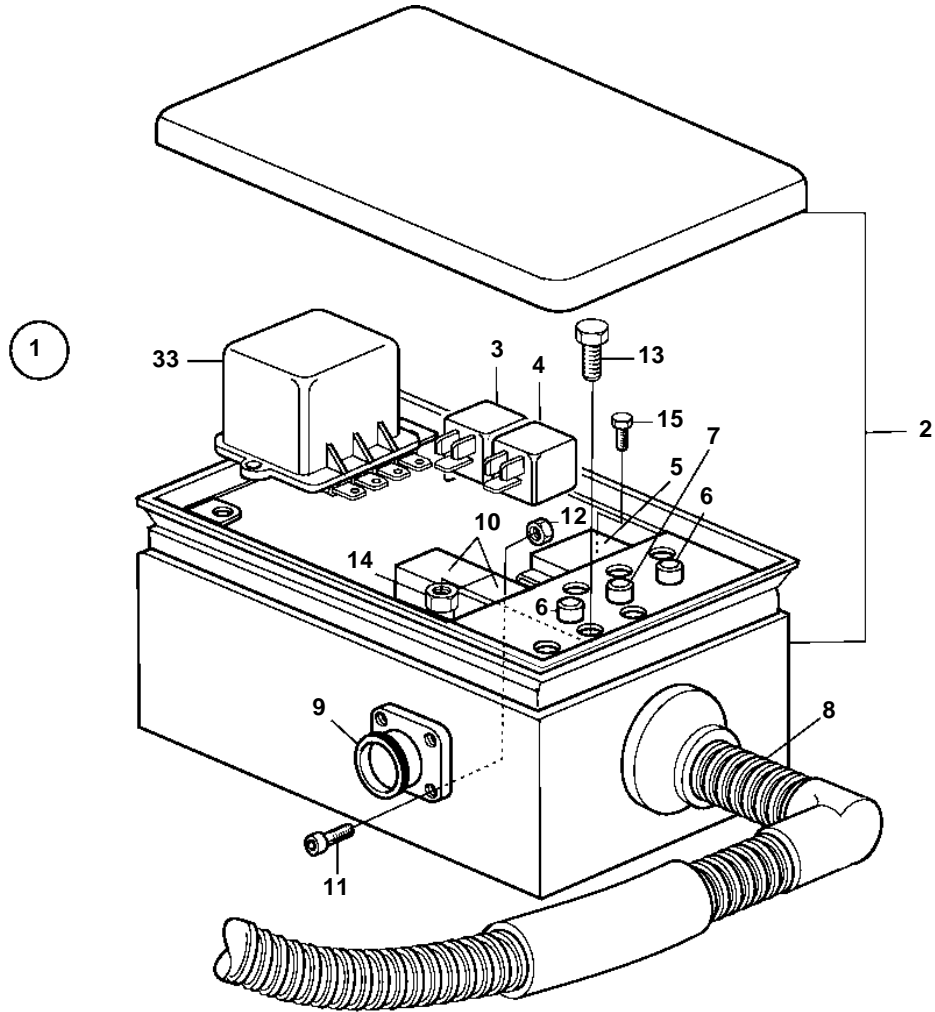


D65A-MT AUX, D65A-MS AUX



18970

D65A-MT AUX, D65A-MS AUX

REF	PART NO.	QTY	DESCRIPTION	NOTES
1		1	Wiring harness	
2	3832498	1	• Box	
3	3171420	1	• Relay	
4	3171420	1	• Relay	
5	874100	1	• Timer relay	
6	846611	1	• Sleeve connector	
7	873952	2	• Fuse	
8	874579	1	• Fuse	
9	977184	2	Tab housing	
10	874306	1	Wiring harness	
11		4		
12	955778	4	Nut	
13	956079	6	Screw	
14	963104	6	Nut	
15	956074	4	Screw	
16	947827	6	Clamp	D=25,4mm
	945081	5	Clamp	D=22,2mm
	949747	1	Clamp	D=15,9mm
17	965553	2	Bracket, fuel inj. pump	L=40mm
	3836040	1	Bracket, adapter	
	3836043	1	Bracket	
18	946440	3	Flange screw	M8
19	945408	3	Flange nut	M8
20	3832042	1	Screw, fuel filter	M10
20A	965553	1	Bracket, fuel inj. pump	
21	3832233	1	Spring washer, fuel filter	
22	3832214	1	Washer, fuel filter	
23	3832073	1	Screw	
24	3832245	1	Spring washer	
25	965557	4	Bracket	Main Cable, insp. Covers
26	946440	5	Flange screw	
27	945408	5	Flange nut	
28	3836039	1	Bracket	Flywheel house, from side to side
29	3836041	1	Bracket	Main Cable, insp. Covers
30	3836042	1	Bracket, turbo pressure sender	
31	3826006	1	Hose, turbo pressure sender	
32	957107	1	Elbow nipple, turbo pressure hose	
33	3836429	1	Starter relay	