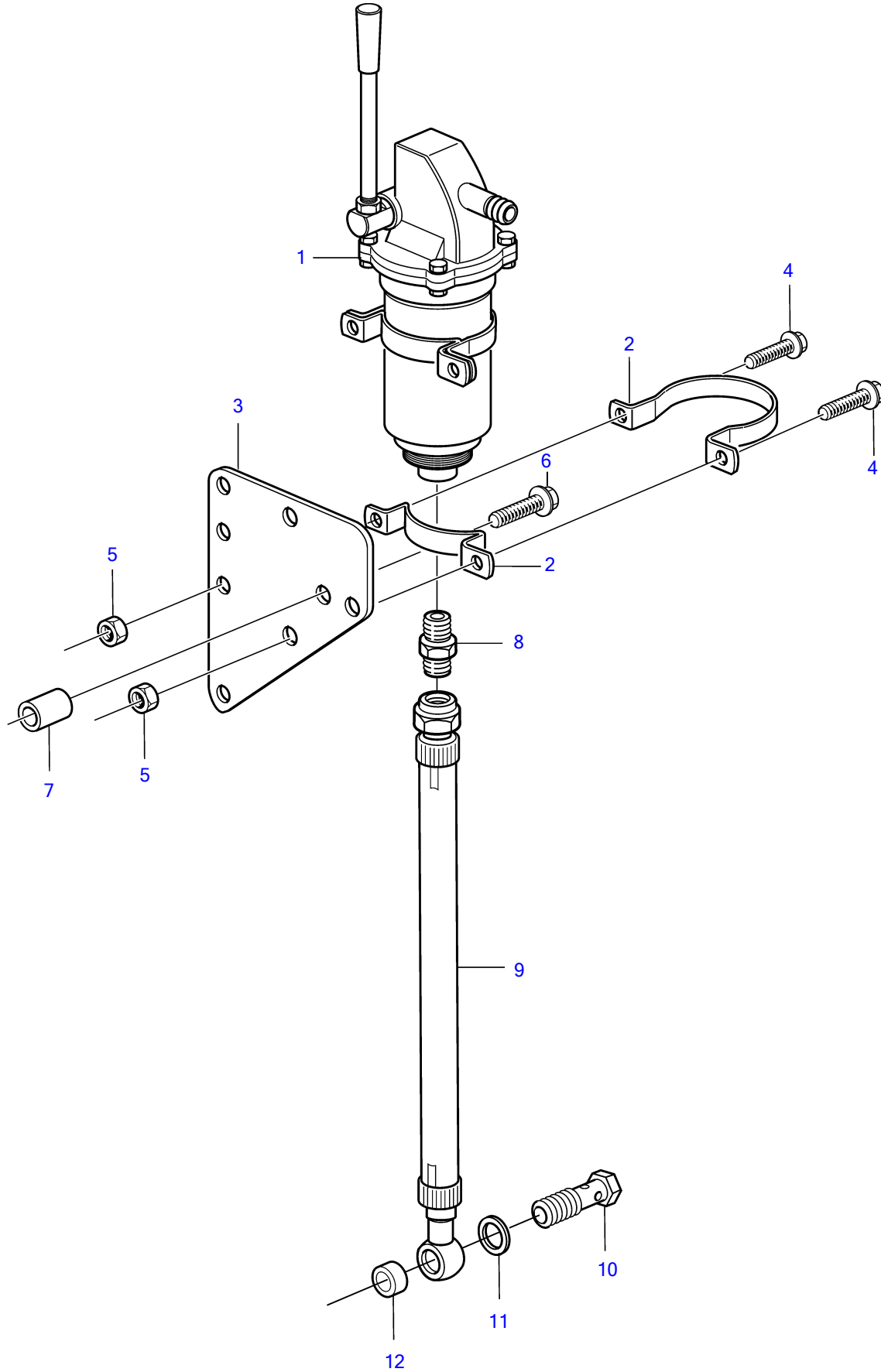


D5A-A T, D7A-A T, D5A-A TA, D7A-A TA, D5A-B TA, D5A-B TA, D5A-B TA, D7A-B TA, D7A-B TA, D7A-B TA



D5A-A T, D7A-A T, D5A-A TA, D7A-A TA, D5A-B TA, D5A-B TA, D5A-B TA, D7A-B TA, D7A-B TA, D7A-B TA

REF	PART NO.	QTY	DESCRIPTION	NOTES
1	3827475	1	Oil drain pump	
2	3838616	1	Clamp	
3	3838605	1	Bracket	
4	945444	2	Flange screw	L=25mm
5	945408	2	Flange nut	
6	20450802	2	Screw	L=60mm
7	888723	2	Spacer sleeve	
8	20551704	1	Nipple	
9	20798507	1	Hose	
10	20801089	1	Hollow screw	
11	11998	1	Gasket	
12	20801234	1	Spacer	