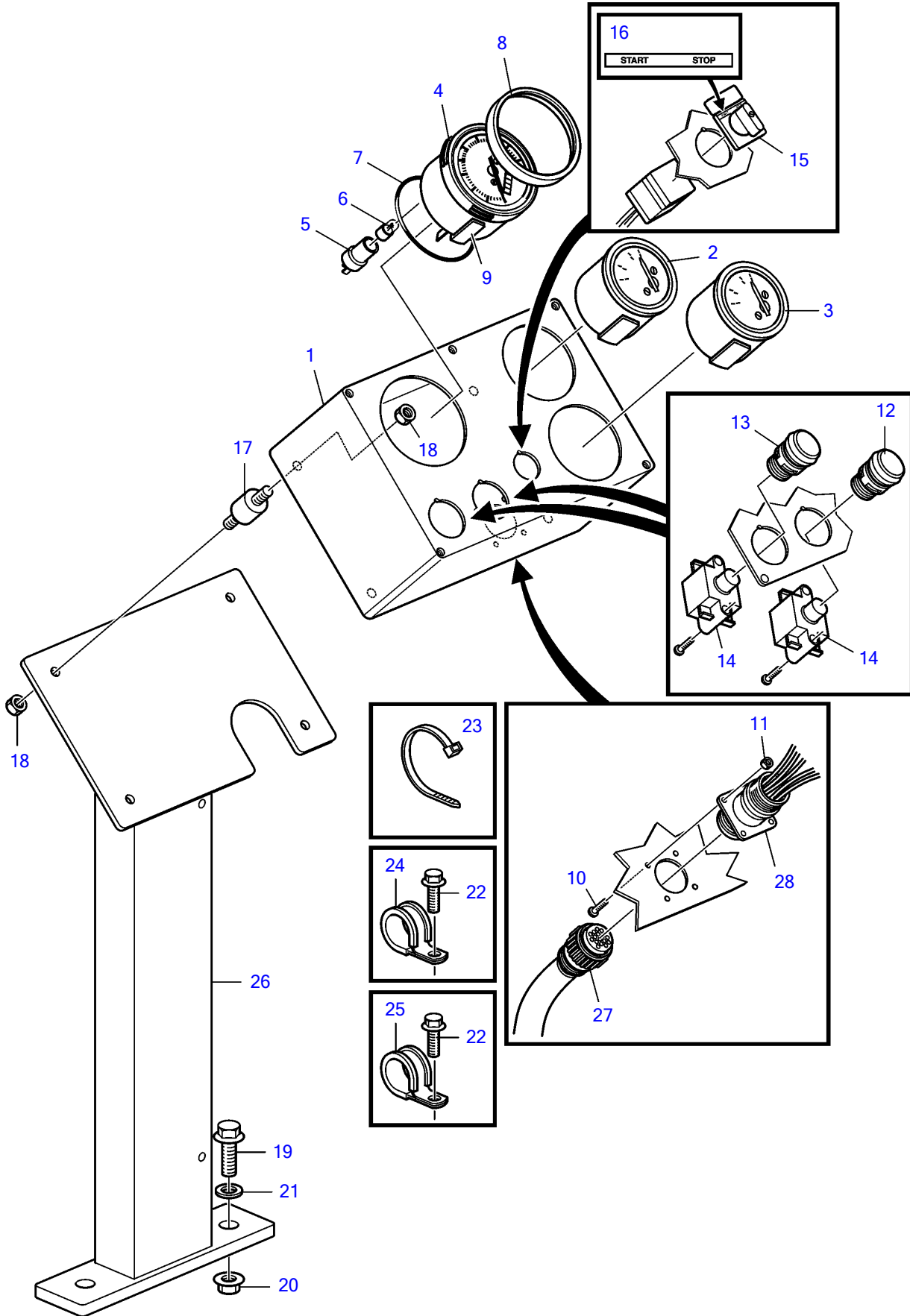


D5A-A T, D7A-A T, D5A-A TA, D7A-A TA, D5A-B TA, D5A-B TA, D7A-B TA, D7A-B TA



D5A-A T, D7A-A T, D5A-A TA, D7A-A TA, D5A-B TA, D5A-B TA, D7A-B TA, D7A-B TA

REF	PART NO.	QTY	DESCRIPTION	NOTES
1	3589136	1	Instrument casing	
2	862076	1	Thermometer	
3	862082	1	Pressure gauge	
4	874496	1	Tachometer kit	
5	863945	1	• Lamp socket	
6	863947	1	• Bulb	
7	873232	1	• O-ring	
8	873683	1	Ring	
9	873208	1	Brace kit	
10	956153	4	Cross recessed screw	
11	966650	4	Lock nut	
12	3817577	1	Push button	
13	3817576	1	Push button	
14	3817574	2	Contact unit	
15	3589093	1	Breaker	
16	3589460	1	Label	
17	1228599	4	Cushion	
18	945407	8	Flange nut	
19	965193	2	Flange screw	
20	971099	2	Flange lock nut	
21	(18675)	2	U-member washer	Obsolete part
22	967949	2	Flange screw	
23	948211	10	Cable tie	
24	952627	1	Clamp	
25	952633	2	Clamp	
26	3589575	1	Bracket	
27	3589089	1	Wiring harness	
28	3807850	1	Wiring harness	