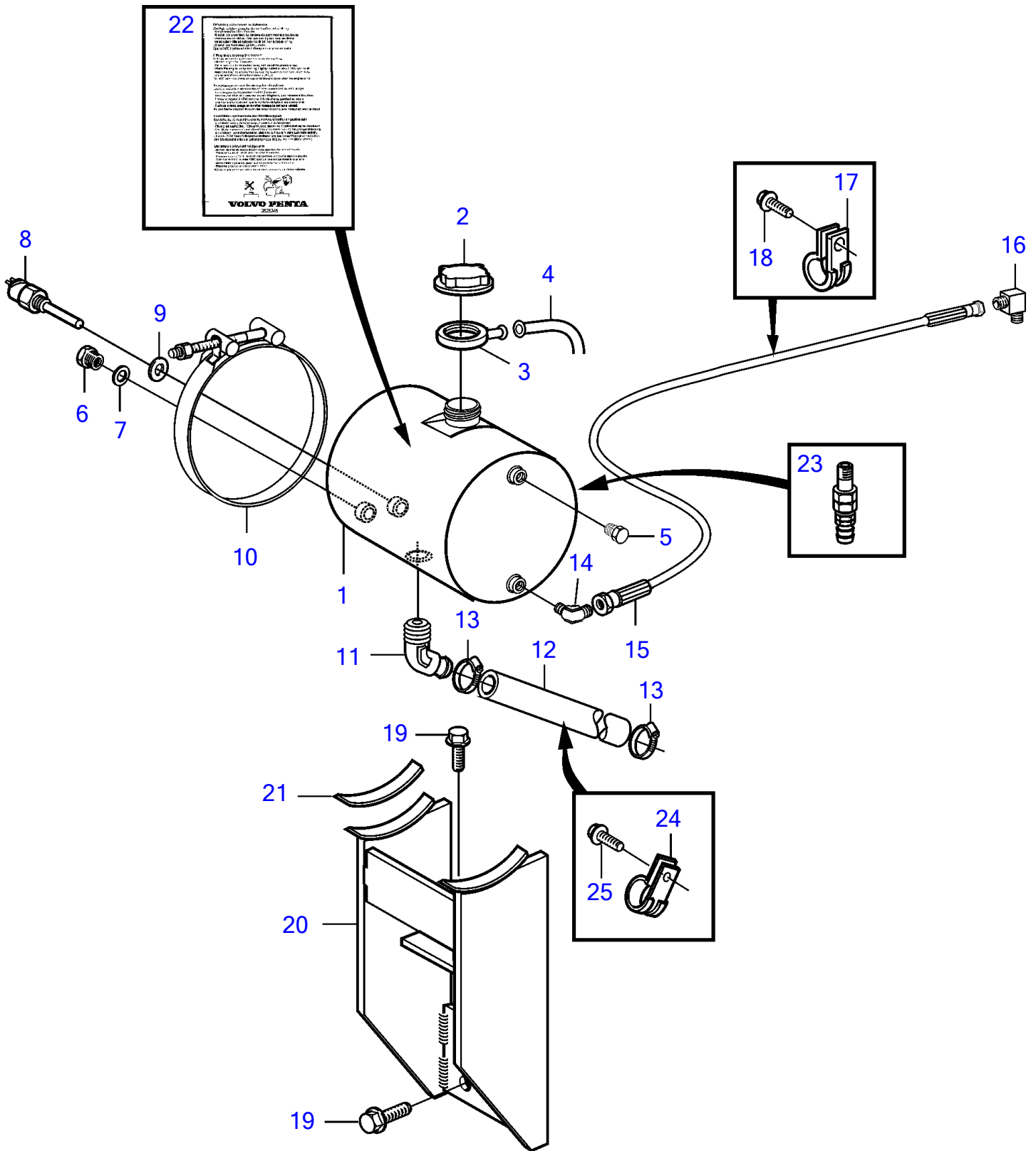


D5A-A T, D5A-A TA, D5A-B TA, D5A-B TA, D5A-B TA



21952

D5A-A T, D5A-A TA, D5A-B TA, D5A-B TA, D5A-B TA

| REF | PART NO. | QTY | DESCRIPTION | SEE SEC. | NOTES |
|-----|----------|-----|------------------|----------|-----------|
| 1 | 3827367 | 1 | Expansion tank | | |
| 2 | 8149353 | 1 | Pressure cap | | 75kPa |
| 3 | 3828863 | 1 | Rubber collar | | |
| 4 | 192618 | X | Hose | | L=1000mm |
| 5 | 479979 | 2 | Plug | | |
| 6 | 979285 | 1 | Reduction nipple | | |
| 7 | 947628 | 1 | Gasket | | |
| 8 | | 1 | Level sensor | 6559 | |
| 9 | 11998 | 1 | Gasket | | |
| 10 | 3839545 | 2 | Tensioner | | |
| 11 | 942590 | 1 | Elbow nipple | | |
| 12 | 952970 | X | Hose | | L=800mm |
| 13 | 943473 | 2 | Hose clamp | | |
| 14 | 942376 | 1 | Elbow nipple | | |
| 15 | 3839383 | 1 | Air vent hose | | L=730mm |
| 16 | 813615 | 1 | Reduction nipple | | |
| 17 | 952626 | 3 | Clamp | | |
| 18 | 945414 | 3 | Flange screw | | (946544) |
| 19 | 946329 | 4 | Flange screw | | L=25mm |
| 20 | 3840211 | 1 | Bracket | | (3837407) |
| 21 | 3839107 | 2 | Rubber mat | | |
| 22 | 3825346 | 1 | Decal | | |
| 23 | 966871 | 1 | Shut-off cock | | |
| 24 | 947827 | 1 | Clamp | | |
| 25 | 946440 | 1 | Flange screw | | |